



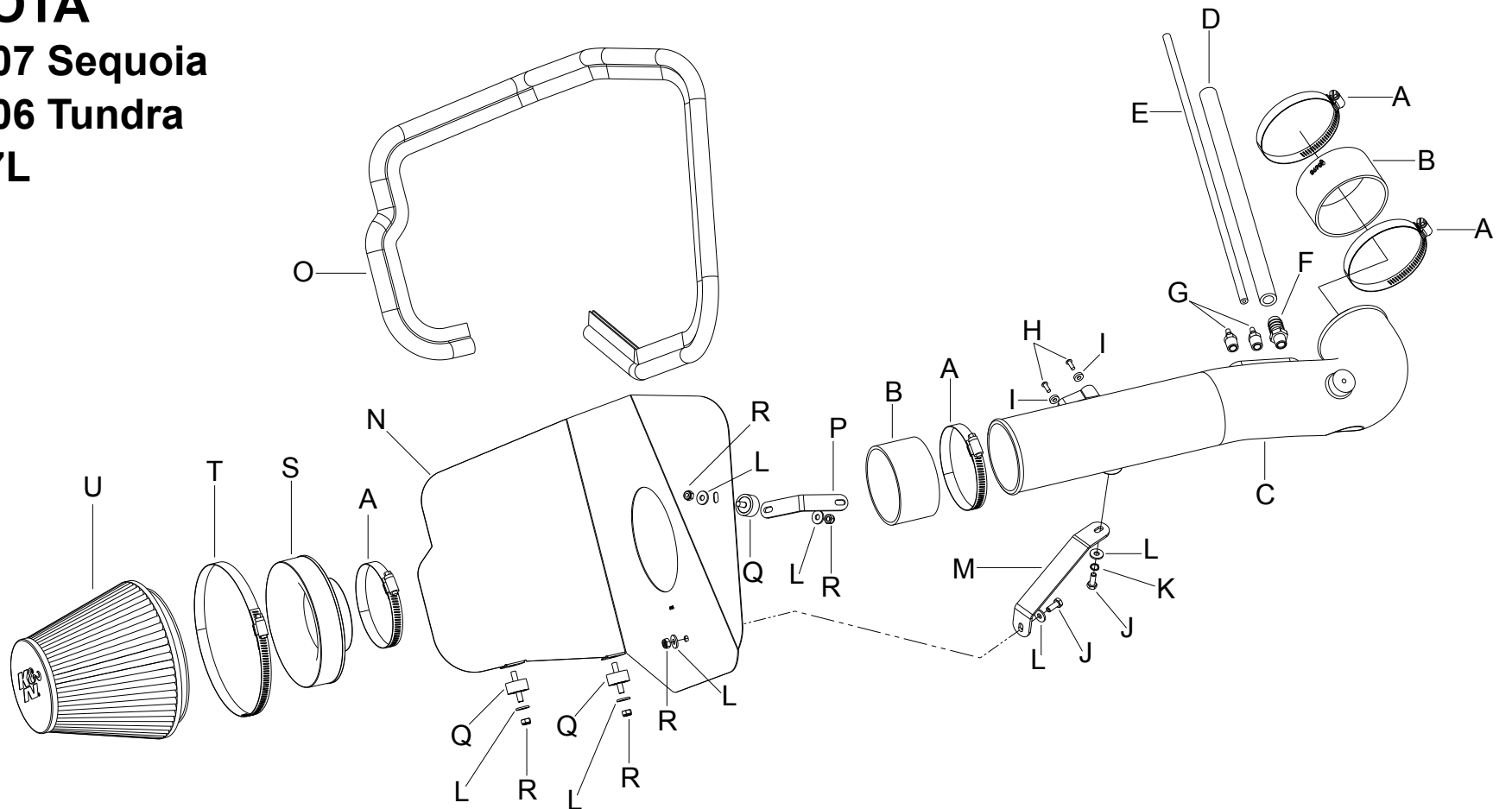
AIRCHARGER®

HIGH-FLOW INTAKE KITS

LEGAL IN CALIFORNIA ONLY FOR RACING VEHICLES WHICH MAY NEVER BE USED, REGISTERED OR LICENSED FOR USE UPON A HIGHWAY. See knifilters.com for CARB status on each part for a specific vehicle

INSTALLATION INSTRUCTIONS

63-9027
TOYOTA
2005-07 Sequoia
2005-06 Tundra
V8-4.7L



PARTS LIST:

Description	Qty.	Part #	Description	Qty.	Part #	Description	Qty.	Part #
A HOSE CLAMP; #56	4	08620	H SCREW; M4-.7 X 12	2	07726	O EDGE TRIM; 61"L	1	102492A
B HOSE; 3.5"ID X 2"L	2	08630	I SPACER; .437"OD X .200"ID	2	06503	P BRACKET; ANGLED	1	070581A
C TUBE; (FC)	1	087172A	J BOLT; M6-1.00 X 16MM	2	07703	Q STUD; M6-1.00 RUBBER	3	07027
D HOSE; 1/2"ID X 14"L	1	08402	K WASHER; 1/4" LOCK	1	08198	R NUT; 6MM NYLOCK	5	07553
E HOSE; 4MM ID X 18"L	1	08153	L WASHER; 1/4"ID X 5/8"OD	7	08275	S ADAPTER; 6" FILTER	1	21512-1
F FITTING; VENT, 1/4"NPT	1	82638	M BRACKET; "C"	1	083113	T HOSE CLAMP; #104	1	08697
G FITTING; 1/4"NPT, 3/16 BARB	2	080021	N HEAT SHIELD	1	07433	U AIR FILTER	1	RU-1042

If you need any assistance please call 1-800-858-3333 to speak with a representative in our Customer Service Center before returning the product.

NOTE: FAILURE TO FOLLOW INSTALLATION INSTRUCTIONS AND NOT USING THE PROVIDED HARDWARE MAY DAMAGE THE INTAKE TUBE, THROTTLE BODY AND ENGINE.

TO START:

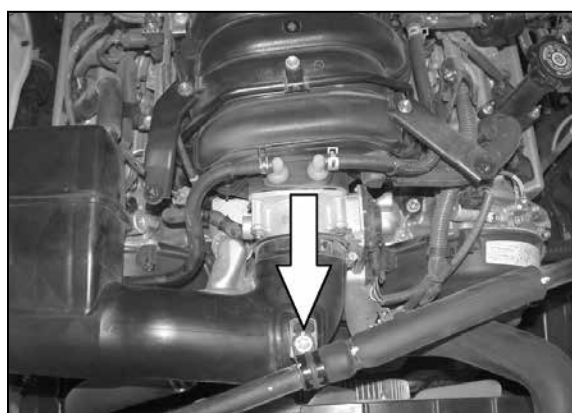
1. Turn off the ignition and disconnect the negative battery cable.
NOTE: Disconnecting the negative battery cable erases pre-programmed electronic memories. Write down all memory settings before disconnecting the negative battery cable. Some radios will require an anti-theft code to be entered after the battery is reconnected. The anti-theft code is typically supplied with your owner's manual. In the event your vehicles anti-theft code cannot be recovered, contact an authorized dealership to obtain your vehicles anti-theft code.



2. Disconnect the mass air sensor electrical connection.



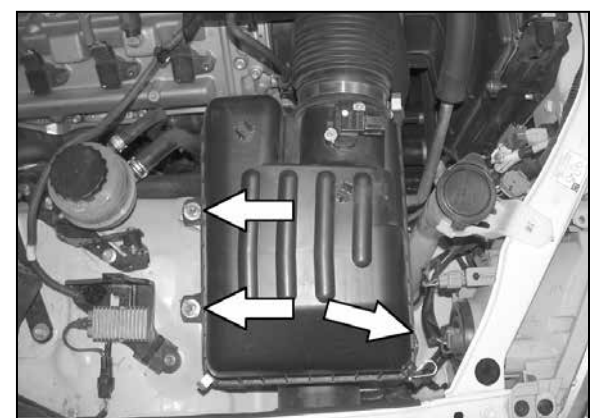
3. Loosen and remove the nuts shown that secure the throttle body cover, then remove the throttle body cover from the engine.



4. Loosen and remove the bolt that secures the A/C hose to the stock intake tube.
NOTE: This bolt will be reused in a later step.



5. Loosen the hose clamp, which secures the stock intake tube to the throttle body



6. Loosen the three bolts that secure the stock airbox assembly to the inner fender.

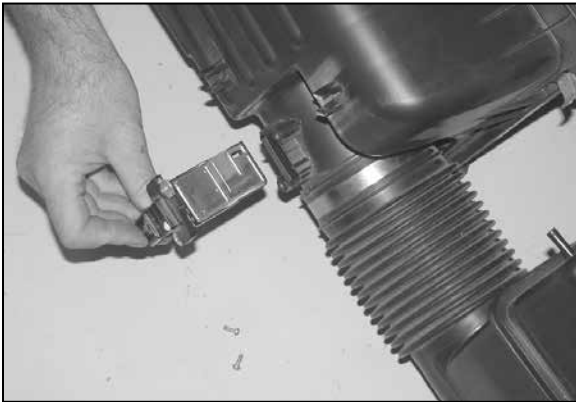


7. Disconnect the three vacuum lines shown from the stock intake tube.



8. Remove the complete intake assembly from the vehicle as shown.

NOTE: K&N Engineering, Inc., recommends that customers do not discard factory air intake.



9. Remove the two screws which secures the mass air sensor to the factory airbox, then remove the mass air sensor from the airbox as shown.



10. Install the mass air sensor into the K&N® intake tube and secure with the provided spacers and hardware as shown.



11. Install the provided edge trim onto the heat shield as shown.
NOTE: Some trimming of the edge trim may be necessary.



12. Install the rubber mounted studs onto the heat shield as shown using the provided hardware.



13. Install the provided bracket (070581) onto the rubber mounted stud installed in step #12. Do not tighten completely at this time.



14. Install the two rubber mounted stud to the original airbox mounting holes as shown.



15. Remove the radiator fan shroud upper mounting bolt shown.

NOTE: This bolt will be reused.



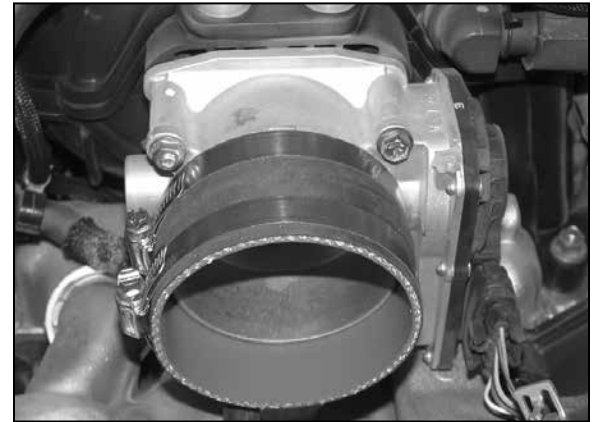
16. Install the heat shield assembly onto the rubber mounted studs install in step #14 and secure with the provided hardware.



17. Secure the heat shield bracket to the radiator fan shroud with the bolt removed in step #15.



17a. Install the tube mounting bracket (083113) onto the heat shield a shown using the provided hardware.



18. Install the silicone hose (08630) onto the throttle body and secure with the provided hose clamp as shown.



19. Install the provided npt fittings into the intake tube as shown.

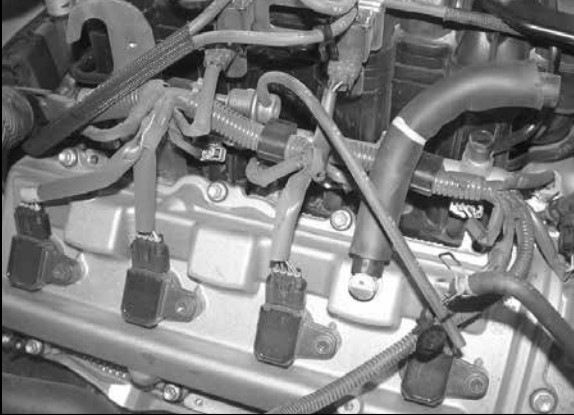
NOTE: NPT fitting has tapered threads and only designed to be installed until hand tight, then tighten one rotation or when the fitting becomes difficult to return.



20. Install the intake tube onto the throttle body and align with the tube mounting bracket, Then secure with the provided hardware.



21. Attach the A/C hose to the intake tube with the bolt removed in step #4.



22. Remove the factory crankcase vent hose and fuel pressure regulator vent hose shown from the engine.



23. Install the provided crankcase vent hose onto the valve cover and then attach to the intake tube as shown.



24. Install the provided fuel pressure regulator vent hose onto the fuel pressure regulator and then attach to the intake tube as shown.



25. Attach the power steering pressure switch vent hose to the intake tube as shown.



26. Install the filter adapter into the air filter as shown and secure with the provided hose clamp.
NOTE: Drycharger® air filter wrap; part number RF-1042DK is available to purchase separately. To learn more about Drycharger® filter wraps or look up color availability please visit <http://www.knfilters.com>®.



27. Install the silicone hose (08630) onto the filter adapter as shown and secure with the provided hose clamp.



28. Install the air filter assembly onto the intake tube and secure with the provided hose clamp.



29. Reinstall the engine cover and secure with the nuts removed in step #3.



30. Reconnect the mass air sensor electrical connection as shown.



31. Using the provided wire tie, safely secure the excess mass air sensor wiring.



32. Reconnect the vehicle's negative battery cable. Double check to make sure everything is tight and properly positioned before starting the vehicle.

33. It will be necessary for all K&N® high flow intake systems to be checked periodically for realignment, clearance and tightening of all connections. Failure to follow the above instructions or proper maintenance may void warranty.

ROAD TESTING:

1. Start the engine with the transmission in neutral or park. Listen for air leaks or odd noises. For air leaks secure hoses and connections. For odd noises, find cause and repair before proceeding. This kit will function identically to the factory system except for being louder and much more responsive.

2. Test drive the vehicle. Listen for odd noises or rattles and fix as necessary.

3. If road test is fine, you can now enjoy the added power and performance from your kit.

4. K&N Engineering, Inc., requires cleaning the intake system's air filter element periodically for excessive dirt build-up. When used in harsh terrain conditions or off-road environments, our filters will require cleaning more often. We recommend that you visually inspect your filter more frequently when used in harsh terrain conditions to determine if the screen is still visible. When the screen is no longer visible some place on the filter element, it is time to clean it. To clean and re-oil, purchase our filter Recharger® service kit, part number 99-5050 or 99-5000 and follow the easy instructions.

LEGAL IN CALIFORNIA ONLY FOR RACING VEHICLES WHICH MAY NEVER BE USED, REGISTERED OR LICENSED FOR USE UPON A HIGHWAY.

See knfilters.com for CARB status on each part for a specific vehicle