



LEGAL IN CALIFORNIA ONLY FOR RACING VEHICLES WHICH MAY NEVER BE USED, REGISTERED OR LICENSED FOR USE UPON A HIGHWAY. See knfilters.com for CARB status on each part for a specific vehicle

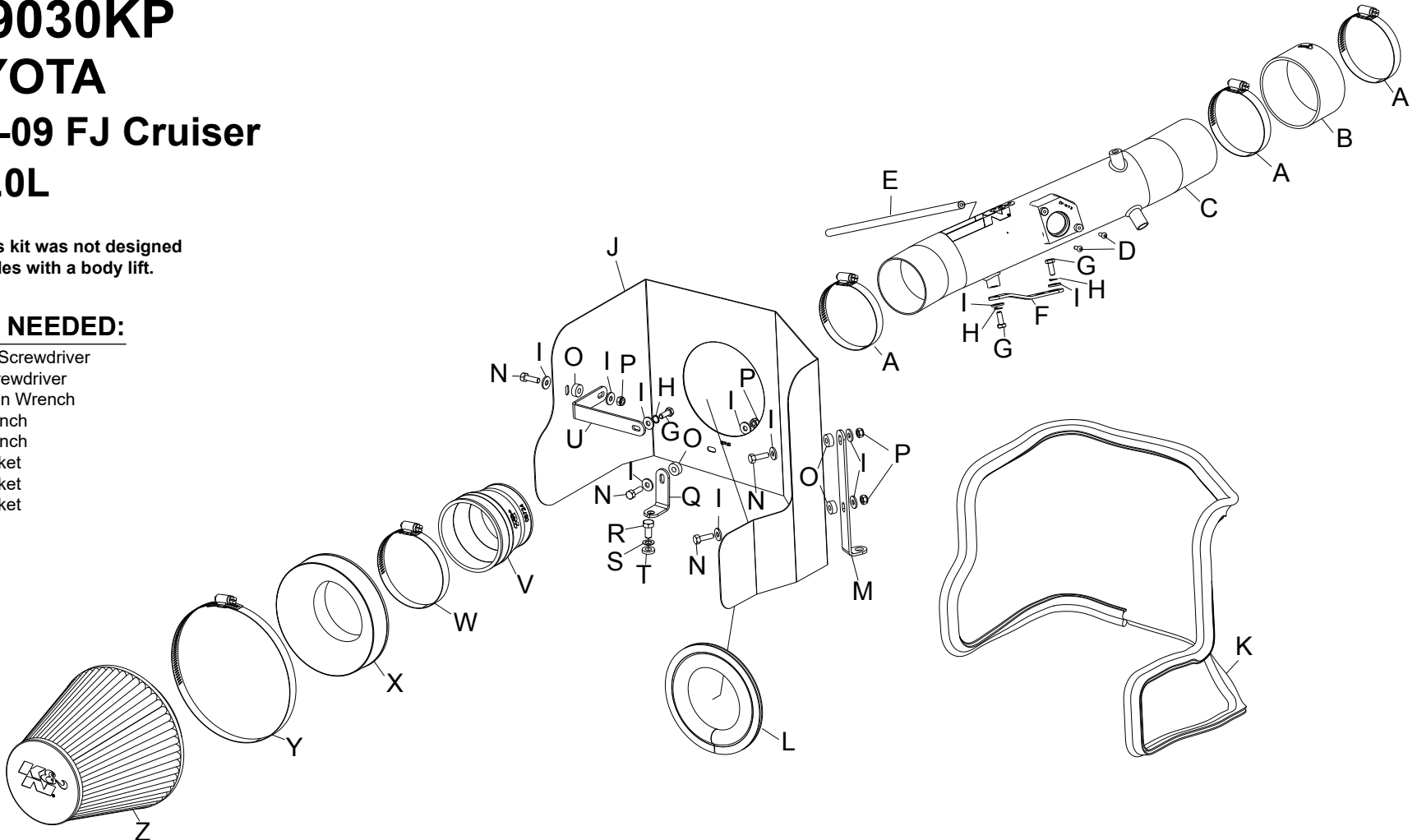
INSTALLATION INSTRUCTIONS

77-9030KP
TOYOTA
2007-09 FJ Cruiser
V6-4.0L

NOTE: This kit was not designed to fit vehicles with a body lift.

TOOLS NEEDED:

- Flat Blade Screwdriver
- Phillips Screwdriver
- 2.5mm Allen Wrench
- 10mm Wrench
- 13mm Wrench
- 10mm Socket
- 12mm Socket
- 13mm Socket
- Ratchet
- Extension
- Pliers



PARTS LIST:

Description	Qty.	Part #	Description	Qty.	Part #	Description	Qty.	Part #
A HOSE CLAMP #48	3	08601	J HEAT SHIELD	1	07638	S WASHER; 8MM SPRING	1	08239
B HOSE; 3"ID X 2"L	1	08434	K EDGE TRIM; 83"L	1	102503	T WASHER; 5/16"ID X 5/8"OD	1	08276
C INTAKE TUBE; (BRIGHT)	1	27187AKP	L EDGE TRIM; 17"L	1	102469	U BRACKET; "L" LG.	1	26637
D SCREW; M4- .7 X 12	2	07726	M BRACKET; "L" LG.	1	07159A	V HOSE; 3.5"ID TO 3"ID X 3"L	1	08724
E HOSE; 4MM ID X 18"L	1	08153	N BOLT; M6 X 1 X 20MM	4	07795	W HOSE CLAMP #56	1	08620
F BRACKET; "Z"	1	26545	O SPACER: .625" OD X .250"L	4	06555	X ADAPTER; 6" FILTER	1	21512-1
G BOLT; M6-1 X 16MM	3	07812	P NUT; 6MM NYLOCK	4	07553	Y HOSE CLAMP #104	1	08697
H WASHER; 1/4" LOCK	3	08198	Q BRACKET; "L"	1	070812A	Z AIR FILTER	1	RU-1048
I WASHER; 1/4"ID X 5/8"OD	11	08275	R BOLT; 8MM-1.25 X 16MM	1	07844			

NOTE: FAILURE TO FOLLOW INSTALLATION INSTRUCTIONS AND NOT USING THE PROVIDED HARDWARE MAY DAMAGE THE INTAKE TUBE, THROTTLE BODY AND ENGINE.

TO START:

1. Turn off the ignition and disconnect the negative battery cable.
NOTE: Disconnecting the negative battery cable erases pre-programmed electronic memories. Write down all memory settings before disconnecting the negative battery cable. Some radios will require an anti-theft code to be entered after the battery is reconnected. The anti-theft code is typically supplied with your owner's manual. In the event your vehicles' anti-theft code cannot be recovered, contact an authorized dealership to obtain your vehicles anti-theft code.



2. Loosen the two nuts that secure the engine cover.



3. Lift up and remove the engine cover.



4. Disconnect the mass air sensor electrical connection.



5. Slide the spring clamp back and then disconnect the crank case ventilation hose from the fitting on the factory air box.



6. Remove the two intake resonator mounting bolts shown.



7. Loosen the hose clamp which secures the intake tube to the stock air filter housing and then remove the intake tube and resonator assembly.



8. Remove the two air box mounting bolts shown and loosen the hose clamp at the throttle body.



9. Lift up and remove the air box assembly from the engine.

NOTE: Be sure to unhook the mass air sensor wiring harness retaining clips and fuel pressure regulator vent hose from the air box.



10. Install the long edge trim around the perimeter of the heat shield as shown.

NOTE: Some trimming of the edge trim may be necessary



11. Install the short edge trim to the inside of the intake tube pass through hole as shown.

NOTE: some trimming of the edge trim may be necessary.



12. Install the mounting bracket (07159) onto the heat shield using the provided spacers as shown.



13. Remove the power steering reservoir mounting bolt shown.

NOTE: This bolt will be reused.



14. Install the heat shield into the vehicle and secure to the power steering reservoir with the bolt removed in step #13.



15. Secure the heat shield to the inner fender with the large "L" bracket as shown.

NOTE: Be sure to use the supplied spacer between the bracket and heat shield.



16. Secure the bottom of the heat shield to the inner fender with the small "L" bracket.

NOTE: Be sure to use the provided spacer between the bracket and heat shield.



17. Remove the two screws that secure the mass air sensor to the air box and then remove the mass air sensor from the air box.



18. Install the mass air sensor into the K&N® intake tube using the provided hardware.



19. Remove the engine cover mounting stud from the factory air box.



20. Install the engine cover mounting stud into the K&N® intake tube as shown.



21. Install the tube mounting bracket (26545) onto the K&N® intake tube as shown.

NOTE: Do not completely tighten at this time.



22. Install the supplied silicone hose (08434) onto the throttle body and secure with the provided hose clamp.



23. Install the intake tube into the silicone hose at the throttle body and align the mounting bracket with the threaded boss on the valve cover, then secure with the provided hardware and hose clamp.



24. Install the provided filter adapter into the K&N® filter as shown and secure with the provided hose clamp.



25. Install the provided silicone hose (08724) onto the K&N® filter assembly and secure with the provided hose clamp.

NOTE: Drycharger® air filter wrap; part # RF-1048DK is available to purchase separately. To learn more about Drycharger® filter wraps or look up color availability please visit <http://www.knfilters.com>.



26. Install the K&N® filter assembly onto the K&N® intake tube and secure with the provided hose clamp.



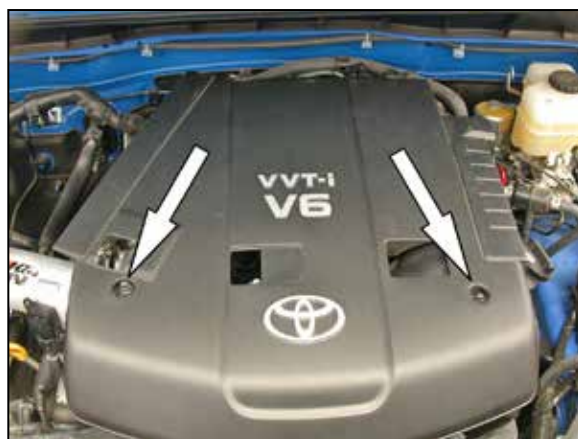
27. Connect the crank case vent hose to the K&N® intake tube and secure with the stock hose clamp.



28. Install the provided vent hose onto the fuel pressure regulator and then onto the K&N® intake tube as shown.



29. Reconnect the mass air sensor electrical connection.



30. Reinstall the engine cover and secure with the factory mounting nuts.



31. Reconnect the vehicle's negative battery cable. Double check to make sure everything is tight and properly positioned before starting the vehicle.

32. It will be necessary for all K&N® high flow intake systems to be checked periodically for realignment, clearance and tightening of all connections. Failure to follow the above instructions or proper maintenance may void warranty.

ROAD TESTING:

1. Start the engine with the transmission in neutral or park, and the parking brake engaged. Listen for air leaks or odd noises. For air leaks secure hoses and connections. For odd noises, find cause and repair before proceeding. This kit will function identically to the factory system except for being louder and much more responsive.

2. Test drive the vehicle. Listen for odd noises or rattles and fix as necessary.

3. If road test is fine, you can now enjoy the added power and performance from your kit.

4. K&N Engineering, Inc., requires cleaning the intake system's air filter element every 100,000 miles. When used in dusty or off-road environments, our filters will require cleaning more often. We recommend that you visually inspect your filter once every 25,000 miles to determine if the screen is still visible. When the screen is no longer visible some place on the filter element, it is time to clean it. To clean and re-oil, purchase our filter Recharger® service kit, part number 99-5050 or 99-5000 and follow the easy instructions.

LEGAL IN CALIFORNIA ONLY FOR RACING VEHICLES WHICH MAY NEVER BE USED, REGISTERED OR LICENSED FOR USE UPON A HIGHWAY.

See knfilters.com for CARB status on each part for a specific vehicle