



# INSTALLATION INSTRUCTIONS

## Mustang Battery Relocation Kit - Part No. 30301

(2005 – 2010 Mustang GT / 2011 Mustang 5.0)

Thank you for your purchase from Lakewood Industries. For technical assistance, please call 216-688-8300 Monday thru Friday 8:30 AM to 5:00 PM EST.

**WARNING: DUE TO THE TECHNICAL NATURE OF THIS PRODUCT, AND SPECIALIZED EQUIPMENT, PROFESSIONAL INSTALLATION IS RECOMMENDED.**

### STEP 1

Remove negative battery cable followed by positive battery cable from battery.

### STEP 2

Remove battery and O.E. battery box from vehicle.

### STEP 3

Lift and support right side front (passenger side) of vehicle with jack stands. Remove right front wheel and plastic inner fender well from vehicle. You will now have access to location on right side of firewall where O.E harness is routed into passenger compartment.

### STEP 4

Inside passenger compartment remove from right side (passenger side) of vehicle the foot-well kick panel, rocker panel sill plate, B-pillar interior panel as well as rear seat. In trunk location remove carpet and contents of spare tire well.

### STEP 5

In preparation for installing new Lightning cable a pass-through in the firewall next to the existing harness pass-through must be cut or the cables may be piggybacked through the O.E harness pass-through by carefully cutting the weather-seal grommet using a blade tool. Care must be exercised when cutting as not to damage O.E. harness. Note: use of grommet is recommended at all sheet metal pass-through to prevent damage to cable insulation which may result in grounding of positive cable to body of vehicle.

**CAUTION: INSTALLATION OF THIS PRODUCT REQUIRES WORKING UNDER THE VEHICLE. IT IS THE RESPONSIBILITY OF THE INSTALLER TO ENSURE A SAFE WORKING ENVIRONMENT. THE USE OF AN AUTOMOTIVE LIFT IS RECOMMENDED. MAKE SURE THAT THE VEHICLE IS SAFELY SUPPORTED AND ALWAYS USE JACK STANDS. ALWAYS WEAR SAFETY GLASSES.**

### STEP 6

From inside passenger foot-well pass both 1/0 positive and negative battery cable as well as #4 gage alternator cable which is required for 2005 to 2010 applications only through access in firewall into engine bay and terminate in approximately the O.E battery location.

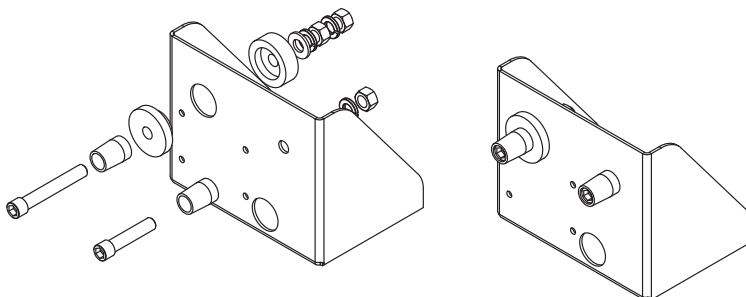
### STEP 7

Route cable through passenger compartment and under rear passenger seat area into trunk where battery box will be located. Cables can be secured to existing harness which is routed alongside rocker panel under carpet.

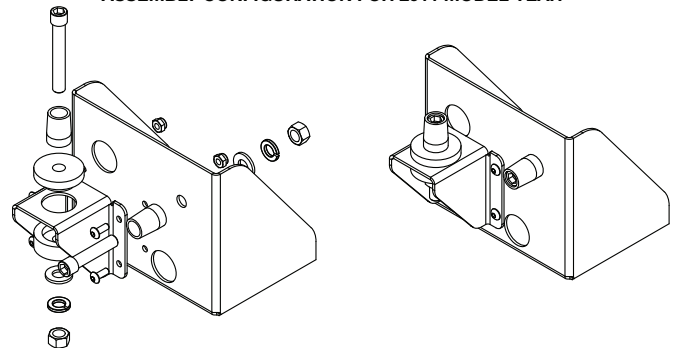
### STEP 8

Inside engine bay install terminal block bracket assembly at O.E battery box location using hardware previously removed in step #2. Note: remove paint where bracket contacts vehicle chassis at bracket mounting points and use dielectric grease to prevent corrosion from occurring. Follow assembly instructions for terminals (see illustrations below and Figure 1) applicable to specific model years. Install appropriate ring terminals to cables and fasten to corresponding posts on terminal block bracket. Install O.E battery cables to appropriate posts on terminal. On model years 2005 to 2010 the alternator lead will be fastened to the new cable with the hardware provided and the connection should be insulated with electrical tape or similar product.

ASSEMBLY CONFIGURATION FOR 2005-2010 MODEL YEAR



ASSEMBLY CONFIGURATION FOR 2011 MODEL YEAR



**STEP 9**

Choose location in trunk for battery box and mount box using hardware supplied. The vent tube must be routed to outside of vehicle (see Figure 2). If an alternator cable is used an additional hole will need to be drilled in the box to allow for cable pass-through. Install cables into battery box and cut to proper length for battery post locations, terminate cable ends with appropriate hardware provided.

**STEP 10**

Reinstall interior panels, inner fender well and front right side wheel. Remove jack stands and place vehicle back on ground.

**STEP 11**

Install battery into newly installed box in trunk and attach battery cables to corresponding terminals of battery. Place cover onto box and fasten with hardware provided.

**NOTE: If installing a Master Battery Disconnect Switch all cables including alternator must route to switch and then to battery. In 2011 applications consult factory wiring schematic for proper alternator disconnect.**

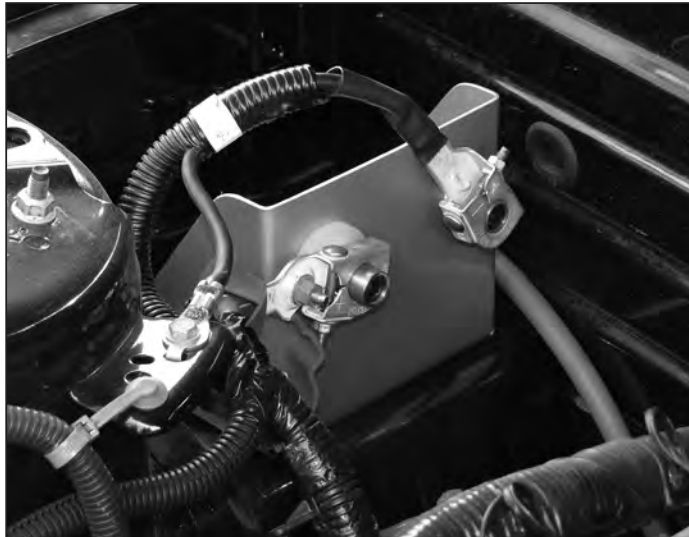


Figure 1



Figure 2