



QUALITY... PLAIN & SIMPLE®

**INSTALLATION INSTRUCTIONS
LOKAR BACK-UP LIGHT OR NEUTRAL SAFETY SWITCH KIT**

Part No BL-1400U
(TH-350, TH-400 & 700-R4)

NOTE: This kit offers the choice of Back-Up Light OR Neutral Safety Switch Kit, Not Both

**WARNING: BEFORE BEGINNING INSTALLATION, BE SURE THAT VEHICLE'S
PARKING BRAKE IS ENGAGED TO PREVENT THE VEHICLE FROM ROLLING**

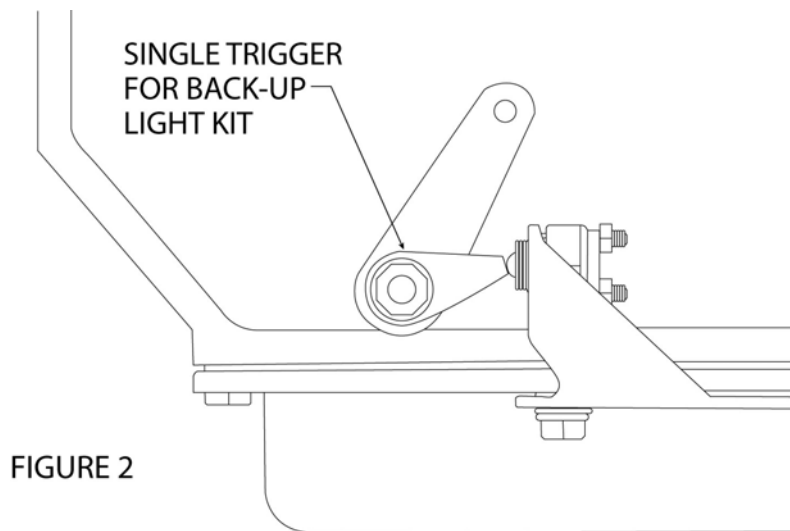
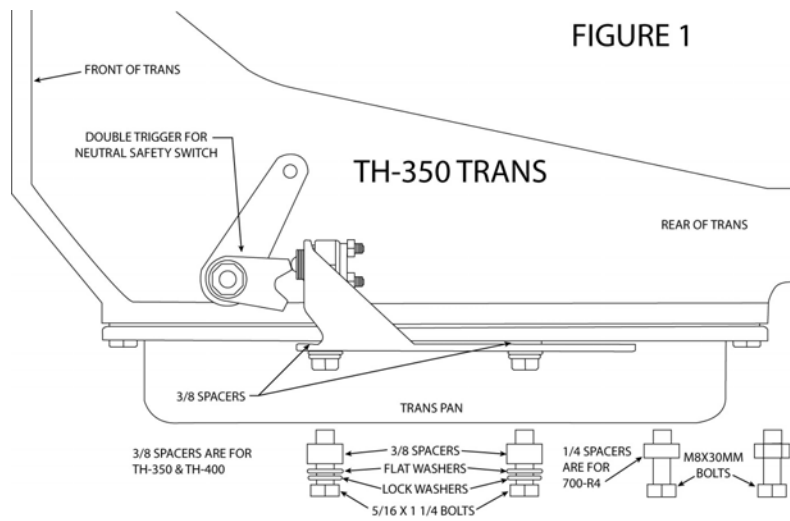
1. **For TH-350 & TH-400 Applications**, first install bracket with switch. Use 3/8" thick spacers between bracket and trans pan. Use flat washer and lock washer on bottom side of bracket. See Fig. 1

For 700-R4 Applications, use 1/4" spacers and two metric bolts supplied with kit.

2. **For Back-Up Light**, install single trigger to trans shaft. Put transmission in reverse and make sure ball switch is depressed and wire in back-up lights. See Fig. 2

For Neutral Safety Switch, install double trigger to trans shaft. Put transmission in park and install double trigger as shown in Fig. 1 so that ball switch is depressed in park. The double trigger should depress the ball switch when transmission is in the neutral position.

LOKAR, INC.
10924 Murdock Drive, Knoxville, TN 37932
Toll Free 1-877-469-7440
Ph: 865-966-2269 Fax: 865-671-1999
E-mail: tech@lokar.com or catalog@lokar.com
www.lokar.com



LOKAR, INC.
 10924 Murdock Drive, Knoxville, TN 37932
Toll Free 1-877-469-7440
 Ph: 865-966-2269 Fax: 865-671-1999
 E-mail: tech@lokar.com or catalog@lokar.com
 www.lokar.com