

## Care and Cleaning

To keep your billet grille looking their best, we recommend using only mild soap and water and a soft cotton cloth to wash and dry it. Use of rough cleaning agents or cloths may scratch or dull your billet grille.

Should your billet grille become scratched or dull, we recommend TRENZ® Metal Polish to bring back the mirror finish. There are three grades of TRENZ® Metal Polish (Coarse, Medium and Fine) that will help you keep your billet grille looking brand new. Select the TRENZ® Metal Polishes best for your needs:

1. Course (Red) Polish – For severe scratches and pitted problems.
2. Medium (Green) Polish – For light scratches and dulling problems.
3. Fine (White) Polish – To bring back the mirror finish.

TRENZ® Metal Polish can be used on all metal products, including aluminum, stainless steel, brass and copper. If you have additional questions or concerns on the maintenance of your Lund® billet grille, please call us at 800-328-5863. You may also use high quality commercially available polish recommended for aluminum accessories.

## Congratulations!

You have purchased one of many quality Lund® branded products offered by Lund International, Inc. We take the utmost pride in our products and want you to enjoy years of satisfaction from your investment. We have made every effort to ensure that your product is top quality in terms of fit, durability, finish and ease of installation.



Lund International, Lund Accessories Division  
775 Tipton Industrial Drive, Building 2, Suite F  
Lawrenceville, GA 30045

Phone 800-328-5863 • Fax 800-782-5448 • Visit us at [lundinternational.com](http://lundinternational.com)

© 2005 Lund International, Inc. All rights reserved.  
Lund® and the Lund® logo are trademarks of Lund International, Inc.



## Installation Instructions

Part Number 89049

I-sheet Rev. A2



## Frame Perimeter Grille

For proper installation and best possible fit, please read all instructions **BEFORE** you begin.  
For technical assistance or to obtain missing parts, please call Customer Relations at 1-800-328-5863.

## Important Safety Information



CAUTION  
PRECAUCIÓN  
ATTENTION

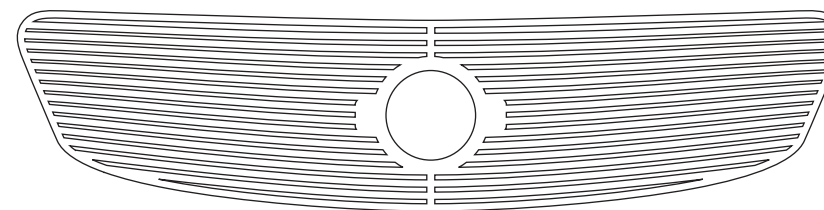
### To avoid risk of personal injury or property damage:

- Wear safety glasses and gloves while installing billet inserts.
- Use caution when working with any power tools.
- Check clearance on vehicle.
- Make sure that the billet inserts are secured in place and clears all moving parts of the vehicle.
- Routinely check security of hardware.
- Do not use automatic “brush-style” car washes.

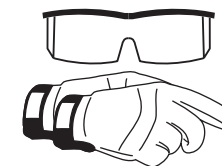
## Contents

Illustrations may vary upon application

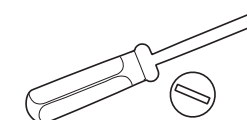
Billet Grille



## Tools Required



Safety Glasses  
and Gloves



Flat Head  
Screwdriver

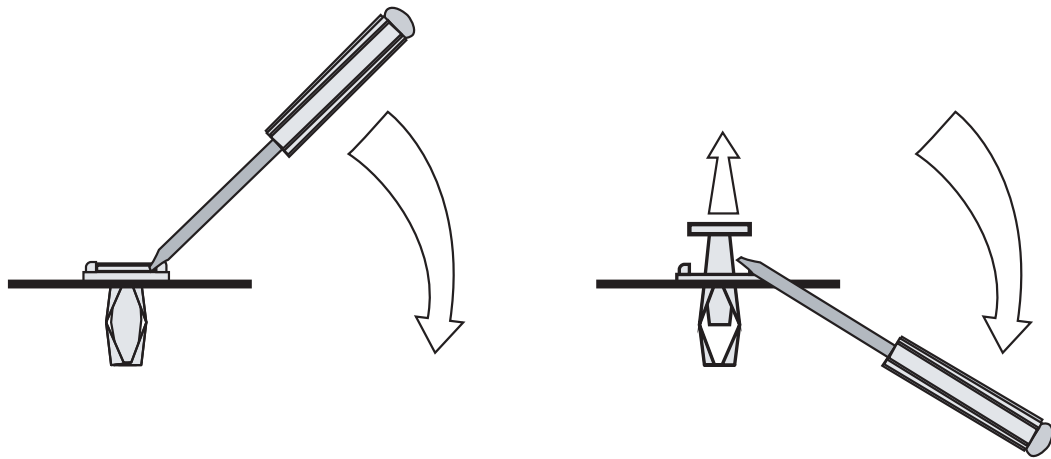
## Shipping Note

Sometimes the billet products get bent in the shipping process. You may need to hand bend them to attain the desired shape.

## Installation Steps

Open the hood. Remove the plastic rivets that are on the stock grille shell. To remove the rivets, pry up the center 1/2" using a flat head screwdriver, then pull the rivet out completely. Save all 4 rivets for installation.

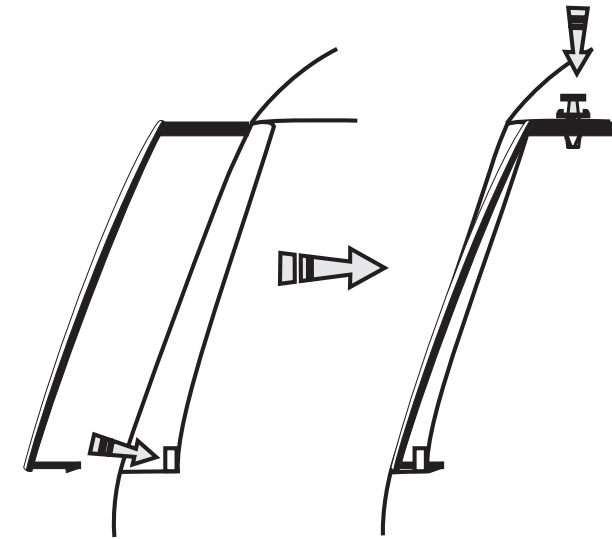
Once all the black plastic rivets are removed, reach down behind the grille shell and pry the 4 clips loose. Now gently remove the stock grille shell.



1

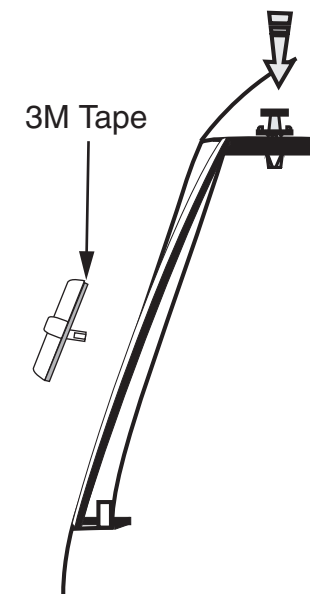
Align the billet grille with the stock grille shell opening. Set the billet grille into place, bottom first. Slide the billet grille mounting tabs into the stock mounting brackets. Make sure that all the mounting tabs slip into place.

Line up the rivet hole on the top brace with the rivet hole on the vehicle. Using the stock plastic rivets, snap the billet grille into place.



2

Use a flat head screwdriver to pry loose the two mounting clips that hold the logo to the grille shell. Remove the logo and wipe down the back of the logo with rubbing alcohol. Apply the 3M Tape to the back of the logo along the edges and cut off any excess tape. Align the logo with the logo cut out on the billet grille and press the logo firmly to the billet grille.



3