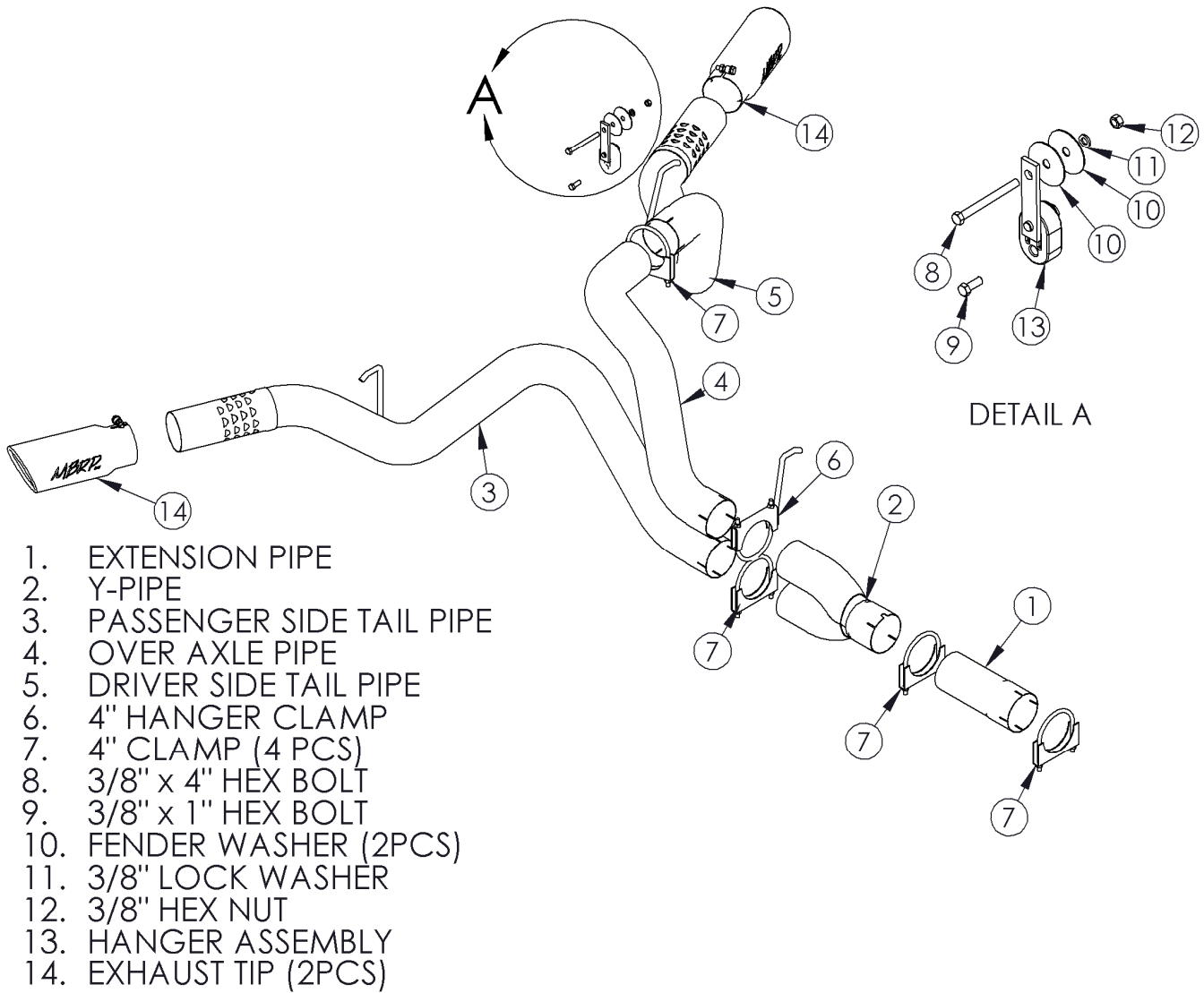


S6034

2011 CHEVY/GMC DURAMAX, 2500/3500,
EC/CC, 4" PARTICULATE FILTER BACK
"COOL DUALS"™



PLEASE READ BEFORE STARTING INSTALLATION

While MBRP Inc. has made every effort to ensure that all components of this system are of superior quality and properly packaged it is the installer's responsibility to ensure the following before removal of the factory exhaust:

- that ALL components shown above are present.
- that ALL mating components fit together.
- that there are no damaged components.
- that the system you have purchased is appropriate for your vehicle year, model and configuration.
- that the system will not interfere with any modifications previously installed or planned.
- that you have read and understand these instructions.

If you have any questions or are uncertain about any aspect of the installation of this system to your vehicle please contact your dealer before commencing installation.

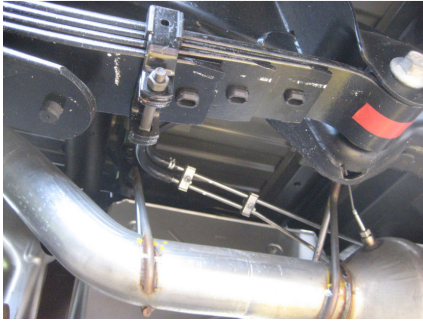


Figure 1



Figure 2

Removal of Stock System:

1. Apply a penetrating lubricant liberally to all exhaust fasteners, hangers and rubber isolators.
2. Refer to the illustration in **Figure 3** and the chart below to determine where to cut the existing exhaust rear of the particulate filter.

Cab Style	Box Style	Wheelbase	Dimension A	Extension pipe
CREW	8' 2"	167.7"	14"	YES
	6' 6"	154.2"	6"	NOT REQUIRED
EXTENDED	8' 2"	157.7"	14"	YES
	6' 5"	144.2"	6"	NOT REQUIRED

3. Remove the factory tail pipe assembly from the factory rubber isolators. Remove the tail section from the vehicle. Refer to **Figures 1 & 2**.

Installation of MBRP Inc. Performance Exhaust:

Note; the **Extension Pipe** will only be used with some applications. The photos shown are of the installation of an Extended Cab with a Standard Box (144.2" wheelbase).

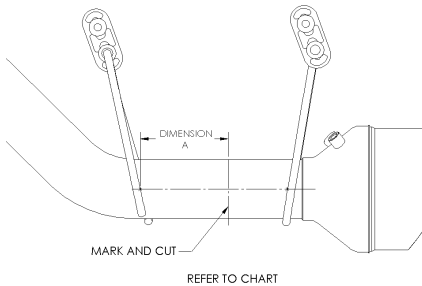


Figure 3

1. Using the clamps provided install **Extension Pipe** or **Y-Pipe** to the pipe behind the particulate filter. Refer to **Figure 4** and the chart above.

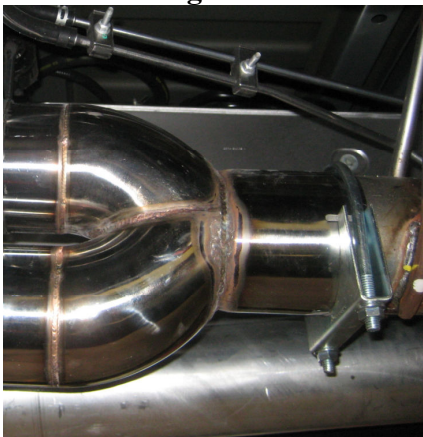


Figure 4



Figure 5

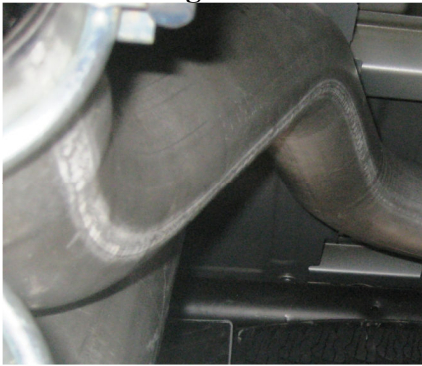


Figure 6



Figure 7



Figure 8



Figure 9

2. Use the **4" Hanger Clamp** to install the **Over Axle Pipe** to the **Y-Pipe**. The expanded end slides over the upper outlet of the **Y-Pipe**. Refer to **Figure 5 & 6**.
3. Slide a **4" Clamp** over bottom outlet of the **Y-Pipe**. Install the **Passenger Side Tail Pipe** from the rear of the truck, over the axle and slide on the lower outlet of the **Y-Pipe Assembly**. Install the Tail Pipe hanger into the factory rubber insulators. Refer to **Figures 5 & 7**.
4. Slide a **4" Clamp** over the outlet of the **Over Axle Pipe**. Install the **Driver Side Tail Pipe** from the rear of the truck, between the shock and spare tire and slide the expansion over the outlet of the **Over Axle Pipe**. Refer to **Figure 9**.
5. Install the **Hanger Kit** on the frame in the large existing hole as shown. Secure with the supplied **3/8"** hardware, refer to **Detail A** in the **Illustration**. Refer to **Figures 8**. **Note:** the **3/8" x 1" Hex bolt** will be used with a 3500 Dual Wheeled vehicle and be mounted through the inside frame rail only.
6. Install the **Driver Side Tail Pipe** hanger into the **Hanger Kit** previously installed in **Step 5**. Refer to **Figure 9**.



Figure 10

7. Install and adjust the **Tips** to your preference. Secure the **Tips** by tightening the 10mm bolt with a 17mm wrench. **Refer to Figure 10.**
8. Align the **Tail Pipes** and tighten **Clamps** starting at the front and working rearward to secure the system.
9. Check along the full length of the exhaust system to ensure there is adequate clearance for fuel lines, break lines, and any wiring, etc. If any interference is detected, relocate or adjust to provide adequate clearance.



Figure 11

Congratulations! You are ready to begin experiencing the improved performance and driving pleasure of your MBRP Inc. performance exhaust system. We know you will enjoy your purchase.