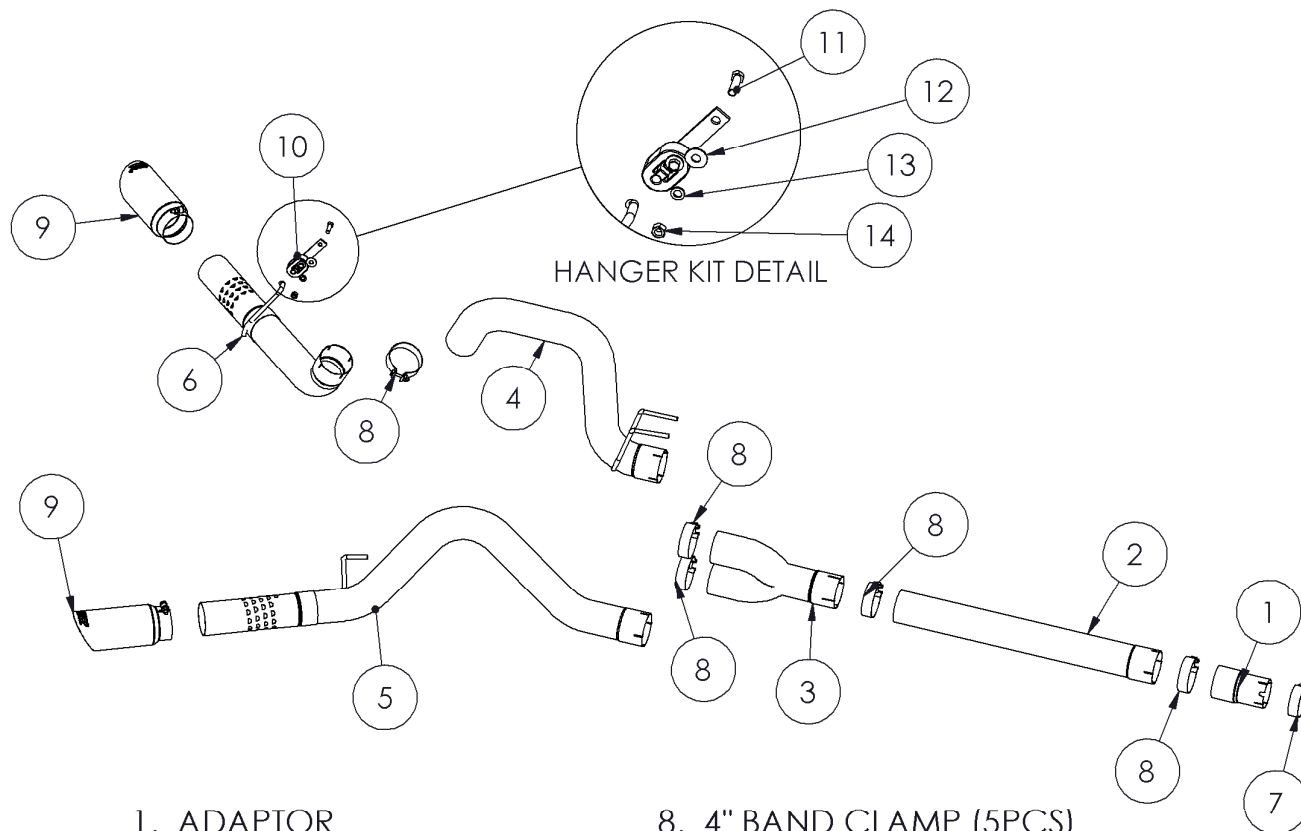


S6244304 S6244409 S6244AL

08 FORD SUPER DUTY 6.4L POWERSTROKE
DIESEL, PARTICULATE FILTER BACK, COOL
DUALS

MBRP
INC.

PERFORMANCE EXHAUST



1. ADAPTOR
2. EXTENSION PIPE
3. Y PIPE
4. OVER AXLE PIPE
5. PASSENGER SIDE TAIL PIPE
6. DRIVER SIDE TAIL PIPE
7. 3.5" BAND CLAMP

8. 4" BAND CLAMP (5PCS)
9. EXHAUST TIP (2PCS)
10. HANGER KIT
11. 7/16 BOLT
12. 7/16 FLAT WASHER
13. 7/16 LOCK WASHER
14. 7/16 NUT

PLEASE READ BEFORE STARTING INSTALLATION

While MBRP Inc. has made every effort to ensure that all components of this system are of superior quality and properly packaged, it is the installer's responsibility to ensure the following before removal of the factory exhaust:

- that ALL components shown above are present.
- that ALL mating components fit together.
- that there are no damaged components.
- that the system you have purchased is appropriate for your vehicle year, model and configuration.
- that the system will not interfere with any modifications previously installed.
- that you have read and understand these instructions.

If you have any questions or are uncertain about any aspect of the installation of this system to your vehicle please contact your dealer before commencing installation.

Installation Instructions for Systems S6244304, S6244409 & S6244AL

08 Ford 6.4L Powerstroke Diesel Extended Cab Short & Long Bed, Crew Cab Short & Long Bed

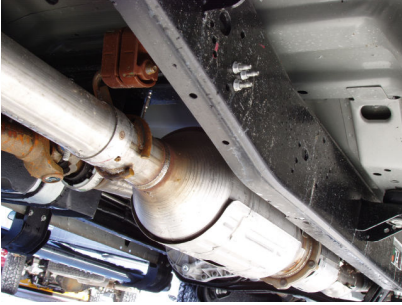


Figure 1



Figure 2

Removal of Stock System:

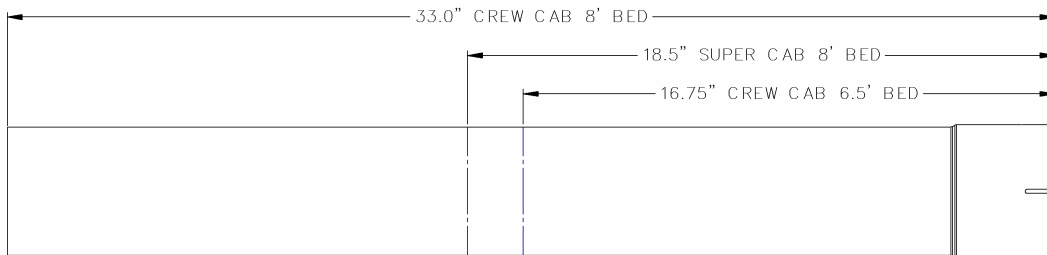
1. Apply a penetrating lubricant liberally to all exhaust fasteners, hangers and rubber insulators.
2. Loosen the nut on the band clamp located behind the particulate filter using a 15mm wrench or socket. **See Figure 1.**
3. Remove the muffer and tail pipe from the OEM rubber hangers. Cut exhaust as shown in **Figure 2**. Remove from vehicle.

Installation of MBRP Inc. Performance Exhaust:

1. Install the **Adaptor** over the particulate filter using the **3.5" Band Clamp**. Leave the band clamp loose until final alignment. **See Figure 3.**
2. The **Extension Pipe** provided is pre-cut for the crew cab long bed configuration. Cut **Extension Pipe** to length as required. **See Figure 4.** The **Extension Pipe** is not required on a super cab short box (6.5'). Slide a **4" Band Clamp** over the **Extension Pipe** and install onto the **Adaptor** installed in Step 1. The clamp should remain loose enough for adjustability.



Figure 3



NOT REQUIRED ON SUPER CAB WITH 6.5' BED

Figure 4

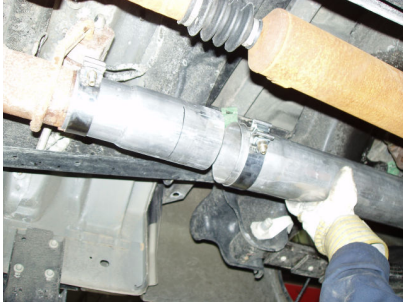


Figure 5

3. Slide a **4" Band Clamp** onto the **Y Pipe**. Install the **Y Pipe** over the **Extension Pipe**. Note on the super cab 6.5' bed it would be installed to the **Adaptor**.

4. Slide a **4" Band Clamp** onto the lower **Y Pipe**. Install the **Passenger Side Tail Pipe** from the rear of the truck, over the axle and attach to the lower section of the **Y Pipe**. Install the tail pipe hanger into the OEM hanger, adjusting for best axle clearance and tail pipe exit location, leave the tail pipe loose enough for adjustment.



Figure 6

5. Slide a **4" Band Clamp** onto the upper section of the **Y Pipe**. Install the **Over Axle Pipe** from the rear of the truck, over the axle and attach to the upper section of the **Y Pipe**. Install the **Over Axle Pipe** into the OEM hangers, slide clamps into position but don't tighten.

6. Install the **Hanger Kit** on the driver's side of the vehicle. **See Figure 7**. Slide a **4" Band Clamp** onto the end **Driver Side Tail Pipe** then attach to the **Over Axle Pipe**. **See Figure 8**.

7. Install and adjust **Exhaust Tips** to suit. Using a 17mm wrench tighten the lock bolt located on each **Exhaust Tip**.

8. Check along the whole length of the exhaust system to ensure that there is **adequate clearance around the fuel and brake lines or any wiring**. If any interference is detected relocate or adjust.

9. Make sure everything is in place before tightening the clamps. Start at the front of the exhaust system and begin tightening all connections.



Figure 7



Figure 8



Congratulations! You are ready to begin experiencing the improved power, sound and driving experience of your MBRP Inc. performance exhaust system. We hope you enjoy your purchase.