



99-2001

APPLICATIONS

GM MULTI KIT

99-2001 AW-200GM

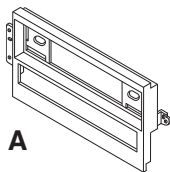


KIT FEATURES

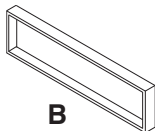
- DIN Head Unit w/ Equalizer Provision

KIT COMPONENTS

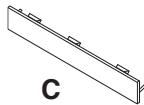
- A) Radio Housing
- B) Spacer
- C) Equalizer Dummy Plate
- D) Shaft Masks



A



B



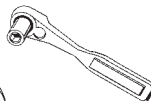
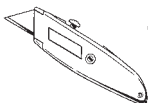
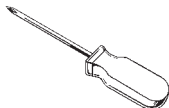
C



D

TOOLS REQUIRED:

- Phillips Screwdriver
- Utility Knife
- Socket Wrench



1-800-221-0932



www.metraonline.com

© COPYRIGHT 2004-2007 METRA ELECTRONICS CORPORATION



VEHICLE APPLICATION CONTENTS

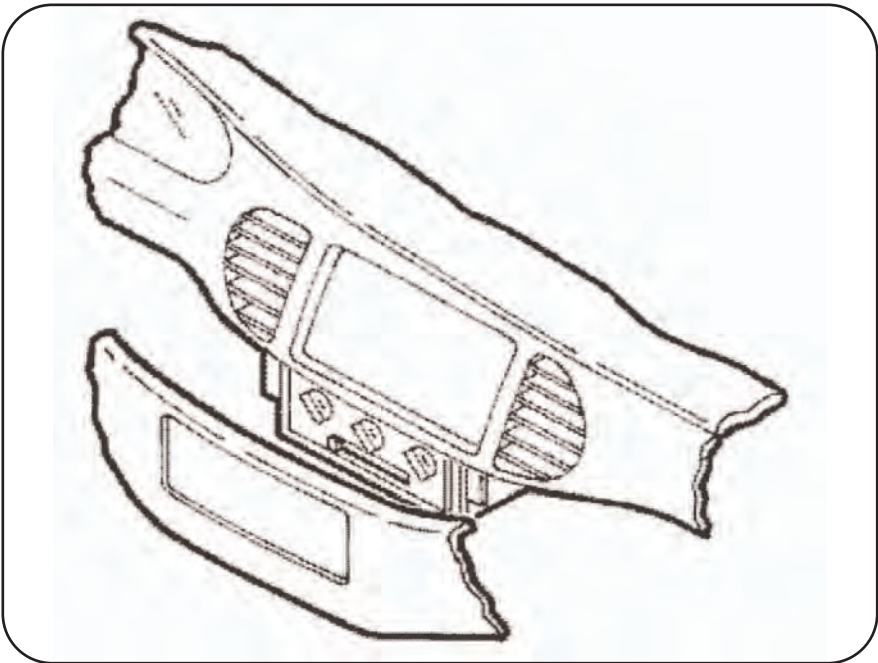
BUICK			
Century	1997-2005	3	
Le Sabre	1995-2005	4,5	
Park Avenue	1995-2005	4,5	
Rainier	2004-2007	23	
Regal	1995-2004	3	
Rendezvous	2002-2007	6	
Riviera	1996-1999	7	
Roadmaster	1995-1996	8	
Skylark	1996-1998	9	
CADILLAC			
Escalade	2003-2006	10	
CHEVROLET / GEO			
Avalanche	2003-2006	10	
Blazer	2002-2005	11	
Cavalier	2000-2005	12	
Colorado	2004-2008	35	
Express Van	2001-2007	13,14	
Impala	2000-2005	15	
Malibu	2001-2003	16	
Malibu Classic	2004-2005	16	
Monte Carlo	2000-2005	17	
S-10	2002-2004	11	
Silverado	2003-2006	10	
Silverado Classic	2007	10	
Suburban	2003-2006	10	
Tahoe	2003-2006	10	
Trailblazer	2002-2007	18	
Venture	2000-2005	19, 20	
GMC			
Canyon	2004-2008	35	
Denali	2003	10	
Envoy	2002-2007	23	
Savanna	2001-2007	13,14	
Sierra	2003-2006	10	
Sierra Classic	2007	10	
Sonoma	2002-2004	11	
Yukon/Denali/XL	2003-2006	10	
HUMMER			
H2	2003-2007	21,22	
ISUZU			
Ascender	2003-2005	28	
I Series Truck	2006-2008	35	
OLDSMOBILE			
Achieva	1996-1998	24	
Alero	1999-2004	25	
Aurora	1995-2003	26	
Bravada	1998-01	11	
Bravada	2002-04	23	
Cutlass	1997-1999	27	
Cutlass Supreme	1995-1997	27	
Eighty-Eight	1994-1999	28	
Intrigue	1998-2002	29	
LSS	1996-1999	30	
Ninety-Eight	1994-1996	28	
Regency	1997-1998	30	
Silhouette	2000-2004	19, 20	
PONTIAC			
Aztec	2001-2005	31	
Bonneville	2000-2005	32	
Grand Am	2001-2005	33	
Montana	2000-2005	19, 20	
Sunfire	2000-2005	34	
ALL VEHICLES			
Kit Assembly		36-37	
Final Assembly		38	
Notes		39	

BUICK • Century 1997-04 / Regal 1997 - 04

Disconnect the negative battery terminal to prevent an accidental short circuit.

1. Open both doors and remove end caps from both ends of dashboard.
2. Open glove box, then remove (1) 9/32" screw from panel above passenger kick panel and remove.
3. Remove 9/32" screws from bottom left and right of ashtray assembly and unclip and remove.
4. Unclip top edge of panel below steering column and let hang.
5. Remove (1) 9/32" screw from right side of instrument cluster and radio trim panel and remove entire panel from right to left.
6. Remove (3) 9/32" screws to remove radio.

Continue to kit assembly.

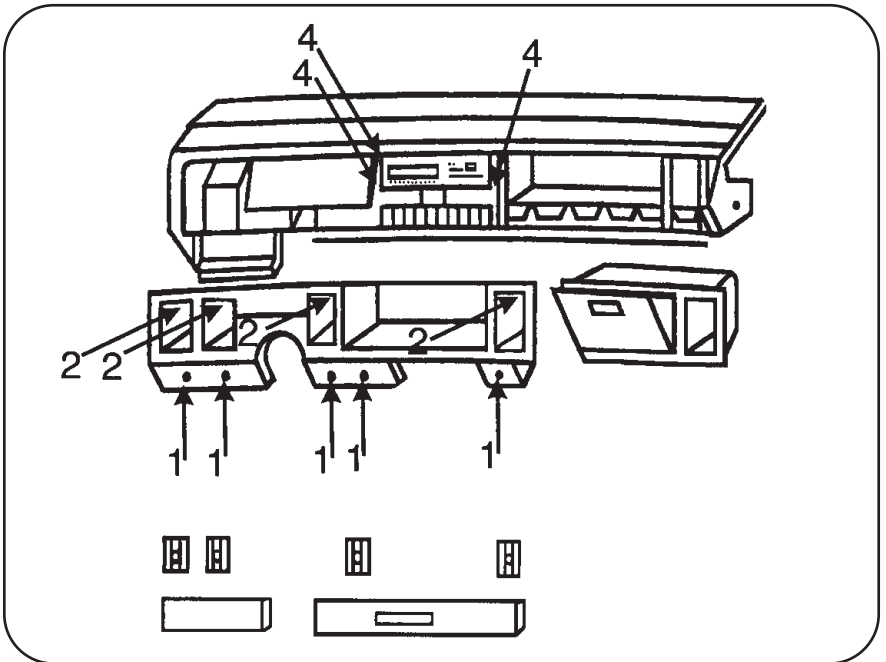


BUICK • LeSabre 1995-99 / Park Avenue 1995-99

Disconnect the negative battery terminal to prevent an accidental short circuit.

1. Unsnap the climate control trim panel (from door to door) and remove (5) 9/32" screws exposed.
2. Pop out the a/c vents and remove (1) Phillips screw exposed in each vent cavity.
3. Unclip the radio trim bezel and remove.
4. Remove the screws securing the factory head unit and disconnect the wiring.

Continue to kit assembly.

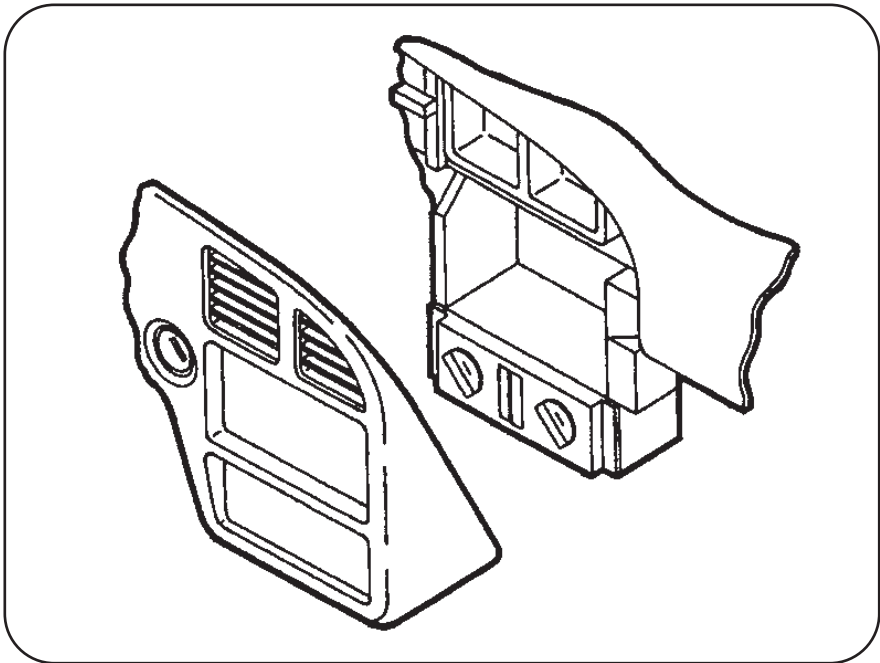


BUICK • LeSabre 2000-04 / Park Avenue 2000-04

Disconnect the negative battery terminal to prevent an accidental short circuit.

1. Open drivers door and unsnap and remove dash end cap.
2. Remove (2) Phillips screws from underneath steering column cover.
3. Unsnap and remove steering column cover.
4. Unsnap and remove instrument panel.
5. Remove (2) 9/32" screws and remove radio.

Continue to kit assembly.

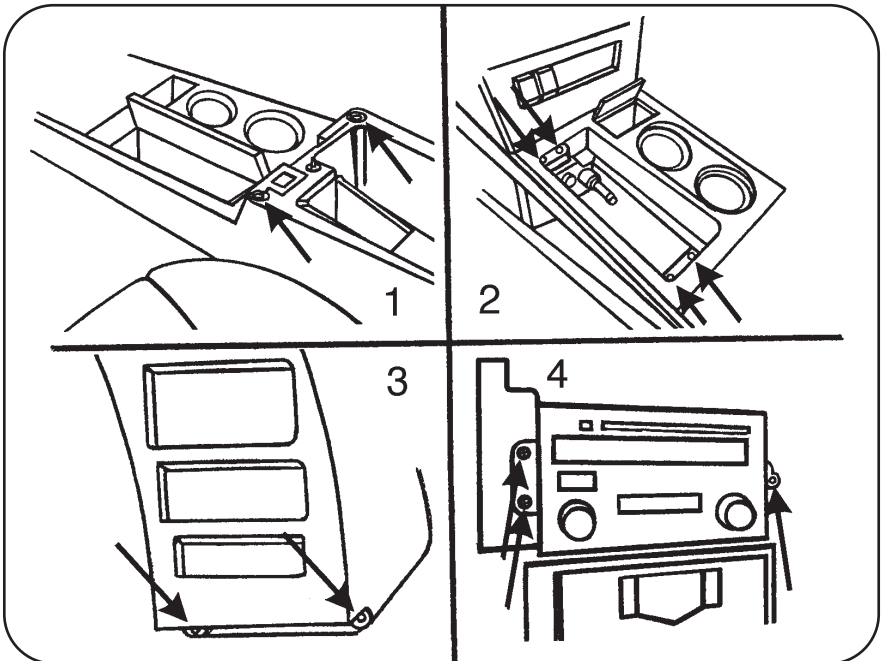


BUICK • Rendezvous 2002-04

Disconnect the negative battery terminal to prevent an accidental short circuit.

1. Open center console and remove 2 screws at front of console opening.
2. Remove liners from cup holders and storage pocket next to cup holders, then remove screws. Unsnap and remove panel.
3. Remove (2) screws from bottom of radio/climate control bezel, unclip and remove.
4. Remove (3) 9/32" hex head screws to remove radio.

Continue to kit assembly.

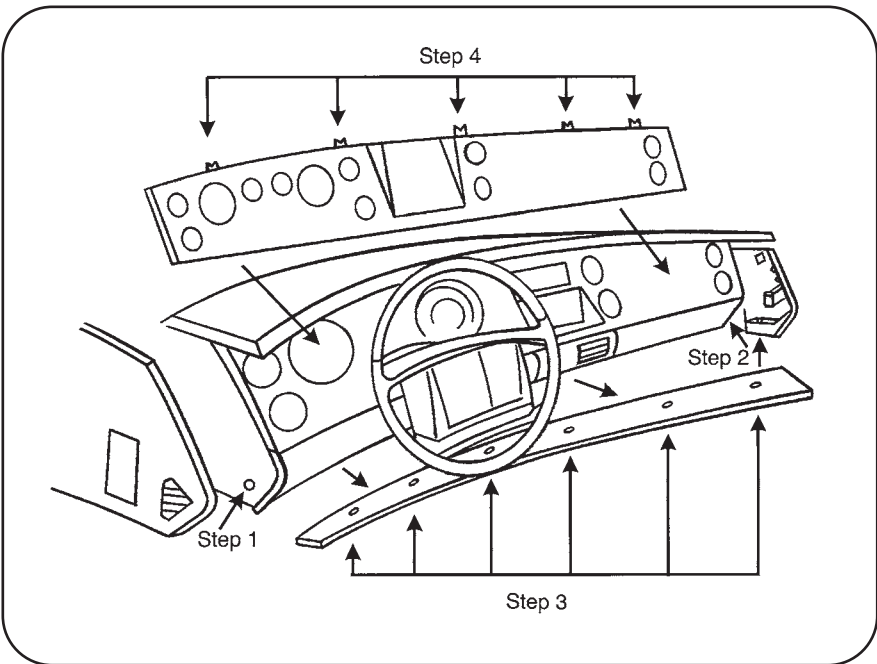


BUICK • Riviera 1996-99

Disconnect the negative battery terminal to prevent an accidental short circuit.

1. Unsnap left side panel exposing (1) Phillips screw to remove.
2. Remove (1) Phillips screw and unsnap right side panel to expose (1) Phillips screw beneath panel and remove.
3. Unsnap underside of overhanging dash to unsnap (6) plastic rivets and remove panel.
4. Remove (5) hex head screws now exposed under overhang.
5. Unsnap bottom edge of trim bezel, then while holding overhang up, unsnap and remove trim bezel by removing any necessary harnesses.
6. Remove (3) Phillips screw to remove climate control.
7. Remove (2) Phillips screws to remove rear support and (3) 9/32" hex head screws to remove radio.

Continue to kit assembly.

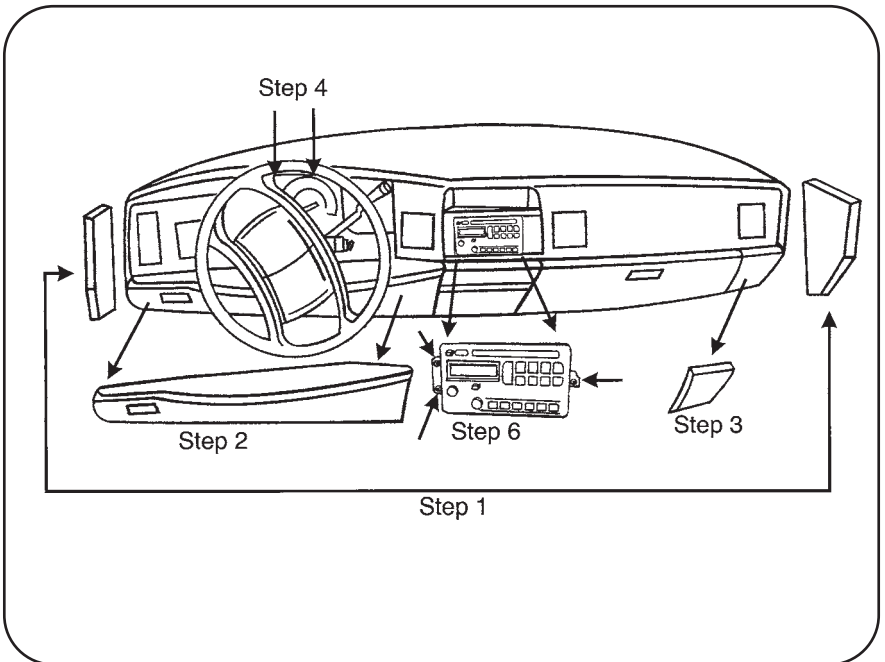


BUICK • Roadmaster 1995-96

Disconnect the negative battery terminal to prevent an accidental short circuit.

1. Unclip dash panel sides and remove.
2. Unclip panel below steering column and remove.
3. Unclip panel next to glove box on passenger side and remove.
4. Remove (2) 7mm screws above instrument cluster.
5. Set parking brake, turn car on, and move shifter to the lowest gear. Tilt steering wheel down then unsnap entire instrument cluster/radio panel and remove.
6. Remove (3) 7mm screws to remove radio.

Continue to kit assembly.

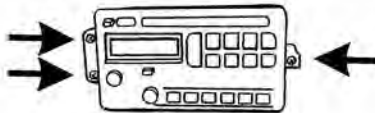
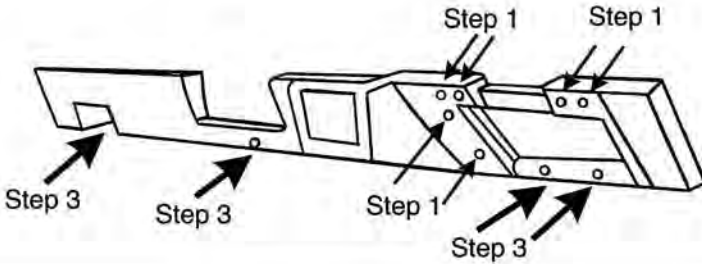


BUICK • Skylark 1996-98

Disconnect the negative battery terminal to prevent an accidental short circuit.

1. Remove (6) 9/32" screws inside glove box.
2. Under glove box and drivers knee bolster, remove (2) plastic panels by turning (2) 1/4 turn fasteners per side.
3. Remove (4) 9/32" screws revealed. (2 per side).
4. Unsnap panel from driver's side to passenger's side.
5. Remove (3) 9/32" screws to remove radio.

Continue to kit assembly.



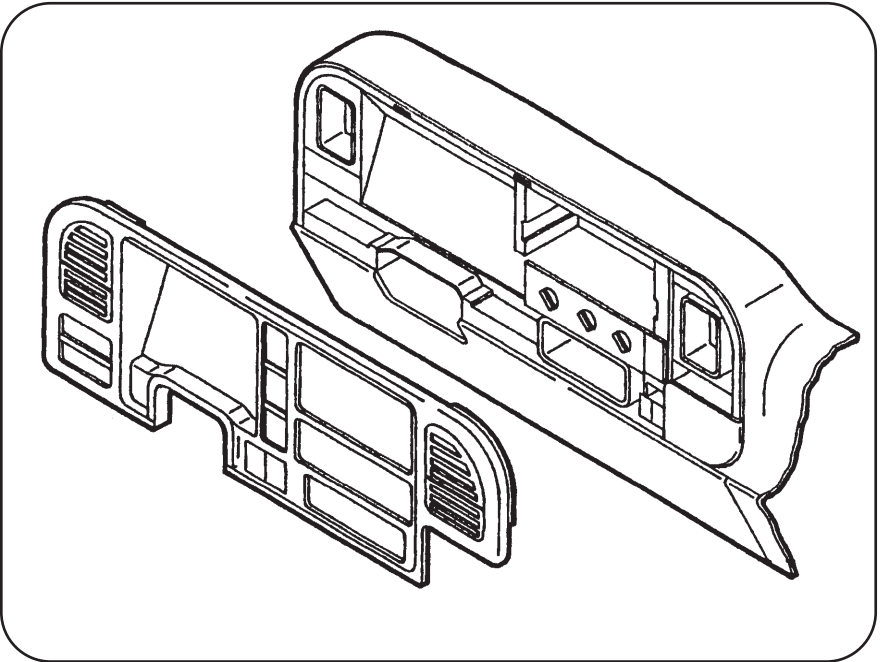
Step 5

CADILLAC • Escalade 2003-04
CHEVROLET • Avalanche 2003-04
Silverado 2003-04 / Suburban 2003-04
Tahoe 2003-04
GMC • Sierra 2003-04
Yukon / Denali / XL 2003-04

Disconnect the negative battery terminal to prevent an accidental short circuit.

1. Unsnap and remove dash bezel.
2. Remove (3) 9/32" screws and remove radio.

Continue to kit assembly.

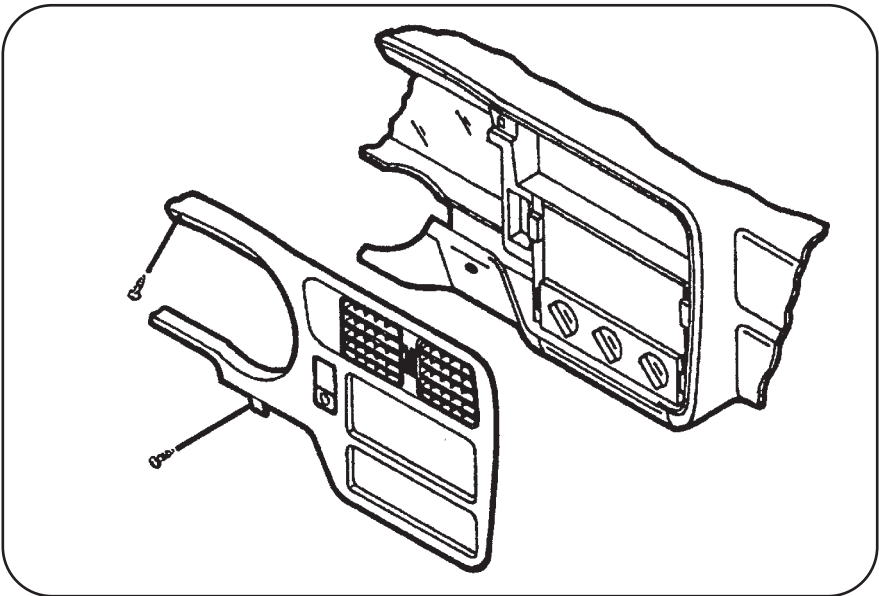


CHEVROLET • Blazer 2002-04 / S-10 2002-04
GMC • Sonoma 2000-04
OLDSMOBILE • Bravada 1998-01

Disconnect the negative battery terminal to prevent an accidental short circuit.

1. Remove (2) 9/32" hex-head screws from the knee bolster.
2. Pull down on the bolster and remove 9/32" screws exposed on the base of the dash trim bezel.
3. Remove (1) Phillips screw above the instrument cluster.
4. Unclip the dash trim bezel and remove.
5. Unclip the dash trim bezel and remove.

Continue to kit assembly.

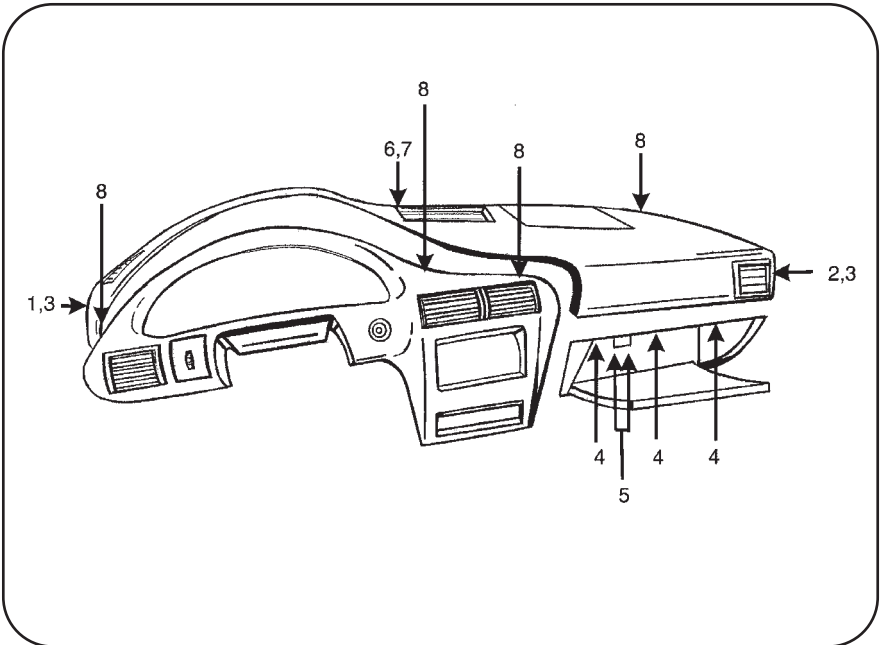


CHEVROLET • Cavalier 2000-04

Disconnect the negative battery terminal to prevent an accidental short circuit.

1. Open driver door and remove fuse panel on the end of dash.
2. Open passenger door and remove panel on end of dash.
3. Remove (1) Phillips screw from each side exposed.
4. Remove (3) screws from top of glove box liner.
5. Remove (2) screws from the top-left corner of the glove box cavity.
6. Remove (1) Phillips screw from the defroster duct.
7. Remove the duct work and (1) Phillips screw exposed.
8. Remove the dash pad and (3) Phillips screws exposed at the top of the radio trim bezel.

Continue to kit assembly.

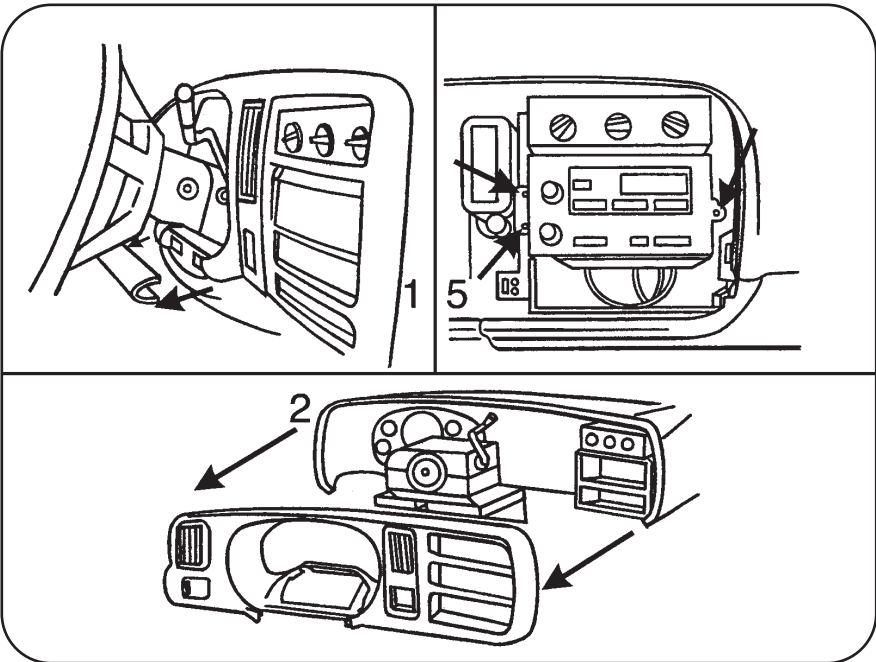


CHEVROLET • Express Van 2001-02 / GMC • Savanna 2001-02

Disconnect the negative battery terminal to prevent an accidental short circuit.

1. Unsnap and remove small trim panel below steering column.
2. Unsnap radio/climate/instrument panel.
3. Move shift lever to first gear position.
4. Rotate panel counterclockwise to lift over steering column and remove.
5. Remove (3) 9/32" hex head screws to remove radio.

Continue to kit assembly.

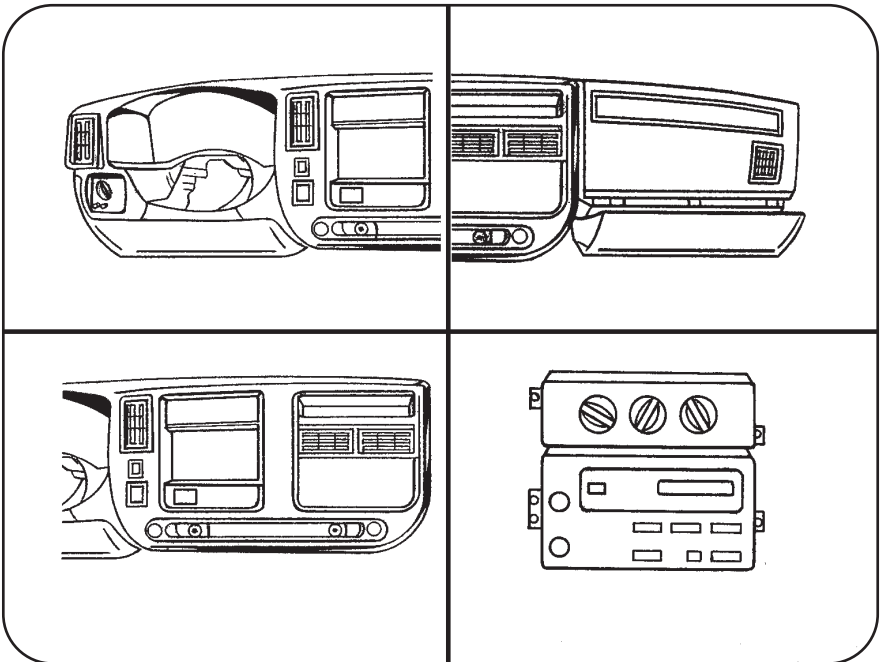


CHEVROLET • Express Van 2003-04 / GMC • Savanna 2003-04

Disconnect the negative battery terminal to prevent an accidental short circuit.

1. Remove (2) 10mm bolts from below knee bolster under steering column and remove panel.
2. Remove (2) 10mm bolts from panel below passenger dash air bag and remove panel.
3. Remove (2) 10mm nuts from inside center pocket between power outlets.
4. Unsnap and remove radio and instrument cluster panel. (May not be necessary to completely remove radio and instrument cluster panel to access radio.)
5. Remove (3) 9/32" bolts to remove radio.

Continue to kit assembly.

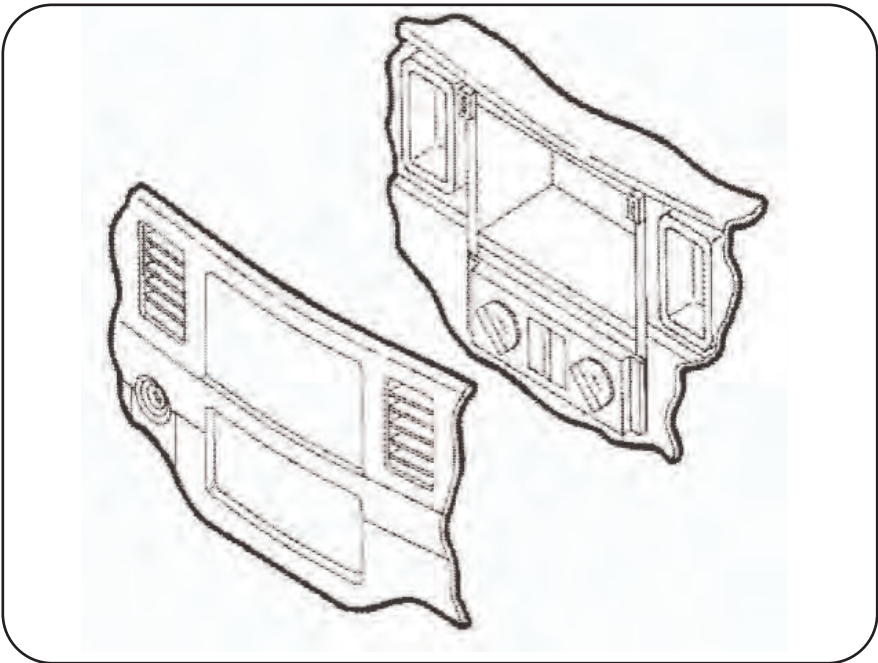


CHEVROLET • Impala 2000-04

Disconnect the negative battery terminal to prevent an accidental short circuit.

1. Unclip each side of the dash trim bezel (fuse access) and remove (1) Phillips screw exposed on each side.
2. Remove (2) Phillips screws under the instrument cluster.
3. Unclip the trim panel above the pedals. (It is not necessary to remove the panel, it can be left hanging.)
4. Remove (2) Phillips screws from under the knee panel.
5. Unclip the knee panel and remove (1) Phillips screw exposed on the right side of the steering column.
6. Unclip and remove the entire dash trim bezel.

Continue to kit assembly.

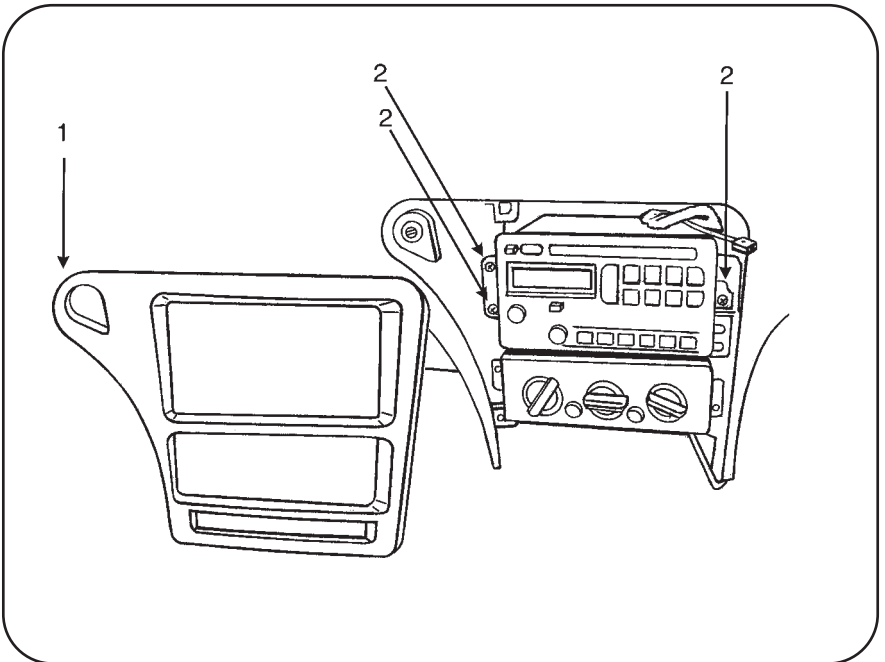


CHEVROLET • Malibu 2001-03 / Malibu Classic 2004

Disconnect the negative battery terminal to prevent an accidental short circuit.

1. Unsnap and remove radio bezel.
2. Remove (3) 9/32" hex head screws and remove radio.

Continue to kit assembly.

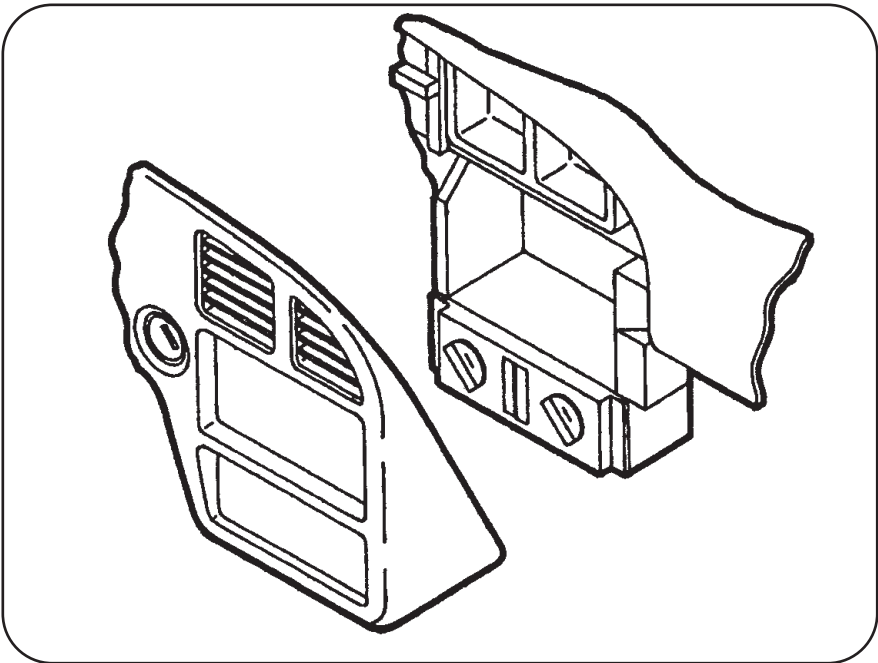


CHEVROLET • Monte Carlo 2000-04

Disconnect the negative battery terminal to prevent an accidental short circuit.

1. Unclip the trim panel above the pedals. (It is not necessary to remove the panel, it can remain hanging.)
2. Remove (2) 9/32" screws from the knee panel and unclip the panel.
3. Unsnap the driver's side fuse panel cover and remove (1) 9/32" screw.
4. Open the glove box and remove (1) 9/32" screw from the upper left corner.
5. Remove (3) 9/32" screws securing the factory radio and disconnect the wiring.

Continue to kit assembly.

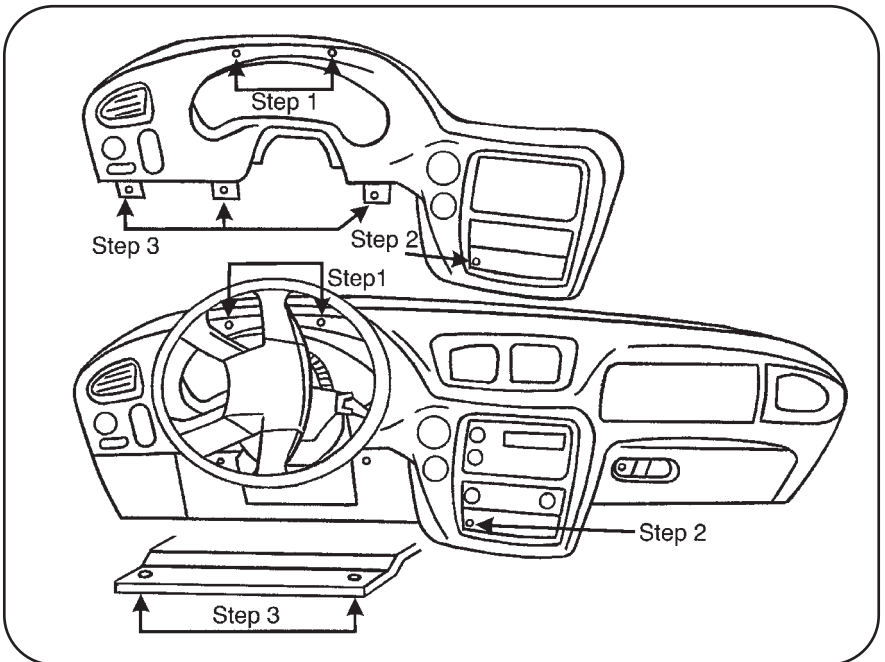


CHEVROLET • Trailblazer 2002-04

Disconnect the negative battery terminal to prevent an accidental short circuit.

1. Remove (2) Phillips screws inside instrument cluster.
2. Remove (1) Phillips screw under climate controls to the left of the power outlet.
3. Remove (2) 7mm hex heads from under steering column and lower the panel. Remove (3) Phillips screws around steering wheel.
4. Unsnap and remove bezel. (Use caution pulling over hazard switch.)
Remove (3) 7mm hex head screws to remove radio.

Continue to kit assembly.

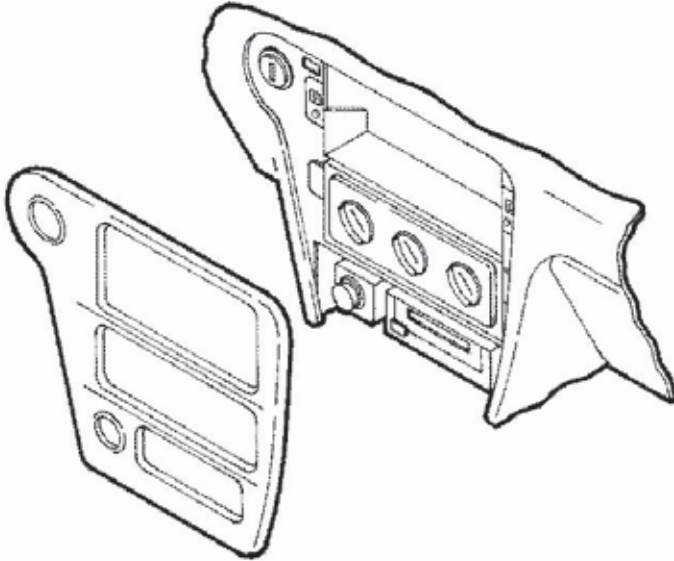


**CHEVROLET • Venture 2000
OLDSMOBILE • Silhouette 2000
PONTIAC • Montana 2000**

Disconnect the negative battery terminal to prevent an accidental short circuit.

1. Remove the ashtray and (1) Phillips screw exposed in the ashtray cavity.
2. Remove (1) Phillips screw from the cigarette lighter compartment.
3. Remove (3) 9/32" hex-head screws securing the factory head unit and disconnect the wiring.

Continue to kit assembly.

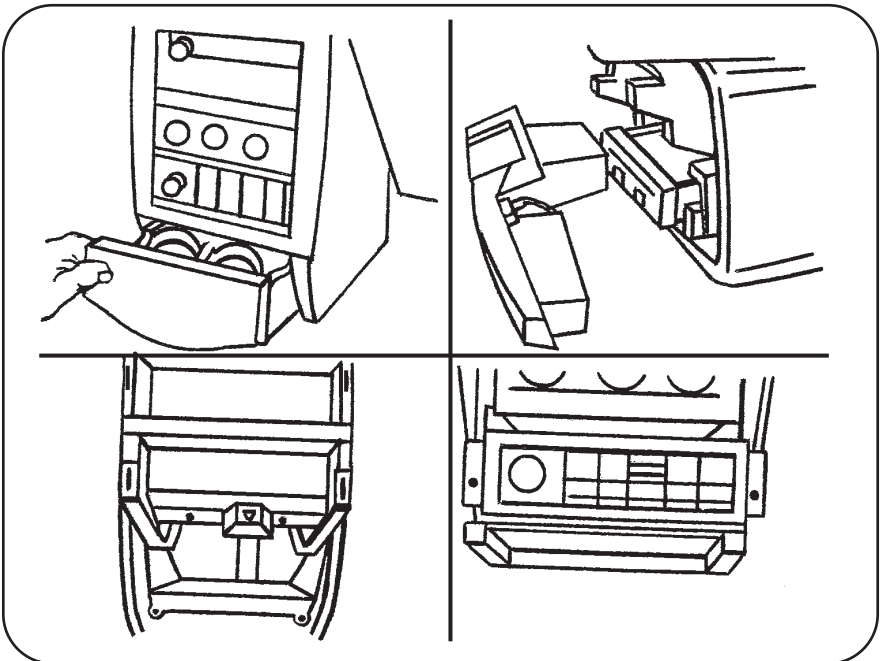


**CHEVROLET • Venture 2001-04
 OLDSMOBILE • Silhouette 2001-04
 PONTIAC • Montana 2001-04**

Disconnect the negative battery terminal to prevent an accidental short circuit.

1. Open cup holders and remove (2) Phillips 7mm screws.
2. Unsnap and remove dual power outlet assembly from lower storage.
3. Open lower storage door and remove (2) 7mm screws inside.
4. Models with DVD - Remove DVD player and remove (2) 7 mm screws from behind and (2) 7 mm screws near the floor.
5. Remove lower storage compartment .
6. Remove (2) 7mm screws (facing up) from under cup holder.
7. Remove (3) 7mm hex-head screws and remove radio.

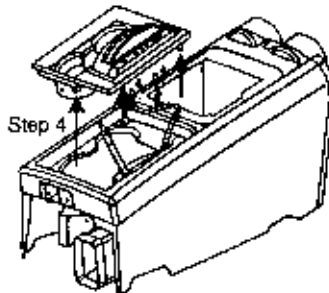
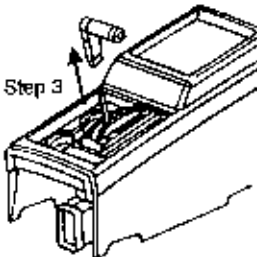
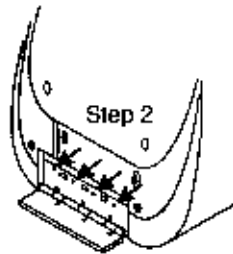
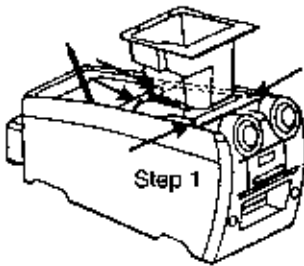
Continue to kit assembly.



HUMMER • H2 2003-2004

Disconnect the negative battery terminal to prevent an accidental short circuit.

1. Open center console and remove (4) 9/32" screws from console box and remove box.
2. Remove (4) phillips screws from hinge on console door inside console and remove door.
3. Loosen (1) T-15 torx on forward facing side of shift lever and pull up to remove.
4. Unclip cup holder/shifter trim assembly and remove.
5. Remove (6) phillips screws from top of center console.
6. Remove (2) phillips screws from inside pocket on back of center console, then unclip and remove. Continue to kit assembly.

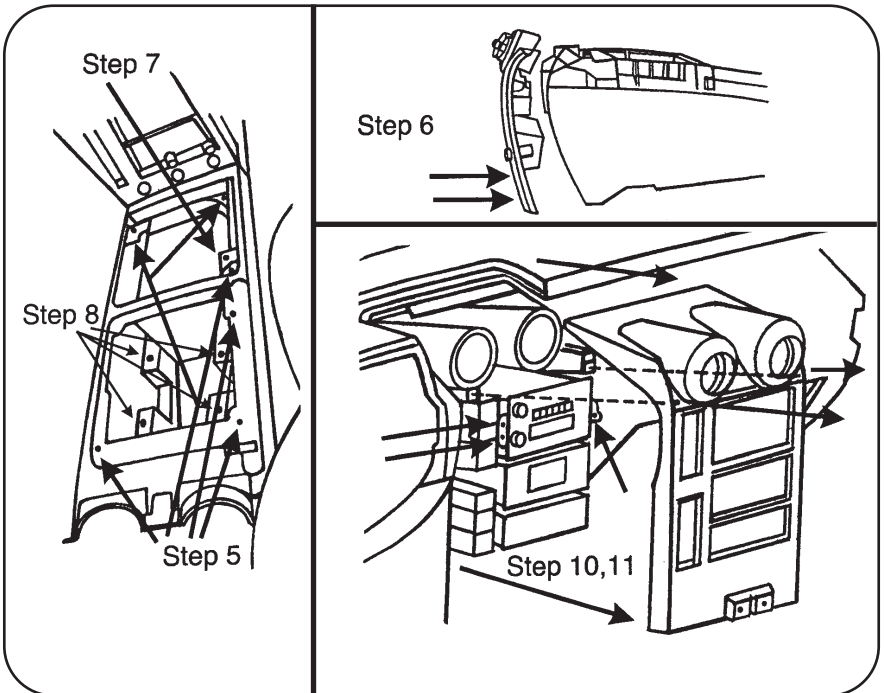


HUMMER • H2 2003-2004

Disconnect the negative battery terminal to prevent an accidental short circuit.

7. Remove (1) 10mm bolt to right of shift lever.
8. Remove (2) phillips screws from under console box on drivers side and (2) phillips screws from under console trim top on passenger side.
9. Slide control assembly rearward.
10. Remove (2) T-30 torx bolts from top of radio/climate control trim and unclip and remove.
11. Remove (3) 9/32" screws that hold the radio in.

Continue to kit assembly.

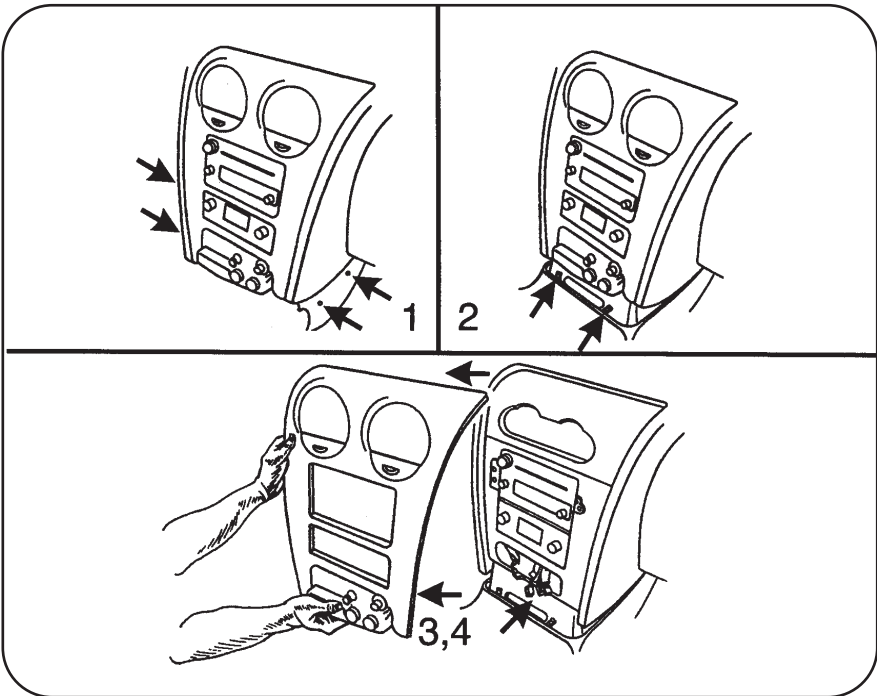


**GMC • Envoy 2002-04 / ISUZU • Ascender 2003-04
OLDSMOBILE • Bravada 2002-04**

Disconnect the negative battery terminal to prevent an accidental short circuit.

1. Remove (4) Phillips screws, (2) from left and (2) from right of carpeted panel below dash forward of center console.
2. Slide carpeted panel down and backwards to reveal (2) Phillips screws and remove.
3. Unsnap radio bezel and unplug cigarette lighter and accessories.
4. Remove (3) 9/32" hex head screws and remove radio.

Continue to kit assembly.

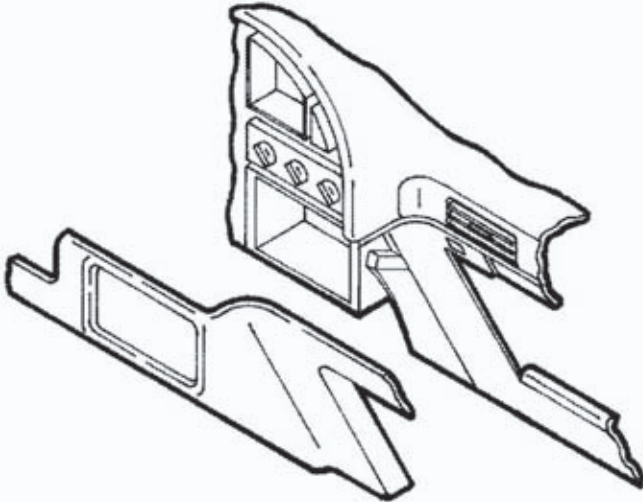


OLDSMOBILE • Achieva 1996-98

Disconnect the negative battery terminal to prevent an accidental short circuit.

1. Open the glove box, press inward on the walls of the glove box liner and remove the liner.
2. Remove (10) torx-head screws from the glove box location.
3. Remove (2) 9/32" hex-head screws under the steering column.
4. Unclip the dash trim bezel.
5. Remove the screws securing the factory head unit and disconnect the wiring.

Continue to kit assembly.

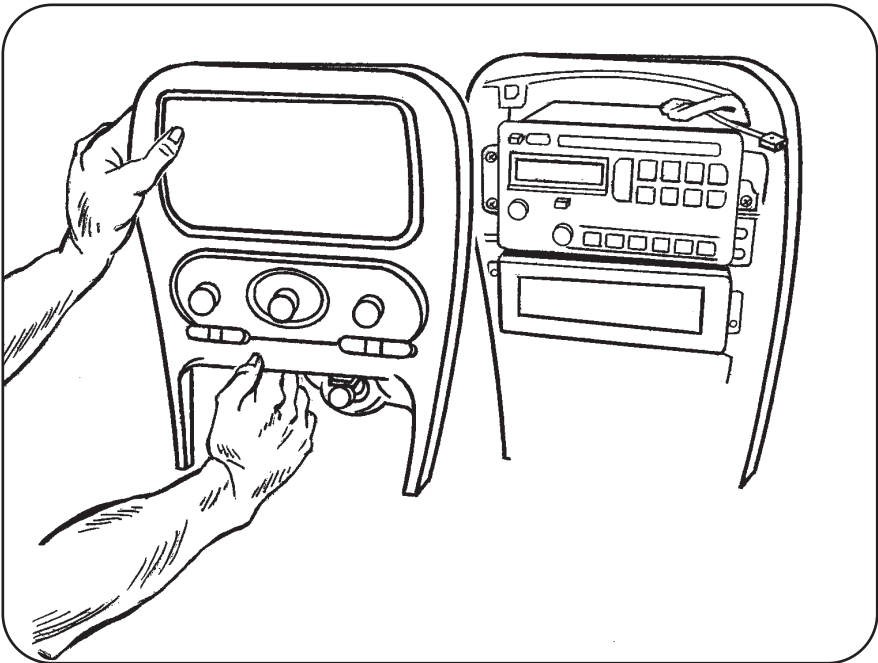


OLDSMOBILE • Alero 1999-04

Disconnect the negative battery terminal to prevent an accidental short circuit.

1. Remove shift knob by using a small screwdriver to remove U-clip from front of shifter and pull upward.
2. Unclip and remove shifter trim panel.
3. Unclip and remove radio and climate control panel by pulling from bottom.
4. Remove (3) 9/32" screws from radio and remove.

Continue to kit assembly.

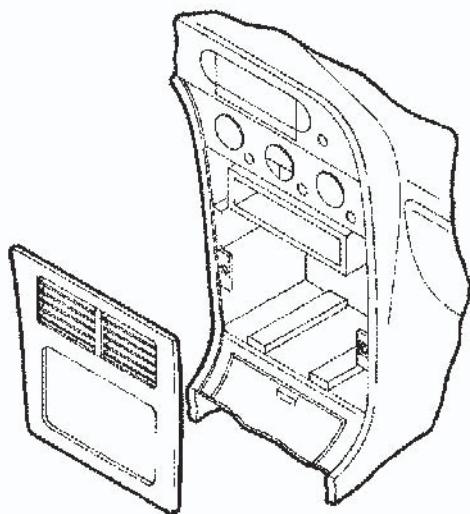


OLDSMOBILE • Aurora 1995-03

Disconnect the negative battery terminal to prevent an accidental short circuit.

1. Unclip the radio trim bezel and remove.
2. Remove (3) 9/32" screws securing the factory head unit and disconnect the wiring.

Continue to kit assembly.

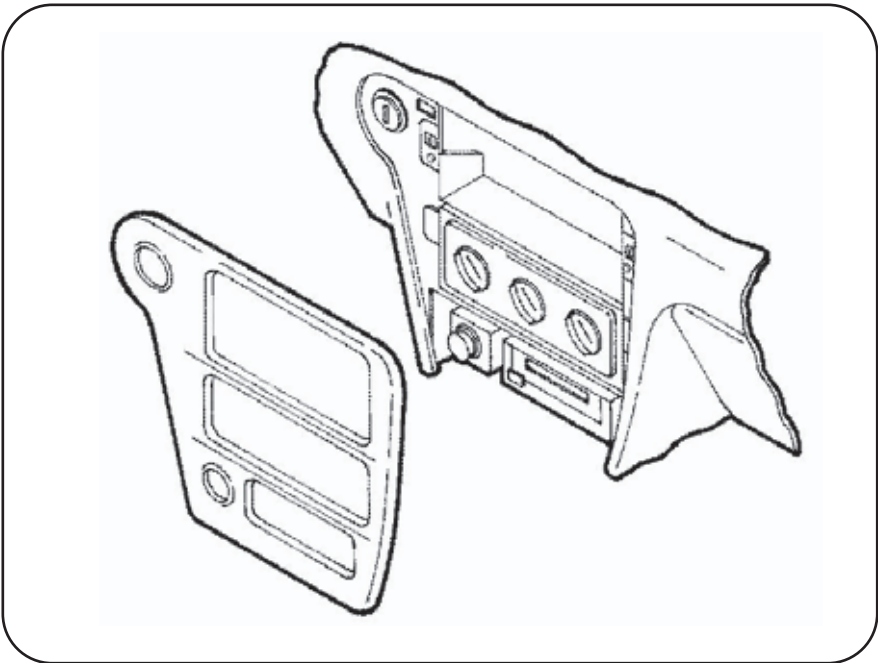


OLDSMOBILE • Cutlass 1997-99

Disconnect the negative battery terminal to prevent an accidental short circuit.

1. Unclip the radio trim bezel and remove.
2. Remove (3) 7mm hex-head screws securing the factory head unit and disconnect the wiring.

Continue to kit assembly.

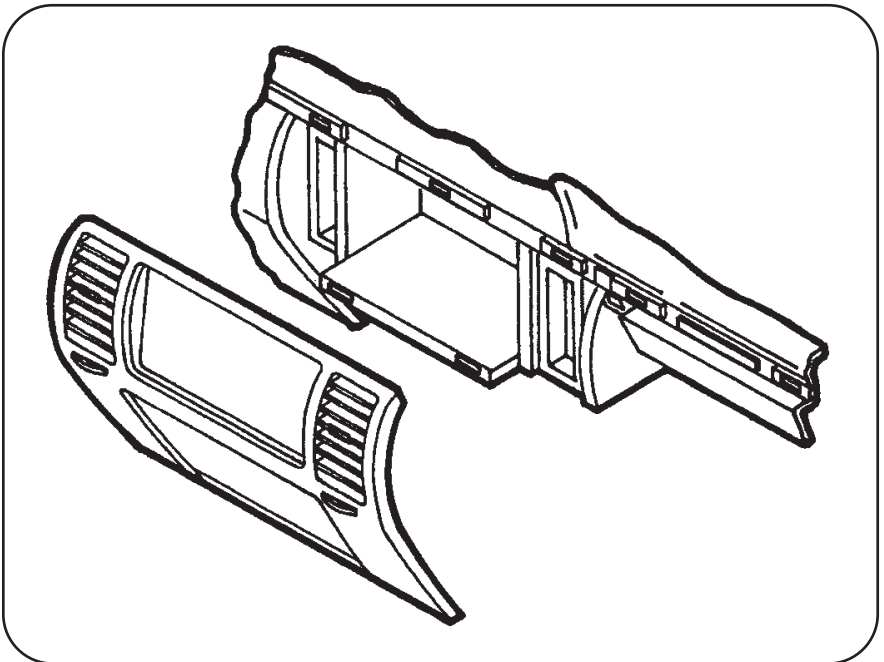


OLDSMOBILE • Eighty Eight 1994-99 / Ninety Eight 1994-96

Disconnect the negative battery terminal to prevent an accidental short circuit.

1. Open the glove box and remove (2) hex-head screws securing the wood trim.
2. Unsnap the wood trim and remove.
3. Remove (2) 9/32" hex-head screws below the radio trim bezel.
4. Lift up on the bezel and remove.
5. Remove (3) 9/32" hex-head screws securing the factory head unit and disconnect the wiring.

Continue to kit assembly.

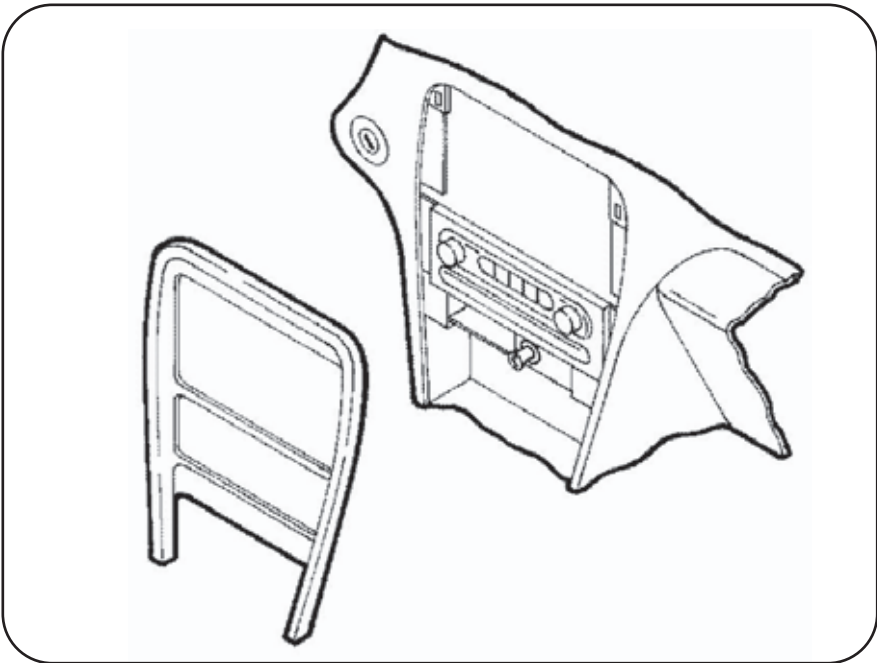


OLDSMOBILE • Intrigue 1998-02

Disconnect the negative battery terminal to prevent an accidental short circuit.

1. Open the center console storage compartment and remove (2) 9/32" hex-head screws exposed.
2. Remove the center console.
3. Unclip the radio trim bezel and remove.
4. Remove (3) 9/32" hex-head screws securing the factory head unit and disconnect the wiring.

Continue to kit assembly.

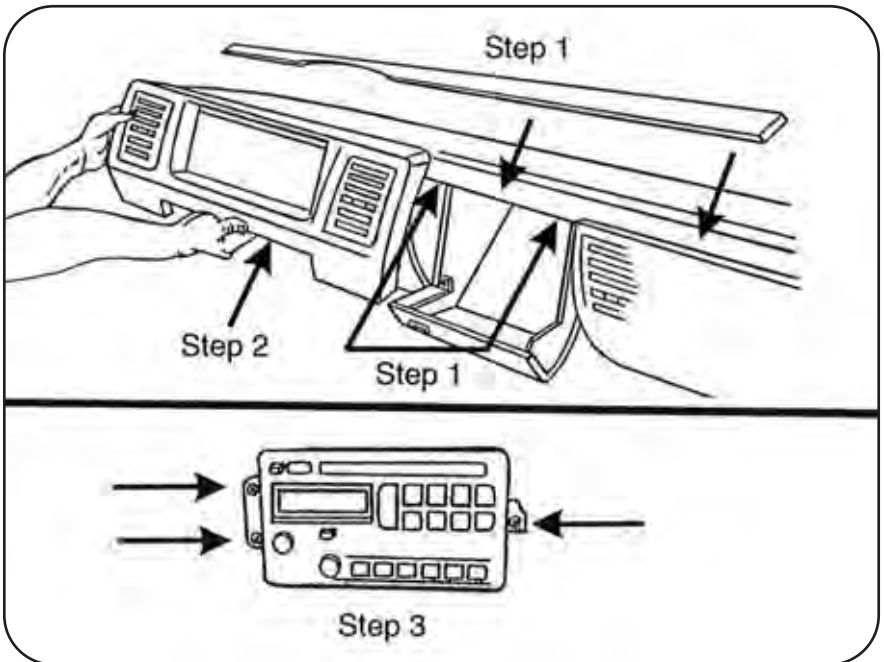


OLDSMOBILE • LSS 1996-99 / Regency 1997-98

Disconnect the negative battery terminal to prevent an accidental short circuit.

1. Open glove box and remove two-center trim bezels attached by screws.
2. Unsnap and remove radio trim bezel.
3. Remove (3) 9/32" hex-head screws and remove radio.

Continue to kit assembly.

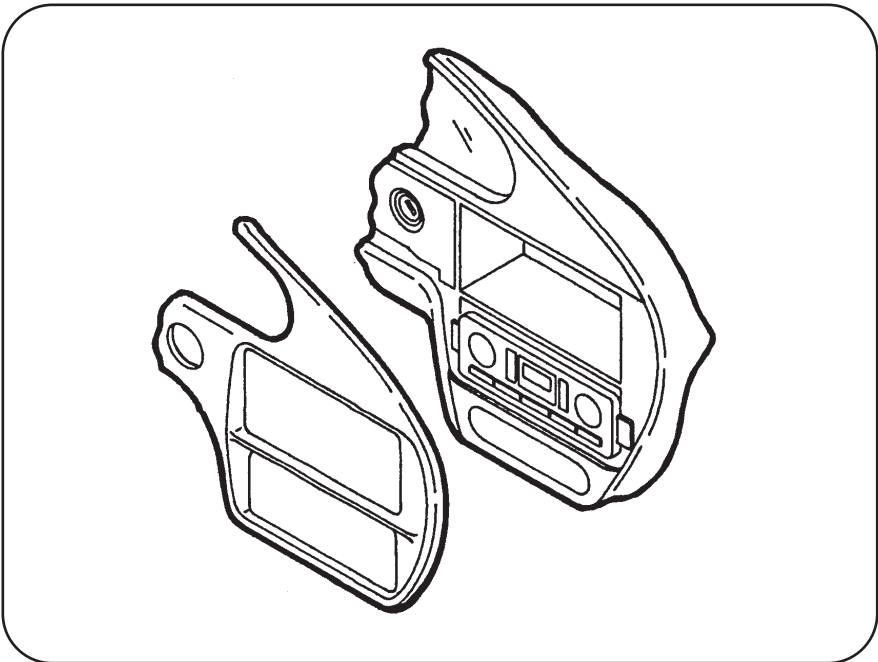


PONTIAC • Aztec 2001-04

Disconnect the negative battery terminal to prevent an accidental short circuit.

1. Pull out cup holder inserts.
2. Remove (1) Phillips screw exposed inside bottom cup holder.
3. Unsnap and remove shifter trim with cup holders.
4. Remove (2) #15 torx at bottom of radio / climate bezel.

Continue to kit assembly.

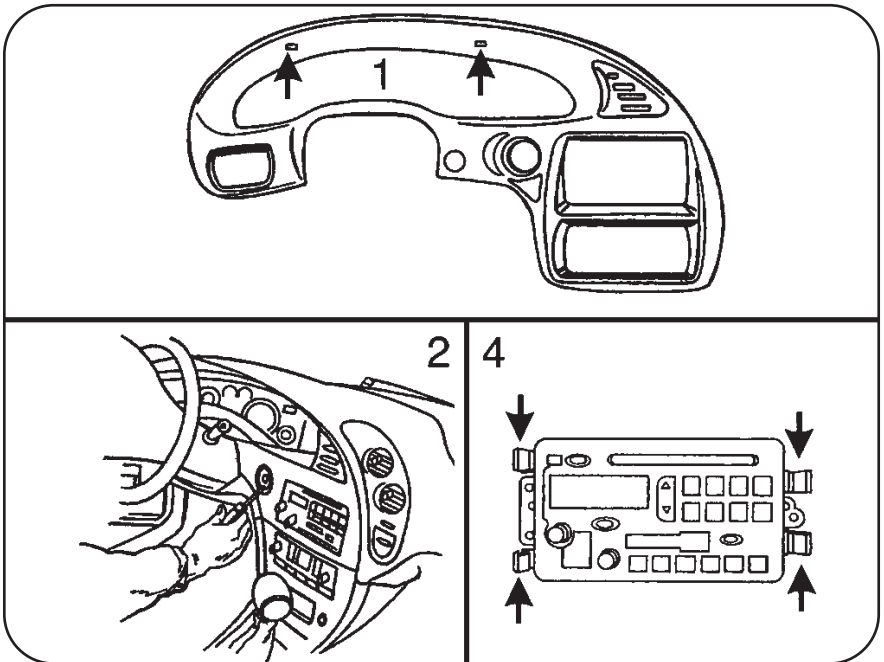


PONTIAC • Bonneville 2000-04

Disconnect the negative battery terminal to prevent an accidental short circuit.

1. Remove (2) Phillips screws from the instrument cluster.
2. Unclip the ignition trim and remove.
3. Unclip the climate control / radio trim panel and remove.
4. Depress the spring clips on each side of the factory head unit and remove.

Continue to kit assembly.

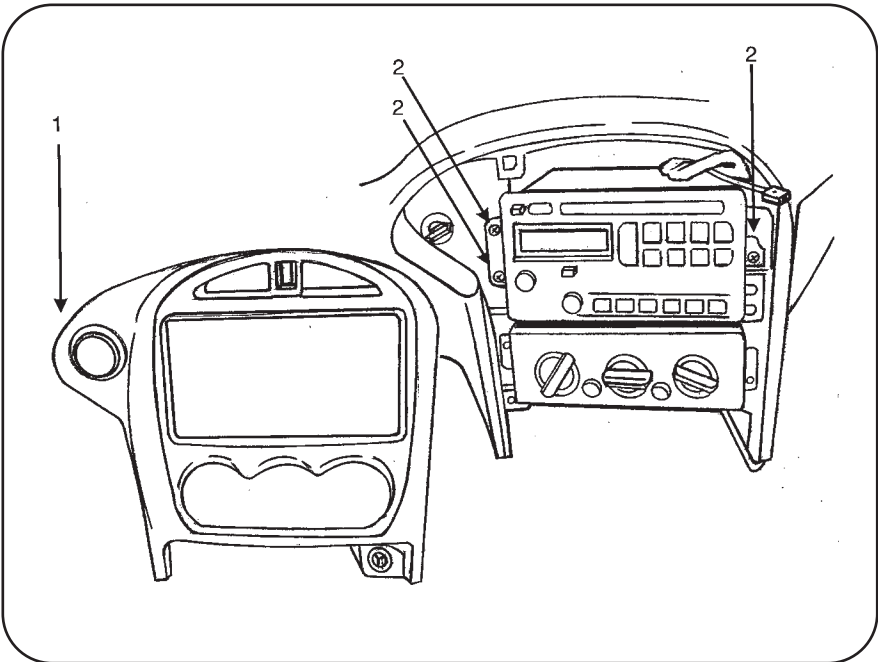


PONTIAC • Grand Am 2001-04

Disconnect the negative battery terminal to prevent an accidental short circuit.

1. Unsnap and remove radio trim bezel.
2. Remove (3) 9/32" screws from radio brackets and remove radio.

Continue to kit assembly.

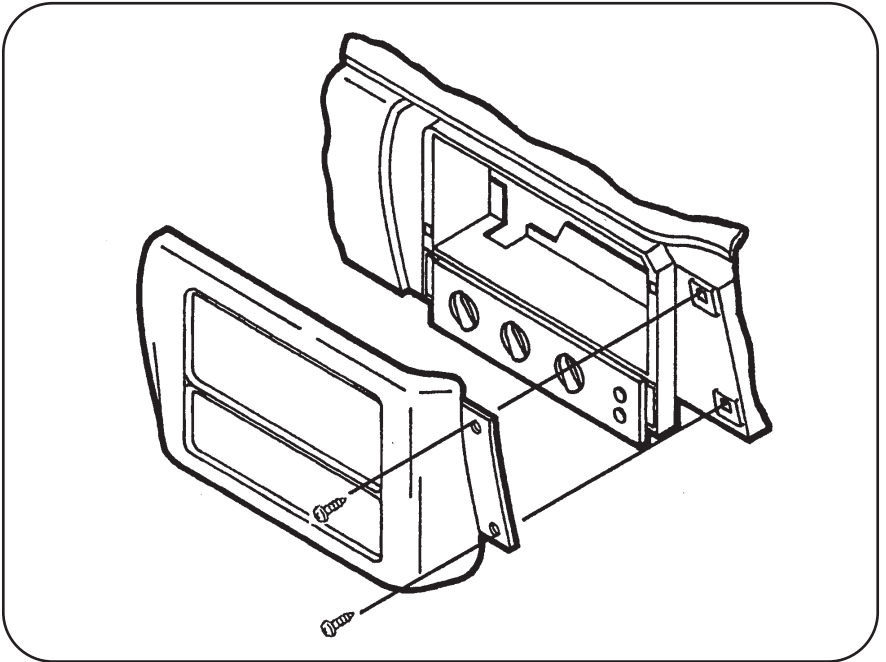


PONTIAC • Sunfire 2000-04

Disconnect the negative battery terminal to prevent an accidental short circuit.

1. Open the glove box and remove (2) Phillips screws exposed on the right edge of the radio trim bezel.
2. Unclip the bezel and remove.
3. Remove (3) 9/32" hex-head screws securing the factory head unit and disconnect the wiring.

Continue to kit assembly.



**CHEVROLET • Colorado 2004-2005 /
GMC • Canyon 2004-2005**

Disconnect the negative battery terminal to prevent an accidental short circuit.

1. Unsnap and remove the entire panel surrounding the radio and A/C controls.

(Figure A)

2. Remove (3) 9/32" screws securing the radio to remove. **(Figure B)**
Continue to kit assembly.

Figure A

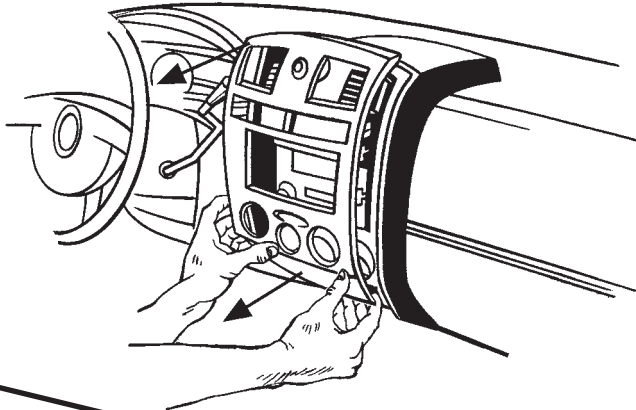
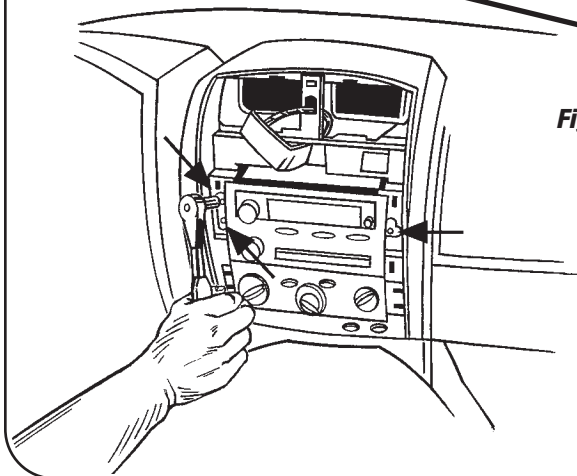


Figure B

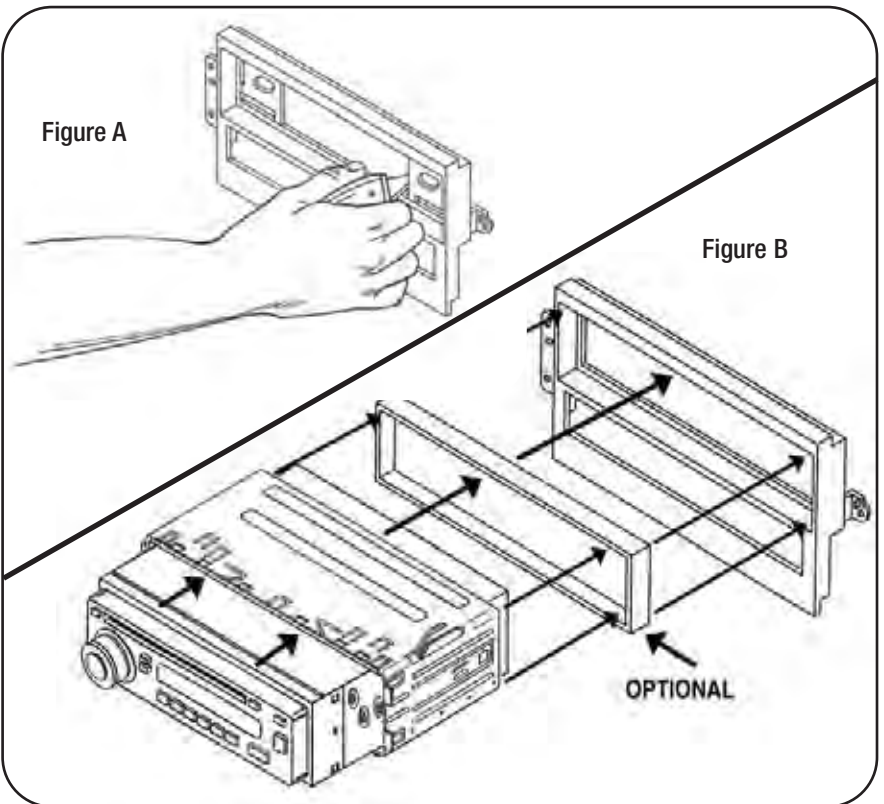


ALL VEHICLES - DIN HEAD UNIT PROVISIONS

Disconnect the negative battery terminal to prevent an accidental short circuit.

1. Slide DIN cage into the Radio Housing and secure by bending metal locking tabs outward. (See Figure B)
2. Slide radio into DIN cage. (See Figure B)

Note: When installing a DIN head unit you will need to cut and remove the shaft supports in the radio housing. (See Figure A)

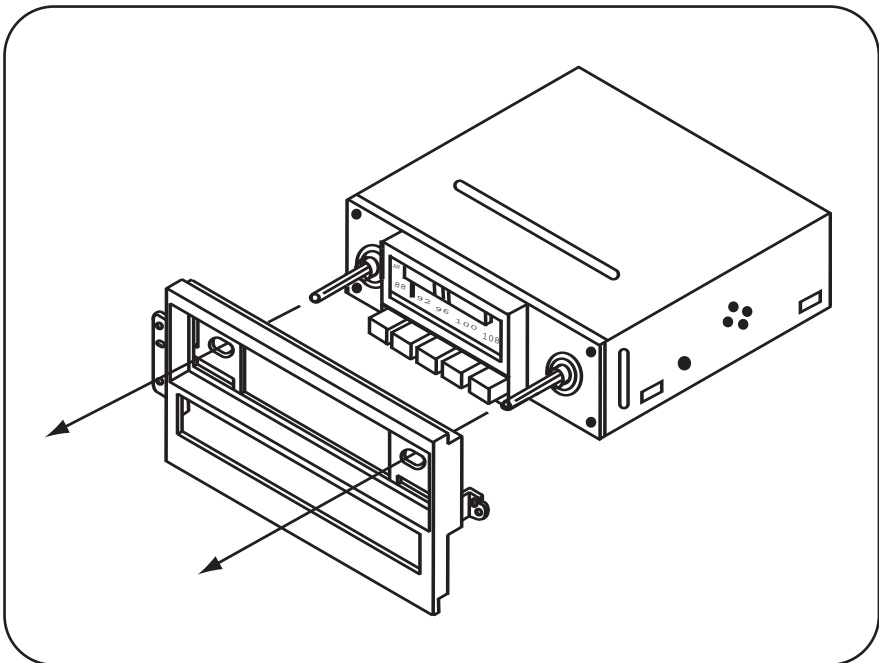


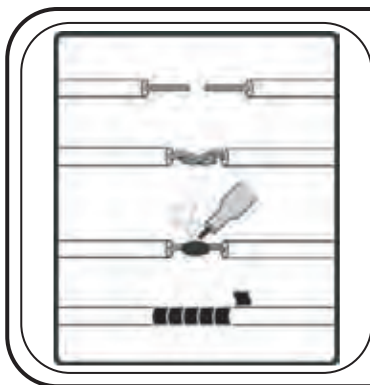
ALL VEHICLES - SHAFT HEAD UNIT PROVISIONS

Disconnect the negative battery terminal to prevent an accidental short circuit.

1. Slide the aftermarket head unit into the kit from the back and secure with the shaft nuts provided with the new head unit.

Note: If an equalizer will be included slide the unit into the back of the radio housing and secure. If an equalizer will NOT be included, snap the Equalizer Dummy Plate into the opening in the radio housing



ALL VEHICLES

- A) Strip wire ends back 1/2"
- B) Twist ends together
- C) Solder
- D) Tape

1. Locate the factory wiring harness in the dash. Metra recommends using the proper mating adapter and making connections as shown. (Isolate and individually tape off the ends of any unused wires to prevent electrical short circuit.) See figure A
2. Re-connect the battery terminal and test the unit for proper operation.
3. Reassemble dash in the reverse order of your specific vehicle's Dash Disassembly.



99-2001



1-800-221-0932



www.metraonline.com

© COPYRIGHT 2004-2007 METRA ELECTRONICS CORPORATION Rev. 10-11-07