



INSTALLATION INSTRUCTIONS FOR PART 99-2003

APPLICATIONS

GM/SUZUKI MULTI KIT

99-2003

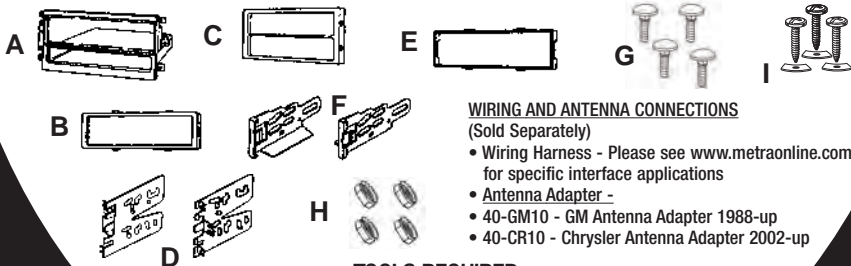
KIT FEATURES

- DIN Head Unit Provisions with Pocket
- ISO DIN Head Unit Provisions with Pocket
- Double DIN head unit provision
- Stacked ISO head unit provision



KIT COMPONENTS

- A) Radio Housing w/ Pocket • B) ISO Trim Plate • C) DDIN Trimplate • D) DDIN Stacked ISO Brackets
E) DIN Spacer • F) ISO Snap In Brackets • G) Carriage Bolts • H) Kep Nuts • I) (3) Screws/(3) Speed Clips



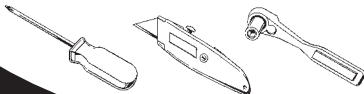
WIRING AND ANTENNA CONNECTIONS

(Sold Separately)

- Wiring Harness - Please see www.metraonline.com for specific interface applications
- Antenna Adapter -
- 40-GM10 - GM Antenna Adapter 1988-up
- 40-CR10 - Chrysler Antenna Adapter 2002-up

TOOLS REQUIRED:

- Phillips Screwdriver • Utility Knife • Socket Wrench



1-800-221-0932



www.metraonline.com

BUICK

Century	1997-2005	3
Le Sabre	1995-2005	4,5
Park Avenue	1995-2005	4,5
Regal	1995-2004	3
Rendezvous	2002-2005	6
Riviera	1996-1999	7
Roadmaster	1995-1996	8
Skyline	1996-1998	9

CADILLAC

Escalade/EXT	2003-2005	10
Fleetwood/ Brougham	1990-1996	11-13

CHEVROLET / GEO

Avalanche	2003-2005	10
Blazer	2002-2005	14
Cavalier	2000-2005	15
Express Van	2001-2004	16,17
Colorado	2004-2009	43
Impala	2000-2005	18
Malibu	2001-2003	19
Malibu Classic	2004	19
Metro	1995-2001	20
Monte Carlo	2000-2005	21
SSR	2003-2006	22
S-10	2002-2004	14
Silverado	2003-2005	10
Suburban	2003-2005	10
Tahoe	2003-2005	10
Tracker	1992-2004	23
Trailblazer	2002-2009	24
Venture	2000-2005	25,26

GMC

Canyon	2004-2009	44
Envoy	2002-2009	29
Savanna	2001-2005	16,17
Sierra	2003-2005	10

HUMMER

H2	2003-2005	27,28
----	-----------	-------

ISUZU

Ascender	2003-2008	29
----------	-----------	----

OLDSMOBILE

Achieva	1996-1998	30
Alero	1999-2004	31
Aurora	1995-2003	32
Bravada	1998-01	14
Bravada	2002-04	29
Cutlass	1997-1999	33
Cutlass Supreme	1995-1997	33
Eighty-Eight	1994-1999	34
Intrigue	1998-2002	35
LSS	1996-1999	36
Ninety-Eight	1994-1996	34
Regency	1997-1998	36
Silhouette	2000-2004	25,26

PONTIAC

Aztec	2001-2008	37
Bonneville	2000-2005	38
Grand Am	2001-2005	39
Montana	2000-2004	25,26
Sunfire	2000-2005	40

SUZUKI

Aerio	2002	41
Esteem	1995-2003	42
Sidekick	1992-1998	23
Swift	1995-2001	20
Vitara	1999-2005	23

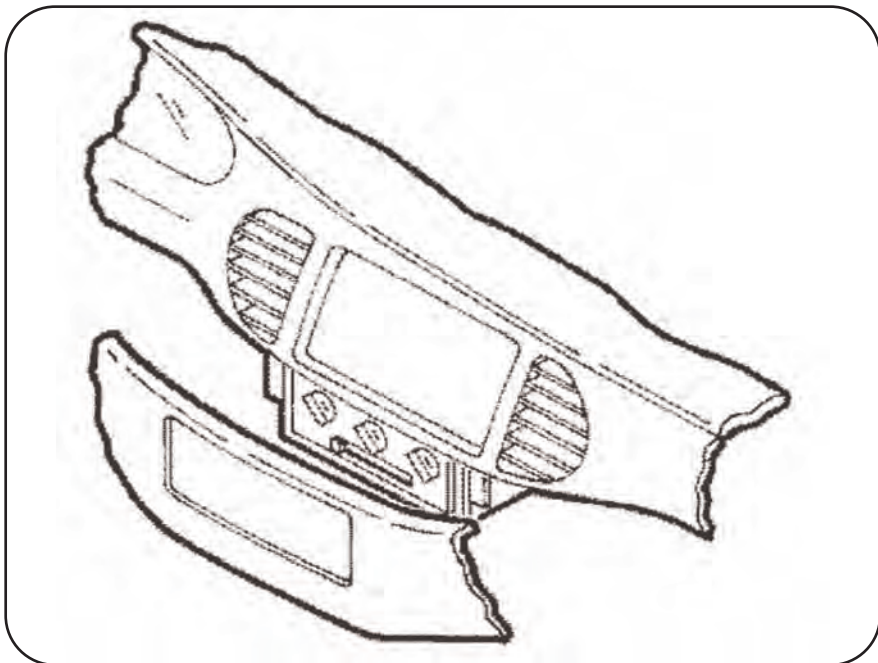
ALL VEHICLES

Notes	51,52
Tab Instructions	45
Kit Assembly	46-49
Final Assembly	50

BUICK • Century 1997-04 / Regal 1997 - 04

Disconnect the negative battery terminal to prevent an accidental short circuit.

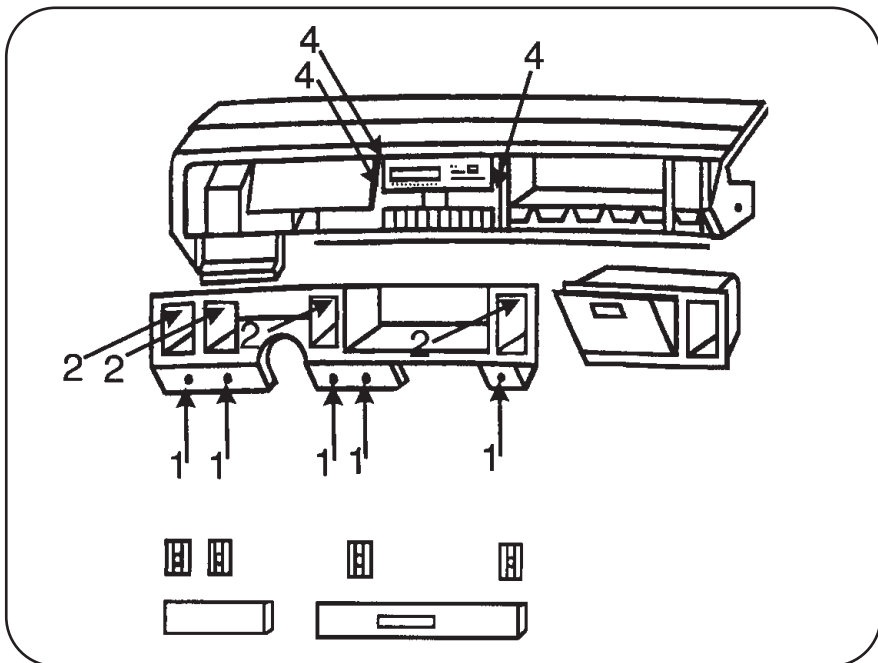
1. Open both doors and remove end caps from both ends of dashboard.
2. Open glove box, then remove (1) 9/32" screw from panel above passenger kick panel and remove.
3. Remove 9/32" screws from bottom left and right of ashtray assembly and unclip and remove.
4. Unclip top edge of panel below steering column and let hang.
5. Remove (1) 9/32" screw from right side of instrument cluster and radio trimpanel and remove entire panel from right to left.
6. Remove (3) 9/32" screws to remove radio.
7. See page 44 for all vehicle tab instructions.



BUICK • LeSabre 1995-99 / Park Avenue 1995-99

Disconnect the negative battery terminal to prevent an accidental short circuit.

1. Unsnap the climate control trim panel (from door to door) and remove (5) 9/32" screws exposed.
2. Pop out the a/c vents and remove (1) Phillips screw exposed in each vent cavity.
3. Unclip the radio trim bezel and remove.
4. Remove the screws securing the factory head unit and disconnect the wiring.
5. See page 44 for all vehicle tab instructions.

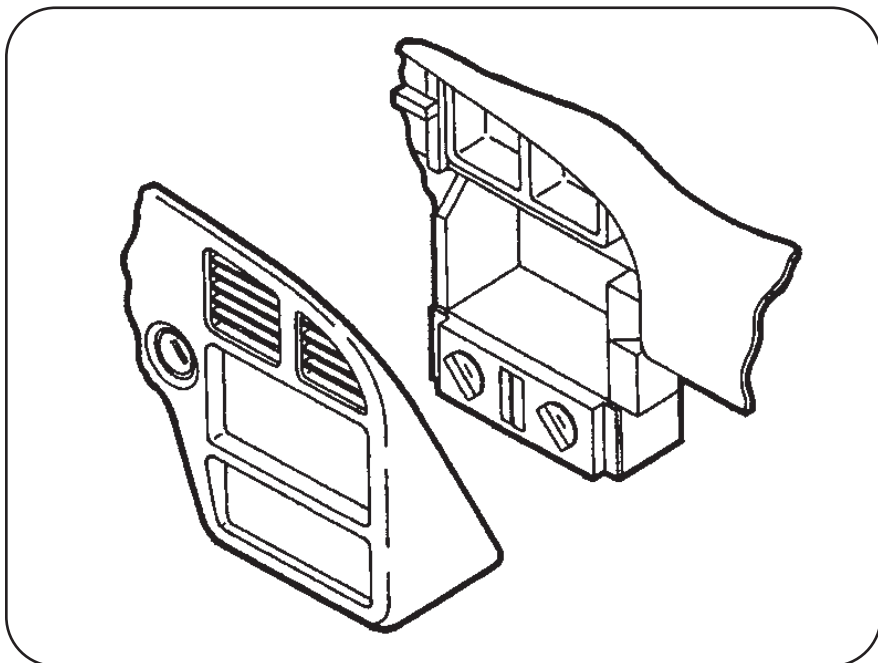


BUICK • LeSabre 2000-04 / Park Avenue 2000-04

Disconnect the negative battery terminal to prevent an accidental short circuit.

1. Open drivers door and unsnap and remove dash end cap.
2. Remove (2) Phillips screws from underneath steering column cover.
3. Unsnap and remove steering column cover.
4. Unsnap and remove instrument panel.
5. Remove (2) 9/32" screws and remove radio.
6. See page 44 for all vehicle tab instructions.

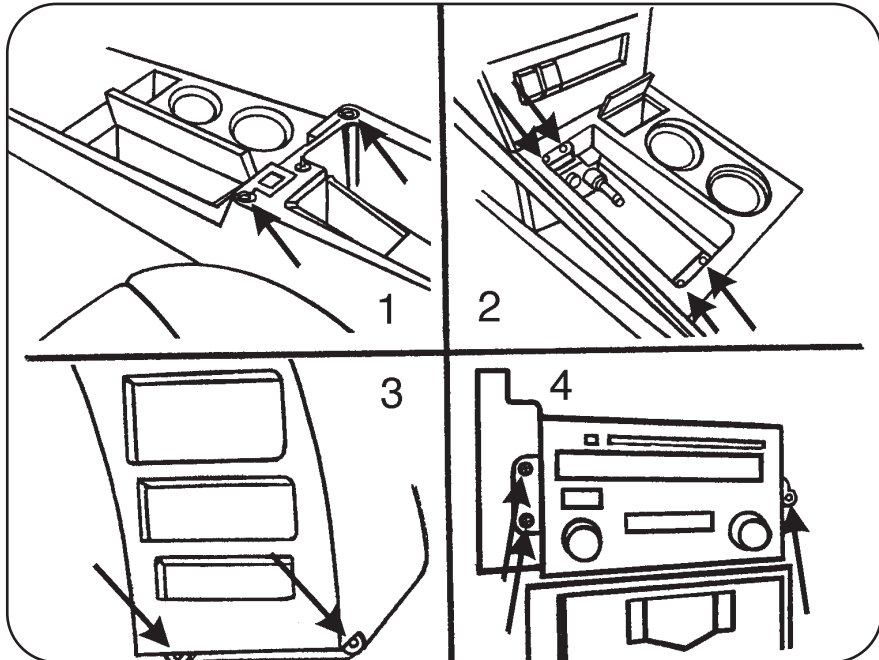
NOTE: For the Buick Le Sabre, Oldsmobile Aurora and the Pontiac Bonneville the (3) speed clips and screws provided with the kit will need to be installed into the sub dash where the screw holes line up on the kit.



BUICK • Rendezvous 2002-2005

Disconnect the negative battery terminal to prevent an accidental short circuit.

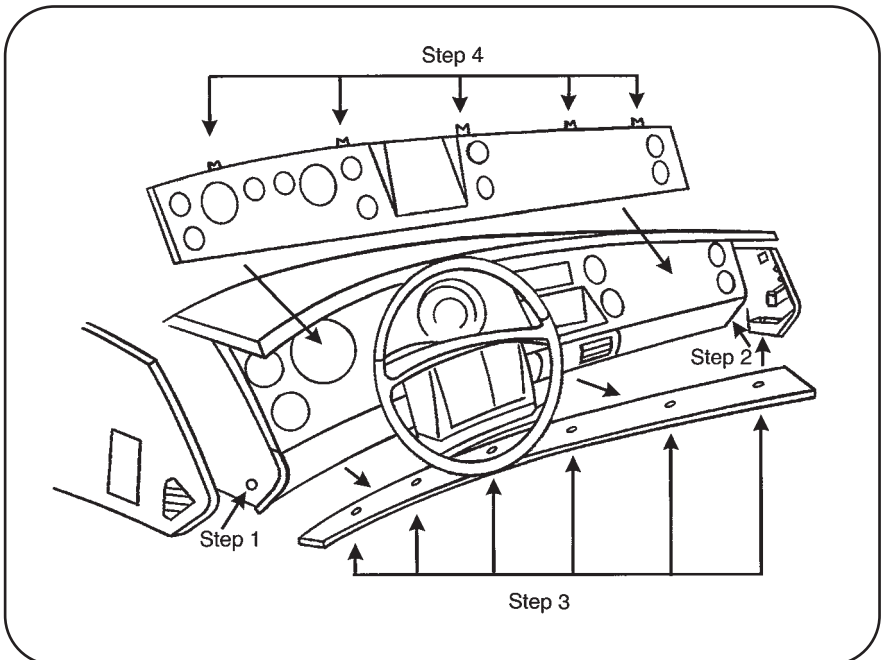
1. Open center console and remove (2) Torx T-15 screws at front of console opening.
2. Remove liners from cup holders and storage pocket next to cup holders, then remove (4) Torx T-15 screws. Unsnap and remove panel.
3. Remove (2) 7mm hex head screws from bottom of driver side dash panel and remove.
4. Unclip dash panel and remove.
5. Remove (3) 9/32" hex head screws to remove radio.
6. See page 44 for all vehicle tab instructions.



BUICK • Riviera 1996-1999

Disconnect the negative battery terminal to prevent an accidental short circuit.

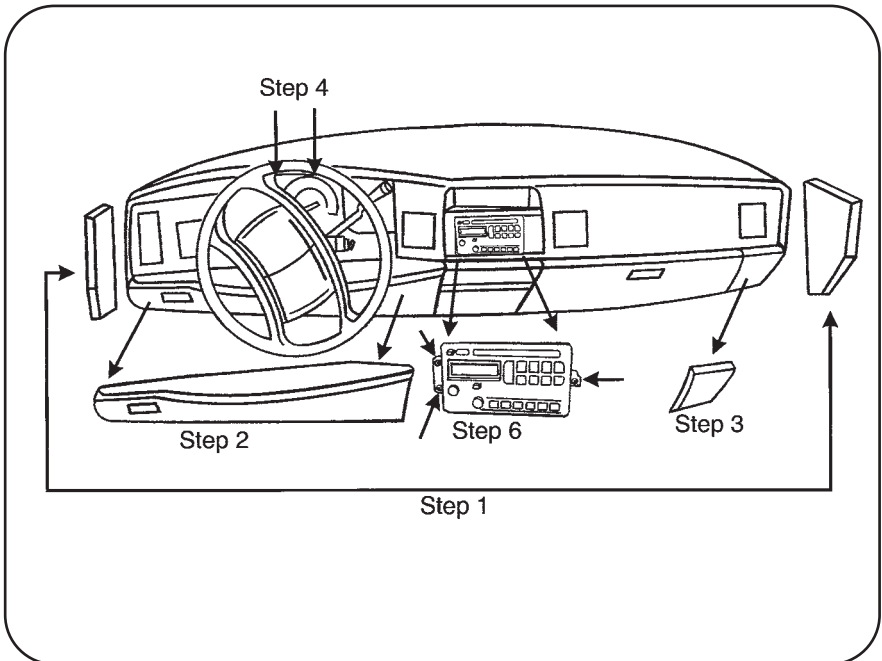
1. Unsnap left side panel exposing (1) Phillips screw to remove.
2. Remove (1) Phillips screw and unsnap right side panel to expose (1) Phillips screw beneath panel and remove.
3. Unsnap underside of overhanging dash to unsnap (6) plastic rivets and remove panel.
4. Remove (5) hex head screws now exposed under overhang.
5. Unsnap bottom edge of trim bezel, then while holding overhang up, unsnap and remove trim bezel by removing any necessary harnesses.
6. Remove (3) Phillips screw to remove climate control.
7. Remove (2) Phillips screws to remove rear support and (3) 9/32" hex head screws to remove radio.
8. See page 44 for all vehicle tab instructions.



BUICK · Roadmaster 1995-1996

Disconnect the negative battery terminal to prevent an accidental short circuit.

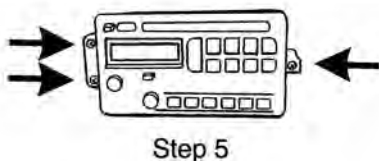
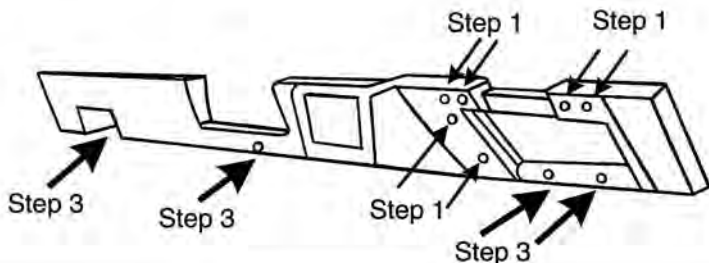
1. Unclip dash panel sides and remove.
2. Unclip panel below steering column and remove.
3. Unclip panel next to glove box on passenger side and remove.
4. Remove (2) 7mm screws above instrument cluster.
5. Set parking brake, turn car on, and move shifter to the lowest gear. Tilt steering wheel down then unsnap entire instrument cluster/radio panel and remove.
6. Remove (3) 7mm screws to remove radio.
7. See page 44 for all vehicle tab instructions.



BUICK • Skylark 1996-1998

Disconnect the negative battery terminal to prevent an accidental short circuit.

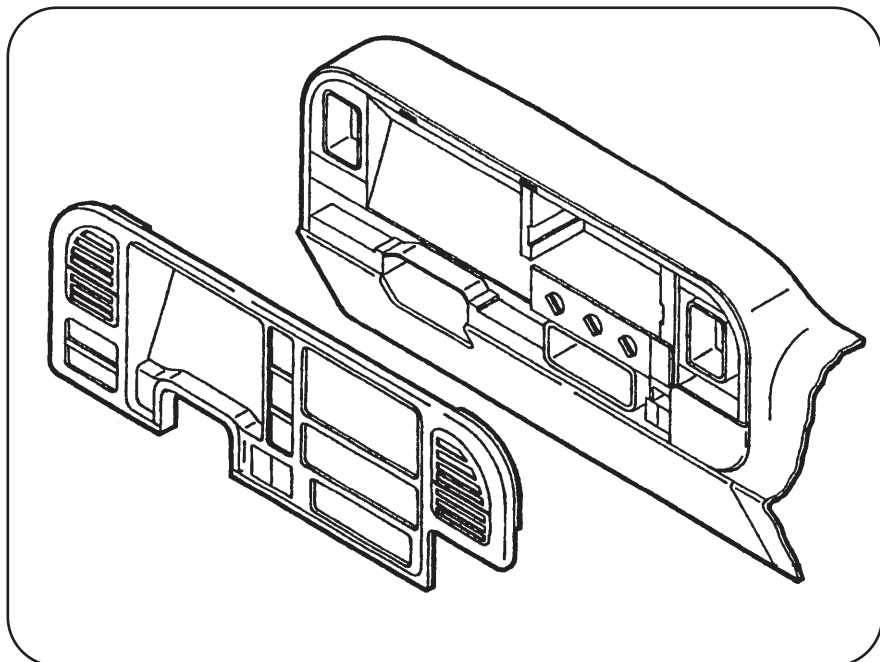
1. Remove (6) 9/32" screws inside glove box.
2. Under glove box and drivers knee bolster, remove (2) plastic panels by turning (2) 1/4 turn fasteners per side.
3. Remove (4) 9/32" screws revealed. (2 per side).
4. Unsnap panel from driver's side to passenger's side.
5. Remove (3) 9/32" screws to remove radio.
6. See page 44 for all vehicle tab instructions.



CADILLAC • Escalade 2003-2004
CHEVROLET • Avalanche 2003-2004
Silverado 2003-04 / Suburban 2003-2004
Tahoe 2003-2004
GMC • Sierra 2003-2004
Yukon / Denali / XL 2003-2004

Disconnect the negative battery terminal to prevent an accidental short circuit.

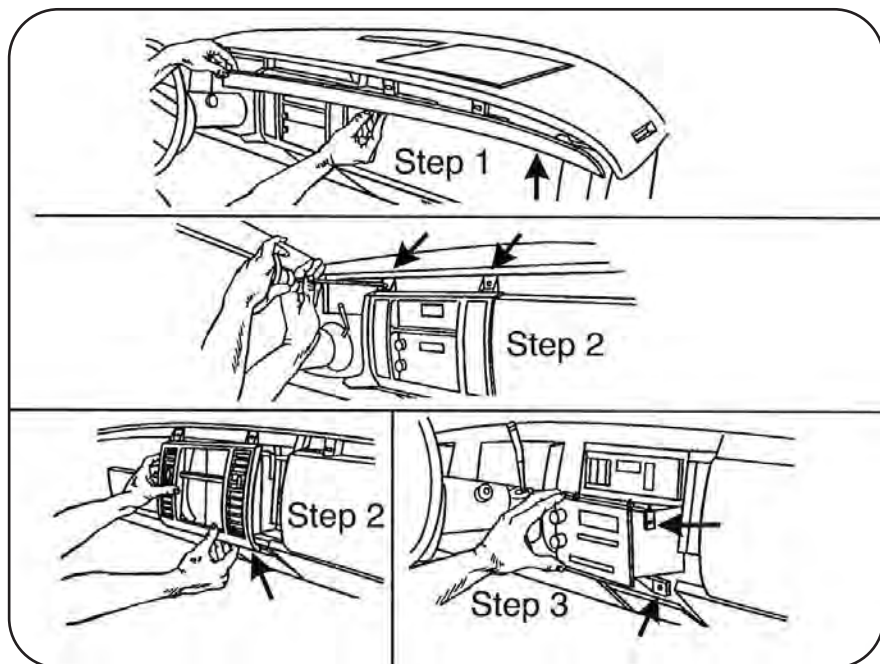
1. Unsnap and remove dash bezel.
2. Remove (3) 9/32" screws and remove radio.
3. See page 44 for all vehicle tab instructions.



**CADILLAC • Fleetwood 1990-1996 /
Fleetwood Brougham 1990-1996**

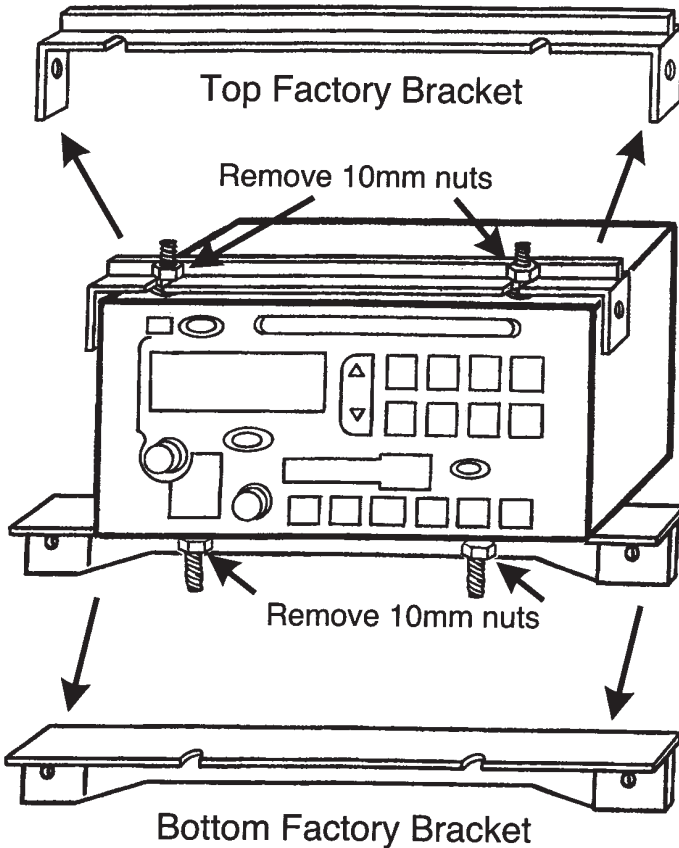
Disconnect the negative battery terminal to prevent an accidental short circuit.

1. Carefully unsnap trim panel above a/c controls.
2. Remove (2) 7mm screws at the top of the radio/air conditioning bezel, then unclip panel and remove.
3. Remove (4) 7mm screws that hold the radio in, slide radio out, unplug the radio harnesses and remove radio.
4. See page 44 for all vehicle tab instructions.



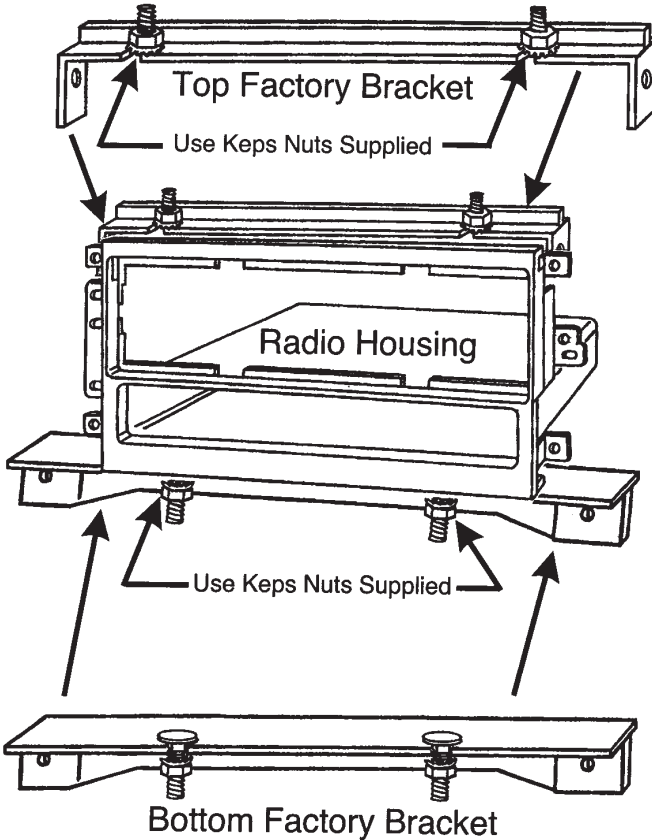
Continued on page 12 and 13.

Cadillac Fleetwood/Brougham Radio Bracket Disassembly



- 1) Remove (4) 10mm nuts, (2) on top of the radio and (2) on the bottom of the radio, that hold the factory mounting brackets on.

Cadillac Fleetwood/Brougham Kit Assembly with Factory Brackets

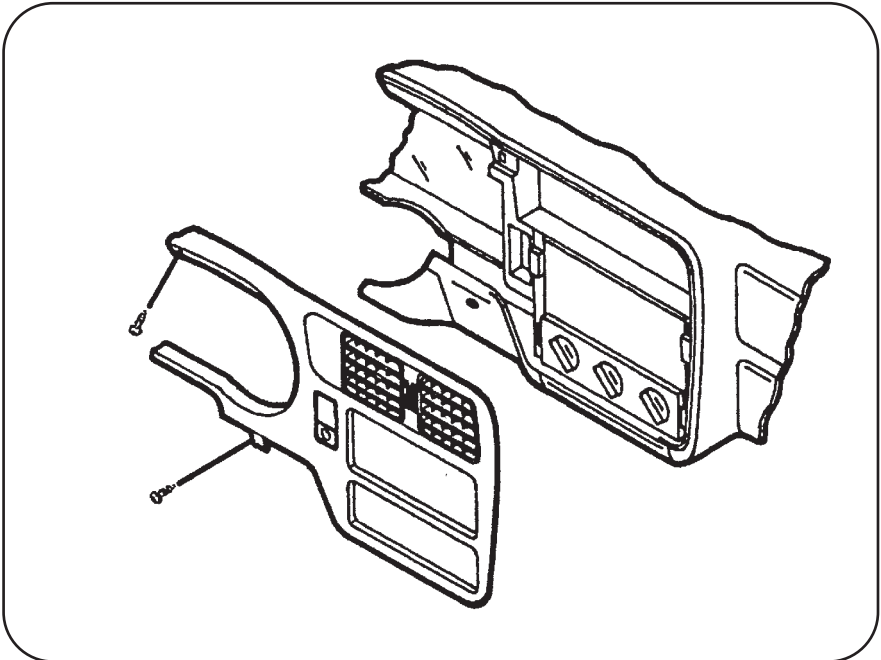


2) Using carriage bolts and Keps nuts supplied, mount the factory brackets to the radio housing with the pocket, keeping in mind which bracket is top and which one is bottom.

CHEVROLET • Blazer 2002-04 / S-10 2002-04
GMC • Sonoma 2000-04
OLDSMOBILE • Bravada 1998-01

Disconnect the negative battery terminal to prevent an accidental short circuit.

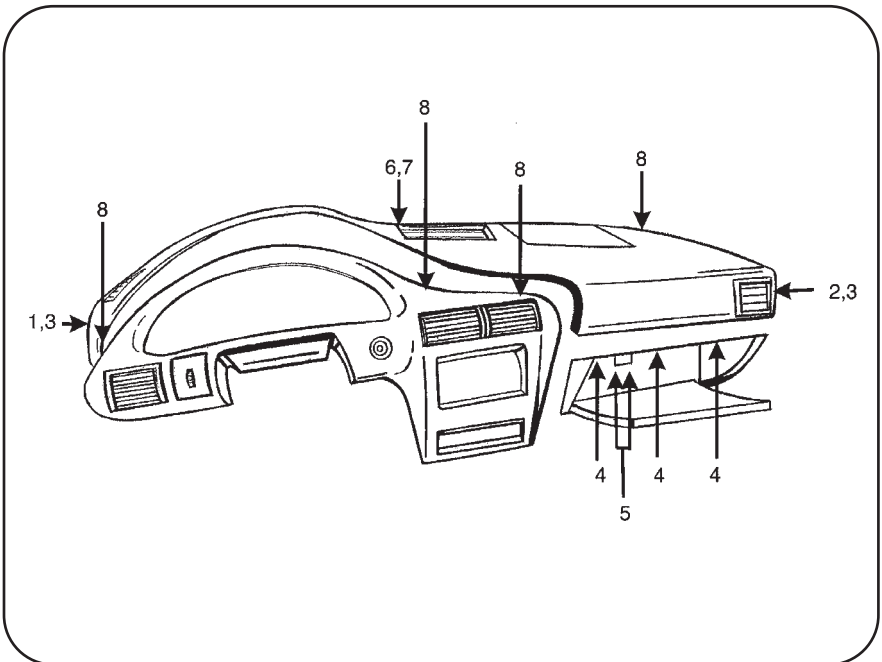
1. Remove (2) 9/32" hex-head screws from the knee bolster.
2. Pull down on the bolster and remove 9/32" screws exposed on the base of the dash trim bezel.
3. Remove (1) Phillips screw above the instrument cluster.
4. Unclip the dash trim bezel and remove.
5. Unclip the dash trim bezel and remove.
6. See page 44 for all vehicle tab instructions.



CHEVROLET • Cavalier 2000-2004

Disconnect the negative battery terminal to prevent an accidental short circuit.

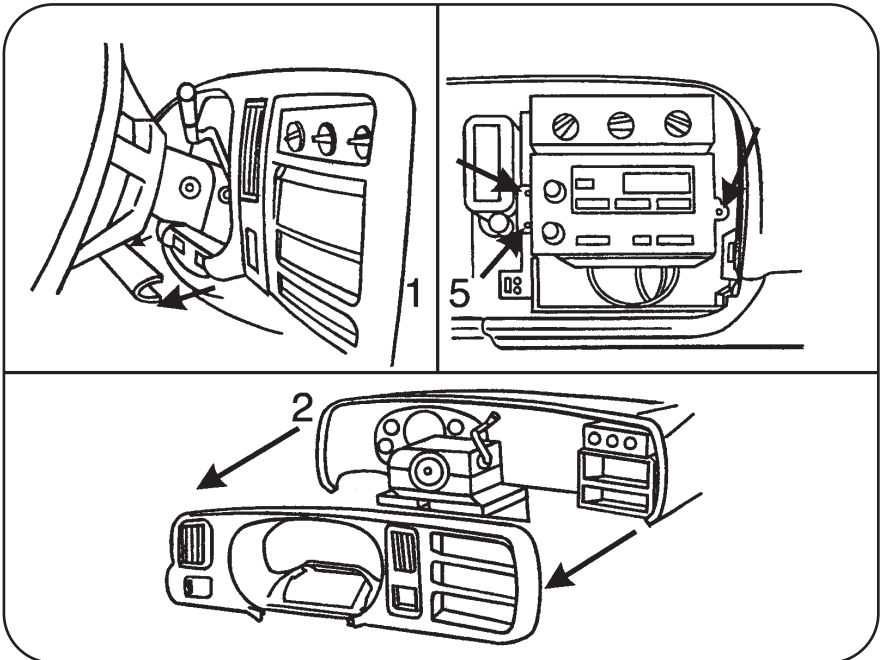
1. Open driver door and remove fuse panel on the end of dash.
2. Open passenger door and remove panel on end of dash.
3. Remove (1) Phillips screw from each side exposed.
4. Remove (3) screws from top of glove box liner.
5. Remove (2) screws from the top-left corner of the glove box cavity.
6. Remove (1) Phillips screw from the defroster duct.
7. Remove the duct work and (1) Phillips screw exposed.
8. Remove the dash pad and (3) Phillips screws exposed at the top of the radio trim bezel.
9. See page 44 for all vehicle tab instructions.



CHEVROLET • Express Van 2001-02 / GMC • Savanna 2001-02

Disconnect the negative battery terminal to prevent an accidental short circuit.

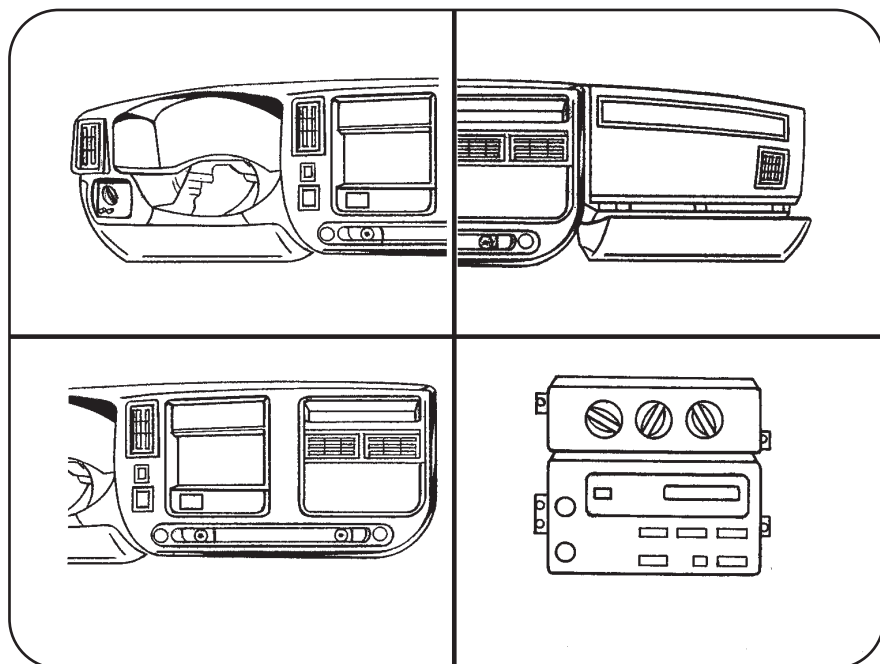
1. Unsnap and remove small trim panel below steering column.
2. Unsnap radio/climate/instrument panel.
3. Move shift lever to first gear position.
4. Rotate panel counterclockwise to lift over steering column and remove.
5. Remove (3) 9/32" hex head screws to remove radio.
6. See page 44 for all vehicle tab instructions.



CHEVROLET • Express Van 2003-04 / GMC • Savanna 2003-04

Disconnect the negative battery terminal to prevent an accidental short circuit.

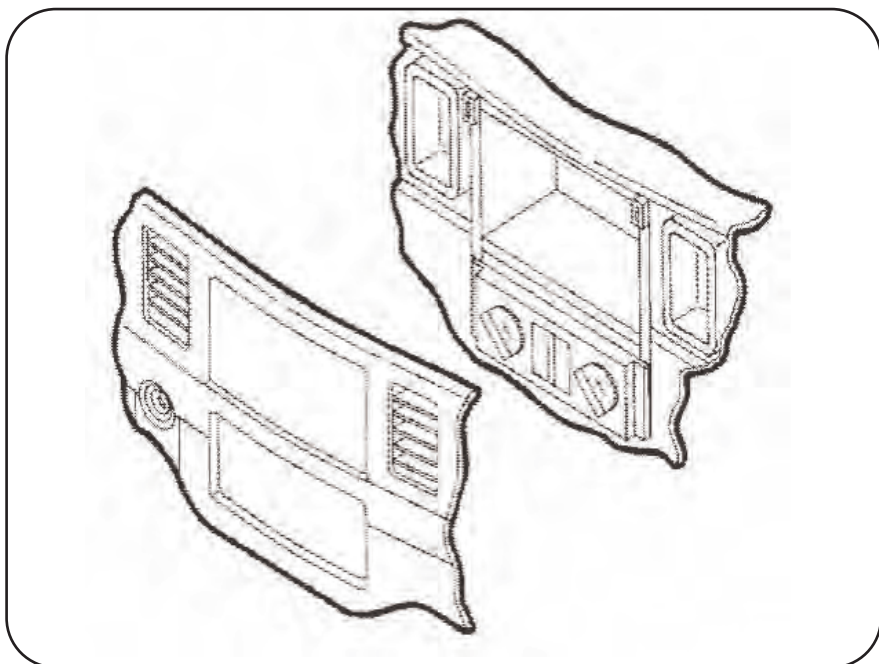
1. Remove (2) 10mm bolts from below knee bolster under steering column and remove panel.
2. Remove (2) 10mm bolts from panel below passenger dash airbag and remove panel.
3. Remove (2) 10mm nuts from inside center pocket between power outlets.
4. Unsnap and remove radio and instrument cluster panel. (May not be necessary to completely remove radio and instrument cluster panel to access radio.)
5. Remove (3) 9/32" bolts to remove radio.
7. See page 44 for all vehicle tab instructions.



CHEVROLET • Impala 2000-2004

Disconnect the negative battery terminal to prevent an accidental short circuit.

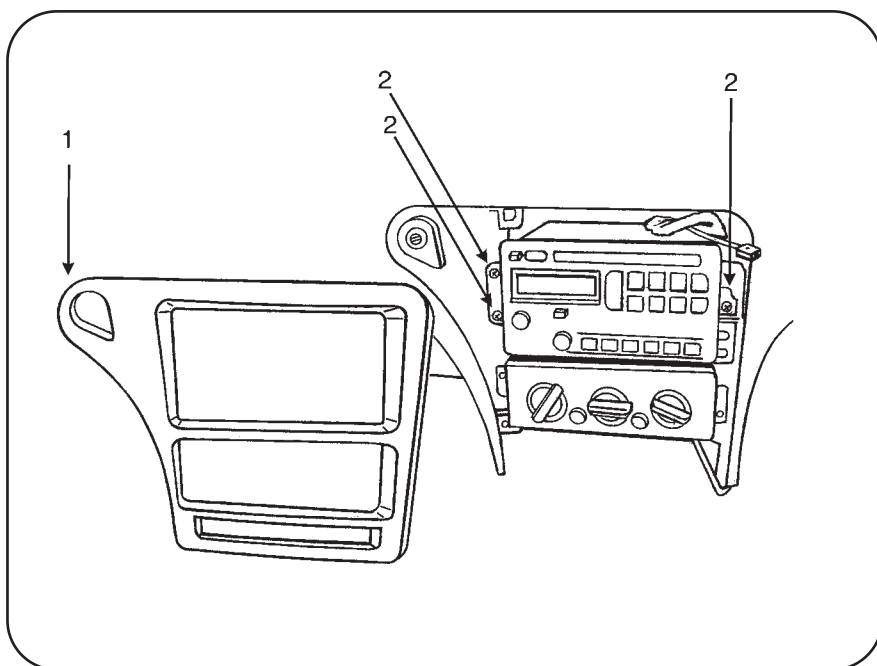
1. Unclip each side of the dash trim bezel (fuse access) and remove (1) Phillips screw exposed on each side.
2. Remove (2) Phillips screws under the instrument cluster.
3. Unclip the trim panel above the pedals. (It is not necessary to remove the panel, it can be left hanging.)
4. Remove (2) Phillips screws from under the knee panel.
5. Unclip the knee panel and remove (1) Phillips screw exposed on the right side of the steering column.
6. Unclip and remove the entire dash trim bezel.
7. See page 44 for all vehicle tab instructions.



CHEVROLET • Malibu 2001-03 / Malibu Classic 2004

Disconnect the negative battery terminal to prevent an accidental short circuit.

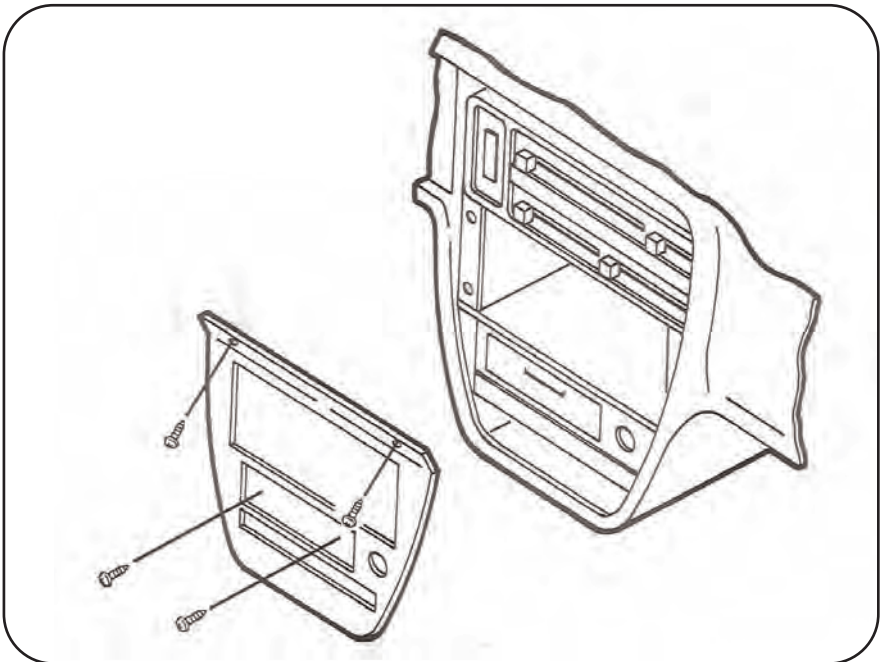
1. Unsnap and remove radio bezel.
2. Remove (3) 9/32" hex head screws and remove radio.
3. See page 44 for all vehicle tab instructions.



CHEVROLET • Metro 1995-01 / SUZUKI • Swift 1995-01

Disconnect the negative battery terminal to prevent an accidental short circuit.

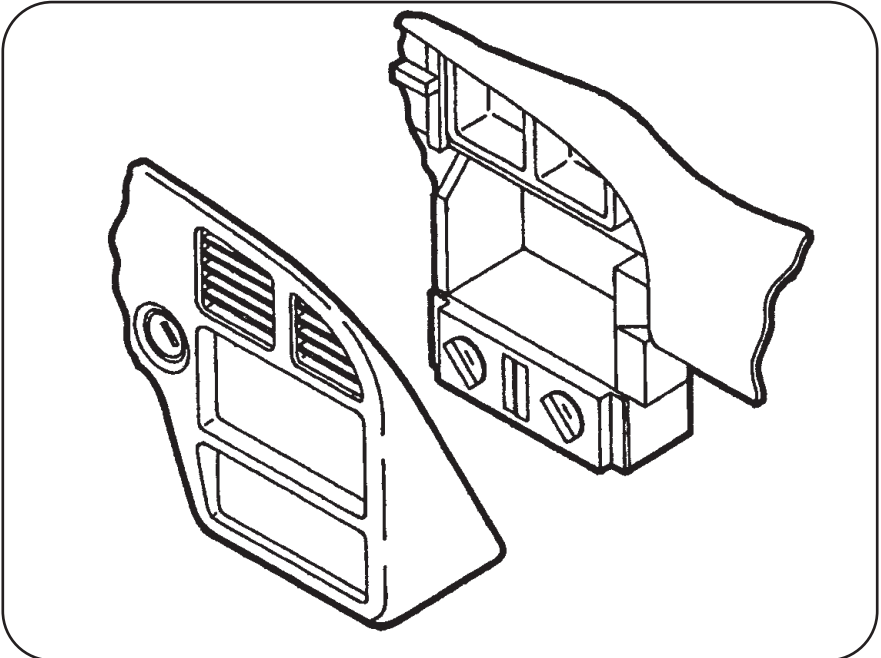
1. Remove the ashtray and (2) Phillips screws exposed
2. Remove (2) Phillips screws above the radio opening.
3. Unclip the radio trim bezel and disconnect the cigarette lighter wiring.
4. Remove (2) screws securing each side of the factory head unit and (1) screw from the rear support.
5. Slide the unit out and disconnect the wiring.
6. See page 44 for all vehicle tab instructions.



CHEVROLET • Monte Carlo 2000-2004

Disconnect the negative battery terminal to prevent an accidental short circuit.

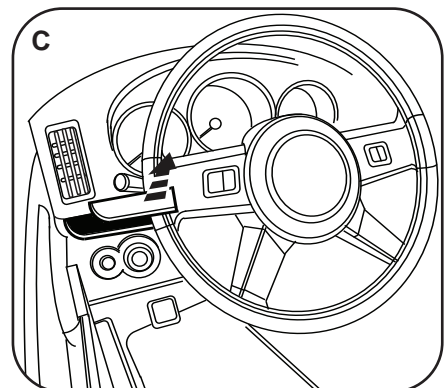
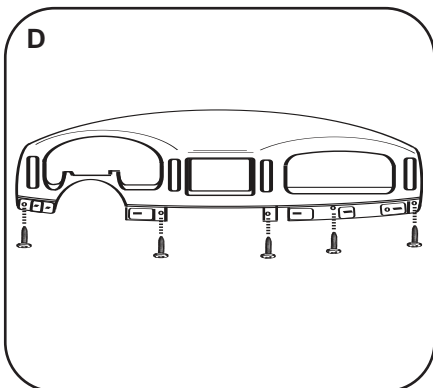
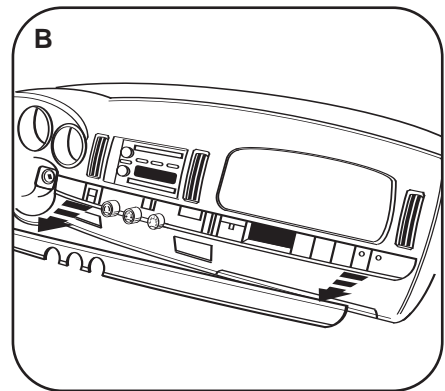
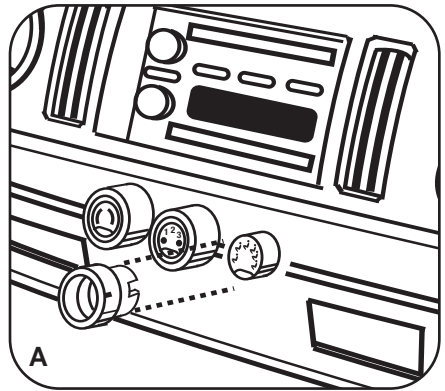
1. Unclip the trim panel above the pedals. (It is not necessary to remove the panel, it can remain hanging.)
2. Remove (2) 9/32" screws from the knee panel and unclip the panel.
3. Unsnap the driver's side fuse panel cover and remove (1) 9/32" screw.
4. Open the glove box and remove (1) 9/32" screw from the upper left corner.
5. Remove (3) 9/32" screws securing the factory radio and disconnect the wiring.
6. See page 44 for all vehicle tab instructions.



CHEVROLET • SSR 2003-2006

- 1** Disconnect the negative battery terminal to prevent an accidental short circuit.
- 2** Unclip and remove the (3) climate control knobs. (Figure A)
- 3** Unclip and remove the long trim panel below the radio and passenger air bag. (Figure B)
- 4** Unclip and remove the small trim panel to the left of the steering wheel. (Figure C)
- 5** Remove the (5) 9/32" screws securing the radio/instrument panel then unclip and remove the panel. (Figure D)
- 6** Remove the screws securing the factory head unit and disconnect the wiring.

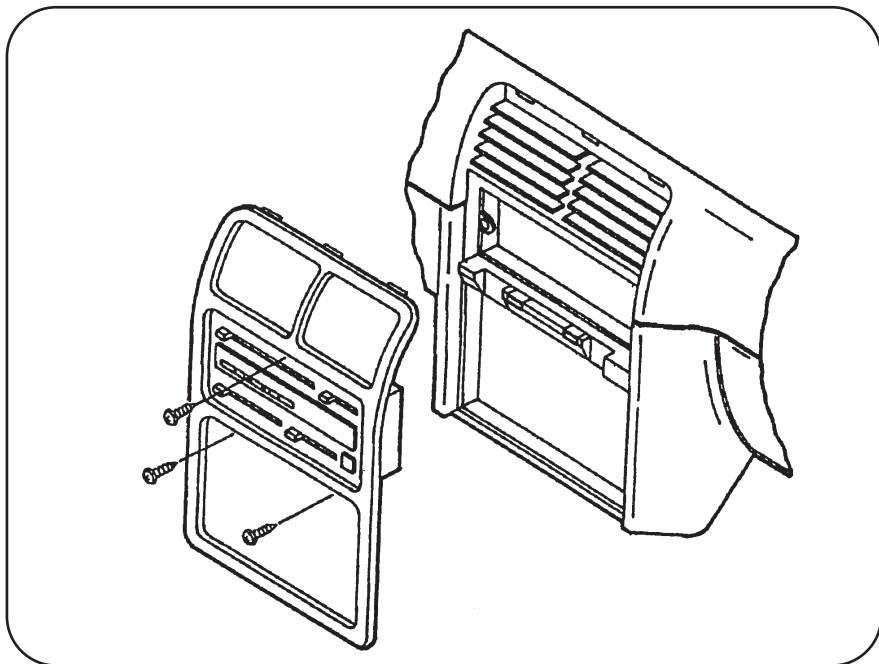
Continue to kit assembly.



CHEVROLET • Tracker 1992-04
SUZUKI • Sidekick 1992-98 / Vitara 1999-04

Disconnect the negative battery terminal to prevent an accidental short circuit.

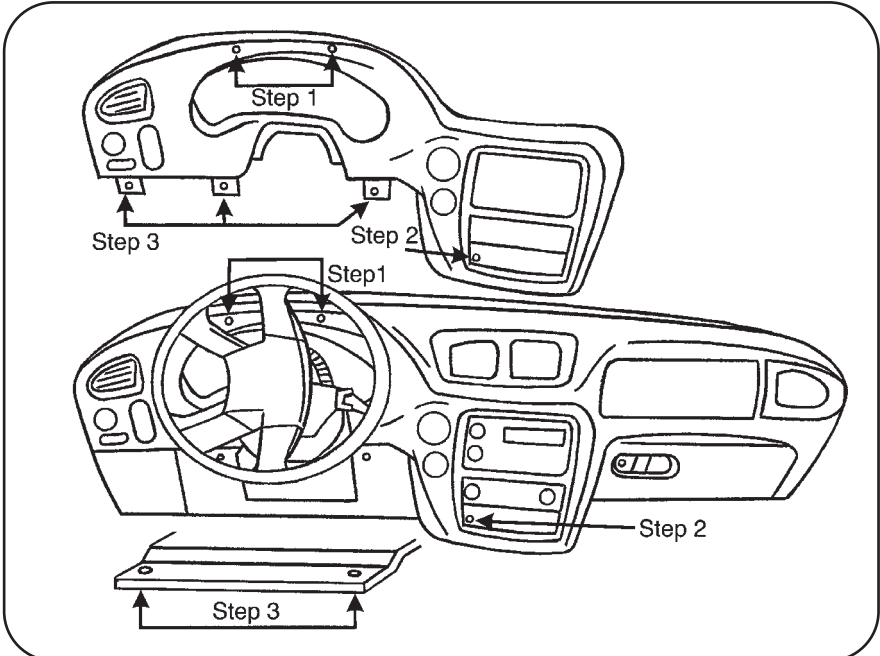
1. Remove the cigarette lighter and climate control knobs.
2. Remove the ashtray and (1) screw exposed.
3. Pull out on the climate control cluster and remove (2) screws exposed.
4. Unclip the radio trim bezel.
5. Remove (4) screws from the factory head unit, slide the unit out and disconnect the wiring.
6. See page 44 for all vehicle tab instructions.



CHEVROLET • Trailblazer 2002-2009

Disconnect the negative battery terminal to prevent an accidental short circuit.

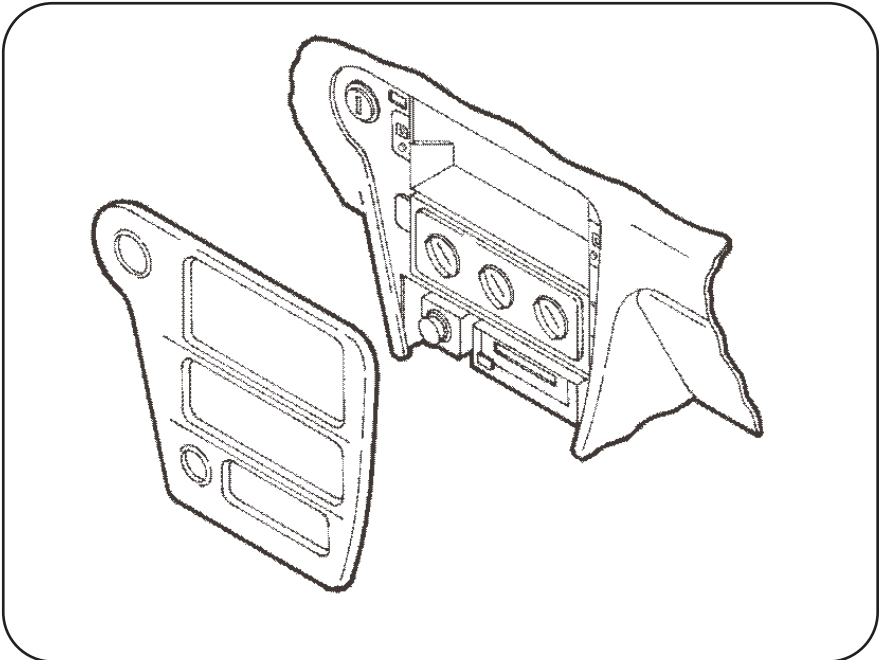
1. Remove (2) Phillips screws inside instrument cluster.
2. Remove (1) Phillips screw under climate controls to the left of the power outlet.
3. Remove (2) 7mm hex heads from under steering column and lower the panel. Remove (3) Phillips screws around steering wheel.
4. Unsnap and remove bezel. (Use caution pulling over hazard switch.)
Remove (3) 7mm hex head screws to remove radio.
5. See page 44 for all vehicle tab instructions.



CHEVROLET • Venture 2000
OLDSMOBILE • Silhouette 2000
PONTIAC • Montana 2000

Disconnect the negative battery terminal to prevent an accidental short circuit.

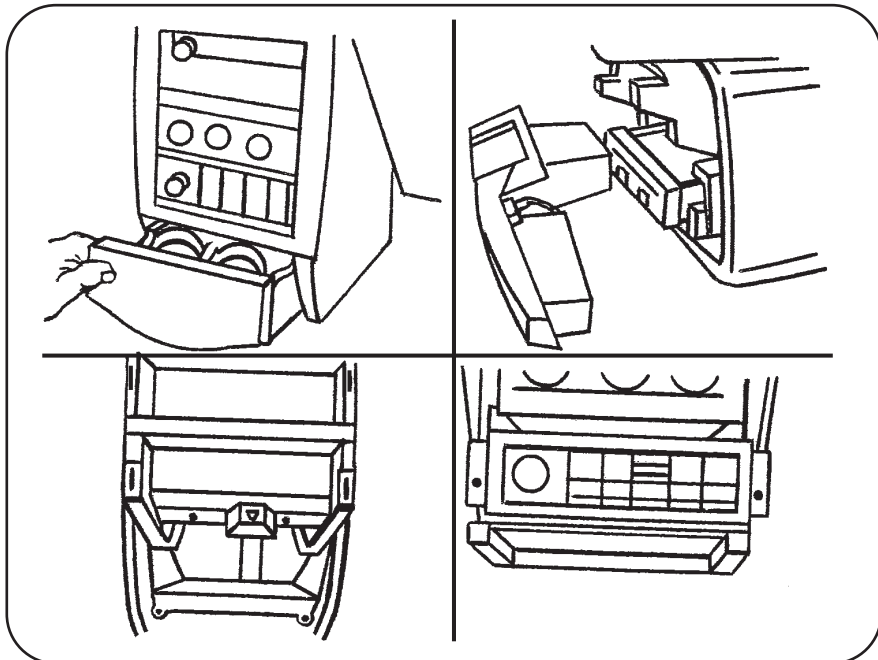
1. Remove the ashtray and (1) Phillips screw exposed in the ashtray cavity.
2. Remove (1) Phillips screw from the cigarette lighter compartment.
3. Remove (3) 9/32" hex-head screws securing the factory head unit and disconnect the wiring.
4. See page 44 for all vehicle tab instructions.



CHEVROLET • Venture 2001-2004
OLDSMOBILE • Silhouette 2001-2004
PONTIAC • Montana 2001-2004

Disconnect the negative battery terminal to prevent an accidental short circuit.

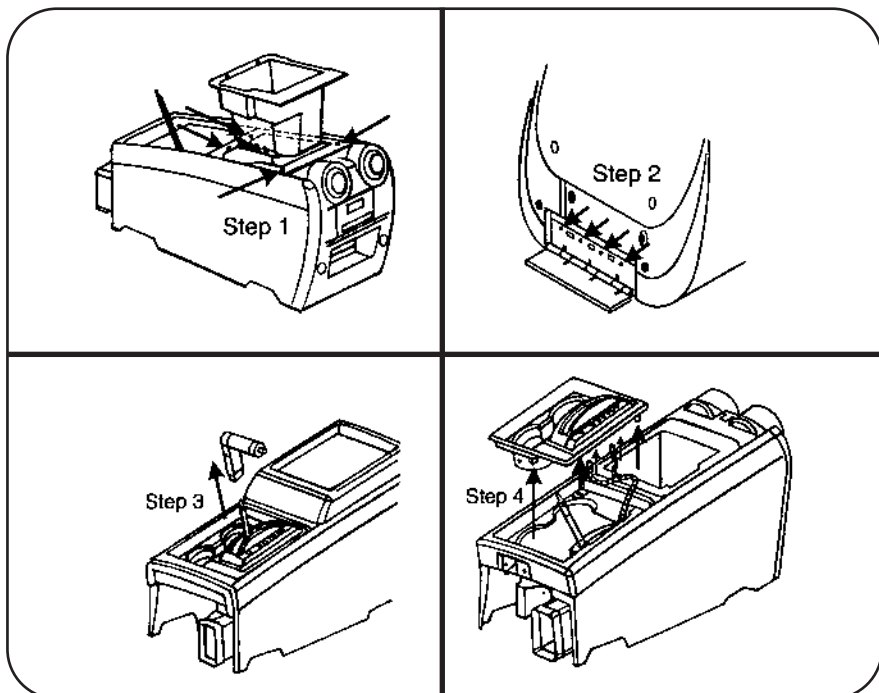
1. Open cup holders and remove (2) Phillips 7mm screws.
2. Unsnap and remove dual power outlet assembly from lower storage.
3. Open lower storage door and remove (2) 7mm screws inside.
4. Models with DVD - Remove DVD player and remove (2) 7 mm screws from behind and (2) 7 mm screws near the floor.
5. Remove lower storage compartment .
6. Remove (2) 7mm screws (facing up) from under cup holder.
7. Remove (3) 7mm hex-head screws and remove radio.
8. See page 44 for all vehicle tab instructions.



HUMMER • H2 2003-2004

Disconnect the negative battery terminal to prevent an accidental short circuit.

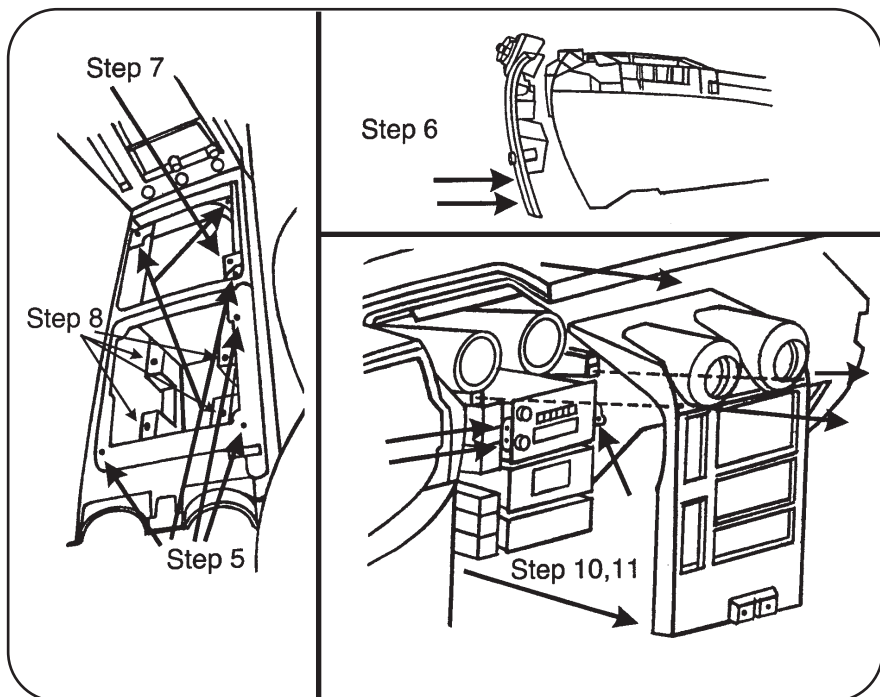
1. Open center console and remove (4) 9/32" screws from console box and remove box.
2. Remove (4) phillips screws from hinge on console door inside console and remove door.
3. Loosen (1) T-15 torx on forward facing side of shift lever and pull up to remove.
4. Unclip cup holder/shifter trim assembly and remove.
5. Remove (6) phillips screws from top of center console.
6. Remove (2) phillips screws from inside pocket on back of center console, then unclip and remove.



HUMMER • H2 2003-2004

Disconnect the negative battery terminal to prevent an accidental short circuit.

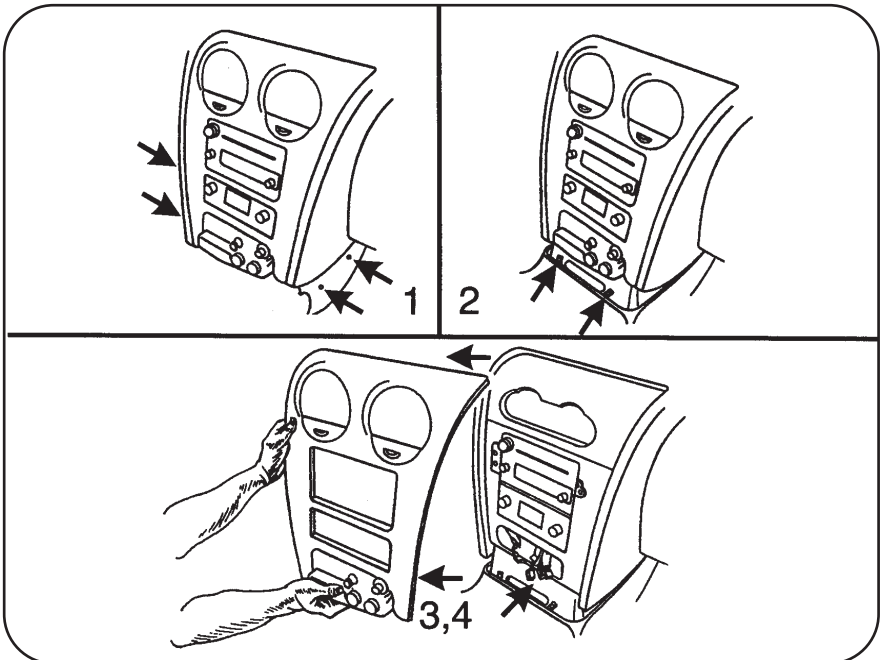
7. Remove (1) 10mm bolt to right of shift lever.
8. Remove (2) phillips screws from under console box on drivers side and (2) phillips screws from under console trimtop on passenger side.
9. Slide control assembly rearwards.
10. Remove (2) T-30 torx bolts from top of rado/climate control trim and unclip and remove.
11. Remove (3) 9/32" screws that hold the radio in.
12. See page 44 for all vehicle tab instructions.7



**GMC • Envoy 2002-09 / ISUZU • Ascender 2003-08
OLDSMOBILE • Bravada 2002-04**

Disconnect the negative battery terminal to prevent an accidental short circuit.

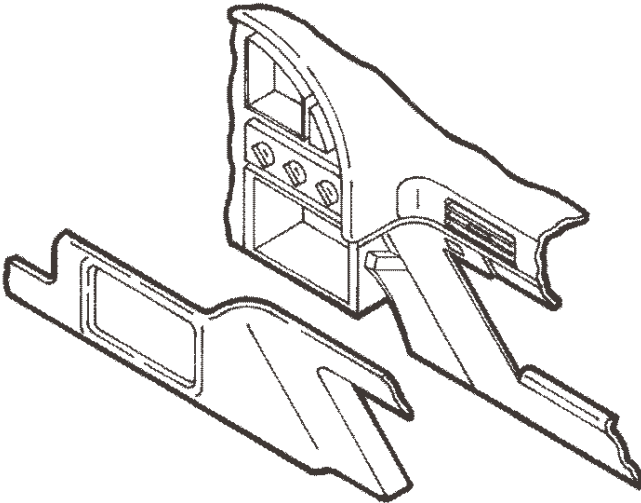
1. Remove (4) Phillips screws, (2) from left and (2) from right of carpeted panel below dash forward of center console.
2. Slide carpeted panel down and backwards to reveal (2) Phillips screws and remove.
3. Unsnap radio bezel and unplug cigarette lighter and accessories.
4. Remove (3) 9/32" hex head screws and remove radio.
5. See page 44 for all vehicle tab instructions.



OLDSMOBILE • Achieva 1996-1998

Disconnect the negative battery terminal to prevent an accidental short circuit.

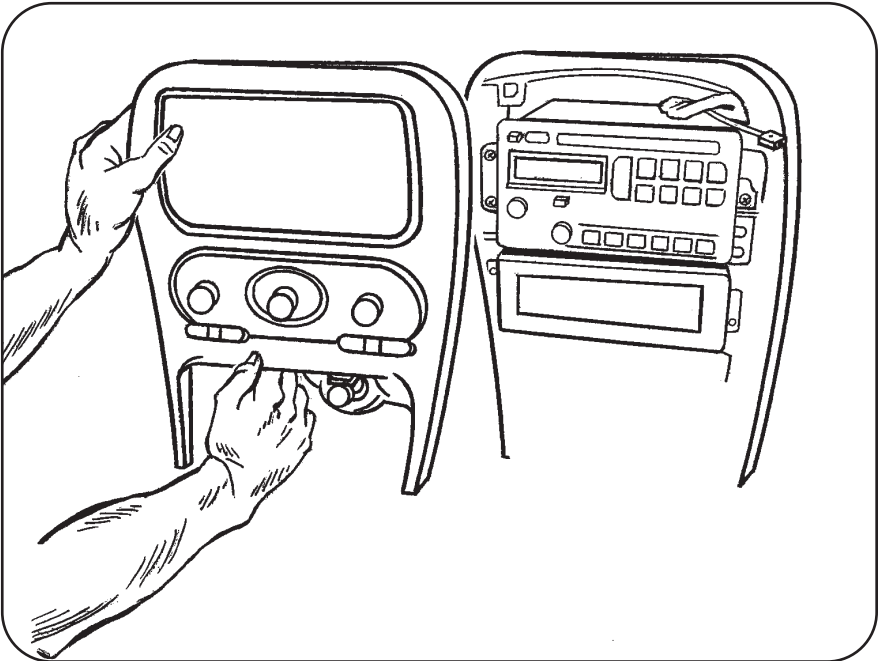
1. Open the glove box, press inward on the walls of the glove box liner and remove the liner.
2. Remove (10) torx-head screws from the glove box location.
3. Remove (2) 9/32" hex-head screws under the steering column.
4. Unclip the dash trim bezel.
5. Remove the screws securing the factory head unit and disconnect the wiring.
6. See page 44 for all vehicle tab instructions.



OLDSMOBILE • Alero 1999-1904

Disconnect the negative battery terminal to prevent an accidental short circuit.

1. Remove shift knob by using a small screwdriver to remove U-clip from front of shifter and pull upward.
2. Unclip and remove shifter trim panel.
3. Unclip and remove radio and climate control panel by pulling from bottom.
4. Remove (3) 9/32" screws from radio and remove.
5. See page 44 for all vehicle tab instructions.

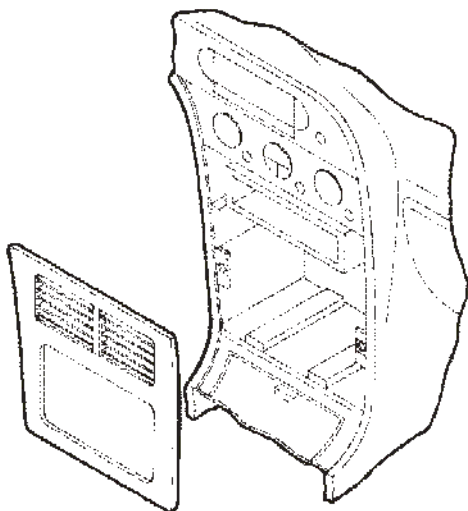


OLDSMOBILE • Aurora 1995-2003

Disconnect the negative battery terminal to prevent an accidental short circuit.

1. Unclip the radio trim bezel and remove.
2. Remove (3) 9/32" screws securing the factory head unit and disconnect the wiring.
3. See page 44 for all vehicle tab instructions.

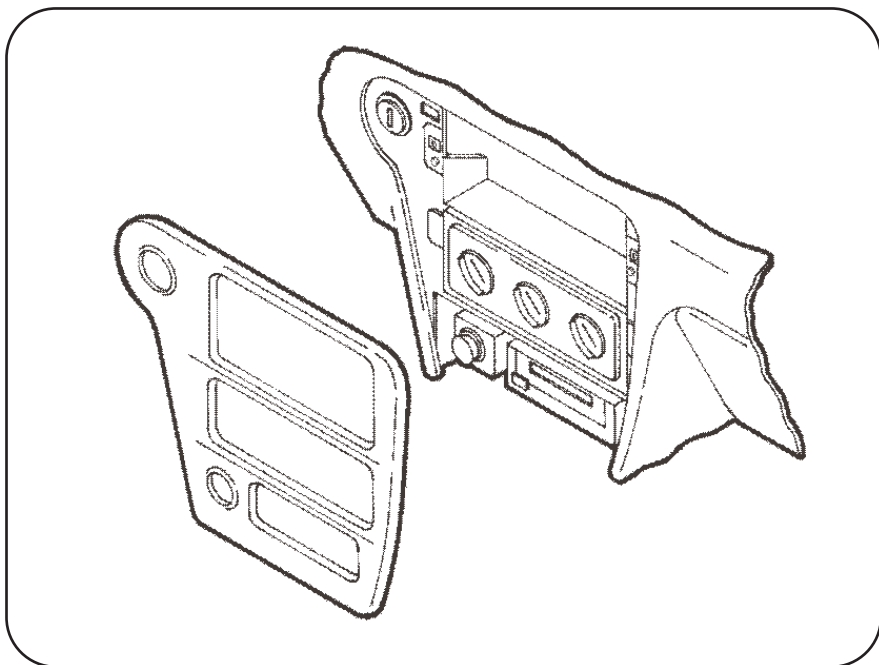
NOTE: For the Buick Le Sabre, Oldsmobile Aurora and the Pontiac Bonneville the (3) speed clips and screws provided with the kit will need to be installed into the sub dash where the screw holes line up on the kit.



OLDSMOBILE • Cutlass 1997-1999**OLDSMOBILE • Cutlass Supreme 1995-1997**

Disconnect the negative battery terminal to prevent an accidental short circuit.

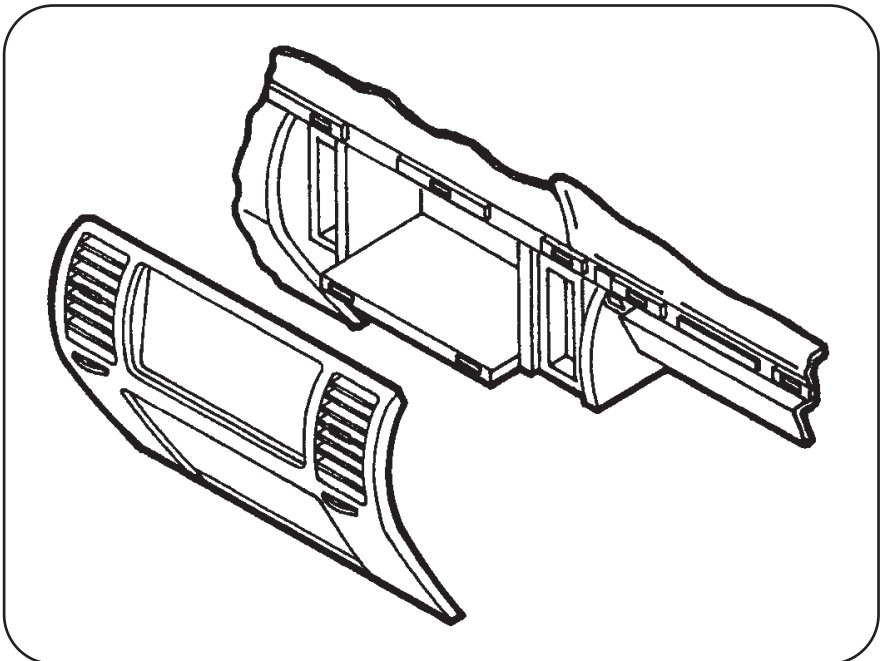
1. Unclip the radio trim bezel and remove.
2. Remove (3) 7mm hex-head screws securing the factory head unit and disconnect the wiring.
3. See page 44 for all vehicle tab instructions.



OLDSMOBILE • Eighty Eight 1994-99 / Ninety Eight 1994-96

Disconnect the negative battery terminal to prevent an accidental short circuit.

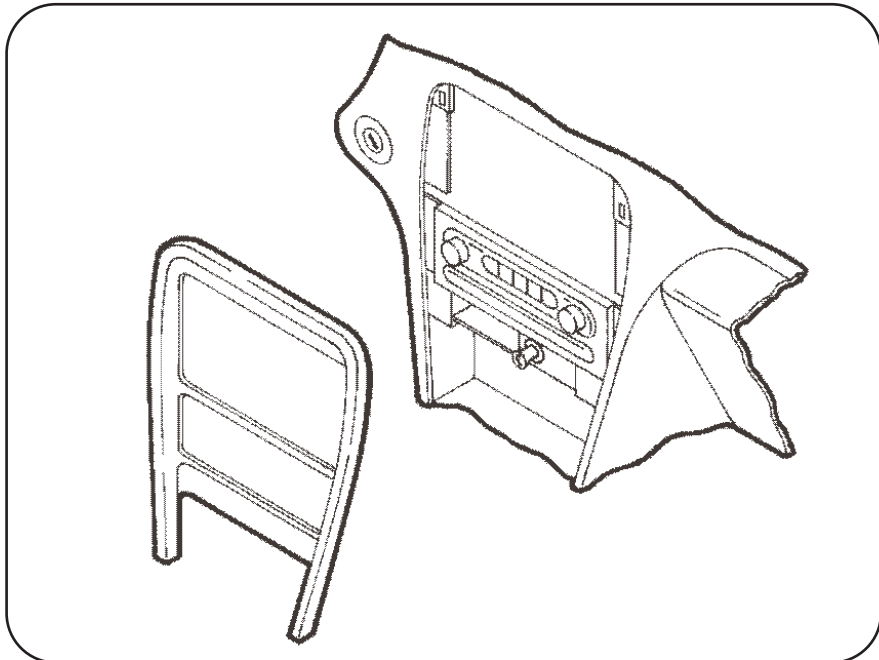
1. Open the glove box and remove (2) hex-head screws securing the wood trim.
2. Unsnap the wood trim and remove.
3. Remove (2) 9/32" hex-head screws below the radio trim bezel.
4. Lift up on the bezel and remove.
5. Remove (3) 9/32" hex-head screws securing the factory head unit and disconnect the wiring.
6. See page 44 for all vehicle tab instructions.



OLDSMOBILE • Intrigue 1998-2002

Disconnect the negative battery terminal to prevent an accidental short circuit.

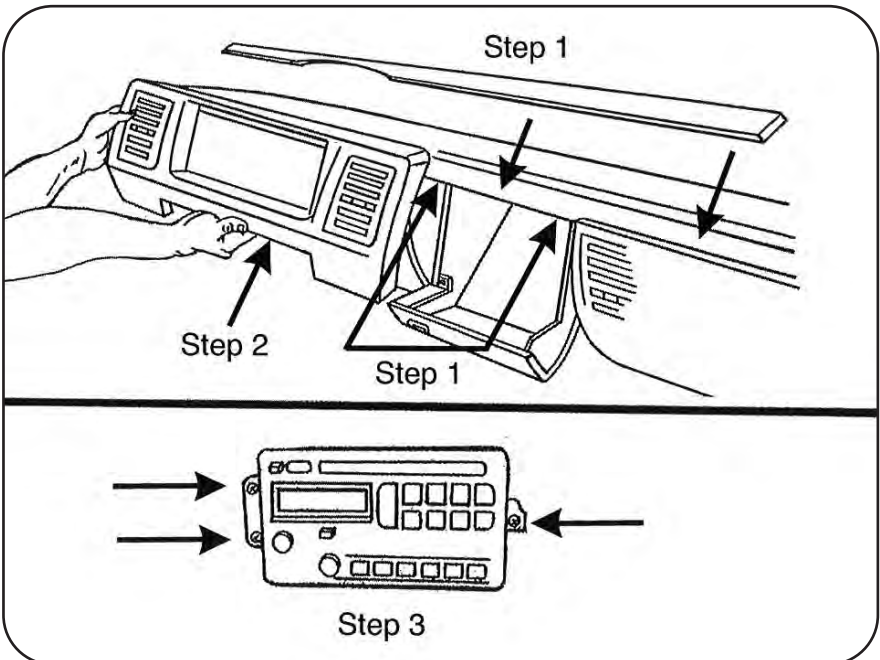
1. Open the center console storage compartment and remove (2) 9/32" hex-head screws exposed.
2. Remove the center console.
3. Unclip the radio trim bezel and remove.
4. Remove (3) 9/32" hex-head screws securing the factory head unit and disconnect the wiring.
5. See page 44 for all vehicle tab instructions.



OLDSMOBILE • L55 1996-1999 / Regency 1997-1998

Disconnect the negative battery terminal to prevent an accidental short circuit.

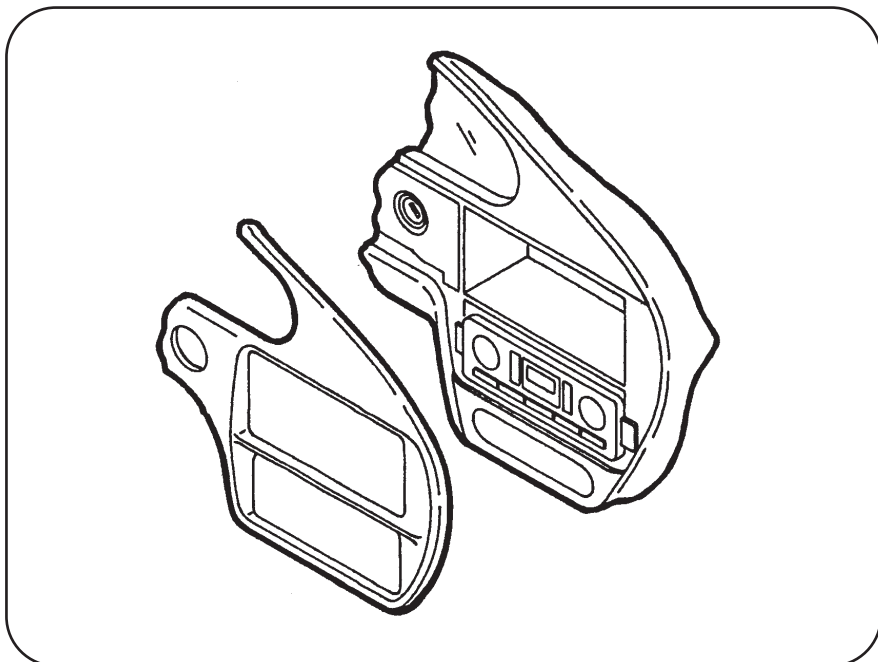
1. Open glove box and remove two-center trim bezels attached by screws.
2. Unsnap and remove radio trim bezel.
3. Remove (3) 9/32" hex-head screws and remove radio.
4. See page 44 for all vehicle tab instructions.



PONTIAC • Aztec 2001-2008

Disconnect the negative battery terminal to prevent an accidental short circuit.

1. Pull out cup holder inserts.
2. Remove (1) Phillips screw exposed inside bottom cup holder.
3. Unsnap and remove shifter trim with cup holders.
4. Remove (2) #15 torx at bottom of radio / climate bezel.
5. See page 44 for all vehicle tab instructions.

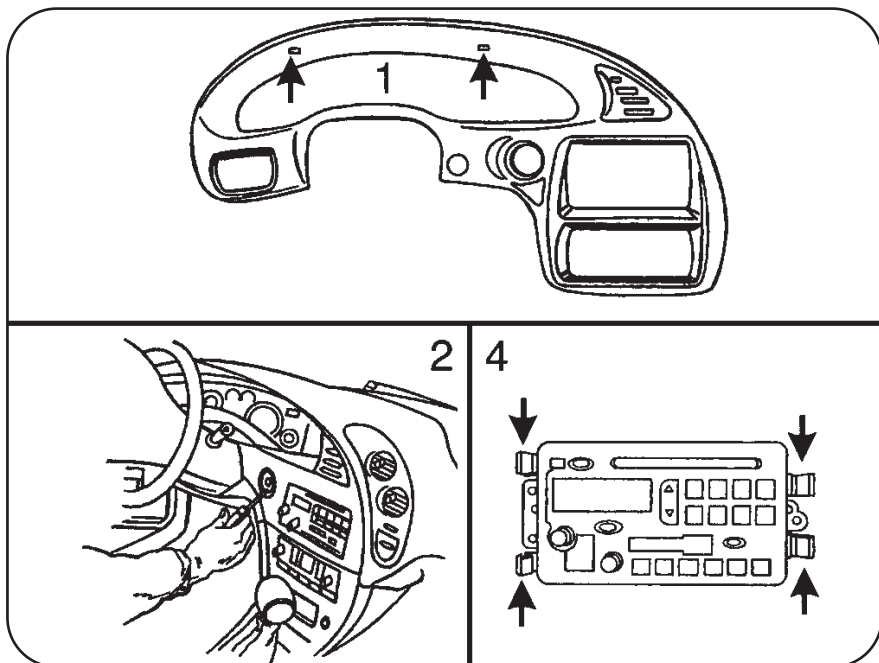


PONTIAC • Bonneville 2000-2004

Disconnect the negative battery terminal to prevent an accidental short circuit.

1. Remove (2) Phillips screws from the instrument cluster.
2. Unclip the ignition trim and remove.
3. Unclip the climate control / radio trim panel and remove.
4. Depress the spring clips on each side of the factory head unit and remove.
5. See page 44 for all vehicle tab instructions.

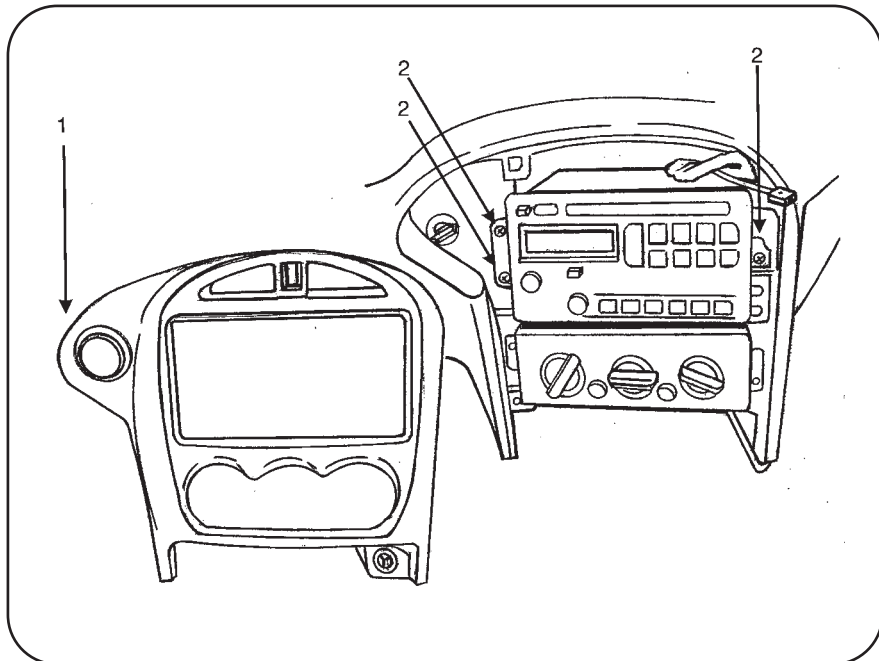
NOTE: For the Buick Le Sabre, Oldsmobile Aurora and the Pontiac Bonneville the (3) speed clips and screws provided with the kit will need to be installed into the sub dash where the screw holes line up on the kit.



PONTIAC • Grand Am 2001-2004

Disconnect the negative battery terminal to prevent an accidental short circuit.

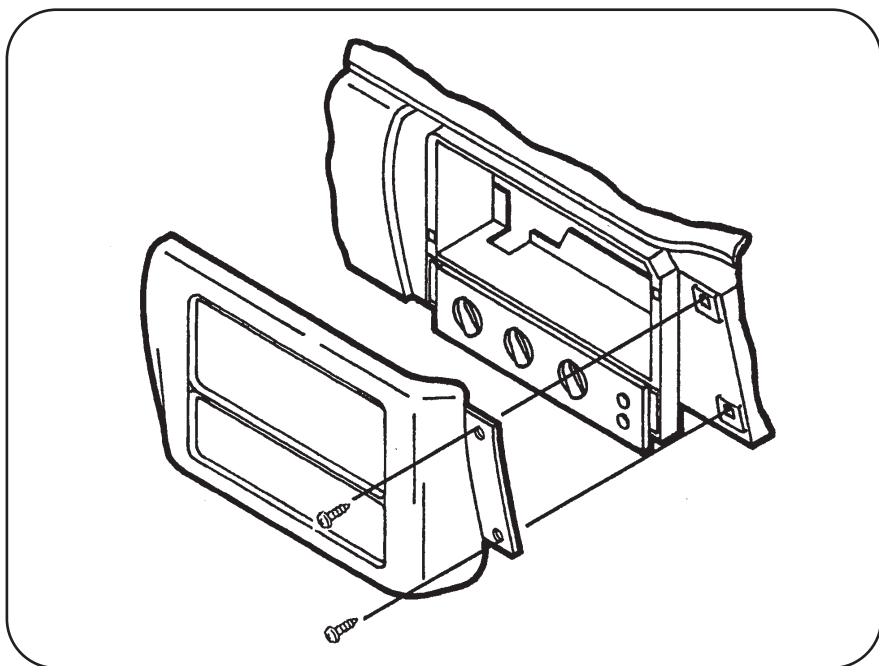
1. Unsnap and remove radio trim bezel.
2. Remove (3) 9/32" screws from radio brackets and remove radio.
3. See page 44 for all vehicle tab instructions.



PONTIAC • Sunfire 2000-2004

Disconnect the negative battery terminal to prevent an accidental short circuit.

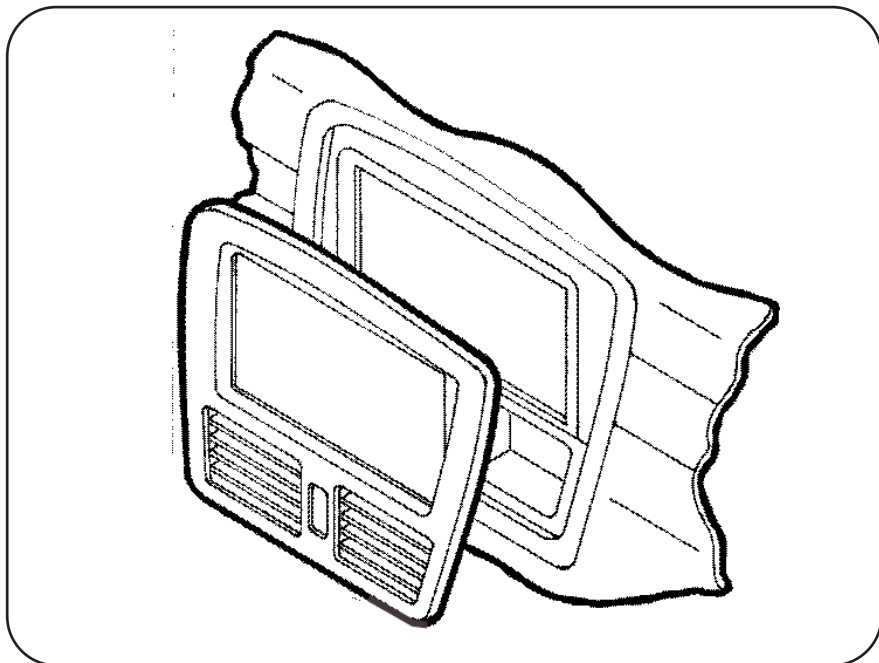
1. Open the glove box and remove (2) Phillips screws exposed on the right edge of the radio trim bezel.
2. Unclip the bezel and remove.
3. Remove (3) 9/32" hex-head screws securing the factory head unit and disconnect the wiring.
4. See page 44 for all vehicle tab instructions.



SUZUKI • Aerio 2002

Disconnect the negative battery terminal to prevent an accidental short circuit.

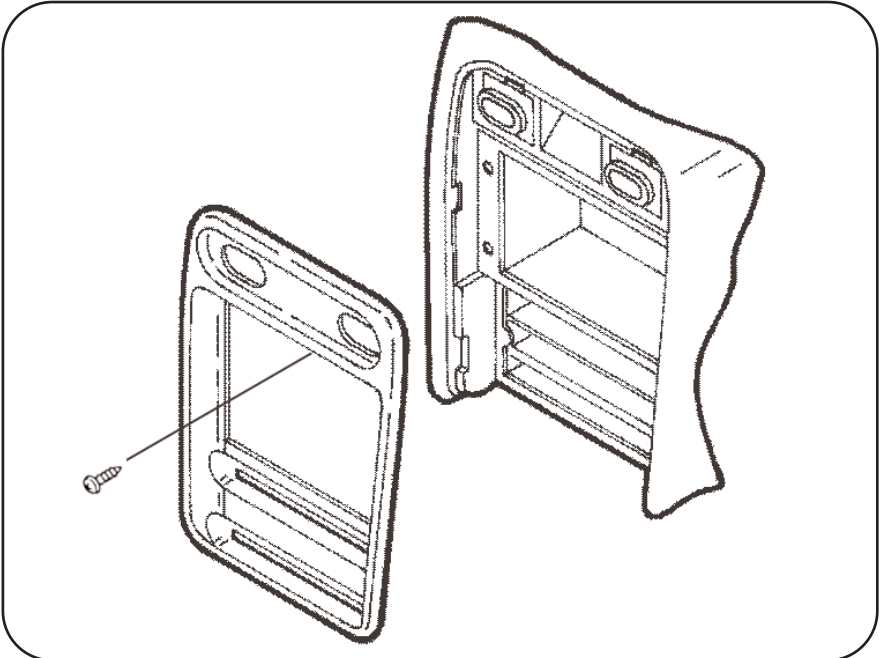
1. Unclip the dash trim bezel and remove.
2. Remove (4) Phillips screws securing the factory head unit and disconnect the wiring.
3. See page 44 for all vehicle tab instructions.



SUZUKI • Esteem 1995-2003

Disconnect the negative battery terminal to prevent an accidental short circuit.

1. Remove the climate control knobs.
2. Remove (1) Phillips screw located above the radio opening.
3. Unclip the radio trim bezel.
4. Remove (4) screws from the factory head unit, slide the unit out and disconnect the wiring.
5. See page 44 for all vehicle tab instructions.



CHEVROLET • Colorado 2004-2009

Disconnect the negative battery terminal to prevent an accidental short circuit.

1. Unsnap and remove the entire panel surrounding the radio and A/C controls.

(Figure A)

2. Remove (3) 9/32" screws securing the radio to remove. **(Figure B)**

Figure A

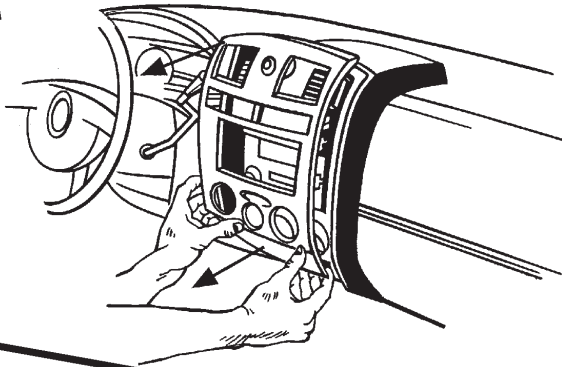
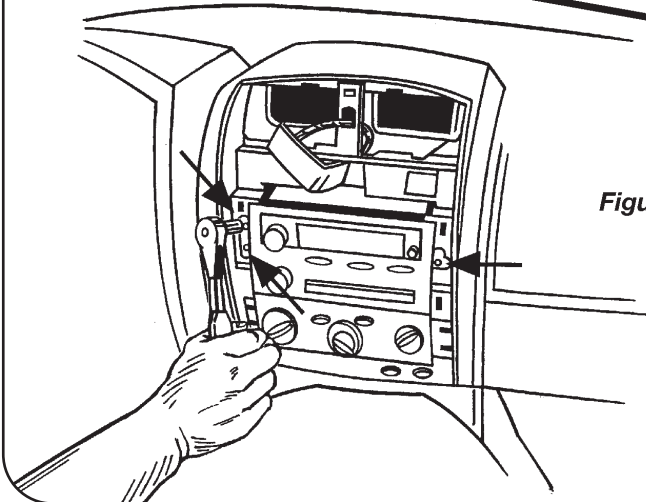


Figure B



GMC • Canyon 2004-2009

Disconnect the negative battery terminal to prevent an accidental short circuit.

1. Unsnap and remove the entire panel surrounding the radio and A/C controls.

(Figure A)

2. Remove (3) 9/32" screws securing the radio to remove. **(Figure B)**

Figure A

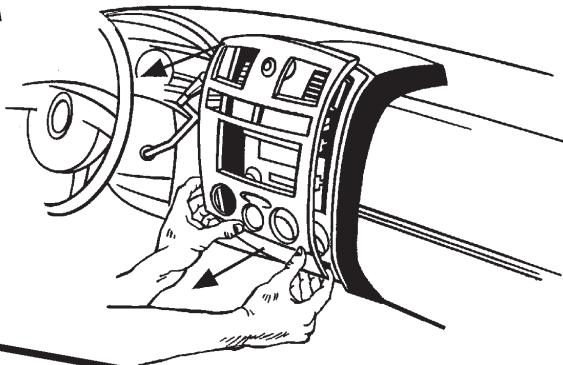
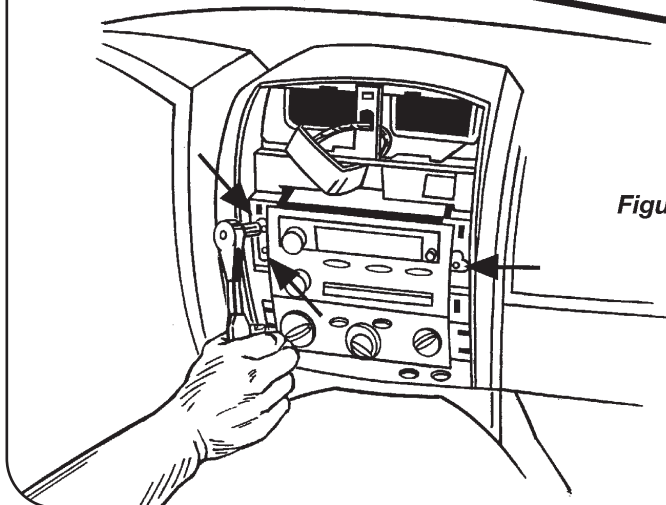


Figure B



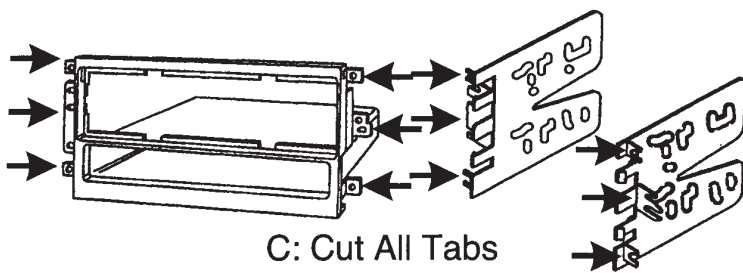
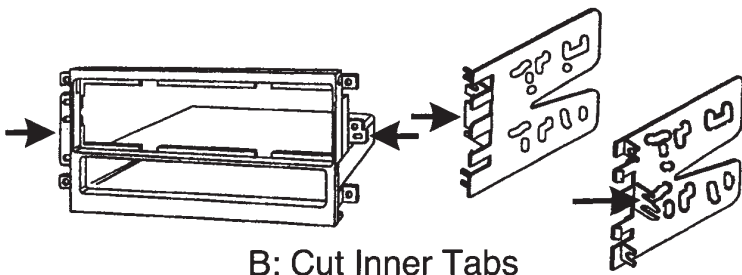
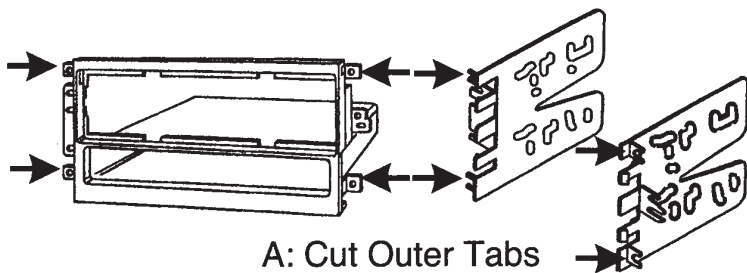
ALL VEHICLES

A = GM Vehicles

B = Suzuki Vehicles

C = Cadillac Fleetwood / Brougham Vehicles

Using a utility knife:

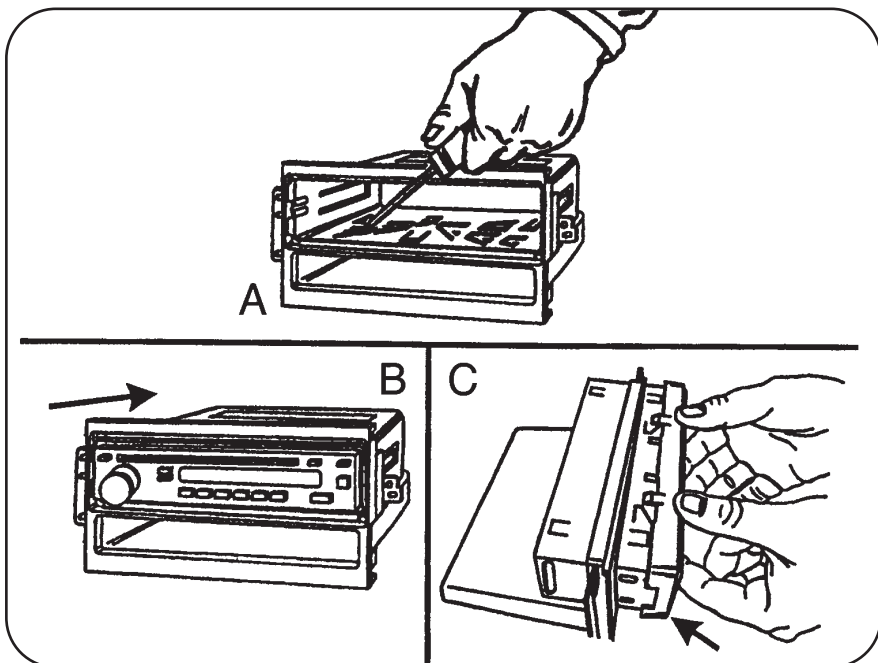


ALL VEHICLES - DIN HEAD UNIT PROVISIONS

Disconnect the negative battery terminal to prevent an accidental short circuit.

1. Slide DIN cage into the Housing and secure by bending metal locking tabs outward. See Figure A
2. Slide radio into DIN cage. See Figure B
3. Skip to step #1 in the Final Assembly on page 49.

NOTE: A snap-in DIN spacer has been provided for some applications where depth is an issue. Snap the spacer in the housing and slide DIN cage into the assembly and secure by bending metal locking tabs down. See Figure C

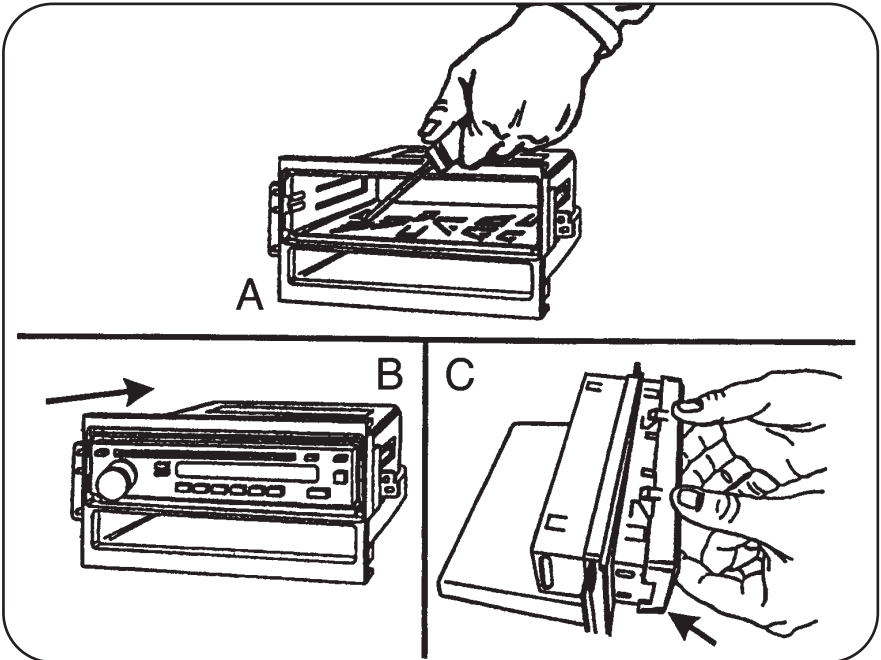


ALL VEHICLES - DIN HEAD UNIT PROVISIONS

Disconnect the negative battery terminal to prevent an accidental short circuit.

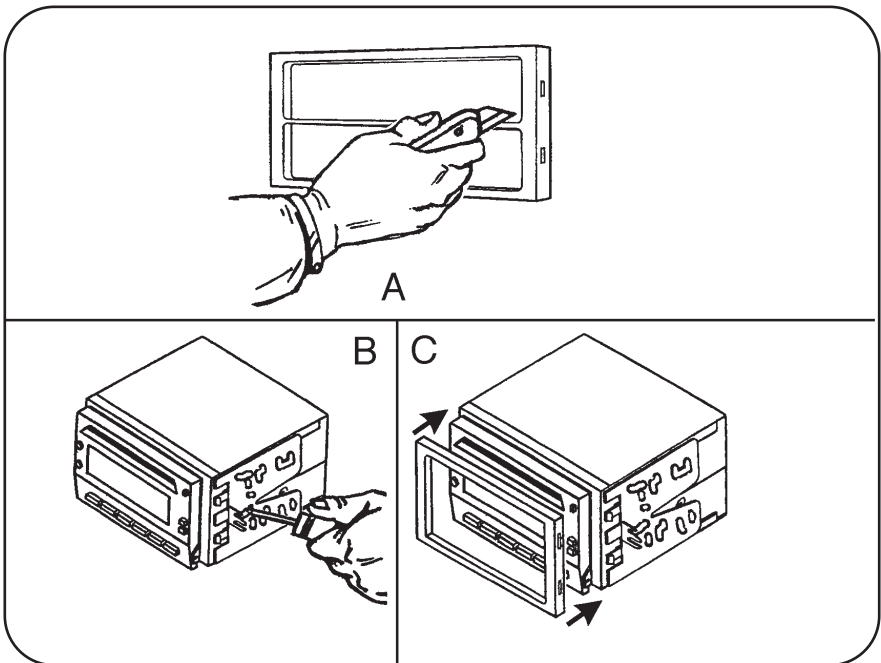
1. Slide DIN cage into the Housing and secure by bending metal locking tabs outward. See Figure A
2. Slide radio into DIN cage. See Figure B
3. Skip to step #1 in the Final Assembly on page 49.

NOTE: A snap-in DIN spacer has been provided for some applications where depth is an issue. Snap the spacer in the housing and slide DIN cage into the assembly and secure by bending metal locking tabs down. See Figure C



ALL VEHICLES - DOUBLE DIN HEAD UNIT PROVISION

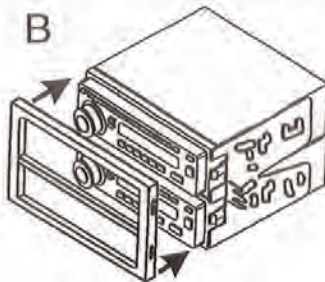
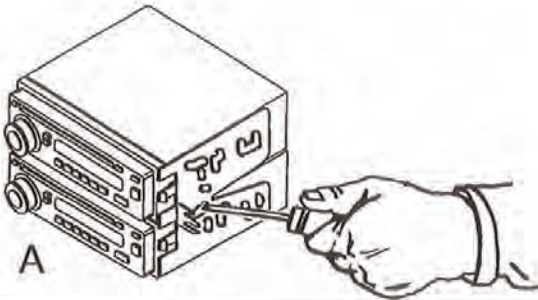
1. Remove the center bar from DDIN Trimplate. See Figure A
2. Attach the DDIN / stacked ISO brackets by aligning the holes and securing the unit to the brackets using the screws supplied with the unit.
See Figure B
3. Snap the bracket & unit assembly to the DDIN Trimplate. See Figure C
4. Skip to step #1 in the Final Assembly on page 49.

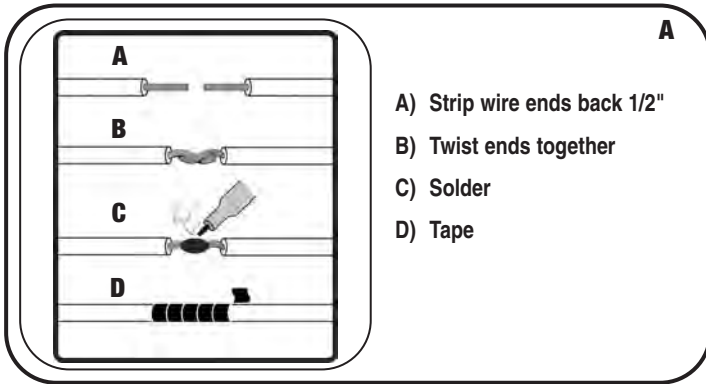


ALL VEHICLES - TWO ISO RADIOS PROVISION

Disconnect the negative battery terminal to prevent an accidental short circuit.

1. Attach the DDIN/stacked ISO brackets by aligning the holes and securing the units to the brackets using the screws supplied with the units. See Figure A
2. Snap the bracket & unit assembly to the DDIN Trimplate. See Figure B.
3. Skip to step #1 in the Final Assembly on page 49.



ALL VEHICLES


1. Locate the factory wiring harness in the dash. Metra recommends using the proper mating adapter and making connections as shown. (Isolate and individually tape off the ends of any unused wires to prevent electrical short circuit.) See figure A
2. Re-connect the battery terminal and test the unit for proper operation.
3. Reassemble dash in the reverse order of your specific vehicle's Dash Disassembly.

99-2003 INSTRUCTIONS



KNOWLEDGE IS POWER

Enhance your installation and fabrication skills by enrolling in the most recognized and respected mobile electronics school in our industry. Log onto www.installerinstitute.com or call 800-354-6782 for more information and take steps toward a better tomorrow.



1-800-221-0932



www.metraonline.com

REV. 04/15/09 © COPYRIGHT 2004-2009 METRA ELECTRONICS CORPORATION INST99-2003