



# INSTALLATION INSTRUCTIONS FOR PART 99-30105

## APPLICATIONS 2010 CHEVY CAMARO 99-30105

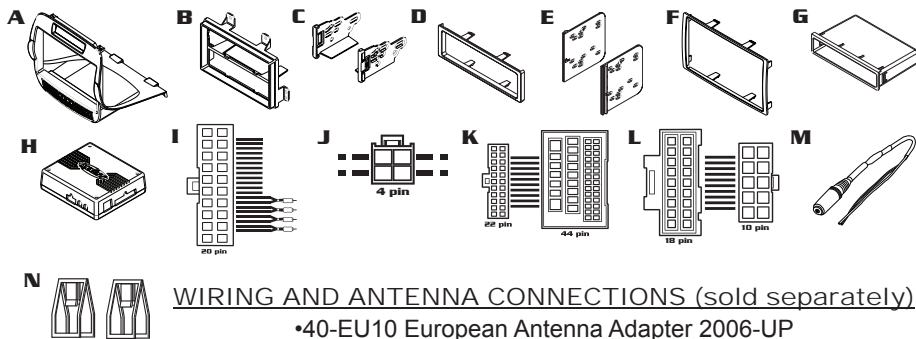
### KIT FEATURES

- DIN Head Unit Provision w/ Pocket
- ISO DIN Head Unit Provision w/ Pocket
- DDIN Head Unit Provision
- ISO Stacked Head Unit Provision
- Painted Silver to Match Factory Dash



### KIT COMPONENTS

- A) Radio Trim Panel •B) Radio Housing •C) ISO Brackets •D) ISO Trim Plate
- E) DDIN Brackets •F) DDIN Trim Plate •G) Pocket •H) Interface
- I) 20 Pin GM Harness
- J) 4 Pin Harness w/ Stripped Leads •K) 22 Pin to 44 Pin Camaro Harness
- L) 18 Pin to 10 Pin HVAC Harness
- M) Female 3.5mm Connector w/ Brown and Brown/White Wires •N) (2) Panel Clips



### TOOLS REQUIRED

- Phillips Screwdriver • Panel Removal Tool • Small Flat Blade Screwdriver
- Socket Wrench • Tape • Crimping Tool •Connectors (i.e. Butt Connectors)



METRA. THE WORLD'S BEST KITS.™



1-800-221-0932



metraonline.com

© COPYRIGHT 2004-2010 METRA ELECTRONICS CORPORATION



**99-30105**

## **TABLE OF CONTENTS**

### **DASH DISASSEMBLY**

- **CHEVY CAMARO 2010 . . . . . 1-3**

### **KIT PREPARATION**

- **CHEVY CAMARO 2010 . . . . . 4**

### **KIT ASSEMBLY**

#### **CHEVY CAMARO 2010**

- **DIN HEAD UNIT PROVISION . . . . . 5**
- **ISO DIN HEAD UNIT PROVISION . . . . . 6**
- **DDIN/STACKED ISO DIN HEAD UNIT PROVISION . . . . . 7**

### **INTERFACE WIRING**

- **CHEVY CAMARO 2010 . . . . . 8-18**

**\*NOTE: Refer Also to the instructions included with the aftermarket radio.**



#### **KNOWLEDGE IS POWER**

Enhance your installation and fabrication skills by enrolling in the most recognized and respected mobile electronics school in our industry. Log onto [www.installerinstitute.com](http://www.installerinstitute.com) or call 800-354-6782 for more information and take steps toward a better tomorrow.



**Metra recommends MECP certified technicians**

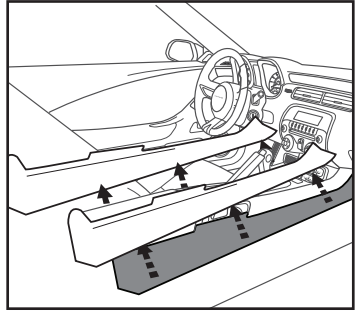
## CHEVY CAMARO 2010

- 1** Disconnect the negative battery terminal to prevent an accidental short circuit.

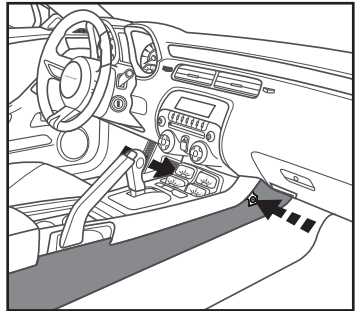
**For vehicles without UMQ gauge panel, unclip and remove shifter trim panel and skip to step 10.**

- 2** Unclip and remove the (2) side trim panels running the length of the center console. (Fig. A)
- 3** Remove (1) Phillips screw from each side of the front of the center console. (Fig. B)
- 4** Remove (2) Phillips screws per side from the cover on the back of the center console then unclip and remove the cover. (Fig. C)

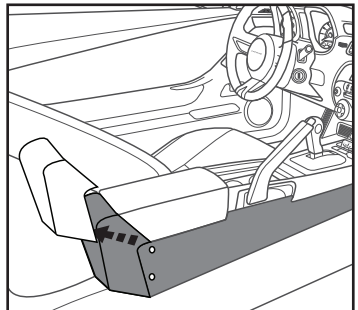
**A**



**B**



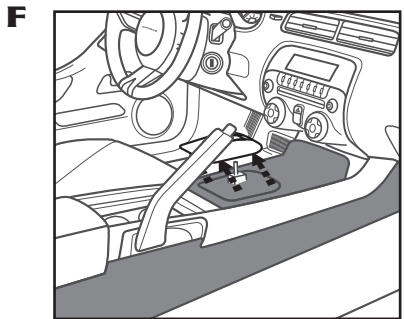
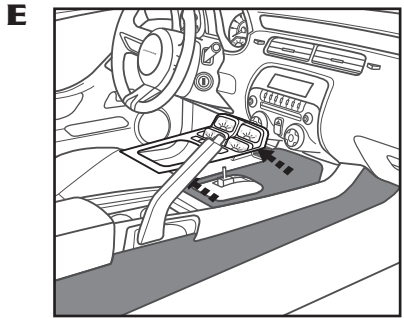
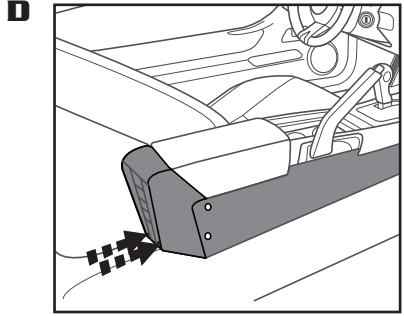
**C**



Continued on Pg. 2 .....

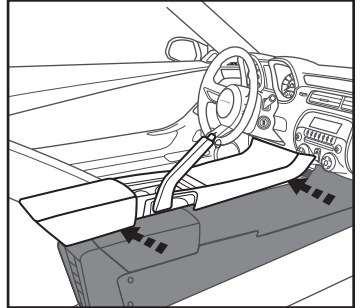
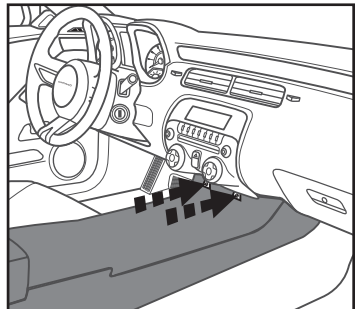
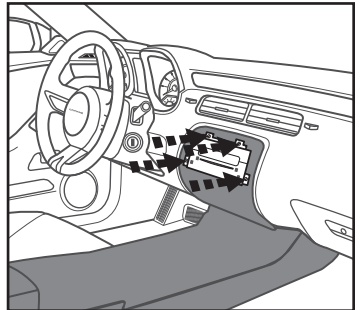
## CHEVY CAMARO 2010

- 5** Remove (2) Phillips screws exposed under the cover on the back of console. (Fig. D)
- 6** Remove T20 from front of shifter on Auto Trans., remove shifter.
- 7** Remove gauge cluster / trim panel around shifter. (Fig. E)
- 8** Remove shifter surround panel, (4) 7mm bolts, unclip each side and lift up. (Fig. F)



## CHEVY CAMARO 2010

- 9** Lift up on the rear of the console and slide toward the back of the vehicle then unclip and remove the entire center console. (Fig. G)
- 10** Remove (2) 9/32" screws securing the climate control/radio trim panel and remove. (Fig. H)
- 11** Remove (4) Phillips screws securing the radio chassis. (Fig. I)
- 12** Reassemble parts together from steps 7-9 and reassemble as one unit after radio installation.

**G****H****I**

Continue to Kit Preparation