



INSTALLATION INSTRUCTIONS



2013-2014 DODGE 2500/3500 6.7L BS | PART NO. 17051

BILL OF MATERIALS:



- 1. INLET PIPE ASSY FOR LONG BED.
- 2. INLET PIPE ASSY FOR MEGA CAB.
- 3. OVER AXLE PIPE
- 4. TAIL PIPE ASSY



WEAR SAFETY GLASSES



READ INSTRUCTIONS THOROUGHLY BEFORE INSTALLING PRODUCT

SHOP SUPPLIES:



SPRAY LUBRICANT

To ease removal of existing exhaust components (especially on older vehicles) spray penetrating lubricant on all fasteners and hangers/insulators that will be loosened or removed and let soak before disassembly.

HARDWARE KIT:

- 1. [3] 4.00" Clamp

MINIMUM REQUIRED TOOLS:



15mm



Hanger Tool (Or Pry Bar)

MAGNAFLOW RECOMMENDS PROFESSIONAL INSTALLATION ON ALL THEIR PRODUCTS



WARNING: When working on, under, or around any vehicle exercise caution. Please allow the vehicle's exhaust system to cool before removal, as exhaust system temperatures may cause severe burns. If working without a lift always consult vehicle manual for correct lifting specifications. Always wear safety glasses and ensure a safe work area. Serious injury or death could occur if safety measures are not followed.

ATTENTION: Always install any supplied band or U-bolt clamps to the proper torque specifications of 40-45 ft-lbs for band clamps and 30-35 ft-lbs for U-bolt clamps. Over tightening will result in the clamp breaking and will NOT be warranted by MagnaFlow.

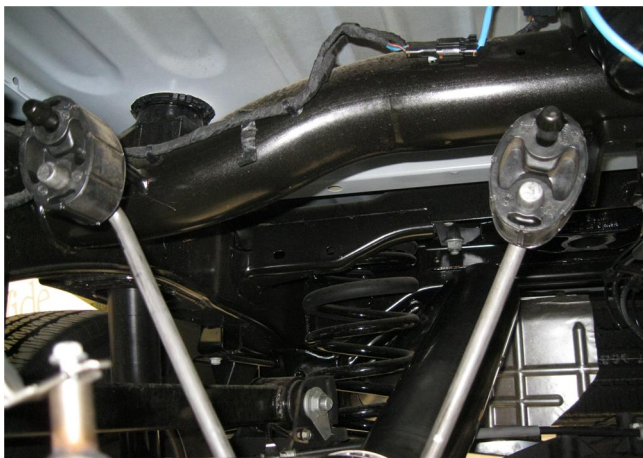
INSTALLATION INSTRUCTIONS



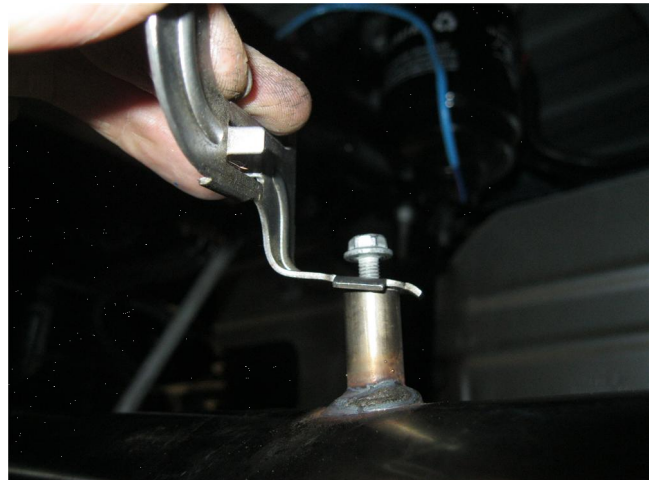
Step 1. Begin removal of the OEM system by unclamping the OEM Extension Pipe and muffler from the junction behind the DPF. You can then disengage the welded hangers from the rubber insulators, working rearward finish removing the system. Do not damage or discard the rubber insulators or sensor bracket and fastener, as they will be reused to mount the new system.



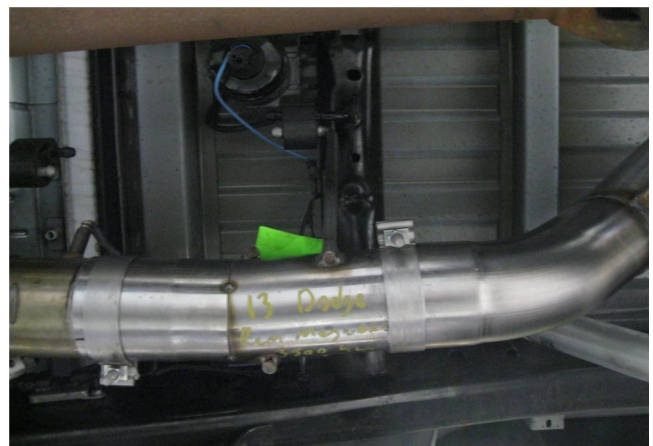
Step 2. Begin by attaching either the Inlet Pipe options or the Over Axle Pipe to the DPF outlet using the supplied clamp. Fit hangers into rubber insulators on Mega Cab and Long Bed versions. Leave all clamps loose until final adjustment.



Step 3. The longer Inlet Pipe Extension will be needed for Long Bed applications only.



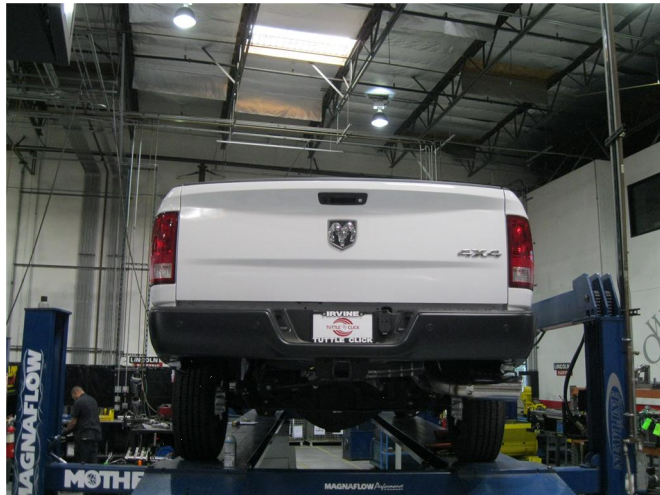
Step 4. When using the Long Bed extension pipe attach the OEM cable bracket using the OEM bolt.



Step 5. The shorter Inlet Pipe Extension will be needed for all Mega Cab applications.



Step 6. Next install the Tail Pipe Assembly using the supplied 4.00" clamp and fit the welded hanger to the rubber insulator.



Step 7. Once a final position has been chosen for the new exhaust system, evenly tighten all clamps from front to rear using the torque specifications on page one of the instructions. Inspect all fasteners after 25-50 miles of operation and re-tighten if necessary.