



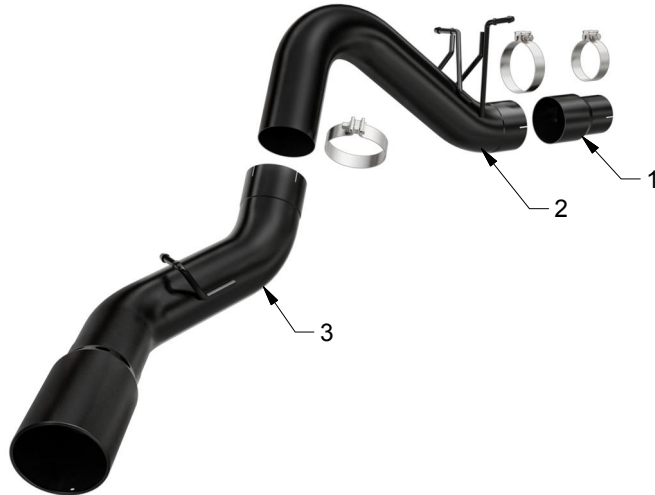
INSTALLATION INSTRUCTIONS



2015 SILVERADO 2500HD BLACK

PART NO. 17055

BILL OF MATERIALS:



- 1. 4"-5" NIPPLE
- 2. OVER AXLE PIPE ASSY
- 3. TAIL PIPE ASSY



WEAR SAFETY GLASSES



READ INSTRUCTIONS THOROUGHLY BEFORE INSTALLING PRODUCT

SHOP SUPPLIES:



SPRAY LUBRICANT

To ease removal of existing exhaust components (especially on older vehicles) spray penetrating lubricant on all fasteners and hangers/insulators that will be loosened or removed and let soak before disassembly.

HARDWARE KIT:

- 1.[2] 5.00" Clamp
- 2.[1] 4.00" Clamp
- 3.[1] O2 Sensor Plug

MINIMUM REQUIRED TOOLS:



15mm
23mm



Hanger Tool
(Or Pry Bar)



SAWZALL, SIMILAR
CUTTING TOOL

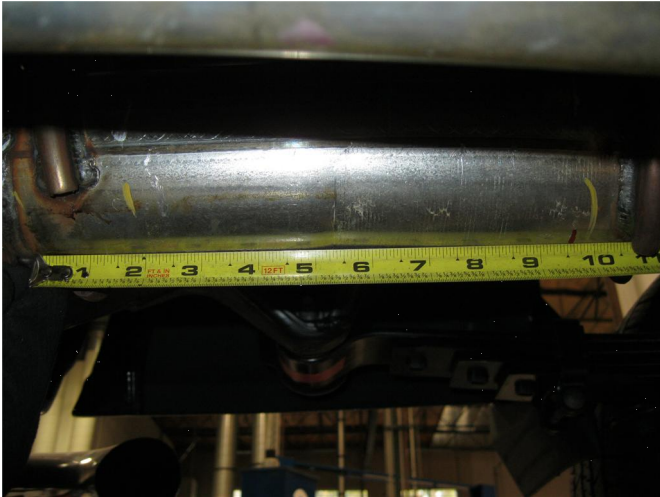
MAGNAFLOW RECOMMENDS PROFESSIONAL INSTALLATION ON ALL THEIR PRODUCTS



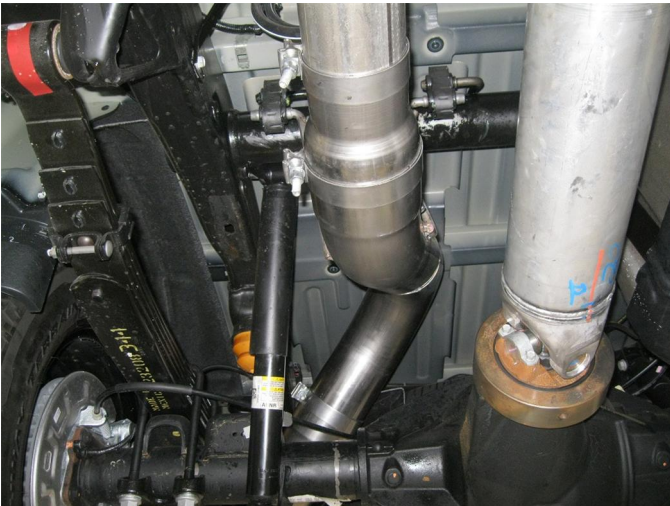
WARNING: When working on, under, or around any vehicle exercise caution. Please allow the vehicle's exhaust system to cool before removal, as exhaust system temperatures may cause severe burns. If working without a lift always consult vehicle manual for correct lifting specifications. Always wear safety glasses and ensure a safe work area. Serious injury or death could occur if safety measures are not followed.

ATTENTION: Always install any supplied band or U-bolt clamps to the proper torque specifications of 40-45 ft-lbs for band clamps and 30-35 ft-lbs for U-bolt clamps. Over tightening will result in the clamp breaking and will NOT be warranted by MagnaFlow.

INSTALLATION INSTRUCTIONS



Step 1. To begin the removal of the OEM system check to see if it has an o2 sensor connected to the exhaust system, if so remove the sensor and hang it out of the way. Next, you will need to cut the exhaust pipe behind the DPF. If your vehicle has a Crew Cab/Standard Bed you will need to cut 31.50" rearward of the DPF. For Crew Cab/Short Bed cut at 18.25". For Extended Cab/Short Bed cut at 9.50" as shown in the diagram. You can then disengage the welded hangers from the rubber insulators, working rearward finish removing the system. Do not damage or discard the rubber insulators, as they will be reused to mount the new system.



Step 2. Begin installation of the Magnaflow system by first clamping the 4"-5" Adapter Nipple to the newly cut outlet of the DPF using a supplied 4.00" clamp. Then attached the Over Axle Assy to the Adapter Nipple using the supplied 5" clamp and fitting the hangers in the rubber insulators (leave all clamps loose for final adjustment of the complete system). If your vehicle has an O2 sensor re-install at this time. If not, install the provided sensor boss plug.



Step 3. Next Install the Tail Pipe Assembly in a similar fashion using the supplied 5.00" clamps and by fitting the welded hangers into the rubber insulators.



Step 4. Once a final position has been chosen for the new exhaust system, evenly tighten all clamps from front to rear using the torque specifications on page one of the instructions. Inspect all fasteners after 25-50 miles of operation and re-tighten if necessary.