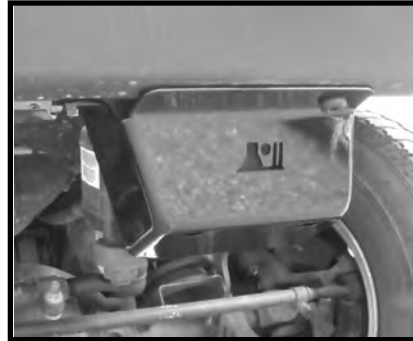


97-06 TJ - LJ STEERING SKID PLATE

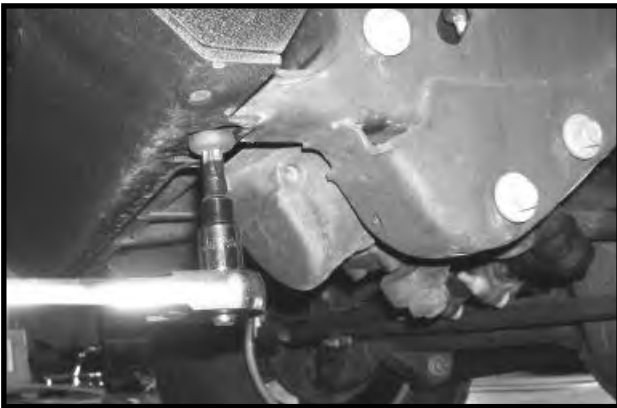
1. TJ -LJ Steering Skid Plate (1)
2. M10 x 30 Hex Head Bolt (1)
3. M10 Lock Washer (1)
4. M10 Hex Nut with Rod (1)



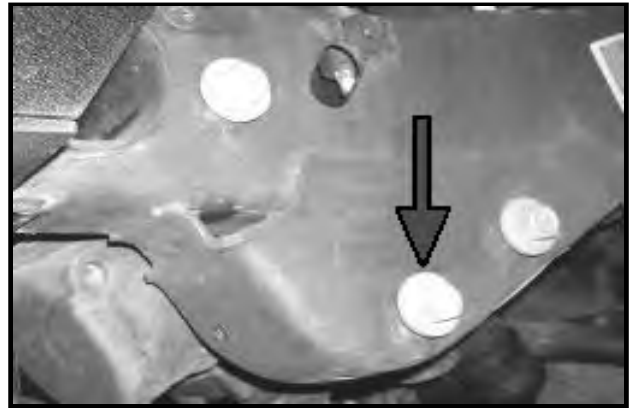
NOTE: This skid plate is designed to be used with the stock bumper. Some aftermarket bumpers may require modification.

1. Position skid plate up to the steering box with the front flange over lower bumper mounting bolt. make sure the lower side mounting hole lines up with bolts in steering box.

2. Remove lower drivers side mounting bolt from bumper. **DO NOT DISCARD.** Hardware to be reused.



3. Remove the lower steering box mounting bolt **DO NOT DISCARD.** Hardware to be reused.



4. Place skid plate in location to line up with the lower bumper mount and the lower side frame mount.

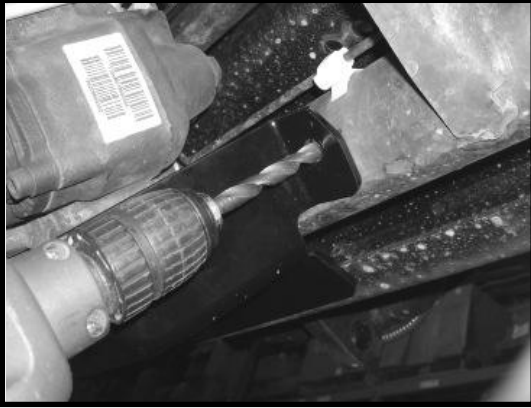


5. Secure to bumper and frame using hardware removed in steps 2 & 3.



97-06 TJ - LJ STEERING SKID PLATE

6. With skid plate mounted drill hole in front frame cross member as shown. A 13/32" bit should be used.



7. Insert M10 hex nut - Rod through the drivers side opening in the frame cross member.



WARNING: Never Fasten Steering Skid plate in a location that will damage or interfere with electrical wires, brake lines, steering mechanisms or any other related objects. Damage to steering system, brake and or electrical system may occur if installed wrong. Instructions must be followed and all bolts and fasteners tightened to specified torque.

8. Install M10 x 30 hex bolt and M10 lock washer though skid plate and frame cross member and tighten to M10 hex nut-rod.



9. Tighten the lower bumper and lower frame to 65 ft-lbs and the cross member bolt to 20 ft-lbs.

**Rugged Ridge Limited Warranty**

Applies to Rugged Ridge Products by OMIX-ADA Inc.

Please find warranty card supplied with product for more information. Warranty card should be filled out and returned to address listed below.

OMIX-ADA Inc.

**460 Horizon Dr. Suite 400
Suwanee, Georgia 30024**