



Installation Instructions
Recovery Bumper W/ Tire Carrier
87-06 Wrangler
Part number 78615

Included Components

Tire Carrier Component

<u>QTY</u>	<u>Description</u>
1	Tire Carrier
1	Latch (installed)
1	1-1/4 x 8-1/2 Bolt
2	1-1/4 hex nuts
1	Wheel mount plate
1	Large dia bearing
1	Small dia. bearing
1	Castle nut
1	Flat washer
1	Lower seal
1	Bearing dust cover

Bumper Components

<u>QTY</u>	<u>Description</u>
1	Rear bumper
10	M12X30 mm Hex Head Bolts
18	M12 Flat Washers
8	M12 Nuts
10	M12 Lock Washers

NOTE: Please read this information before installing. For installation on TJ model years **Drilling is recommended** for the installation of these bumpers. Although not required we recommend these additional mount points be utilized to ensure the strength of the bumper. We will not warranty any installations not utilizing these drill points. For correct installation follow these step by step instructions carefully. Please take care when installing this product to protect the finish and your investment.

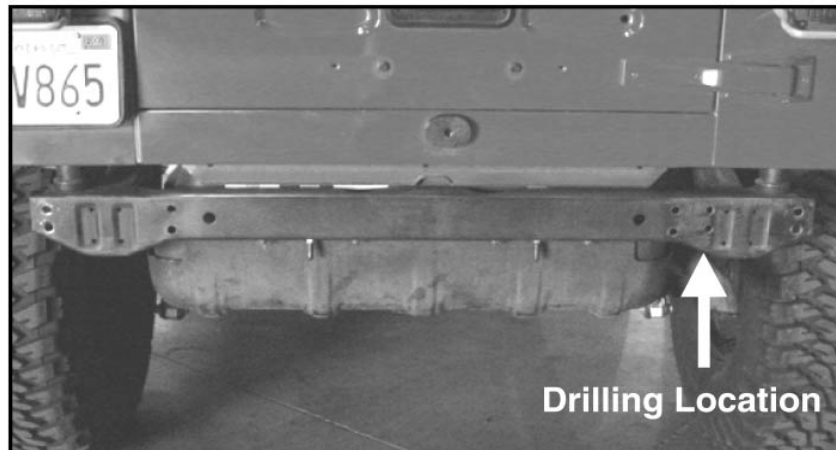
IMPORTANT INFORMATION

This product will accommodate up to a 35" Tire. Factory bumper and tire carrier mount will need to be removed. The 3rd brake light will need to be relocated. Location may vary due to tire size. Rampage now offers a universal rear brake light adapter part #86615. We recommend its use to maintain compliance with traffic laws.

BUMPER INSTALLATION INSTRUCTIONS

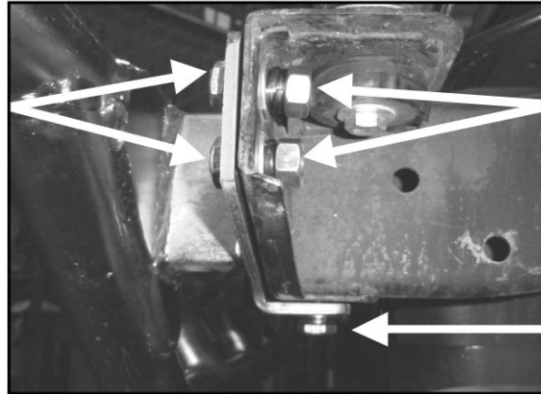
NOTE: Before installation temporarily install the bumper on the rear of the vehicle and use it as a guide to mark the required drill points shown in Fig. 1. Use a 7/16" drill bit to drill the holes in the frame. **CAUTION: Use extreme care when drilling these holes as the location is critical for proper installation. Also be sure to check the inside of the frame area for possible obstructions or hazards.**

Fig 1.



M12 x 30 hex head bolt with flat washer

Fig 2



M12 flat washer, lock washer and nut

Note location of lower bolt

- 1) With assistance from a helper, position bumper on rear of vehicle frame.
- 2) Secure bumper to frame using the included M12 x 30MM Hex head bolts, washers, lock washers and bolts. Do not tighten at this time.
- 3) Now install the remaining two M12 x 30 hex head bolts, washers, lock washers and bolts in the two holes on the bottom of the bumper. Fig. 2.
- 4) Tighten all fasteners.

Tire Carrier Installation Instructions

Note: Grease all bearings and pivot hardware with grease before final installation for smooth operation.

- 1) Assemble the pivot bearing as shown in figure 1 below. Be sure the arm swings freely and is secure before installing the dust shield (top cover). **Do not over tighten the bearings, if the arm binds at all back off the castle nut.**
- 2) Once the arm is installed check the operation of the latch assembly and adjust nylocks on clamp as necessary.

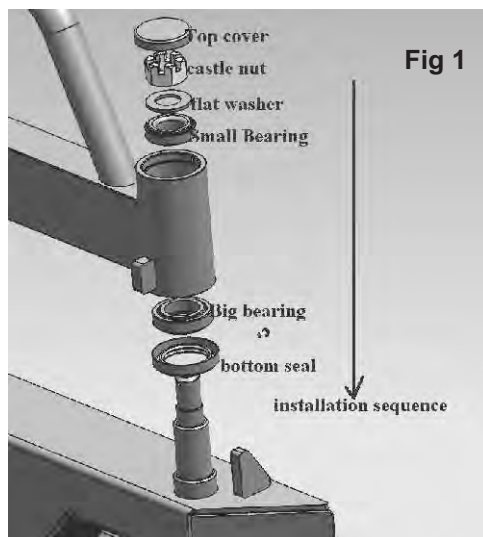


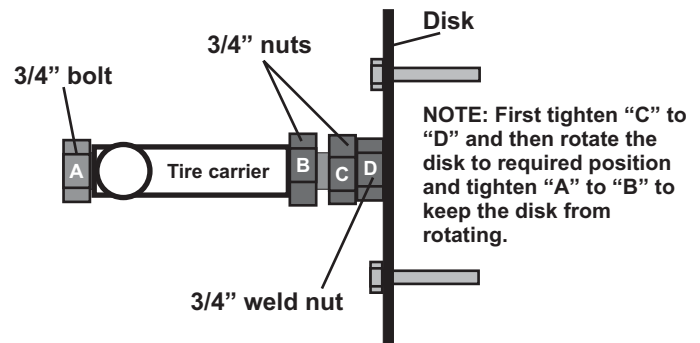
Fig 2



- 3) Locate the 1-1/4 x 8-1/2 bolt and place it through the top tube of the carrier as shown in Fig. 3. Install 1-1/4 nut and tighten. Install second 1-1/4 nut and leave loose at this time.
- 4) Measure your wheels. Measure the distance from the backpad of your wheels to the outside of the tire. Install the wheel plate on the bolt and adjust to this dimension as shown in fig.32. Tighten the second nut installed in the previous step against the plate to lock in place.



Fig 3



- 5) Check to make sure the tire is tight against the carrier. Fully tighten all hardware at this time.
- 6) Review your installation and open and close carrier to ensure proper alignment and latching.

Warranty Information

Rampage products, Inc. warrants to the original purchaser of any product it manufactures, will be free of defects in material or workmanship for a period of 1 year from date of purchase unless otherwise stated. Such obligations under this warranty shall be limited to the repair or replacement, at Rampage products discretion, of any assembly or parts which, upon examination by Rampage products, Inc. proves to be defective. All defective items must be returned with proof of purchase to Rampage products, Inc., freight prepaid. This warranty does not cover damage resulting from abuse, misuse, alteration, accident or damage in transit. Rampage products obligations under this warranty are limited to the aforementioned repair or replacement of warranty defects for which the return authorization has been received during the warranty period, and Rampage products, Inc. shall not be liable for any incidental or consequential damages arising from breach of this or any implied warranty.

Rampage Products, LLC 22420 Temescal Canyon Rd. Unit C, Corona, CA 92883-4919

Phone: (951) 277-4949 Fax: (951) 277-2295

Web: info@rampageproducts.net

Made in China