



www.skyjacker.com

REQUIRED TOOL LIST:

- Safety Glasses
- Metric / Standard Wrenches & Sockets
- Allen Wrenches
- Drill & Assorted Drill Bits
- Grinder / Cut Off Wheel
- Pipe Wrench
- Floor Jack
- Jack Stands
- Measuring Tape
- Torque Wrench

**07-11 Jeep Wrangler JK
4" & 6" Long Arm Suspension Lift
Installation Instructions**



Before beginning the installation, thoroughly & completely read these instructions & the enclosed driver's WARNING NOTICE. Affix the WARNING decal in the passenger compartment in clear view of all occupants. Please refer to the Parts List to insure that all parts & hardware are received prior to the disassembly of the vehicle. If any parts are found to be missing, contact SKYJACKER® Customer Service at 318-388-0816 to obtain the needed items. If you have any questions or reservations about installing this product, call SKYJACKER® Technical Assistance at 318-388-0816.

Make sure you park the vehicle on a level concrete or asphalt surface. Many times a vehicle is not level (side-to-side) from the factory & is usually not noticed until a lift kit has been installed, which makes the difference more visible. Using a measuring tape, measure the front & rear (both sides) from the ground up to the center of the fender opening above the axle. Record this information below for future reference.

Driver Side Front: _____

Passenger Side Front: _____

Driver Side Rear: _____

Passenger Side Rear: _____

IMPORTANT NOTES:

- The draglink must be adjusted to center the steering wheel before the vehicle is driven. Failure to do so will cause computer errors, odd handling characteristics, & poor performance.
- Replacement front & rear drive shafts are recommended, contact Skyjacker for more info.
- This lift is determined from the amount of lift to the front of the vehicle, while only lifting the rear to a position level with the front.
- If larger tires (10% more than the stock diameter) are installed, speedometer recalibration will be necessary. Contact your local Jeep dealer or an authorized dealer for details.
- After installation a qualified alignment facility is required to align the vehicle to factory specifications.

Component Box Breakdown:

Part #: JK40LA (4" Lift)

Item #	Description	Qty
JK40RBS-S	JK 4" REAR BUMP STOP BRKT	2
JKFTB-B	JK 4" FRONT TRK BAR BRKT	1
JK24RTB-B	JK 2-4" REAR TRK BAR BRKT	1
SBE126	DBL DISC END LINKS JEEP JK	1
SBE504	SWAY BAR LINK JEEP JK REAR	1

Item #	Description	Qty
ABSS3040	BUMP STOP SPACER 4" TALL	2
HB-JK4BL	HDWR BAG:JK 4" BRK LINE BRK	1
HB-JK40	HDWR BAG/ JK 4"	1
JKBRC15	JK RR TRK BAR BRACE DANA 44	1
JKBRC34	JK FRT TRK BAR BRACE D30&44	1

Part #: SBE126

Item #	Description	Qty
SBE102-L	SWAY BAR END LINK,FRT-SGL	2
SBE-E3	SWAY BAR END LK EYE	4
14X112SPIN	1/4 X 1 1/2 SNAPPER PIN	4

Item #	Description	Qty
HB-SBE126	HARDWARE BAG FOR SBE126	1
I-SBE120/124	INST SHEET - SBE120/124/320	1

Part #: SBE504

Item #	Description	Qty
SBE506-L	REAR,SWAY BAR END LK,SGL	2

Item #	Description	Qty
HB-SBE504	HARDWARE BAG FOR SBE504	1

Part #: JKBRC15

Item #	Description	Qty
JKBRC15-B	JK REAR TRK BAR BRACE D44	1
HB-JKBRC15	HARDWARE BAG FOR JKBRC15	1

Item #	Description	Qty
I-JKBRC15	INST SHEET:JK D44 TRK BRACE	1

Part #: JKBRC34

Item #	Description	Qty
JKBRC34-1	JK FRONT TRK BAR BRC D30/44	1
JKBRC34-2	JK FRT TRK BAR SUPP BRACE	1
JKBRC34-30	JK FRT TRK BAR BRACE D30	1

Item #	Description	Qty
JKBRC34-44	JK FRT TRK BAR BRACE D44	1
HB-JKBRC34	HARDWARE BAG FOR JKBRC34	1
I-JKBRC34	INST SHEET FOR JKBRC34	1

Hardware Bag Breakdown:

Part # HB-SBE126

Item #	Description	Qty
403712	ES22 SLEEVE/1.25" LONG	4
12X212BHCTB	1/2 2 1/2 BUTTON HEAD COARS	2

Item #	Description	Qty
12USSW	1/2 USS WASHER	4
12CTN	1/2-13 COARSE N/I LOCK NUT	2

Part # HB-SBE504

Item #	Description	Qty
HG58125	HOURLASS 5/8" X 1.25"	4
403712	ES22 SLEEVE/1.25" LONG	4
12X212BHCTB	1/2 2 1/2 BUTTON HEAD COARS	4

Item #	Description	Qty
12SAEW	1/2 SAE WASHER	4
12USSW	1/2 USS WASHER	4
12CTN	1/2-13 COARSE N/I LOCK NUT	4

Part # HB-JK40

Item #	Description	Qty
14X80MMB	14MM X 80 METRIC BOLT/ 10.9	1
14MMN	14MM NYLON LOCK NUT	1
12X114FTB	1/2 X 1 1/4 FINE THD BOLT	1
12SAEW	1/2 SAE WASHER	1
12FTN	1/2-20 FINE N/I LOCK NUT	1
38X4BHB	3/8 X 4 BUTTON HEAD BOLT	2
38SAEW	3/8 SAE WASHER	2
38CTN	3/8-16 COARSE N/I LOCK NUT	2
516X1FTB	5/16 X 1 FINE THRD BOLT	4
516SAEW	5/16 SAE WASHER	8

Item #	Description	Qty
516FTN	5/16" FINE THRD N/I LOCKNUT	4
716X1FTB	7/16 X 1 BOLT,FINE THD GRD8	1
716X212FTB	7/16 X 2 1/2 FINE THRD BOLT	2
716SAEW	7/16 SAE WASHER	5
716FTN	7/16-20 FINE N/I LOCK NUT	3
916X3FTB	9/16 X 3 FINE THREAD BOLT	1
916SAEW	9/16 SAE WASHERS	5
916FTN	9/16-18 NYLON INSERT LOCKNU	2
CS1625	CRUSH SLEEVE JKRTB	1
916X312FTB	9/16 X 3 1/2 FINE THRD BOLT	1

Part # HB-JK4BL

Item #	Description	Qty
JKBE4D	BRAKE LINE BRACKET	2
14X1FTB	1/4 X 1 FINE THRD BOLT	2

Item #	Description	Qty
14SAEW	1/4 SAE WASHER	4
14FTN	1/4" FINE THRD N/I LOCKNUT	2

Part # HB-JKBRC15

Item #	Description	Qty
516X1CTB	5/16 X 1 CRS THREAD BOLT	3
516XTFW	5/16" EXTRA THICK FLAT WASH	3

Item #	Description	Qty
516LW	5/16" GRADE 8 LOCK WASHER	3

Part # HB-JKBRC34

Item #	Description	Qty
516FTN	5/16" FINE THRD N/I LOCKNUT	3
516LW	5/16" GRADE 8 LOCK WASHER	3
516SAEW	5/16 SAE WASHER	9
516XTFW	5/16" EXTRA THICK FLAT WASH	3
516X1CTB	5/16 X 1 CRS THREAD BOLT	3

Item #	Description	Qty
516X1FTB	5/16 X 1 FINE THRD BOLT	3
716FTN	7/16-20 FINE N/I LOCK NUT	1
716SAEW	7/16 SAE WASHER	2
716X1FTB	7/16 X 1 BOLT,FINE THD GRD8	1

Component Box Breakdown:

Part #: JK60LA (6" Lift)

Item #	Description	Qty
BP50S	BUMP STOP WRANGLER-TJ	2
ABSS3040	BUMP STOP SPACER 4" TALL	2
JK40RBS-S	JK 4" REAR BUMP STOP BRKT	2
JKFTB6-B	JK FRT TRACK BAR BRKT 6-7"	1
JK6RTB-B	JK 6" REAR TRACK BAR BKT	1
SBE127	DBL DISC END LINKS 6" JK	1

Item #	Description	Qty
SBE507	END LINKS 6" JK REAR	1
JKBL60	FRT/REAR SET JK BRAKELINE	1
HB-JK60	HDWR BAG: 6" LONG ARM JK	1
JKBRC15	JK RR TRK BAR BRACE DANA 44	1
JKRBS10	JK POLY REAR BUMP STOP	2
JKBRC34	JK FRT TRK BAR BRACE D30&44	1

Part #: SBE127

Item #	Description	Qty
SBE103-L	SWAY BAR END LINK,FRT-SGL	2
SBE-E3	SWAY BAR END LK EYE	4

Item #	Description	Qty
14X112SPIN	1/4 X 1 1/2 SNAPPER PIN	4
HB-SBE126	HARDWARE BAG FOR SBE126	1

Part #: SBE507

Item #	Description	Qty
SBE507-L	REAR,SWAY BAR END LK,SGL	2

Item #	Description	Qty
HB-SBE504	HARDWARE BAG FOR SBE504	1

Part #: JKBL60

Item #	Description	Qty
JKBL60S	FRONT/REAR BRK LINE,6" JK	4
BE15	BRAKE LINE EXTENSIONS	4
3CCW	COPPER CRUSH WASHER, 3/8"	8

Item #	Description	Qty
BTIE	RED BOOT TIE	4
HC1	HOSE/HORSESHOE CLIP	4
I-BL	INSTRUCTIONS: BRAKE LINES	1

Part #: JKBRC15

Item #	Description	Qty
JKBRC15-B	JK REAR TRK BAR BRACE D44	1
HB-JKBRC15	HARDWARE BAG FOR JKBRC15	1

Item #	Description	Qty
I-JKBRC15	INST SHEET:JK D44 TRK BRACE	1

Part #: JKBRC34

Item #	Description	Qty
JKBRC34-1	JK FRONT TRK BAR BRC D30/44	1
JKBRC34-2	JK FRT TRK BAR SUPP BRACE	1
JKBRC34-30	JK FRT TRK BAR BRACE D30	1

Item #	Description	Qty
JKBRC34-44	JK FRT TRK BAR BRACE D44	1
HB-JKBRC34	HARDWARE BAG FOR JKBRC34	1
I-JKBRC34	INST SHEET FOR JKBRC34	1

Hardware Bag Breakdown:

Part # HB-SBE126

Item #	Description	Qty
403712	ES22 SLEEVE/1.25" LONG	4
12X212BHCTB	1/2 2 1/2 BUTTON HEAD COARS	2

Item #	Description	Qty
12USSW	1/2 USS WASHER	4
12CTN	1/2-13 COARSE N/I LOCK NUT	2

Part # HB-SBE504

Item #	Description	Qty
HG58125	HOURLASS 5/8" X 1.25"	4
403712	ES22 SLEEVE/1.25" LONG	4
12X212BHCTB	1/2 2 1/2 BUTTON HEAD COARS	4

Item #	Description	Qty
12SAEW	1/2 SAE WASHER	4
12USSW	1/2 USS WASHER	4
12CTN	1/2-13 COARSE N/I LOCK NUT	4

Part # HB-JK60

Item #	Description	Qty
14X80MMB	14MM X 80 METRIC BOLT/ 10.9	1
14MMN	14MM NYLON LOCK NUT	1
12X114FTB	1/2 X 1 1/4 FINE THD BOLT	1
12SAEW	1/2 SAE WASHER	1
12FTN	1/2-20 FINE N/I LOCK NUT	1
38X4BHB	3/8 X 4 BUTTON HEAD BOLT	2
38SAEW	3/8 SAE WASHER	2
38CTN	3/8-16 COARSE N/I LOCK NUT	2
516X1FTB	5/16 X 1 FINE THRD BOLT	4
516SAEW	5/16 SAE WASHER	8

Item #	Description	Qty
516FTN	5/16" FINE THRD N/I LOCKNUT	4
716X112FTB	7/16 X 1 1/2 BOLT,FINE THD	1
716X212FTB	7/16 X 2 1/2 FINE THRD BOLT	2
716SAEW	7/16 SAE WASHER	5
716FTN	7/16-20 FINE N/I LOCK NUT	3
916X3FTB	9/16 X 3 FINE THREAD BOLT	1
916SAEW	9/16 SAE WASHERS	5
916FTN	9/16-18 NYLON INSERT LOCKNU	2
CS1625	CRUSH SLEEVE JKRTB	1
916X312FTB	9/16 X 3 1/2 FINE THRD BOLT	1

Part # HB-JKBRC15

Item #	Description	Qty
516X1CTB	5/16 X 1 CRS THREAD BOLT	3
516XTFW	5/16" EXTRA THICK FLAT WASH	3

Item #	Description	Qty
516LW	5/16" GRADE 8 LOCK WASHER	3

Part # HB-JKBRC34

Item #	Description	Qty
516FTN	5/16" FINE THRD N/I LOCKNUT	3
516LW	5/16" GRADE 8 LOCK WASHER	3
516SAEW	5/16 SAE WASHER	9
516XTFW	5/16" EXTRA THICK FLAT WASH	3
516X1CTB	5/16 X 1 CRS THREAD BOLT	3

Item #	Description	Qty
516X1FTB	5/16 X 1 FINE THRD BOLT	3
716FTN	7/16-20 FINE N/I LOCK NUT	1
716SAEW	7/16 SAE WASHER	2
716X1FTB	7/16 X 1 BOLT,FINE THD GRD8	1

Component Box Breakdown:

Part #: JK46LA-SX (4" & 6" Lift

Item #	Description	Qty
JKLL46FD-SX-L	JK 4-6" FRT DRVR LONG ARM	1
JKLL46FP-SX-L	JK 4-6" FRONT PASS LONG ARM	1
JKLL46R2-SX-L	JK 4-6" REAR LWR LONG ARM	2
JKUL46F-SX-L	JK UPPER FRONT LINK 4-6"	2
JKUL46RSX-ASY	JK 4-6" REAR UPPER LINK ASSY	2
RR114X1R	NG ROD END 1 1/4"RIGHT HAND	4
RR34X58R	NG ROD END 3/4" RIGHT HAND	2
114RFTJN	1 1/4" RIGHT HAND JAM NUT	4
34RFTJN	3/4" RIGHT HAND JAM NUT	2
RR114-14	ROD END BUSHING 14MM ID	8

Item #	Description	Qty
JK46LAFLB-D	JK 4-6" LONG ARM F BKT-DRV	1
JK46LAFLB-P	JK 4-6" LONG ARM F BKT-PAS	1
JK46LARLB2-D	4-6" LONG ARM R-BRKT DRV	1
JK46LARLB2-P	4-6" LONGARM R-BRKT PASS	1
HB-JK6FLB	HDWR BAG:JK 6"FRT LK BRKT	1
HB-JK6RLB2	HDWR BAG:JK REAR LK BRK	1
HB-JKULF-SX	HDWR BAG:JK UPPER FRT LK	1
HB-LL175	HDWR BAG/ LWR LINK 1.75"ID	1
HB-JKULR-SX	HDWR BAG:JK UPR REAR LK	1
I-JK4601	INST SHEET:JK LONG ARM KT	1

Hardware Bag Breakdown:

Part # HB-JK6FLB

Item #	Description	Qty
916X112FTB	9/16 X 1 1/2 FINE THRD BOLT	2
916SAEW	9/16 SAE WASHERS	4
916FTN	9/16-18 NYLON INSERT LOCKNU	2

Item #	Description	Qty
12X112FTB	1/2 X 1 1/2 FINE THRD BOLT	2
12SAEW	1/2 SAE WASHER	4
12FTN	1/2-20 FINE N/I LOCK NUT	2

Part # HB-JK6RLB2

Item #	Description	Qty
12X4FSB	1/2 X 4 FLAT SOCKET BOLT	1
12X412FSB	1/2 X 4 1/2 FLAT SOCKET BLT	1
12X412FTB	1/2 X 4 1/2 FINE THD GRD. 8	2
12CTN	1/2-13 COARSE N/I LOCK NUT	2

Item #	Description	Qty
12FTN	1/2-20 FINE N/I LOCK NUT	2
12SAEW	1/2 SAE WASHER	6
CS2700	JK REAR BRKT CRUSH SLEEVE	2

Part # HB-JKULF-SX

Item #	Description	Qty
12MMX80B	12 X 80 METRIC BOLT/10.9	2
12SAEW	1/2 SAE WASHER	4

Item #	Description	Qty
12MMN	12 MM NUT (METRIC)	2
RR34-12	ROD END BUSHING 12MM ID	4

Part # HB-LL175

Item #	Description	Qty
2617	BUSHING DGE RAM LWR LNK	8
LS2645	LINK SLEEVE 2.645" LOWER	4

Item #	Description	Qty
ZF316	ZERK FITTING ALEMITE, 3/16"	4

Part # HB-JKULR-SX

Item #	Description	Qty
LS2313	LINK SLEEVE 2.313" UPPER RR	2
2619	BUSHING JK UPPER REAR LINK	4

Item #	Description	Qty
ZF316	ZERK FITTING ALEMITE, 3/16"	2
RR34-563	ROD END BUSHING .563 ID	4

Front Installation:

1. Park the vehicle on flat, level ground & set the emergency brake.
2. Raise the front of the vehicle & support the frame rails using jack stands.
3. Disconnect the front sway bar end links using a 18mm socket. Disconnect the front track bar using a 21mm socket. (See Photo # 1)
4. If installing a Skyjacker steering stabilizer Part # 7003, remove the OEM steering stabilizer using a 18mm socket. (See Photo # 2)
5. Disconnect the front shocks using a 18mm socket. Remove the front tires / wheels & remove the OEM front coils. (See Photo # 3) Remove the OEM front shocks.
6. Locate the OEM lower control arm mount on the frame. **Note:** It will be necessary to modify these mounts to allow for the installation of the Skyjacker lower control arm brackets. Remove the OEM automatic transmission skid plate & remove the lower control arm, one side at a time.
7. Using a grinder, remove the weld attaching the inner mounting plate to the frame. All that will be left is the single mounting plate under the frame. (See the Arrow in Photo # 4)



8. Using a transmission jack, support the rear of the transfer case. Disconnect the transmission from the OEM cross member. Raise the transmission / transfer case approx. 2". This will allow easier access around the exhaust to install the new Skyjacker front control arm brackets.



9. Remove the inner most mounting bolt on the transmission cross member using a 18mm socket. (See Photo # 5)

10. Place the OEM cross member bolt through the back of the new Skyjacker bracket & install. (See Photo # 6)

11. Install the OEM skid plate bolt that was removed in Step # 6. (See Photo # 7)

12. Install the supplied 9/16" x 1 1/2" fine thread bolt, washers, & nut at the OEM control arm position. (See Photo # 8)

13. With all bolts tight, mark & drill the new location on the outside of the frame using a 1/2" drill bit. (See Photo # 9) Once drilled, install the 1/2" x 1 1/2" fine thread bolt, washers, & nut. **Note:** It may be necessary to remove the lower bolt first to allow the installation of the new outer frame bolt. **Note:** The passenger side control arm can be installed along with the bracket. If not, it will be necessary to raise the transmission again later to install the control arm.



14. Locate the new Skyjacker front bump stop. Place the bump stop on the center of the bump stop pad located on the front axle. Mark & drill using a 25/64" drill bit. (See Photo # 10)



6" Kits: Remove the upper OEM bump stop & reinstall the new Skyjacker poly bump stop.



15. Place the bump stop inside the coil spring & install the coil spring. Attach the bump stop to the axle using the 3/8" X 4" button head bolts with one washer under the nut. (See Photo # 11)
16. Locate the OEM front track bar mount & place the new Skyjacker relocation bracket inside the OEM mount. Drill the outer OEM holes all the way through the rearward plate using a 7/16" drill bit. (See Photo # 12) Attach the bracket at the outer two locations using the 7/16" x 2 1/2" fine thread bolts, washers, & nuts. Attach bracket at the OEM location using the OEM bolt. Let the weight of the frame down onto the new Skyjacker coils & attach track bar to new bracket using the 14 x 80mm bolt, washers, & nut.
17. Remove the three upper left differential cover bolts. (See Photo # 13)
18. Hold the new Skyjacker differential bracket (D30 or D44) up to the differential. (See Photo # 14) Place the thick 5/16" washers between the new differential bracket & differential. (See Arrow in Photo # 15) Attach using the 5/16" x 1" coarse thread bolts, flat washers, & lock washers. (See Photo # 15) **Note:** Do not tighten at this time.
19. Attach the new Skyjacker rear brace to the upper rear mounting bolt of the track bar bracket. (See Photo # 16)



Photo # 11



Photo # 12

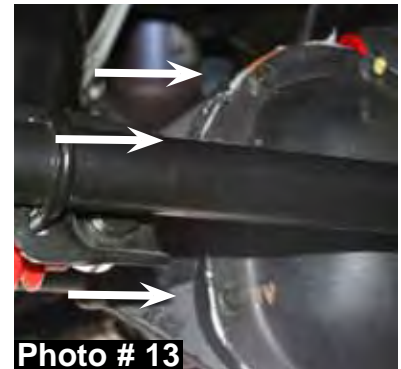


Photo # 13



Photo # 15



Photo # 14



Photo # 16

20. Install the new Skyjacker support brace between the new differential bracket & rear mounting bolt of the track bar bracket using the original 14mm hardware, 5/16" x 1" fine thread bolts, flat washers, & nuts. (See Photo # 17 & # 18)
Note: Do not tighten at this time.



21. Clamp the new rear brace to the OEM spring perch & drill through the new rear brace & OEM spring perch using a 7/16" drill bit. Install the 7/16" x 1" fine thread bolt, washers, & nut to the perch & tighten at this time. (See Photo # 19)



22. Once the 7/16" hardware has been tightened, complete the install by tightening all remaining 14mm & 5/16" hardware.

23. Assemble the new Skyjacker sway bar end links using the supplied steel sleeves. Attach the eyes using the 1/4" snap pins. Attach the end link to the axle using the OEM hardware. Attach to the sway bar using the 1/2" x 2 1/2" button head bolt & use one large USS washer under the nut. Re-attach front drive shaft. (See Photo # 20)

24. If installing a Skyjacker steering stabilizer Part # 7003, install at this time. (See Photo Below).



25. Locate the new Skyjacker lower control arms. (Fronts are shorter than the rear) Install the supplied poly bushings & sleeves. It is recommended to apply a thin coat of lithium grease to the bushings & sleeves prior to installation. Be sure to install the 1/4" drive in grease fittings. These are easily driven in with the use of a 1/4" socket. Install the supplied 1 1/4" rod end & jam nut. Be sure to install the 14mm bolt inserts.



26. The recommended pre-set length of the control arms are:

4" Measurements

Lower Front should be set @ 31 1/4"

Lower Rear should be set @ 34 7/8"

Upper Front should be set @ 18 3/8"

Upper Rear should be set @ 18"

6" Measurements

Lower Front should be set @ 32"

Lower Rear should be set @ 35"

Upper Front should be set @ 18 3/4"

Upper Rear should be set @ 18 1/16"

The final length will need to be set by a qualified alignment facility.

27. Install the lower control arms using the OEM hardware. (See Photo # 21 & # 22) Install the arms with the bend up & towards the middle of the vehicle. Once installed, tighten the jam nut. Be sure that once tightened, the rod end sits square inside the mount. With the lower arms installed, lower the transmission & re-attach to the OEM cross-member.

28. With the lower control arms installed, remove the OEM upper arms. It will be necessary to cut off the OEM bolt at the frame due to it hitting the exhaust when trying to remove. Install the new Skyjacker upper arms using the same process as the lower. Install using the 12mm I.D. bolt inserts. Attach to the frame using the 12mm x 80mm bolts, washers, & nuts. (See Photo # 23)

29. **6" Kits:** Remove the front OEM brakelines & install the new Skyjacker stainless steel braided lines. Attach to the frame using the 90 degree brackets supplied. Attach using the OEM hardware. (See Photo # 24) Install the new Skyjacker front shocks.

30. Disconnect the drag link from the OEM pitman arm. Using a pitman arm puller, remove the OEM pitman arm & install the new Skyjacker pitman arm. (See Photo # 25) Install the tires / wheels & lower the vehicle to the ground.



Photo # 21



Photo # 22



Photo # 23



Photo # 24



Photo # 25

Rear Installation:

31. Raise the rear of the vehicle & properly support the frame rails using jack stands. Remove the OEM rear shocks using a 16mm socket. (See Photo # 26)
32. Disconnect the rear track bar bracket from the axle using a 21mm socket. (See Photo # 27) Disconnect the rear sway bar end links using a 18mm socket.
33. Disconnect the ABS line from the frame & disconnect the brake line from the frame. (See Photo # 28) Lower the axle down & remove the OEM rear coils.
34. Place the new Skyjacker rear track bar relocation bracket over the OEM bracket on the axle. With the bracket seated flush, clamp the bracket in place (mark using a center punch) & drill the new center mounting holes using a 15/32" drill bit. (See Photo # 29)
35. Install the supplied 7/16" x 1" fine thread bolt & nut. Use one 7/16" washer under the nut. (See Photo # 30)
36. It will be necessary to drill through the driver side bottom of the OEM bracket & through the new Skyjacker bracket. Drill using a 17/32" drill bit. Once drilled, install the supplied 1/2" x 1 1/4" fine thread bolt & nut. Use one washer under the bolt. Install the 9/16" x 3 1/2" bolt, washers, & nut at the bottom location being sure to use the supplied crush sleeve. (See Arrow in Photo # 31)
37. Remove the three upper left differential cover bolts. (See Photo # 32)



Photo # 26



Photo # 27



Photo # 28

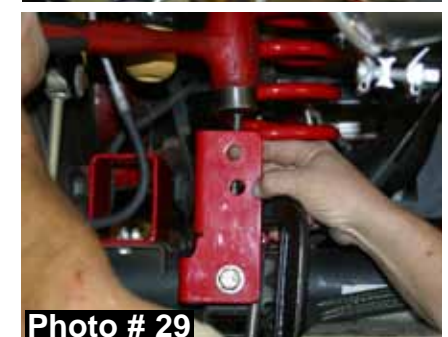


Photo # 29

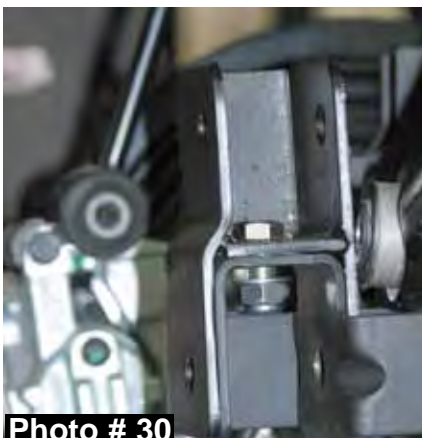


Photo # 30



Photo # 31

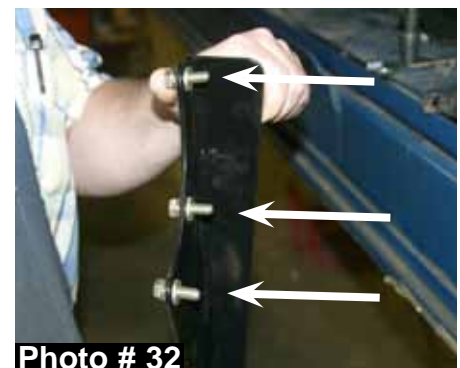


Photo # 32

38. Attach the new track bar brace to the differential using the 5/16 x 1" coarse thread bolts. **Do not tighten at this time.** The end of the bracket should be between the Skyjacker track bar bracket & the coil spring. Use the thick, gold plated 5/16" washer between the bracket & the differential cover. Use a 5/16" lock washer under the head of each bolt. (See Photo # 33 & # 34) **Do not tighten at this time.**



39. Attach the brace to the front side of the Skyjacker track bar bracket between the bracket & the coil spring. **Do not tighten at this time.** (See Photo # 35)

40. Torque the 5/16" bolts at the differential & the 14mm bolt on the track bar to OEM specifications.

41. **6" Kits:** Remove the upper OEM bump stops & install the new Skyjacker bump stop. Install the new Skyjacker Softride® rear coils. (See Photo # 36) Be sure to re-use the upper OEM rubber isolator pad.



42. Attach the new Skyjacker rear bump stops to the OEM location on the axle using the 5/16" x 1" fine thread bolts, washers, & nuts supplied. (See Photo # 37) Be sure to install the bump stop so that the angled end is towards the rear.

43. Let the weight of the vehicle onto the coil springs. Install the new Skyjacker sway bar end links using the supplied 5/8" hourglass bushings & steel sleeves. Attach using the 1/2" x 2 1/2" button head bolts & nuts. One large USS washer will be used under the head of each bolt with the smaller SAE washer under the nut. (See Photo # 37)



44. Attach the track bar to the new Skyjacker bracket using the 9/16" x 3" fine thread bolt, washer, & nut. See the included track bar brace & instructions at this time. **4" Kits:** Be sure to use the upper mounting location on the new Skyjacker bracket. One washer will be used under the head of the bolt. Be sure to install the bolt from the front side toward the rear.



45. **6" Kits:** Remove the OEM rear brakelines & install the new Skyjacker brake lines. Install using the 90 degree bracket supplied. The bracket will attach to the OEM location on the frame using the OEM hardware. (See Photo # 38A) **4" Kits:** Will relocate the OEM brake line on the frame using the brackets & 1/4" hardware supplied. Position the brackets so the bend is under the frame. Make sure there is space between the hard brake line & the frame rail. (See Photo # 38B)
46. Remove the driver side lower control arm & disconnect the exhaust behind the catalytic converter. **Note:** It will be necessary to disconnect the exhaust hangers to allow for drilling of the mounting hole inside the frame rail.
47. Using a cut off wheel, cut the welds that attach the OEM lower control arm brackets to the frame & remove 1" from the bottom of each side of the body mount bracket. (See Photo # 39 & Arrows # 40) Once removed, grind the frame smooth.
48. Locate the new Skyjacker lower control arm brackets & crush sleeves. Install the crush sleeve at the OEM location in the frame. (See Photo # 41)
49. Install the new control arm bracket on the driver side using the 1/2" x 4 1/2" fine thread bolt, washers, & nut. (See Photo # 41)
50. With the bracket seated up flush against the frame rail, mark the front mounting locations on both the inside & outside of frame rail. (See Photo # 42)



Photo # 38A



Photo # 38B



Photo # 39



Photo # 40



Photo # 41

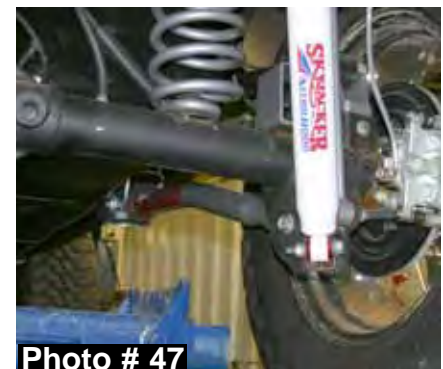


Photo # 42

51. Lower the bracket & drill the mounting location from each side of the frame rail using a 1/2" drill bit. (See Photo # 43)
52. Once drilled, install the supplied 1/2" x 4 1/2" fine thread bolt, washers, & nut. (See Photo # 44)
53. Repeat this process on the passenger side. **Note:** It will be necessary to disconnect the drive shaft & remove the fuel tank to allow access to the frame. Attach the passenger side bracket using the 1/2" x 4" counter sunk bolt for mounting the rear of the new bracket & the 1/2" x 4 1/2" counter sunk bolt for mounting the front of the new bracket. The bolts will install from the inside of the frame rail. (See Photo # 45) Use one washer & nut on the outside of the frame. Once installed, reinstall the fuel tank & drive shaft.
54. Install the new Skyjacker lower control arms using the same process as the front arms. (Installing the arms with the bend up & towards the middle of the vehicle) (See Photo # 46)
55. Remove the upper rear arms & install the new Skyjacker arms. (Install the arms with the offset bend towards the inside of the vehicle)
56. Install the new Skyjacker shocks, tires / wheels, & lower the vehicle to the ground. (See Photo # 47)

FINAL NOTES:

- * **The draglink must be adjusted to center the steering wheel before the vehicle is driven. Failure to do so will cause computer errors, odd handling characteristics, & poor performance.**
- * After the installation is complete, double check that all nuts & bolts are tight.
- * Check to ensure there is adequate clearance between all rotating, mobile, & fixed members. Check clearance between the inner side wall of the tires.
- * Ensure there is adequate clearance between exhaust, brake lines, fuel lines, fuel tank, floor board, & wiring harnesses. Check the steering gear for interference & proper working order. Inspect brake lines for damage & adequate clearance. Test the brake system.



- * With the vehicle on the ground, cycle the steering lock to lock & inspect the steering, suspension, drive line, & brake line systems for proper operation, tightness, & adequate clearance.
- * Have the headlights re-adjusted to the proper settings.
- * Re-alignment is necessary. Have a qualified alignment center re-align the vehicle to the OEM specifications.

<u>TORQUE SPECIFICATIONS</u>					
<u>INCH SYSTEM</u>			<u>METRIC SYSTEM</u>		
Bolt Size	Grade 5	Grade 8	Bolt Size	Class 8.8	Class 10.9
5/16	15 FT LB	20 FT LB	6MM	5 FT LB	9 FT LB
3/8	30 FT LB	35 FT LB	8MM	18 FT LB	23 FT LB
7/16	45 FT LB	60 FT LB	10MM	32 FT LB	45 FT LB
1/2	65 FT LB	90 FT LB	12MM	55 FT LB	75 FT LB
9/16	95 FT LB	130 FTLB	14MM	85 FT LB	120 FT LB
5/8	135 FT LB	175 FT LB	16MM	130 FT LB	165 FT LB
3/4	185 FT LB	280 FT LB	18MM	170 FT LB	240 FT LB

- The above specifications are not to be used when the bolt is being installed with a bushing.

Seat Belts Save Lives, Please Wear Your Seat Belt!



**Jesus Forgives,
Rocks Don't**

Jesus Christ Died For You.

John 3:16

For God so loved the world that He gave His only Son, so that everyone who believes in Him should not perish, but have everlasting life.
Romans 3:23

For all have sinned; all fall short of God's glorious standard.
Ephesians 2:8

God saved you by his special favor when you believed. And you can't take credit for this; it is a gift from God.
Psalms 18:2

The Lord is my Rock, my fortress, and my savior; my God is my Rock, in whom I find protection. He is my shield, the strength of my salvation, and my stronghold.
Romans 10:9-10

That if you shall confess with thy mouth the Lord Jesus, and shall believe in your heart that God hath raised him from the dead, you shall be saved. For with the heart man believeth unto righteousness; and with the mouth confession is made unto salvation.

Pray This Simple Prayer:
God, I come to You admitting I have sinned against You and I need you to take control of my life. The Bible says anyone who calls on the name of the Lord will be saved. I am calling on You, Jesus. I ask that You come live in my heart and be the Lord over my life today. I do believe You died on the cross for me and came back to life to give me life! Thank You, Lord Jesus for a new life in You!

Now, go and tell somebody about your new life in Jesus, get a Bible, begin to read it, and go to a Bible believing church.

If you would like someone to pray with you, call Kenneth Copeland Ministries anytime at 800-600-7395.

To listen to commercial free Christian radio on the web, go to www.887fm.org

Jesús murió por ti.

Juan 3:16

"Porque tanto amó Dios al mundo, que dio a su Hijo unigénito, para que todo el que cree en él no se pierda, sino que tenga vida eterna."
Romanos 3:23

"Pues todos han pecado y están privados de la gloria de Dios."
Efesios 2:8

"Porque por gracia ustedes han sido salvados mediante la fe; esto no procede de ustedes, sino que es el regalo de Dios."
Salmos 18:2

"El Señor es mi roca, mi amparo, mi libertador; es mi Dios, el peñasco en que me refugio. Es mi escudo, el poder que me salva, ¡mi más alto escondite!"
Romanos 10:9-10

"9 Que si confi esas con tu boca que Jesús es el Señor, y crees en tu corazón que Dios lo levantó de entre los muertos, serás salvo. 10 Porque con el corazón se cree para ser justifi cado, pero con la boca se confi esa para ser salvo."

Ahora dí esta simple oración:
Dios, vengo a Ti y admito que he pecado contra Ti, necesito que tomes el control de mi vida. La Biblia dice que todo aquel que invoca el nombre del Señor escapará con vida. En este momento yo clamo ante Ti, Jesús; te pido que vengas a vivir en mi corazón y que tomes el control de mi vida. ¡Yo creo que tu moriste en la cruz y resucitaste para darme vida! ¡Gracias Señor Jesús, por una nueva vida que tengo en Ti! Amen.

Ahora ve y dile a alguien sobre la nueva vida que tienes en Cristo. Compra una Biblia y empieza a leerla. Busca una Iglesia que cree en la Biblia y hazte parte de esa Iglesia.

Si te gustaría orar con alguien, puedes llamar a este número 800-600-7395

Puedes ir a este sitio de Internet para escuchar música Cristiana sin anuncios, www.887fm.org

Check out our favorite ministries at:

www.innministries.org

www.familychurch.org

www.kcm.org

