



97-06 Jeep TJ Wrangler Adjustable Rear Track Bar Installation Instructions

www.skyjacker.com

REQUIRED TOOL LIST:

- Safety Glasses
- Metric / Standard Wrenches & Sockets
- Tape Measure
- Torque Wrench



Before beginning the installation, thoroughly & completely read these instructions & the enclosed driver's WARNING NOTICE. Affix the WARNING decal in the passenger compartment in clear view of all occupants. Please refer to the Parts List to insure that all parts & hardware are received prior to the disassembly of the vehicle. If any parts are found to be missing, contact SKYJACKER® Customer Service at 318-388-0816 to obtain the needed items. If you have any questions or reservations about installing this lift kit, call SKYJACKER® Technical Assistance at 318-388-0816.

Kit Box Breakdown:

Part #: RTBA168

| ITEM# | DESCRIPTION | QTY |
|------------|-----------------------------|-----|
| RTBA168-B | REAR TRACK BAR TJ 1 HEIM | 1 |
| HB-RTBA168 | HDWR BAG: REAR TRACK BAR TJ | 1 |
| I-RTBA168 | INSTRUCTION FOR RTBA168 | 1 |

Hardware Bag Breakdown:

HB-RTBA168 **HARDWARE BAG FOR JKBRC15**

| ITEM# | DESCRIPTION | QTY |
|------------|-----------------------------|-----|
| HD34X34DTB | H.DUTY 3/4ROD END/DGE T-BAR | 1 |
| 34RFTJN | 3/4" RIGHT HAND JAM NUT | 1 |
| TJDLB | TJ DRAG LINK BUSHING,1.125" | 2 |
| 2888 | BUSHING JEEP TRACK BAR | 2 |
| TBS1625 | .625"ODX .5"IDX1.625"SLEEVE | 1 |
| 12X3FTB | 1/2 X 3 FINE THREAD BOLT | 2 |
| 12FTN | 1/2-20 FINE N/I LOCK NUT | 2 |
| 12SAEW | 1/2 SAE WASHER | 4 |

INSTALLATION:

1. Park the vehicle on level ground & chock the front & rear tires.
2. Remove the OEM track bar bolt from the lower axle mounting location. If needed, attach a ratchet strap between the frame & the differential to take the load off of the lower track bar bolt.

3. Remove the OEM track bar bolt from the upper frame mounting location.
4. Remove OEM track bar.
5. Install the two polyurethane bushings & sleeve into the eyelet end of the new Skyjacker adjustable track bar. **Note:** Apply a light coat of grease to the two polyurethane bushings & sleeve before installation. (See Photo # 1)
6. Thread the jam nut onto the new Skyjacker rod end & install the rod end into the threaded end of the new Skyjacker adjustable track bar. (See Photo # 2)
7. Install the fixed end of the new Skyjacker adjustable track bar with the bend facing upwards to the upper track bar mounting location, using the 1/2" x 3" bolt, two 1/2" washers & 1/2" nut. **Do not tighten at this time.** (See Photo # 3)
8. Using a tape measure, check the vehicle to make sure the body is centered over the tires & adjust the rod end to align with the lower track bar mounting location.
9. Insert the two stepped spacers into the new Skyjacker rod end & install to the lower track bar mounting location, using the 1/2" x 3" bolt, two 1/2" washers & 1/2" nut. (See Photo # 2)
10. Torque the 1/2" bolt & 1/2" nut at the upper & lower track bar mounting locations to OEM specifications, using a 3/4" socket & wrench.



Photo # 1



Photo # 2

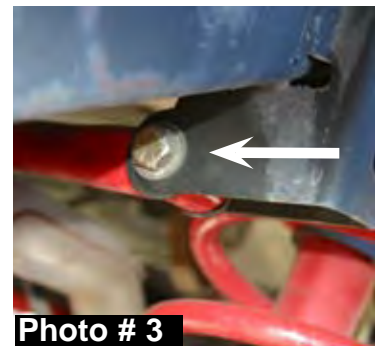


Photo # 3

TORQUE SPECIFICATIONS

| INCH SYSTEM | | | METRIC SYSTEM | | |
|-------------|-----------|-----------|---------------|-----------|------------|
| Bolt Size | Grade 5 | Grade 8 | Bolt Size | Class 8.8 | Class 10.9 |
| 5/16 | 15 FT LB | 20 FT LB | 6MM | 5 FT LB | 9 FT LB |
| 3/8 | 30 FT LB | 35 FT LB | 8MM | 18 FT LB | 23 FT LB |
| 7/16 | 45 FT LB | 60 FT LB | 10MM | 32 FT LB | 45 FT LB |
| 1/2 | 65 FT LB | 90 FT LB | 12MM | 55 FT LB | 75 FT LB |
| 9/16 | 95 FT LB | 130 FT LB | 14MM | 85 FT LB | 120 FT LB |
| 5/8 | 135 FT LB | 175 FT LB | 16MM | 130 FT LB | 165 FT LB |
| 3/4 | 185 FT LB | 280 FT LB | 18MM | 170 FT LB | 240 FT LB |

• The above specifications are not to be used when the bolt is being installed with a bushing.

Seat Belts Save Lives, Please Wear Your Seat Belt.

Part #
RTBA168



I-RTBA168