



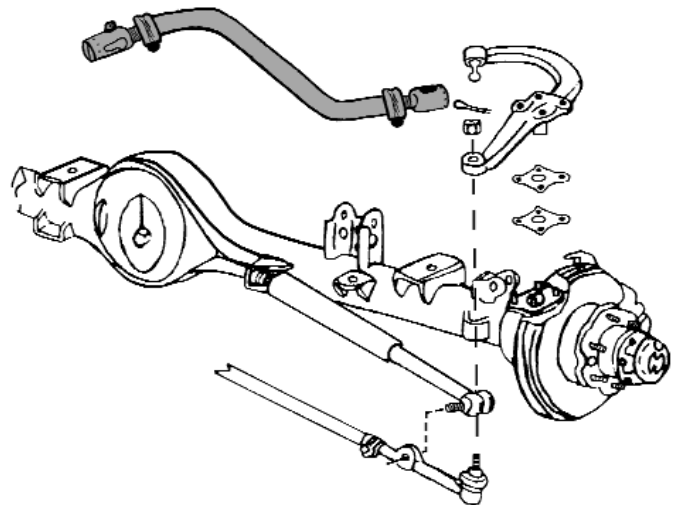
**1979-1985 Toyota  
Pick-Up and 4-Runner 4WD  
Offset / Adjustable Drag Link  
Part # TDL5**

**Installation Instruction:**

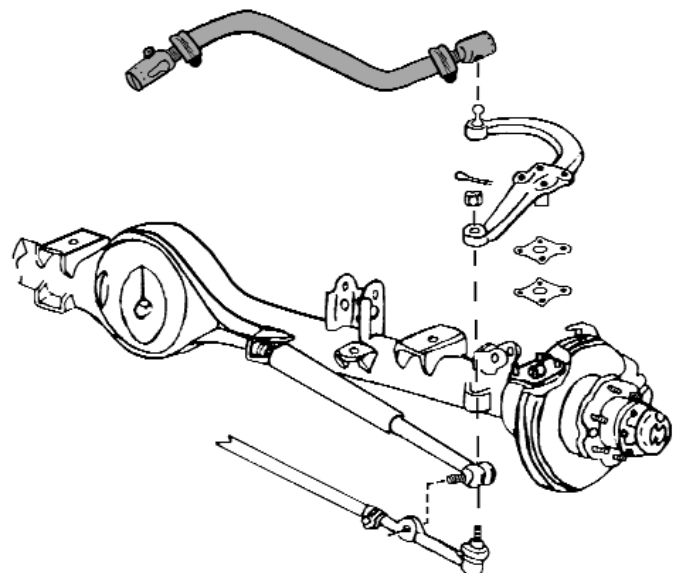
1. Park vehicle in a straight forward position. Set the emergency brake and block the rear tires.
2. Raise the front of the vehicle using floor jack and place jack stands underneath each end of the front axle. Ease vehicle onto jack stands and remove driver side tire.
3. On the drag link, remove the cotter pin and plug on each end and then remove from vehicle.
4. While counting the number of rotations or revolutions each way, turn the steering wheel all the way to the left then turn the wheel all the way back to the right. Now turn the steering wheel back to the left and stop halfway so that the wheel is centered. Now the left and right turning radius should be even and the steering wheel cross bars should be in the correct positions.
5. Be sure that the steering arm is pointing straight ahead. (this can be checked by looking at where the tie rod hooks up to the end of the steering arm. This end of the steering arm should be pointing straight ahead.) Now everything is properly positioned to determine the needed drag link length or adjustment.
6. Now adjust each end of the drag link accordingly, but be sure to adjust evenly (do NOT make all the adjustment on only one end of the drag link.) Tighten bolts on clamps against drag link tubing on each end.
7. Tighten the plug and reinstall the cotter pin on each end of the drag link where it connects to the pitman arm and steering arm. Now each end should be greased.

**Seat Belts Save Lives, Please Wear Your Seat Belt.**

Note: On 5" lifts, the draglink will install as shown. Same as factory.



Note: On 7" and above lift heights, the ball joint on the end of the steering arm will have to be modified for accurate steering geometry. Remove the ball joint on the end of the steering arm by grinding off the weld on the bottom side. Press the ball joint out. Install the ball joint back into the steering arm from the opposite side so that the ball joint end is facing up. (See Illustration). **The ball joint then MUST be Mig-Welded to the steering arm.** Welding must be done by a certified welder.



## JESUS CHRIST DIED FOR YOU

### **John 3:16**

For God so loved the world that He gave His only Son, so that everyone who believes in Him should not perish, but have everlasting life.

### **Romans 3:23**

For all have sinned; all fall short of God's glorious standard.

### **Psalms 18:2**

The Lord is my Rock, my fortress, and my savior; my God is my Rock, in whom I find protection. He is my shield, the strength of my salvation, and my stronghold.

### **STEPS TO ACCEPTING JESUS CHRIST AS YOUR PERSONAL SAVIOUR**

God, I come to You admitting I have sinned against You and I need you to take control of my life. The Bible says anyone who calls on the name of the Lord will be saved. I am calling on You, Jesus. I ask that You come live in my heart and be the Lord over my life today. I do believe You died on the cross for me and came back to life to give me life!

Romans 10:9-10 says that if I confess with my mouth that Jesus is Lord and believe in my heart that God raised Him from the dead, I will be saved. Because it is by believing in your heart that you are made right with God, and it is by confessing with your mouth that you are saved.

Thank You, Lord Jesus for a new life in You!  
Now, go and tell somebody about your  
new life in Jesus.

