



**Installation Instructions:**  
***Winch Plate (Part# SB2804)***  
***2007-2010 Jeep JK***

***NOTE: Carefully read entire instructions thoroughly before attempting to assemble and/or install this product. These steps are in conjunction with vehicles with the O.E.M. front bumper. Similar steps can be used with other after-market bumpers.***

<b><u>Parts Included:</u></b>	<b><u>Qty</u></b>
<b>92-7058 Winch Plate</b>	<b>1</b>
<b>92-7061 Frame Mount: Drvr</b>	<b>1</b>
<b>92-7062 Frame Mount: Pass</b>	<b>1</b>
<b>90-6779 Hardware Pack: Winch Plate</b>	<b>1</b>
<b>1/2" X 1" Hex Bolt</b>	<b>4</b>
<b>1/2" X 1 1/4" Hex Bolt</b>	<b>6</b>
<b>1/2" Stover Nut</b>	<b>10</b>
<b>1/2" Hardened Flat Washer</b>	<b>20</b>

### **Installation:**

**STEP 1:** Unbolt and remove the factory front bumper and hardware from the vehicle.

***NOTE: Be sure to unclip the factory fog light wiring harnesses if equipped***

**STEP 2:** Loosely assemble the (3) main parts (**92-7058 winch plate, 92-7061 frame mount drvr** and **92-7062 frame mount pass**) using the supplied (6) 1/2" X 1 1/4" bolts and hardware. Fig. A & B

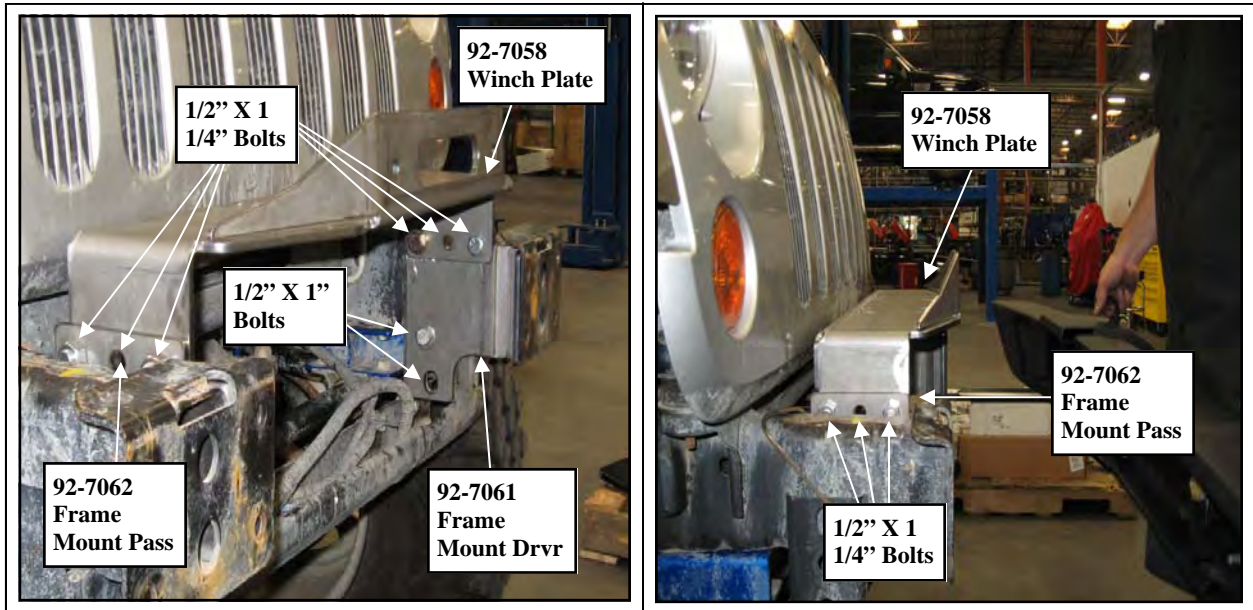
**STEP 3:** Slide the unit into place between the frame rails. Align the front bolt holes and clamp the assembly in place. Fig. A & B

**STEP 4:** Insert the supplied (4) 1/2" X 1" bolts and hardware in the lower frame mount holes. Fig. A & B

**For Technical Support/Warranty Information please call 310-762-9944**



## Installation Instructions: Winch Plate (Part# SB2804) 2007-2010 Jeep JK



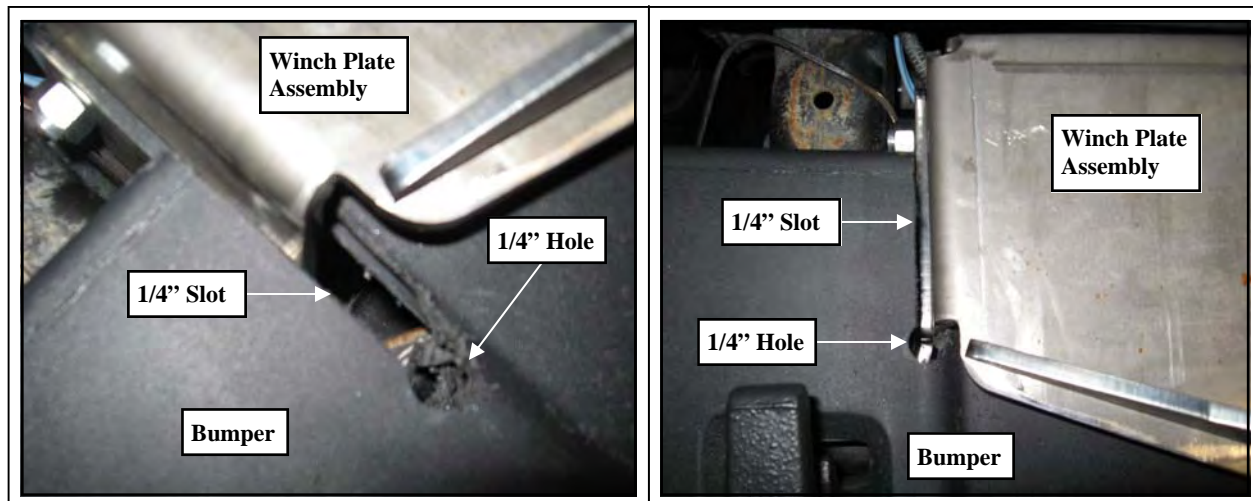
(Fig. A)

(Fig. B)

**STEP 5:** Be sure that all (4) front mounting holes are centered and tighten the (10) 1/2" bolts to 80 ft./lbs. Once the bolts are torqued you can remove the clamps. Fig. A & B

**STEP 6:** Find and mark the center of the bumper. Measure 12 7/8" in each direction and mark the bumper. Measure in 2 3/4" from the rear edge of the bumper at each previously applied outer mark and center punch the bumper for drilling. Fig. C & D

**STEP 7:** Drill the (2) previously applied drill marks using a 1/4" drill bit. Using a suitable cutting tool, (abrasive cutoff wheel, air saw, etc.) cut from the edge of the bumper to the previously drilled holes, to create a 1/4" slot. Fig. C & D



(Fig. C)

(Fig. D)

For Technical Support/Warranty Information please call 310-762-9944



**Installation Instructions:**  
***Winch Plate (Part# SB2804)***  
***2007-2010 Jeep JK***

- STEP 8:** Check fit the previously cut slots in the bumper by temporarily installing the bumper to the vehicle. If the slots are unsatisfactory then additional trimming will be necessary. Fig. C & D
- STEP 9:** Install the winch to the winch plate according the manufacturers instructions. Torque winch hardware according to manufacturers specifications.
- STEP 10:** Reinstall the bumper to the vehicle using the previously removed **OE** hardware. Torque the bumper hardware according to the manufacturers specifications.
- STEP 11:** Installation is now complete. Check to make sure all bolts are secure. (You may use included hardware to attach fairlead)

#### Product cleaning and maintenance instructions

**Stainless Steel Finish** – Aluminum polish may be used to polish small scratches and scuffs on the finish. Mild soap, window or glass cleaner may be used to clean the finish. **Dual state powder coat finish** – Mild soap, window or glass cleaner may be used to clean the finish. In order to protect the finish, you may wax your product on a regular basis with pure carnauba automotive wax. Do not use any types of soap, polish or was that contains abrasive that could damage the finish. **Textured coated finishes** should be cleaned with a mild soap on a damp sponge. Do not apply polish or wax that requires to be removed by means of buffing. This type of wax is commonly used at car wash facilities. **Chrome Finish** – Mild soap, window or glass cleaner may be used to clean the finish. In order to protect the finish you should wax your product on a regular basis with pure carnauba automotive wax. Do not use any types of soap, polish or was that contains abrasive that could damage the finish.

**For Technical Support/Warranty Information please call 310-762-9944**

---

**Smittybilt, 1600 Walnut Parkway, Compton, CA 90220**



## **Installation Instructions: Winch Plate (Part# SB2804) 2007-2010 Jeep JK**

### Limited Warranties

Smittybilt's products are covered under the following limited warranties only. Note that the duration of the limited warranty differs according to the material and finish of the product purchased. Subject to the duration and conditions of the limited warranty stated below, Smittybilt warrants to the original retail purchaser that its products are free from defects in material and workmanship. All other warranties and representations express or implied, are hereby disclaimed, including fitness for merchantability and buyer's intended use or purpose. All parts are sold "AS IS" except for the limited warranties granted herein. Buyer assumes all risks as to the selection, suitability and performance of all goods and products selected. This limited warranty does not cover damage or impairment in any part due to misuse, improper installation, accident or contact with on-road or off-road hazards, product modification, improper or inadequate cleaning and/or maintenance. Smittybilt is not responsible for items damaged during shipping. This warranty is not transferable from the original buyer. For the original Buyer to be eligible for the limited warranty coverage, the Buyer must provide proof of purchase. Smittybilt strongly recommends returning the warranty registration card.

Customer's remedy hereunder shall be limited only to repair or replacement (at Smittybilt's option) of any defective part(s) returned to Smittybilt at customer's expense. The determination of whether or not a returned part is defective or subject to coverage under the limited warranties stated herein shall be made at Smittybilt's sole discretion.

### Duration of Limited Warranty

#### **Limited Lifetime Warranty on Stainless Steel Products -**

Smittybilt stainless steel products carry the foregoing limited repair or replacement warranty against workmanship and defects in the material so long as the original purchaser retains the original stainless steel parts.

#### **Limited Five (5) Year / 50,000 Mile Pro-Rata Warranty (whichever occurs first) on Dual-Stage Powder Coating Products -**

Smittybilt dual-stage powder coated products carry the foregoing limited repair or replacement warranty for a period of (5) years or 50,000 miles (whichever occurs first) from date of purchase against workmanship and defects in the material, provided that any claim submitted after (2.5) years from date of purchase shall, if accepted, be satisfied by Smittybilt offering customer a credit on the purchase of a replacement product equal to fifty percent (50%) of customer's initial purchase price.

#### **Limited Three (3) Year / 36,000 Mile Pro-Rata Warranty (whichever occurs first) on Chrome Products-**

Smittybilt chrome products finished carry the foregoing limited repair or replacement warranty for a period of three (3) years or 36,000 miles against workmanship and defects in the material (whichever occurs first) from the date of purchase.

To assure product quality, Smittybilt reserves the right to change product design, material, specification and finishes without prior notice to customers. This limited warranty gives you specific legal rights and you may also have other rights, which may vary from state to state. Some states do not allow limitations on how long an implied warranty lasts, so the above limitations may not apply as to you. Also, some states do not allow the exclusion or limitation of incidental or consequential damages, so the above limitations or exclusions may not apply to you. Smittybilt reserves the right to discontinue product lines and substitute products, or provide other remedies than those listed in this limited warranty for those discontinued products.

**For Technical Support/Warranty Information please call 310-762-9944**

---

**Smittybilt, 1600 Walnut Parkway, Compton, CA 90220**