



## *Installation Instructions*

### *Sure Step*

*(Part # FN1730-S4B/FN1730-S4S)*

*1999-2004 Heritage Ford Super Cab F-150, F-250 Light Duty*

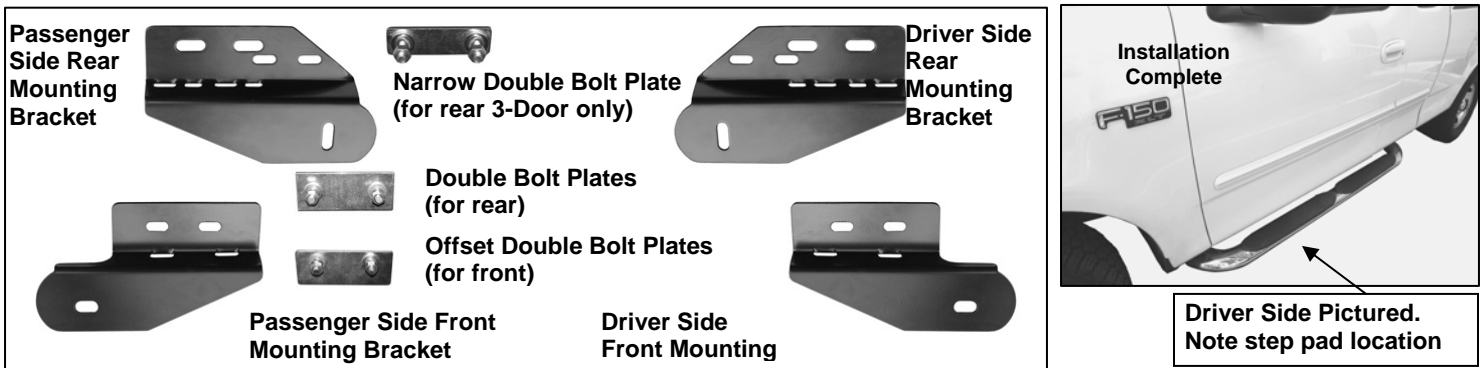
**For Technical Support/Warranty Information please call 310-762-9944**

---

**Smittybilt, 400 West Artesia Blvd, Compton, CA 90220**

**PARTS LIST:**

1	Driver/Left Sidebar	2	10mm Offset Double Bolt Plates ( <b>for front</b> )
1	Passenger/Right Sidebar	2	10mm Double Bolt Plates ( <b>for rear</b> )
1	Driver/Left Front Mounting Bracket	8	10mm ID x 27mm OD x 3mm Flat Washers
1	Passenger/Right Front Mounting Bracket	8	10mm Lock Washers
1	Driver/Left Rear Mounting Bracket	8	10mm Hex Nuts
1	Passenger/Right Rear Mounting Bracket	2	10mm Plastic Retainers ( <b>for Narrow Bolt Plate use only</b> )
4	1/2" x 2" Hex Bolts	8	8mm x 25mm Hex Bolts
4	1/2" Lock Washer	16	8mm x 24mm OD x 2mm Flat Washers
4	1/2" ID x 1 1/2" OD x 1/8 Flat Washers	8	8mm Lock Washers
1	10mm Narrow Double Bolt Plate ( <b>for driver side rear on 3-Door models only</b> )	8	8mm Hex Nuts



**PROCEDURE:**

- 1. REMOVE CONTENTS FROM BOX. VERIFY ALL PARTS ARE PRESENT. READ INSTRUCTIONS CAREFULLY BEFORE STARTING INSTALLATION.**
- From under the driver side front of the vehicle, remove the oval grommet located on the inside of the rocker panel, (**Figure 1**). Insert (1) Offset Double Bolt Plate, (with threaded studs toward the top), into the factory oval hole, (**Figure 2**).
- Locate the driver side front Mounting Bracket. Hold the Double Bolt Plate from one side while you position and attach the Mounting Bracket to the opposite side. Secure the Bolt Plate with one 10mm Flat Washer, 10mm Lock Washer and 10mm Hex Nut. Proceed to install the rest of the hardware to secure the Mounting Bracket to the Double Bolt Plate. (**Figure 3**). Do not tighten hardware at this time.
- Align the Mounting Bracket with holes in the pinch weld. Attach the Mounting Bracket to the pinch weld using the included (2) 8mm x 25mm Hex Bolts, (4) 8mm Flat Washers, (2) 8mm Lock Washers and (2) 8mm Hex Nuts. **NOTE:** Insert Bolt with Flat Washer from the outside-in. Do not tighten hardware at this time.
- Moving to the rear, use one of the (centered) Double Bolt Plates and hardware to install the Rear Bracket. Repeat steps 2 – 4 for driver side rear Mounting Bracket.

**Note for 1997-98 3-Door models only:** The 3-door model uses the included (1) 10mm Narrow Bolt Plate for driver side rear Bolt Plate installation. Thread (1) 10mm Plastic Retainer partially onto (1) threaded end on the Bolt Plate, (**Figure 5**). Insert the other end of the Bolt Plate, (without plastic retainer), into the large round hole and back out

the smaller round hole on the inside of the rocker panel. Continue to thread the Plastic Retainer down the Bolt Plate until it is flush with the sheetmetal. Thread (1) Plastic Retainer onto the remaining threaded end on the Bolt Plate, **(Figure 6)**. **IMPORTANT:** The Plastic Retainer is designed to prevent the Bolt Plate from falling into the body cavity and to aid in mounting the Bracket.

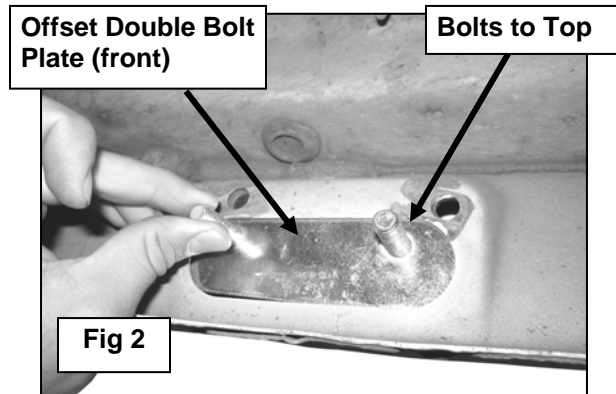
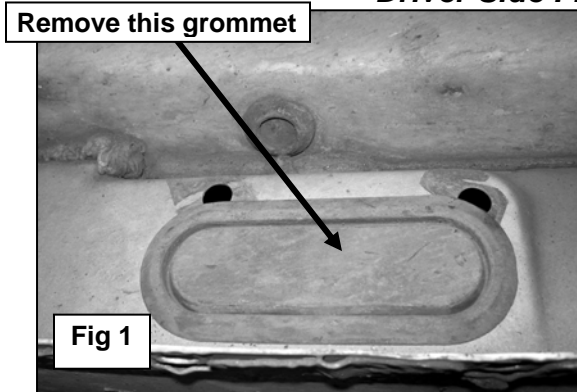
6. Depending on model year, slots in rear Mounting Brackets may align with only one factory hole along pinch weld, **(Figure 4 & 7)**. If desired, installer may drill through Pinch Weld for second Pinch Weld bolt, (included). **IMPORTANT:** Do not drill for second hole until the Sidebar has been completely installed and adjusted to properly locate the Mounting Bracket on the vehicle. Do not tighten hardware at this time.
7. Once the Mounting Brackets have been partially installed, carefully unpack and separate the driver and passenger Sidebar. **NOTE:** Step pad typically goes toward front of vehicle to match footwell. Position Sidebar onto Mounting Brackets using the included (2) 1/2" x 2" Hex Head Bolts, (2) 1/2" Lock Washers, and (2) 1/2" Flat Washers, **(Figure 4 & 7)**. Do not tighten hardware.
8. Level and adjust the Sidebar, drill for second Pinch Weld Bolt if necessary, then tighten all hardware at this time.
9. Repeat steps 2 – 8 for passenger Sidebar installation.
10. Do periodic inspections of the installation to make sure all hardware is secure and tight.

**To protect your investment**, wax this product after installing. Regular waxing is recommended to add a protective layer over the finish. Do not use any type of polish or wax that may contain abrasives that could damage the finish.

**For stainless steel:** Aluminum polish may be used to polish small scratches and scuffs on the finish. Mild soap may be used also to clean the Sidebar.

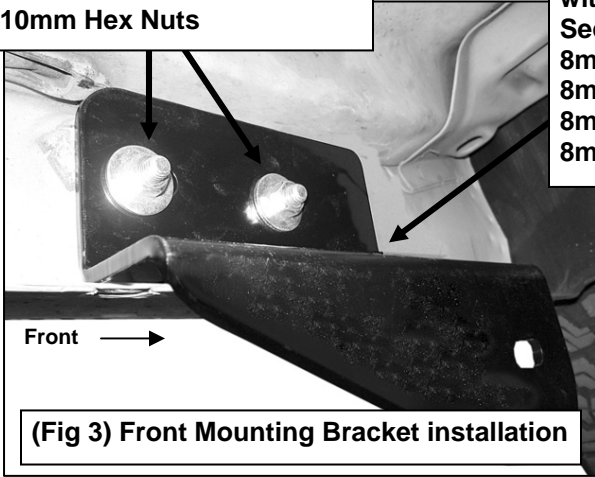
**For gloss black finishes:** Mild soap may be used to clean the Sidebar.

### ***Driver Side Front Installation Pictured***



**Driver Side Installation Pictured**

**Offset Double Bolt Plate  
10mm Lock Washers  
10mm Flat Washers  
10mm Hex Nuts**



**(Fig 3) Front Mounting Bracket installation**

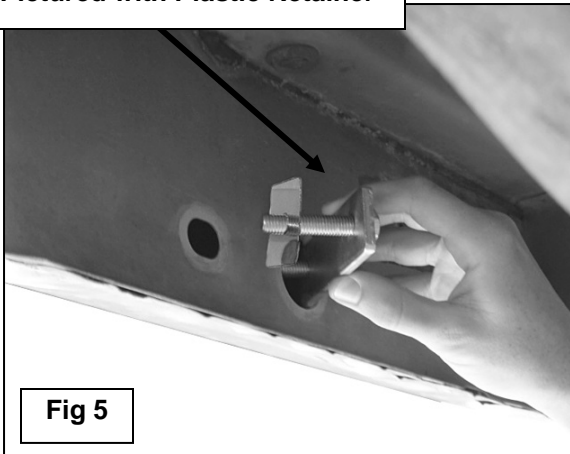
**Align holes in brackets  
with holes in pinch weld.  
Secure with:  
8mm x 25mm Hex Bolts  
8mm Hex Nuts  
8mm Lock Washers  
8mm Flat Washers**

**Centered Double Bolt Plate  
through top slots in  
Mounting Bracket  
10mm Lock Washers  
10mm Flat Washers  
10mm Hex Nuts**



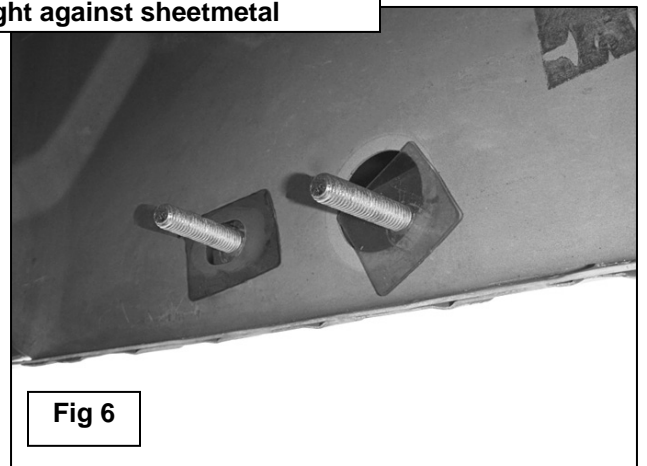
**(Fig 4) Rear Mounting Bracket installation  
(except driver side Mounting Bracket on  
97-98 3-door models)**

**Narrow Double Bolt Plate  
(driver side 3-Door model only)  
Pictured with Plastic Retainer**

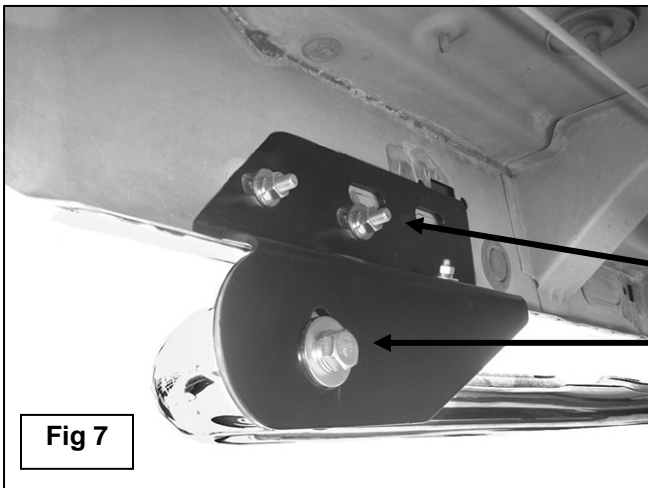


**Fig 5**

**Thread Plastic Retainers until  
tight against sheetmetal**



**Fig 6**



**Fig 7**

**Narrow Double Bolt Plate uses  
(2) lower slots on Mounting  
Bracket (driver side 3-Door  
model only)  
1/2" x 2" Hex Bolt  
1/2" Lock Washer  
1/2" Flat Washer**

## Cleaning and Maintenance

To protect your investment, wax this product after installing. Regular waxing is recommended to add a protective layer over the finish. Do not use any type of polish or wax that may contain abrasives that could damage the finish.

**For stainless steel:** Aluminum polish may be used to polish small scratches and scuffs on the finish. Mild soap, window or glass cleaner may be used also.

**For gloss black finishes:** Mild soap, window and glass cleaner may be used.

## LIMITED WARRANTY

Smittybilt (The Company) warrants to the original purchaser of this product that should the product or any part thereof, under normal use and conditions, be proven defective in material or workmanship within the warranty period of 5 years from the date of purchase, such defect(s) will be repaired or replaced (At the Company's option) without charge for parts or labor. To obtain repair or replacement within the terms of the warranty, the product is to be delivered with proof of warranty coverage ( e.g. dated bill of sale, receipt), specification of defect, freight pre-paid with Returns Good Authorization Number from Smittybilt to place of purchase. Items returned to Smittybilt without a Returns Authorization Number will be refused and returned to sender at the senders' expense.

This warranty does not apply to any product or part thereof which, in the opinion of the Company, has suffered or been damaged through altercation, improper installation, mishandling, misuse, neglect accident or acts of nature. **THE EXTENT OF THE COMPANY'S LIABILITY UNDER THIS WARRANTY IS LIMITED TO THE REPAIR OR REPLACEMENT PROVIDED ABOVE AND, IN NO EVENT, SHALL THE COMPANY'S LIABILITY EXCEED THE PURCHASE PRICE PAID BY THE PURCHASER FOR THIS PRODUCT.**

This warranty is in lieu of all expressed warranties and liabilities. ANY IMPLIED WARRANTIES, INCLUDING ANY IMPLIED WARRANTY OF MERCHANTABILITY SHALL BE LIMITED TO THE DURATION OF THIS WRITTEN WARRANTY. ANY ACTION FOR BREACH OF ANY WARRANTY HEREUNDER INCLUDING ANY IMPLIED WARRANTY OF MERCHANTABILITY MUST BE BROUGHT WITHIN A PERIOD OF 90 DAYS FROM DATE OF ORIGINAL PURCHASE. IN NO CASE SHALL THE COMPANY BE LIABLE FOR ANY CONSEQUENTIAL OR INCIDENTAL DAMAGES FOR BREACH OF THIS OR ANY OTHER WARRANTY, EXPRESSED OR IMPLIED, WHATSOEVER. No person or representative is authorized to assume for the company any liability other than expressed herein in connection with the sale of this product. Some states do not allow limitations on how long an implied warranty lasts or the exclusion or limitation of incidental or consequential damage, therefore above limitations may not apply to you. This warranty gives the purchaser specific legal rights. The purchaser may have additional rights, which vary from state to state.

Some states do not allow limitations on how long an implied warranty lasts or the exclusion or limitation of incidental or consequential damage, therefore above limitations may not apply to you. This warranty gives the purchaser specific legal rights. The purchaser may have additional rights, which vary from state to state.