

SPEED BY SPECTRE®

The 400mph Company™



Intake Installation Instructions

P/N 99002 (red filter) - P/N 99002B (blue filter)

P/N 99002K (black filter) - P/N 99002W (white filter)

Parts List

- 1 - Air Intake tube
- 1 - Air Filter
- 1 - 4" Offset Velocity Stack Adaptor
- 1 - 4" Flex Coupler
- 4 - Hose Clamps
- 1 - MAFS Sleeve Thick
- 1 - 4" 90° Rubber Elbow
- 2 - Bolt, Hex/Flange,
- 2 - Lock Washer
- 3 - Allen Bolt
- 3 - Flat Washer
- 3 - Locknut
- 1 - Allen Wrench
- 1 - Heat Shield (Pc 1 of 2)
- 1 - Heat Shield (Pc 2 of 2)
- 1 - Rubber Seal

Tools Required:

- 5/16" nut driver
- Ratchet
- 6" extension
- 8mm socket
- 10mm socket
- 13mm socket

This kit comes with a high flow lifetime hpR filter. It is factory pre-oiled and ready to install. For cleaning instructions, visit our website – www.SpeedBySpectre.com

Year/Make/Model/Engine

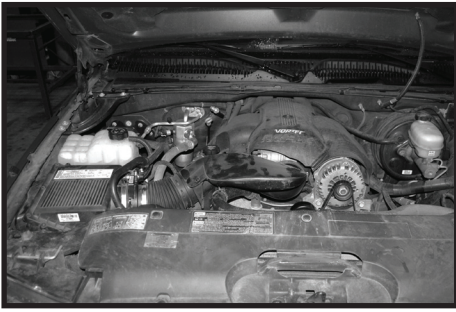
- 2002-2006 Cadillac Escalade 5.3-V8
- 2002-2006 Cadillac Escalade EXT 6.0-V8
- 2003-2006 Cadillac Escalade 6.0-V8
- 2001-2006 Chevy Silverado 1500 HD 5.3-V8
- 2001-2006 Chevy Silverado 2500 HD 5.3-V8
- 2001-2006 Chevy Silverado 2500 HD 6.0-V8
- 1999-2006 Chevy Silverado 1500 4.8-V8
- 1999-2006 Chevy Silverado 1500 5.3-V8
- 1999-2006 Chevy Silverado 1500 6.0-V8
- 2000-2006 Chevy Suburban 6.0-V8
- 2000-2006 Chevy Tahoe 5.3-V8
- 2000-2006 Chevy Tahoe 6.0-V8
- 2001-2006 GMC Sierra 1500 HD 5.3-V8
- 2001-2006 GMC Sierra 2500 HD 5.3-V8
- 2001-2006 GMC Sierra 2500 HD 6.0-V8
- 1999-2006 GMC Sierra 1500 4.8-V8
- 1999-2006 GMC Sierra 1500 5.3-V8
- 1999-2006 GMC Sierra 1500 6.0-V8
- 2000-2006 GMC Yukon XL 6.0-V8
- 2000-2006 GMC Yukon 5.3-V8
- 2000-2006 GMC Yukon 6.0-V8



Legal for use on pollution controlled vehicles
C.A.R.B E.O.# D-629-4
for applications listed above

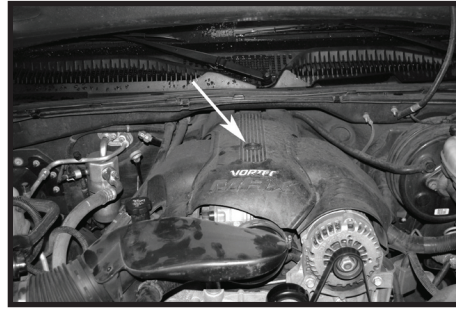
For filter reorders ask at the special order counter of your local parts store or call:
1-909-673-9800

ask for: P/N HPR9891 (red filter)
P/N HPR9891B (blue filter)
P/N HPR9891K (black filter)
P/N HPR9891W (white filter)



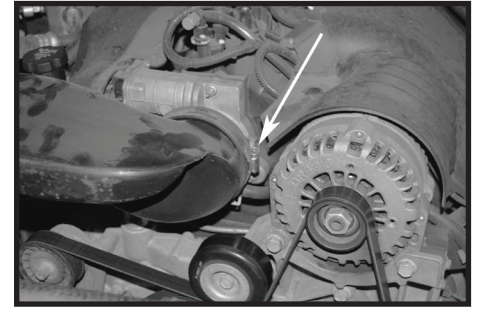
Step 1

Safety first! Before you begin the installation, make sure that the vehicle is in park or neutral (for vehicles equipped with a manual transmission) with the parking brake set. Disconnect the negative battery terminal and verify all components listed are present.



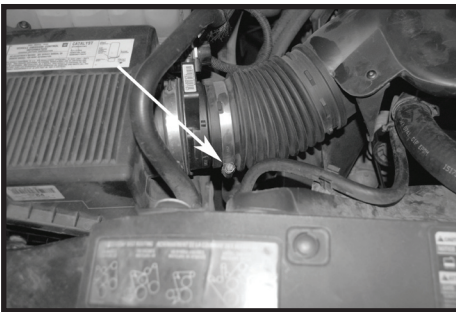
Step 2

Start by removing the engine cover that is attached by small ball and socket joints or fastened with hardware. Lift the cover up and off and it will come off easily. Depending on the year, make, and model the cover may vary.



Step 3

Loosen the clamp at the throttle body.



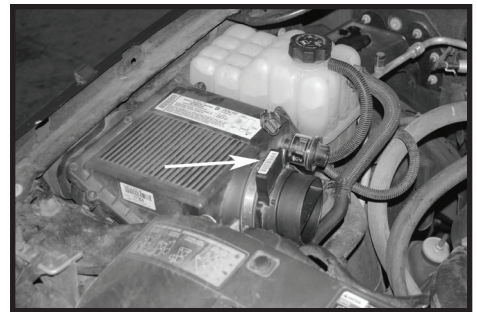
Step 4

Loosen the clamp at MAF sensor. Remove the factory intake tube from vehicle.



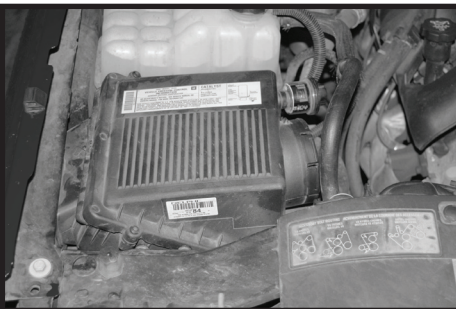
Step 5

Disconnect mass air flow sensor electrical connector.



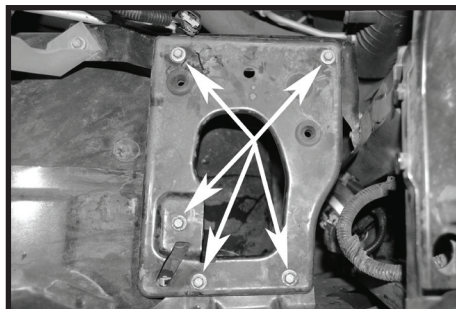
Step 6

Loosen the clamp at MAFS. Remove the MAFS from factory air box making sure the factory boot stays on the MAFS.



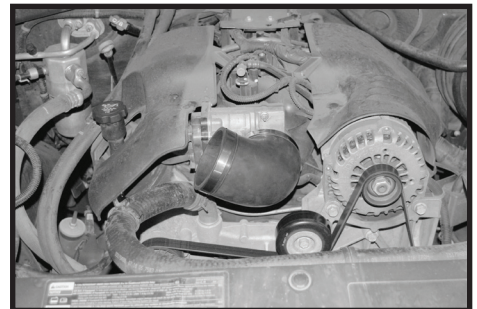
Step 7

Remove the air box assembly by pulling up and out firmly.



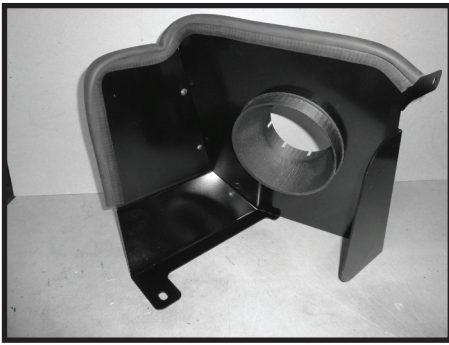
Step 8

Remove the air box mounting plate from vehicle. Two of these bolts will be re installed with the new heat shield.

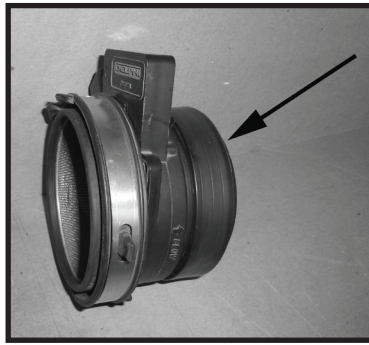


Step 9

Install 90° boot on throttle body with the short side on the throttle body and clamp on the throttle body side to secure the boot in place. Install a second clamp but do not tighten at this time.



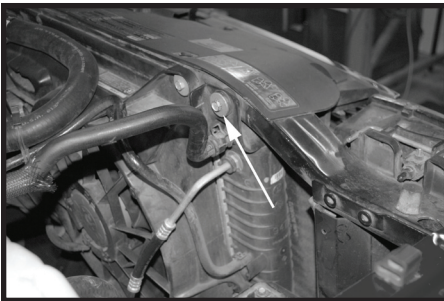
Step 10
Assemble the heat shield with the tabs placed on the outside of heat shield. Install rubber bulb seal and the velocity adapter with supplied hardware on heat shield as shown.



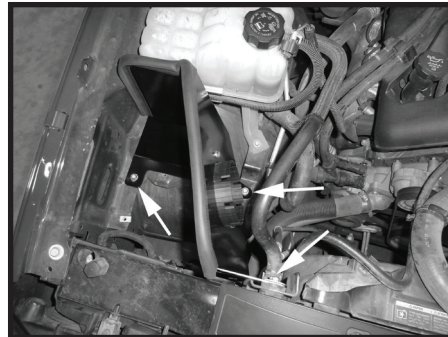
Step 11
Install supplied MAF sensor sleeve over the MAF sensor, making sure that the sleeve is completely bottomed out on the flange.



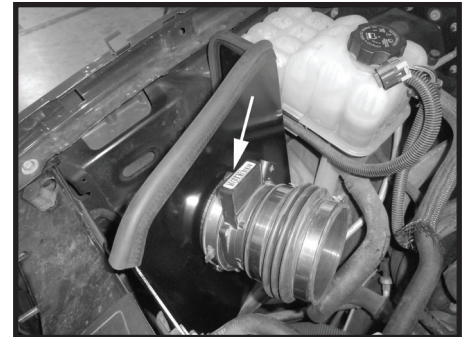
Step 12
Install the 4" flex coupler on the outlet side. The small arrow on the MAFS must point towards the flex coupler. Install a second clamp but do not tighten at this time.



Step 13
Remove bolt from radiator shroud. This will be reused in the next step.



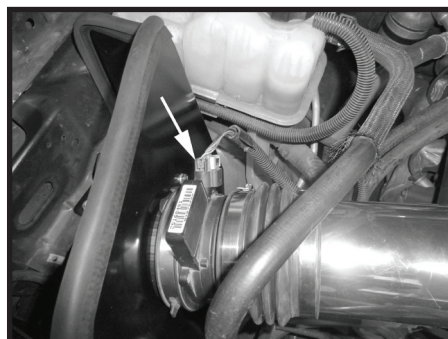
Step 14
Install the heat shield into the truck as shown by reusing the hardware from the tray. There are two bolts that will go in the bottom. The third bolt will be reused from the radiator mount removed in Step 13.



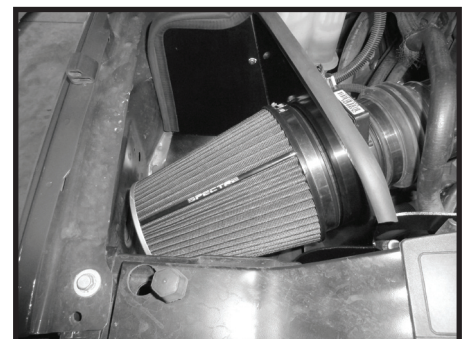
Step 15
Install the MAFS as shown making sure the orientation of the electrical connector is in the 1'oclock position. Tighten the clamp on the boot.



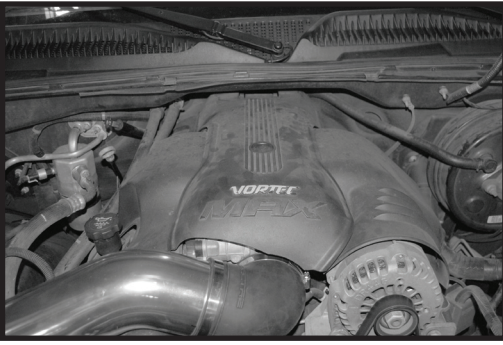
Step 16
Install the intake tube as shown and once in position tighten clamps.



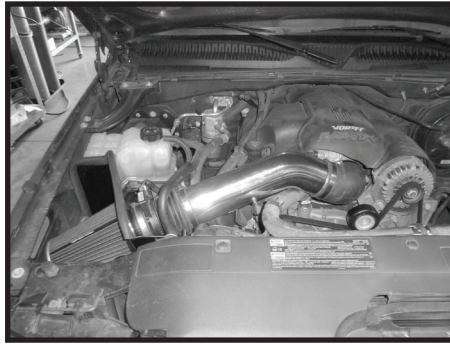
Step 17
Reconnect mass air flow electrical sensor



Step 18
Install the filter and fully tighten clamp.



Step 19
Reinstall the engine cover.



Step 20
Make sure that all clamps and hardware are fully tightened. Reconnect the battery cable, start the vehicle and let it warm up. Shut off and inspect the installation once more for any loose clamps, wires, or hardware. Test drive & enjoy! Your installation is now complete. Periodically check all clamps and brackets.

If you have any difficulties or questions regarding the installation of this intake system, contact the Spectre Performance Technical Department by email - Tech@spectreperformance.com or by phone (909) 673-9800 Monday thru Thursday 6:00am to 4:30pm PST.

SPEED BY SPECTRE

The 400mph Company

(909) 673-9800

www.SpeedBySpectre.com