

## SURFACE PREPERATION:

**1** Wash the whole exterior of your vehicle removing all loose dirt, grime or road film. The cleaner the surface is, the better the Camo Hides will adhere. Remove anything that could pose as an obstruction to you while you're installing Camo Hides®. Mirrors, moldings, handles, locks, emblems or anything that can easily be removed. REMEMBER the more attention you pay to the cleaning and preparation, the more successful your application will be.

**2** Use 70% Isopropyl Alcohol as a final wipe before installation. If there is any stubborn residue on the vehicle you can use a bug and tar remover but be sure to come back and wipe with alcohol as the final step before installation.

**Note:** If Camo Hides are applied to vehicles with paint that is not well bonded to the surface or rust spots, some paint may be lost when the decals are removed.

## KIT CONTAINS:

Camo Hides Panels  
Squeegee

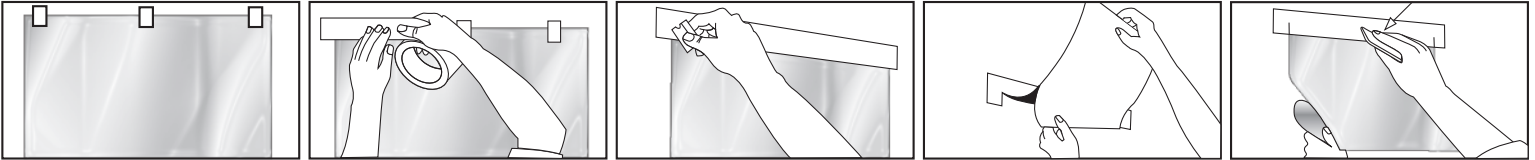
## TOOLS NEEDED:

- 70% Isopropyl Alcohol
- Lint free cloth
- Low-tack 2" masking tape. (Blue painters tape)
- Hobby knife, Xacto Knife or single edged razor blade
- Rivet brush (if installing over rivets)
- Heat gun (may be needed for complicated contours)

## INSTALLATION:

**3** Start the installation process at the rear of the vehicle working forward overlapping each panel to eliminate the effects of wind against the seams.

**4** To ensure that you've got the size and placement correct, place Camo Hides® against the panel to ensure the fit. When you're sure that it's in place apply a few small strips of masking tape across the top to hold it in place. Now make a masking tape "hinge" across the entire width at the top of the panel, half on the decal, half on the vehicle (2" wide tape works best).



**5** Starting from the top, peel away a few inches of the back lining from your Camo Hides® and slowly pull it straight downward applying mild squeegee pressure over the material slowly and gently. Squeegee the area from center outward and left to right continuing downward. Hold the squeegee angled approximately 10° to 20° toward the unsqueegeed area. Do not angle the squeegee toward an area that has already been squeegeed because this will trap air and create bubbles and wrinkles. If you do see any wrinkles or bubbles along the way, gently smooth them out. If you encounter stubborn bubbles or wrinkles you can lift the decal away from the surface to reposition it until the squeegee has pushed the decal firmly against the surface

**6** It's important that you should not attempt to stretch Camo Hides® over areas that are hard to reach, body indentations or tight curves, as this may result in tearing the material accidentally. What you should do is lift the Camo Hides® away from the panel and squeegee it firmly and carefully into the recessed areas.

**7** Once you're done trimming the material around any obstructions, use a pin or corner of a single edge razor blade to puncture the bubbles and gently push all of the air out of the bubbles.

**8** If you have to contend with a lot of curves, dents or rivets on your vehicle, use a heat gun or hair dryer on LOW HEAT SETTING and a rivet brush or squeegee to work out the wrinkles and bunches. Heat the material slightly while holding the heat source several inches away from the material to make it more pliable.

**9** You may have to make relief cuts for tight countoured edges and curves. When making relief cuts, cut slits at the edge of the material and overlap them so that one piece covers the other. The pieces should normally overlap at least ¼ inch to ensure proper coverage. Press the edges together firmly with your fingers and apply slight heat.

**10** Once you have completed the installation check and see if there are any air bubbles, wrinkles or areas that need further attention. If there is use firm pressure and heat then squeegee or brush out areas until smooth.