

T-REX

Billet Grilles

20391

**06-08 BUICK
LUCERNE**

20391

**06-08 BUICK
LUCERNE**

06-08 BUICK LUCERNE **BILLET INSERT W/ STAINLESS MOLDING**

Recommended Tools:

Flathead Screwdriver
Phillips Screwdrivers
Wire Cutters

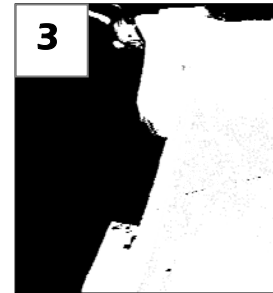
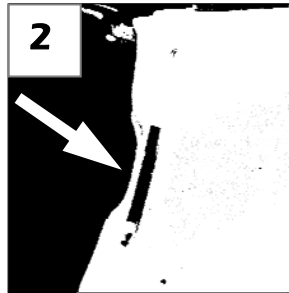
Parts List / Hardware:

1 Billet Insert w/ Stainless Ring
2 #8 x 1" Screws (#6 Head)
2 #8 U-Nuts
2 Plastic Fasteners
2 L Shaped Extension Brackets

Read and understand instructions before attempting installation

Step 1

Remove 8 plastic rivets securing the radiator cover by pressing on rivet center. Cut two plastic fasteners on each end of the grille (on top). Remove 6 plastic retainer clips from top of grill and on the bumper cover (near head lights). Use a flat screw driver to depress pressure clips along lower edge of grille.



Step 2

The stainless ring is installed here at the factory; for clearance, trim the mounting slots on the top left and right (1). Use wire cutters to cut the plastic; the driver side mounting slot shown before (2) and after cutting (3).

Position the grille into place; slide the lower mounting tabs into the factory mounting slots. Secure the lower tabs with the provided plastic fasteners.

Step 3

Install a #8 U-Nut over the smaller 3/16" holes on the 'L' brackets. Secure the u-nut side of the brackets to the upper mounting tabs on top of grille; use the Phillips screws. Do not tighten at this time.

Position the larger 3/8" hole in the brackets over the stock mounting holes; install two of the factory fasteners to the bracket; securely tighten all hardware. ***Thank you for purchasing a T-Rex Grille. 7/17/07***