

T-REX

Billet Grilles

59101

02-05 CHEVY
SILVERADO

59101

02-05 CHEVY
SILVERADO

CNC FRAMED VERTICAL BILLET GRILLE - POLISHED

Recommended Tools:

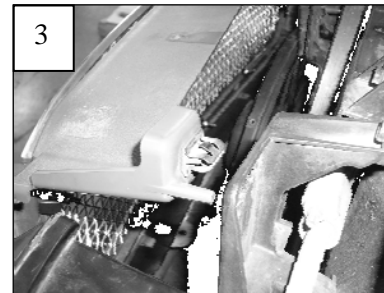
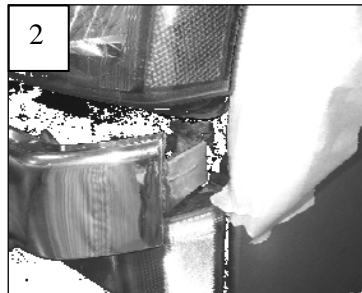
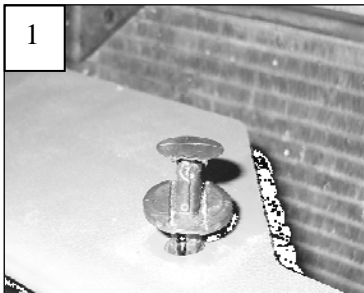
3/8 Wrench or Nut Driver
Slotted Screwdriver
Die Grinder or Jigsaw
Files / Sandpaper
Liquid Thread Lock
Masking Tape

Parts List / Hardware:

1 Billet Inserts w/ Frame
2 Billet End Caps (1 left & 1 right)
4 #8 x 3/4" Phillips Screws
4 #8 x 1" Screw (#6 Head)
8 #8 Flat Nuts
4 1/2" x 1 1/4" Extension Brackets

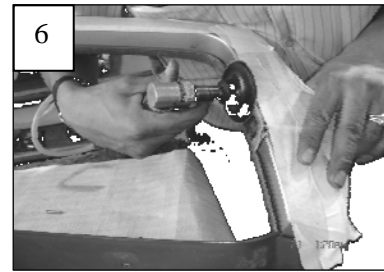
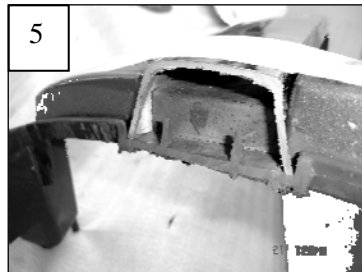
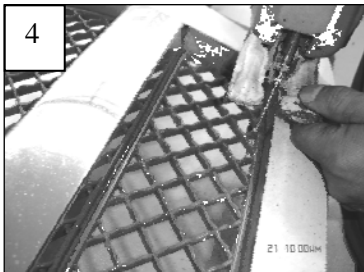
Read and understand instructions before attempting installation

Step 1



Apply masking tape to the chrome and painted areas to prevent scratching. Remove the plastic radiator cover fasteners (1). Release the headlight retaining rod to loosen the headlights. Pull the ends of the grille forward to release the metal clips (2). Now release the metal clips next to the headlights and signal lights (3). Remove the grille.

Step 2



Place the grille face up on a work-table. Cut the center mesh along the top and bottom openings; make your cut at the base of the mesh (4). Continue the cuts down the grille across the chrome bar as shown (5). Make your cut in line with the grille opening; draw a guide-line using a marker. File or sand your cuts smooth (6).

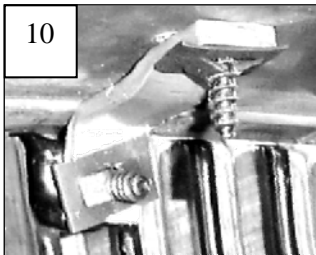
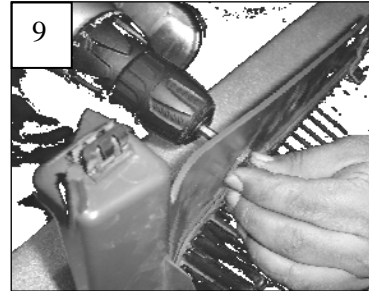
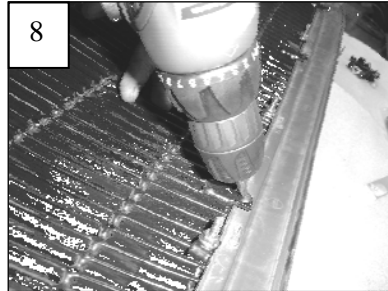
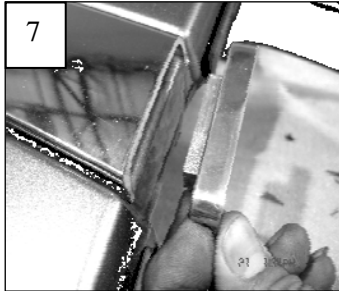
59101

59101

(Continued)

Step 3

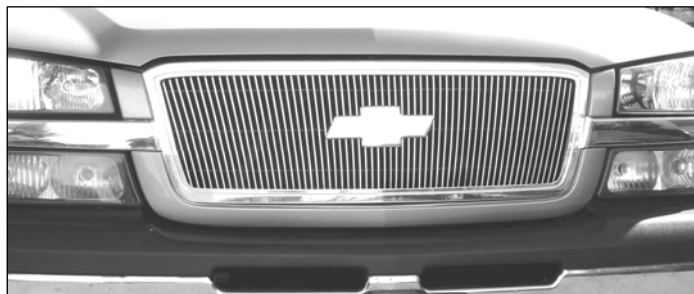
Slide the billet end caps over the cuts on the chrome bar (7). These are a press fit; however if they are loose, a small amount of epoxy or contact glue may be applied to hold them in place.



The billet is assembled to the frame at the factory. Note where the frame is assembled to the billet; it will be necessary to remove the frame. Attach the four extension brackets to the tabs on top of the billet grille. Use the screws with the small head and flat nuts. Center the billet into the opening of the grille shell. **BE SURE THE BILLET IS CENTERED;** Drill a 1/8" hole aligned with the lower mounting tabs (8). Secure these tabs with the #8 screws; **DO NOT OVER-TIGHTEN.** Drill a 1/8" hole aligned with the upper extension brackets (9).

Step 4

Re-attach the frame to the billet. Center the frame in front of the grille. Tighten the nuts hardware securing the frame to the grille; **DO NOT OVER-TIGHTEN THE STUDS** (Over-tightening can cause dimpling to the face of the billets). Re-install the grille assembly back onto the vehicle. Slowly close the hood to check the clearance between the hood and grille; adjust the grille if needed. It may be necessary to remove or loosen the hardware to achieve the proper fit. *Thank you for purchasing your T-Rex billet grille. 2/15/06*



Shown with Billet Bowtie (sold separately)