

# T-RAX

## Billet Grilles

70556

**04-08 FORD  
F-150 and  
LINCOLN LT**

70556

**04-08 FORD  
F-150 and  
LINCOLN LT**

**04-08 FORD F-150 ALL MODELS / 05-07 LINCOLN LT**  
**HYBRID SERIES MESH GRILLE - POLISHED**

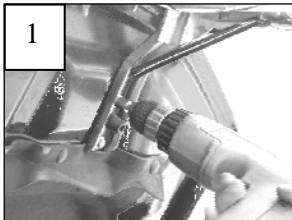
**Recommended Tools:**

3/8 Wrench or Nut Driver  
Die Grinder W/ Cut-Off Wheel  
Liquid Thread Lock \*\*  
Torques  
(Optional\*\*)

**Parts List / Hardware:**

|   |                                   |
|---|-----------------------------------|
| 1 | Billet Insert                     |
| 8 | 10-32 x 3" Aluminum Studs         |
| 8 | 10-32 x 1.5" Steel Studs          |
| 8 | 10-32 Nylon Lock Nuts             |
| 8 | #10 Flat Washers                  |
| 8 | 1/2" 'L' Brackets (F-150 install) |
| 8 | 1" J Hooks (Mark LT install)      |

**Read and understand instructions before attempting installation**



**Step 1**

Remove the six retaining nuts from the rear of the grille shell. Now remove the four bolts that hold the grille shell to the hood (1). Remove the shell assembly from the vehicle. Apply masking tape to the chrome or painted area of the grille to prevent scratching.

**Step 2**

This step covers cutting the center grille work from the opening. F-150 trucks have two styles of grilles; 2wd models have a full honeycomb center and 4wd models (except Lariat models) have a bar design with small honeycomb openings. Lincoln LT trucks have only one style. Find your model below and follow the instructions.

**04-08 F150 2wd with full honeycomb**

Use a die grinder or jigsaw to cut the honeycomb center from the grille. Make your cut at the base of the honeycomb; where it meets the inner edge of the grille. Thread the **3" aluminum studs** into the grille. A small amount of liquid thread lock may be applied to the threads\*\*. **DO NOT OVER-TIGHTEN THE STUDS.** Test fit the billet over the face of the grille; the billet will rest on the on the ring just inside the chrome or painted ring. Center the grille over the shell; use the 'J' Hooks, washers and Nylon lock nuts to secure the billet.

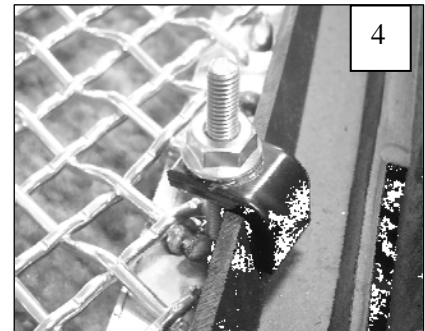
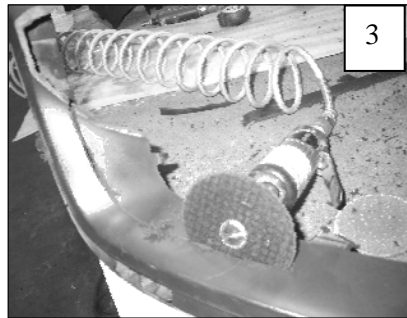
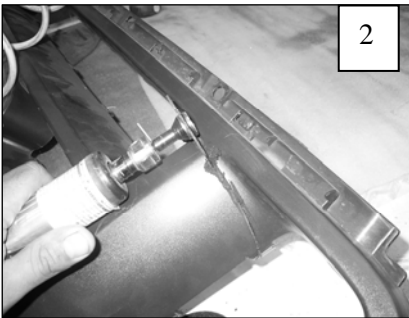
# 70556

# 70556

(Continued)

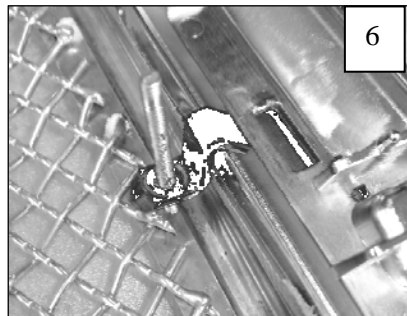
## 04-08 F150 4wd with bar design grille

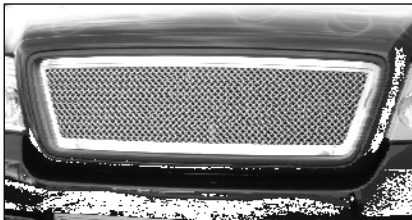
Use a die grinder or jigsaw to cut the center bars from the grille. Make your first cut at the base of each bar that connects to the outer opening of the grille (2). 2006 models will require cutting the mesh because it is molded to the bars. This will allow the center section to be removed from the grille. A second cut will now be made along the top and on each end (3). Make your cut approximately  $\frac{3}{4}$ " from the back of the grille; this will leave a  $\frac{3}{4}$ " lip for the 'J' hooks to sit against. Make the cut along the bottom approximately  $\frac{1}{4}$ " from the back of the grille. Thread the **1.5" steel studs** into the grille. A small amount of liquid thread lock may be applied to the threads\*\*. **DO NOT OVER-TIGHTEN THE STUDS**. Test fit the billet over the face of the grille; the billet will rest on the on the ring just inside the chrome or painted ring. Center the grille over the shell; use the 'L' Brackets, washers and Nylon lock nuts to secure the billet (4).



## 05-07 Lincoln LT Truck (all)

Make a cut at the base of the chrome vertical bars on Lincoln LT trucks (5). Remove the Lincoln logo from the factory grille if re-used. Part number 19556 (sold separately) is used to install the factory logo on the grille. Thread the **1.5" steel studs** into the grille. A small amount of liquid thread lock may be applied to the threads\*\*. **DO NOT OVER-TIGHTEN THE STUDS**. Test fit the billet over the face of the grille; the billet will rest on the on the chrome ring. Center the grille over the shell; use the 'J' Hooks, washers and Nylon lock nuts to secure the billet (6).





### **Step 3**

Install the grille assembly back onto the vehicle.

*Thank you for purchasing your T-Rex billet grille.*

11/21/05