

# **T-REX**

## **Billet Grilles**

**75474**  
**05-08 DODGE**  
**CHARGER**

**75474**  
**05-08 DODGE**  
**CHARGER**

### **HYBRID SERIES BUMPER - POLISHED** **(EXCEPT SRT MODELS)**

#### **Tools Required:**

Slotted Screwdriver  
Philips Screwdriver  
Small Hammer and 1/16" Punch  
7MM & 10MM Sockets  
Liquid Thread Lock (Optional)  
Drill & 1/4" Drill Bit

#### **Hardware:**

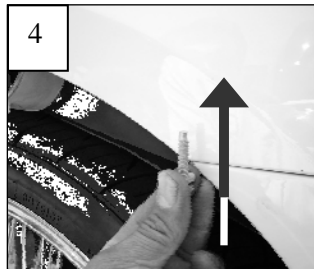
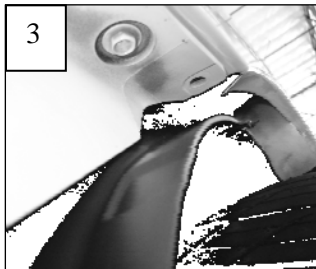
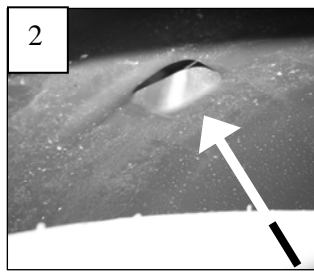
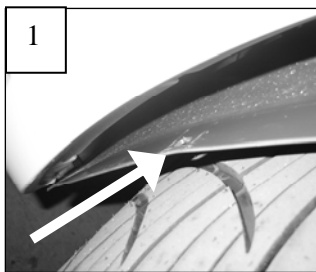
1	Bumper Insert (Hybrid Series)	6	Plastic Body Retainers
4	10-32 x 3" Aluminum Studs	2	1" J Hooks
4	#10 Flat Washers	1	4" Flat Bracket
2	Nylon Lock-Nuts		
2	Flange Nut		

### **Read and understand instructions before attempting installation**

**NOTE:** This bumper grille will not fit SRT models.

#### **Step 1**

It will be necessary to remove the bumper cover to install the bumper grille. Open the hood. Use a screwdriver to remove the eight push in fasteners along the top of the bumper cover. Next, remove the two-piece plastic cover assembly behind the four fasteners. Each cover has metal press-in clips securing them in place. Pull up on the covers to remove them. Remove the ten 7mm bolts that hold the engine splash shield to the bumper cover along the bottom.



#### **Step 2**

Remove the three plastic rivets securing the bumper cover to splash shields just below the fender line in each wheel well; 6 total (1). Use a small hammer and punch to remove the center from each plastic rivet. These rivets will be replaced with new hardware.

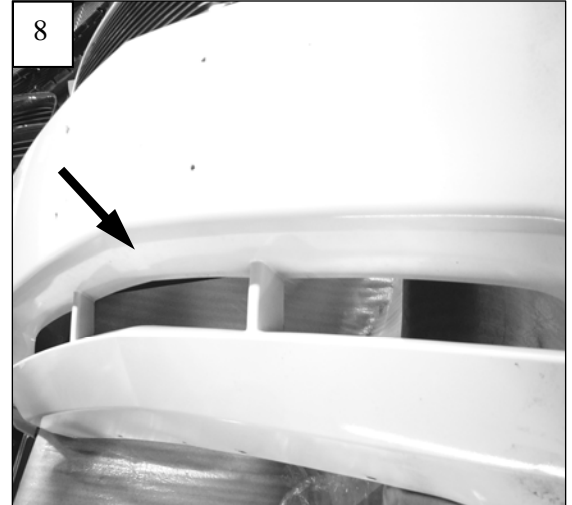
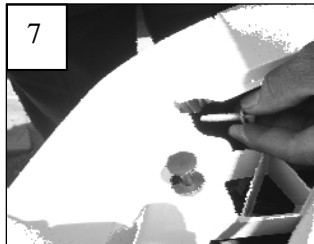
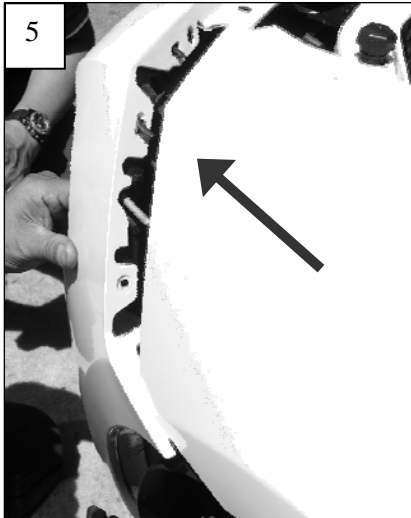
Now remove the single remaining plastic fastener in each wheel well. This is a re-usable fastener located in a recessed hole (2).

Each end of the bumper cover is secured to the fenders with a 10mm bolt. Pull the wheel well splash shields back and remove the vertical bolt in each corner (3 & 4).

## *(75474 - Continued)*

### **Step 3**

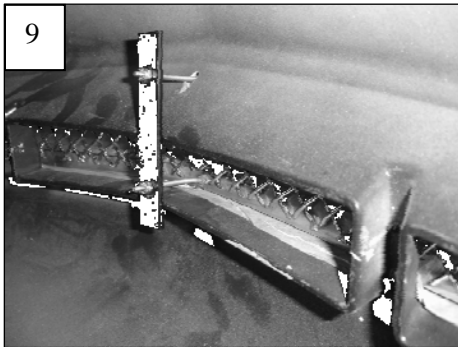
Behind each signal light is a 10mm nut attached to a stud (5). Access this nut from the wheel well with an extension and socket. The last retaining bolt is in the top corner of each fender. This bolt is shown next to the outer push in fastener (6 & 7).



Once these are removed, gently pull the bumper cover forward until the signal lights pop out. Disconnect the signal light wiring. Continue removing the bumper cover and disconnect the wiring to the driving lights.

### **Step 4**

Thread the mounting studs into the grille by hand. ***DO NOT USE ANY TOOLS TO TIGHTEN THE STUDS.*** A small amount of liquid thread lock may be applied to the threads. Over-tightening may create dimples on the face of the grille and will void your warranty. In some cases, the aluminum mesh will overlap the mounting holes. Use wire cutters to trim the mesh if needed.



### **Step 5**

Test fit the grille into the opening. Drill a 3/16" to 1/4" hole aligned with the upper mounting stud (8).

Re-center the grille into the opening; install the flat bracket over the center studs (9). **Secure the center with washers and Flange Nuts.** Secure the J hooks on the outer mounting studs with the remaining washers and nuts.

### **Step 6**

Connect the wiring to driving lights. Re-install the assembled bumper cover assembly back onto the vehicle. The signal light wires must be in the bumper cover light holes. Carefully align the fenders to bumper cover studs. Gently push the bumper cover in place. Secure the assembly with the factory hardware. Replace the three rivets from each wheel well splash shield with the plastic push-in retainers supplied in the hardware pack. Re-install the signal lights. ***Thank you for purchasing your T-Rex billet grille. 7/24/07***