

T-REX TRUCK PRODUCTS INC.

80473

05-07 DODGE
MAGNUM

80473

05-07 DODGE
MAGNUM

05-07 MAGNUM – 1 PC HYBRID MESH GRILLE - CHROME

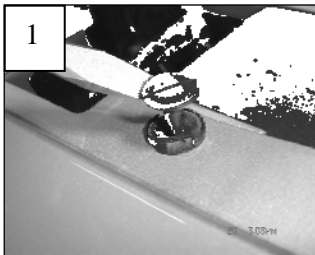
Tools Required:

Slotted screwdriver
7mm & 10mm Sockets / Ratchet
Drill & 1/8" Drill Bit
Small Hammer and 1/16" Punch
Die Grinder or Jigsaw
Masking Tape
Liquid Thread Lock

Hardware:

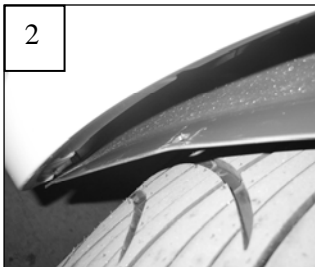
1 Mesh Insert
12 10-32 x 2 Aluminum Studs
12 10-32 Nylon Lock Nuts
12 3/4 'L Hooks'
6 Plastic Push-In Fastener

Read and understand instructions before attempting installation



Step 1

This grille will not fit SRT models. Open the hood. Test fit the grille over the opening; the grille should have the same shape as the bumper opening. Use a screwdriver to remove the six push in fasteners along the top of the bumper cover (1). Next, remove the two-piece plastic cover assembly behind the four fasteners. Each cover has metal press-in clips securing them in place. Pull up on the covers to remove them. Remove the 7mm bolts that hold the engine splash shield to the bumper cover along the bottom. Behind the grille in each lower corner is a molded flap that is secured to the foam bumper pad. Access these fasteners through the area from the two-piece cover on top. These are a special 1/8" square head design screw. These can be unscrewed by hand.



Step 2

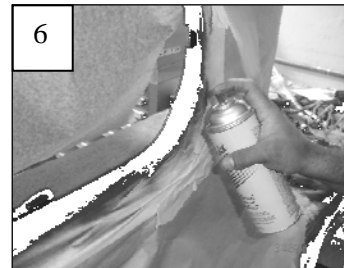
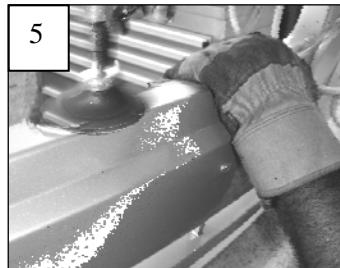
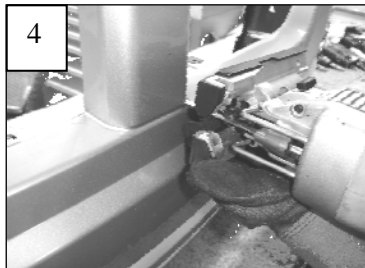
Remove the three plastic rivets securing the bumper cover to splash shields just below the fender line in each wheel well; 6 total (2). Use a small hammer and punch to remove the center from each plastic rivet. These rivets will be replaced with new hardware. Each end of the bumper cover is secured to the fenders with a 10mm bolt. Pull the wheel well splash shields back and remove the vertical bolt in each corner (3).



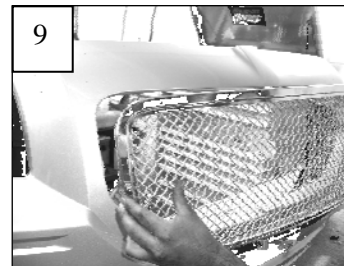
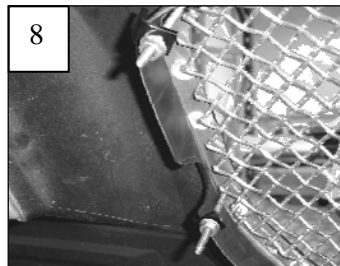
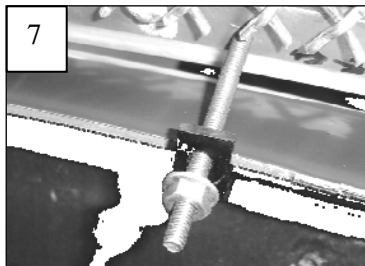
Now the splash shields below the engine must be removed. Note how they interlock; they will need to be re-installed the same way. Remove the nine 7mm bolts along the Bottom. There are two 10mm bolts in the center of this splash shield that must also be removed.

8047380473*(Continued)***Step 2**

The fog lights (if equipped) must be disconnected and removed from the bumper cover. Gently pull the bumper cover forward about 2" on each side. This will gain access to the lights. Twist each light socket assembly and remove. Now the bumper can be removed. Pull the bumper assembly forward. The foam bumper pad behind the bumper cover does not need to be removed from the vehicle. Remove the factory grille inserts. Unscrew the Phillips screws securing the bottom of the inserts. Depress the two clips on top of the inserts. Pull the inserts out of the bumper opening.

**Step 3**

Apply masking tape to the face of the bumper cover. Use a jig-saw or die grinder to cut the center cross bars from the grille opening (4). Make your cuts at the base of the bars (4). Use a die grinder or file to clean the cuts (5). Apply a coat of black spray paint to hide the surfaces in the opening (6). Cut the tabs that hold the factory inserts in place.

**Step 4**

Apply a small amount of liquid thread lock to the threaded studs and install into the grille (7 & 8).

DO NOT OVER-TIGHTEN THE STUDS; THIS CAN DAMAGE THE FACE OF THE GRILLE.

Center the grille over the bumper opening (9). The grille will overlap the edge approximately 1/4".

Install the 'L' hooks' and nuts onto the threaded studs (7 & 8). *The studs along the top and bottom will need to be bent upwards towards the hood just slightly.* Tighten the hardware with the 'L hooks' wrapped around the edge of the opening.

Step 5

Re-install and assemble the bumper cover assembly back onto the vehicle. The rivets removed from the wheel wells are not re-usable. Replace the three rivets from each wheel well splash shield with the plastic push-in fasteners supplied in the hardware pack.

Thank you for purchasing a T-Rex Billet Grille. 2/14/07