



9400 7TH ST. UNIT C-1  
Rancho Cucamonga, CA 91730  
(909) 476-7225 TECH SUPPORT  
(909) 476-1491 FAX  
www.volantperformance.com

**PART NO. 15850**

MAKE	MODEL	YEAR	LITER
CHEVROLET	BLAZER	92-95	4.3/5.0
	SILVERADO	88-95	4.3/5.0
	SUBURBAN	92-95	4.3/5.0
GMC	SIERRA	88-95	4.3/5.0

**ACCESSORIES:**

ACCESSORIES:	PART NO.
VOLANT REPLACEMENT FILTER	5123
AIR FILTER CLEANER KIT	5100

**INSTALLATION INSTRUCTIONS PART NO. 15850**

**READ INSTRUCTIONS THOROUGHLY BEFORE DISASSEMBLING. DO NOT SKIP ANY STEPS. ANY QUESTIONS ON A VOLANT KIT MAY BE REFERRED TO OUR TECH SUPPORT LINE AT (909) 476-7225 OR VISIT OUR WEBSITE AT WWW.VOLANTPERFORMANCE.COM**

**TOOLS NEEDED FOR INSTALL:**

1. FLAT HEAD SCREWDRIVER
2. 9/16 OPEN WRENCH AND SOCKET
3. 8MM OPEN WRENCH
4. 1/2" OPEN WRENCH
5. PHILLIPS SCREWDRIVER

**INSTALLATION:**

1. Turn vehicle to the off position.
2. If you have an 88-91 year vehicle, it is necessary to replace your radiator over flow bottle with a 95 model (GM Part #15650373). The new bottle will bolt up in the same location as your prior over flow bottle. There is no need for modification or drilling.
3. Pull accordion tube away from filter housing located on you carburetor.
4. Remove the resonator box with the accordion tube by unscrewing the bolts located underneath the passenger side wheel well.
5. Remove the wing nuts on your filter housing then pull entire unit off.
6. Disconnect the breather hose from the spacer and remove the spacer away from the throttle body.
7. If you have an 88-91 year vehicle, skip this step. Unscrew both rods that fastened filter housing down by using an 8 MM wrench. Make sure not to loosen nuts that hold the throttle body down.
8. Place throttle body stud in the position shown in Fig. A.
9. Place bonnet and rubber gasket on throttle body and fasten down with knurled nut and fender washers provided.

10. Insert 1/2" X 16" vinyl trim around fender well opening where your existing filter box was pulling air.
11. Attach the Volant filter box bracket to the Volant filter box using 5/16" bolts, 5/16" lock washers and 1/4" washers on the brackets smaller slot side. Secure with a 1/2" open wrench.
12. Before placing the Volant filter box assembly, insert both 3/8" bolts and 3/8" lock washers in the filter box bracket. Then lower and line up the bolts with the existing holes in you wheel cover. Place 3/8" nuts and 3/8" washers by hand on the other side. Slide filter box assembly back into the hole until it lines up against the fender. Tighten 3/8" nuts with a 9/16" socket and a 9/16 open wrench to hold the bolt in place.
13. Slide the 3 1/2" X 3" hump hose and #056 clamps provided by Volant over the 3 1/2" inlet on the filter box assembly. **DO NOT tighten clamps until everything is in place.**
14. Slide the other 3 1/2" X 3" Volant sleeve and # 056 clamps on the bonnet that connects to your throttle body. **DO NOT tighten until everything is in place.**
15. Install the Volant air duct that goes between the bonnet and filter box. If you have a lowered or raised vehicle maneuver duct until you position it correctly.
16. Reconnect the 1/2" X 12" breather hose provided from the Volant bonnet to the crank case.
16. Make sure everything is properly connected and tighten hose clamps. Reconnect ground cable and your finished. Enjoy your Volant intake.
17. Make sure everything is tightened and properly connected.
18. Place the C.A.R.B. label on or near the Volant system in the engine compartment.

**WARNING: OVER TIGHTENING HARDWARE MAY ALTAR THE INTEGRITY OF THE VOLANT AIR INTAKE SYSTEM.**

**BEFORE ROAD TESTING**

1. Start engine, leaving the transmission in park and securing the parking brake.
2. Make sure to look and listen for any unusual noises or air leaks. Repair problems if needed.
3. Once completed it will be necessary to check periodically for realignment and tightening of all connections.
4. Once all tests are completed, enjoy the performance of your new Volant Air Intake System.

**CARE AND CLEANING**

Check the cotton reusable filter periodically and remove any excessive dirt build-up by tapping the filter on the ground and brushing off the loosened dirt. Clean the filter by using Volant's Filter Recharger Kit. Volant's Filter Recharger Kit is designed to restore original air flow. Re-oil every 10,000 miles without cleaning to improve filtering in sand and dirt. Clean only when dirt is very excessive or 50,000 miles.

**15850 INSTALLATION**

**List of component parts (please confirm that you have all parts before starting the installation)**

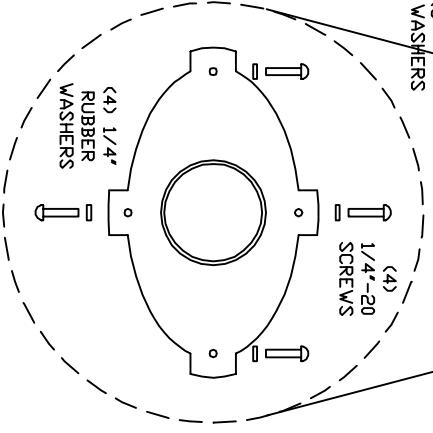
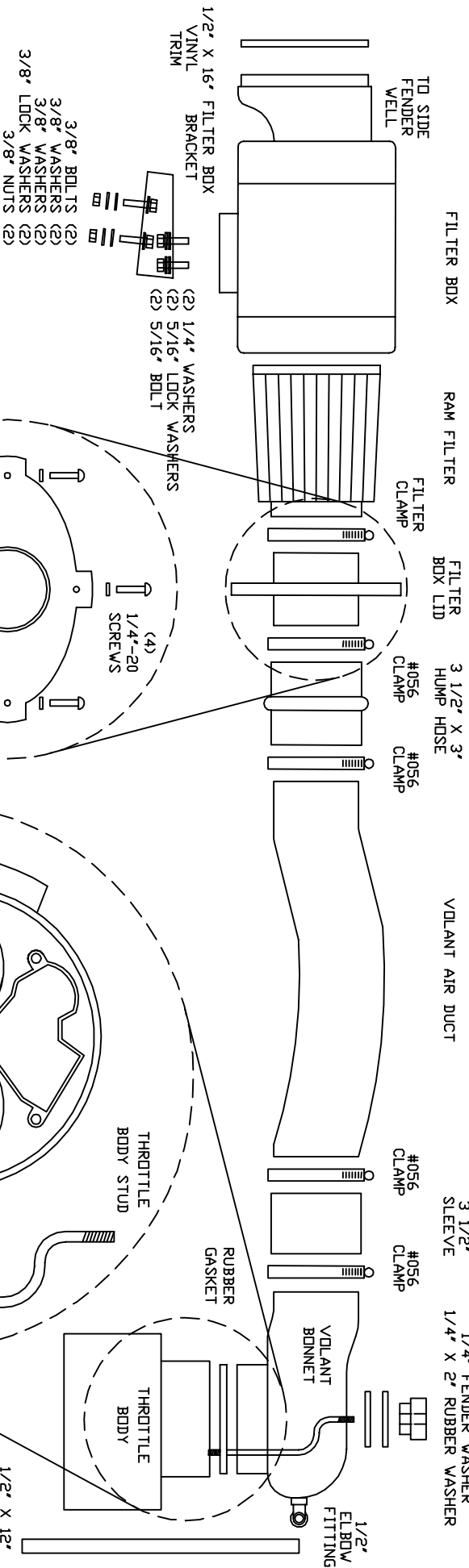
1 FILTER BOX	1 1/4" X 2" RUBBER WASHER
1 FILTER BOX LID	4 1/4" RUBBER WASHERS
1 VOLANT BONNET	2 3/8" NUTS
1 VOLANT AIR DUCT	1 ROUND KNURLED NUT
1 RAM FILTER W/CLAMP	1 RUBBER GASKET
4 #056 CLAMPS	1 1/2" X 16" VINYL TRIM
1 3 1/2" X 3" SLEEVE	1 1/2" ELBOW FITTING
1 3 1/2" X 3" HUMP HOSE	1 1/2" RUBBER GROMMET
2 5/16" BOLTS	
2 3/8" BOLTS	
4 1/4"-20 SCREWS	
4 3/8" WASHERS	
2 5/16" LOCK WASHERS	
2 3/8" LOCK WASHERS	
2 1/4" WASHERS	
1 1/4" FENDER WASHER	
1 THROTTLE BODY STUD	
1 FILTER BOX BRACKET	
1 1/2" X 12" BREATHER HOSE	



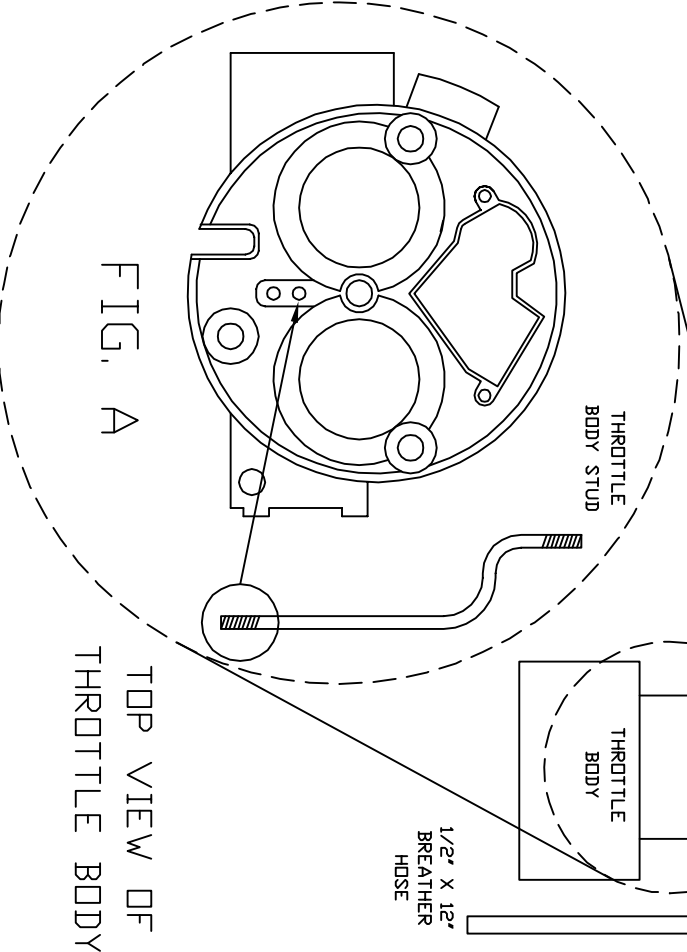
VOLANT AIR INTAKE SYSTEMS  
 PART NO.: 15850  
 INSTALLATION INSTRUCTIONS  
 WWW.VOLANTPERFORMANCE.COM  
 TECH: (909) 476-7225

15850 PARTS LIST

1	FILTER BOX	1	3 1/2" HUMPH HOSE	2	1/4" WASHER	2	3/8" NUTS
1	FILTER BOX LID	2	5/16" BOLTS	1	1/4" FENDER WASHER	1	ROUND KNURLED NUT
1	VOLANT BONNET	2	3/8" BOLTS	1	THRITTLE BODY STUD	1	RUBBER GASKET
1	VOLANT AIR DUCT	4	1/4"-20 SCREWS	1	FILTER BOX BRACKET	1	1/2" X 16" TRIM
1	RAM FILTER W/CLAMP	4	3/8" WASHERS	1	1/2" BREATHER HOSE	1	1/2" ELBOW FITTING
4	#056 CLAMPS	2	5/16" LOCK WASHERS	1	1/4" X 2" RUBBER WASHER	1	1/2" RUBBER GROMMET
1	3 1/2" X 3" SLEEVE	2	3/8" LOCK WASHERS	4	1/4" RUBBER WASHERS		



FRONT VIEW OF  
 FILTER BOX LID



TOP VIEW OF  
 THRITTLE BODY

