



INSTALLATION INSTRUCTIONS

ATV SNOW PLOW

Mounting Kit: PN 37851
Application: HONDA 400

Your safety, and the safety of others, is very important. To help you make informed decisions about safety, we have provided installation and operating instructions and other information on labels and in this guide. This information alerts you to potential hazards that could hurt you or others. It is not possible to warn you about all potential hazards associated with this product, you must use your own good judgment.

CARELESS INSTALLATION AND OPERATION CAN RESULT IN SERIOUS INJURY OR EQUIPMENT DAMAGE. READ AND UNDERSTAND ALL SAFETY PRECAUTIONS AND OPERATING INSTRUCTIONS BEFORE INSTALLING AND OPERATING THIS PRODUCT.

This guide identifies potential hazards and has important safety messages that help you and others avoid personal injury or death.

WARNING and **CAUTION** are signal words that identify the level of hazard. These signal words mean:

▲ WARNING signals a hazard that could cause serious injury or death, if you do not follow recommendations.

CAUTION signals a hazard that may cause minor to moderate injury, if you do not follow recommendations.

This guide uses **NOTICE** to call attention to important mechanical information, and **Note**: to emphasize general information worthy of special attention.

▲WARNING

SEVERE INJURY OR DEATH MAY RESULT IF YOU IGNORE ANY OF THE FOLLOWING.

- **Read the Plow Operator's Manual, the Winch Operator's Manual, and all warning labels before operating.**
- **Operate ATV at a walking speed with the blade installed. Do Not exceed 5mph (8 km/h) even with the blade up.**
- **Plow Cautiously, impact with a hidden or stationary object may cause the ATV to stop suddenly or go out of control.**
- **Do Not operate the ATV on slopes greater than 10° with the plow installed.**
- **Do Not stand or ride on the plow.**
- **Stay clear of moving parts and joints. Keep others away when operating or adjusting plow.**
- **Inspect the plow mechanism, fasteners, cable, and adjustments before operating. Replace all worn or damaged parts before operating.**
- **Lower the plow to the down position before leaving the ATV unattended.**

TOOLS REQUIRED:

Ratchet

Sockets: 7/16, 1/2, 9/16"

Wrenches: 7/16, 1/2, 9/16"

Phillips Screwdriver (optional)

PARTS LIST:

	<u>PART NO.</u>	<u>QUANTITY</u>	<u>DESCRIPTION</u>
Mounting kit parts:	1827	1	3/8-16 x 1" Hex Bolt
	2002	4	5/16" Nylock Nut
	6227	2	1/4" Nylock Nut
	6779	1	3/8" Nylock Nut
	35391	2	J-Bolt
	39522	1	Frame Mounting Bracket
	60870	2	5/16" U-Bolt (5/16-18 x 1 1/4 x 2)
	62845	1	J-Bolt Mount

1. Frame Mounting Bracket Installation:

Before installing the Frame Mounting Bracket, remove the "break-off" portion as shown in Figure #1. This piece is only use on the Honda model 300 as a spacer, it is not use on this Honda 400 application, so discard it.

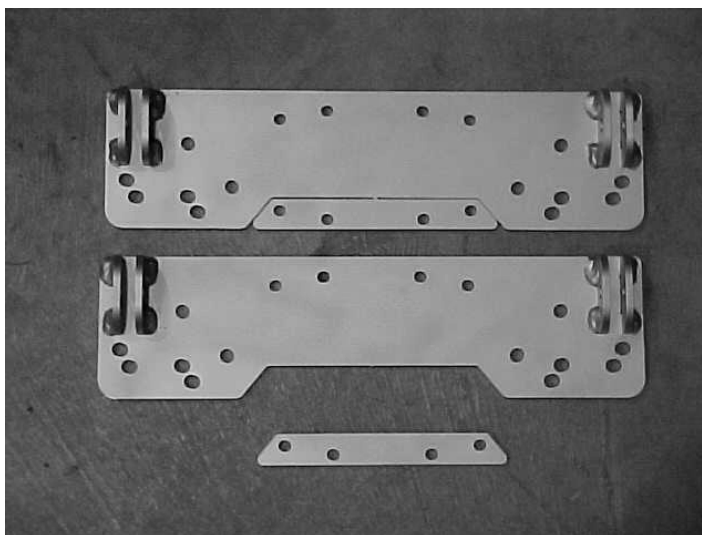


FIGURE #1: REMOVING THE "BREAK-OFF" PIECE

CAUTION

REMOVE THE "BREAK-OFF" PORTION FROM THE MOUTING BRACKET. IF THIS IS NOT DONE, DAMAGE TO BIKE CAN OCCUR IF THIS PIECE BECOMES TWISTED AND THEN GETS SNAGS OR CAUGHT ON SOMETHING ON THE GROUND AS THE BIKE IS TRAVELING.

Under the frame, push the two 5/16" U-bolts down and over the curved frame tubes as shown in Figure #2. Then, raise the Frame Mounting Bracket into position and guide the U-bolts into the frame bracket, using the holes as indicated in Figure #3. Notice that not all the holes will be used in the attachment of the Frame Mounting Bracket to the frame. This is because this bracket is use on other bikes that use the other holes. Use only the holes as shown in Figure #3.

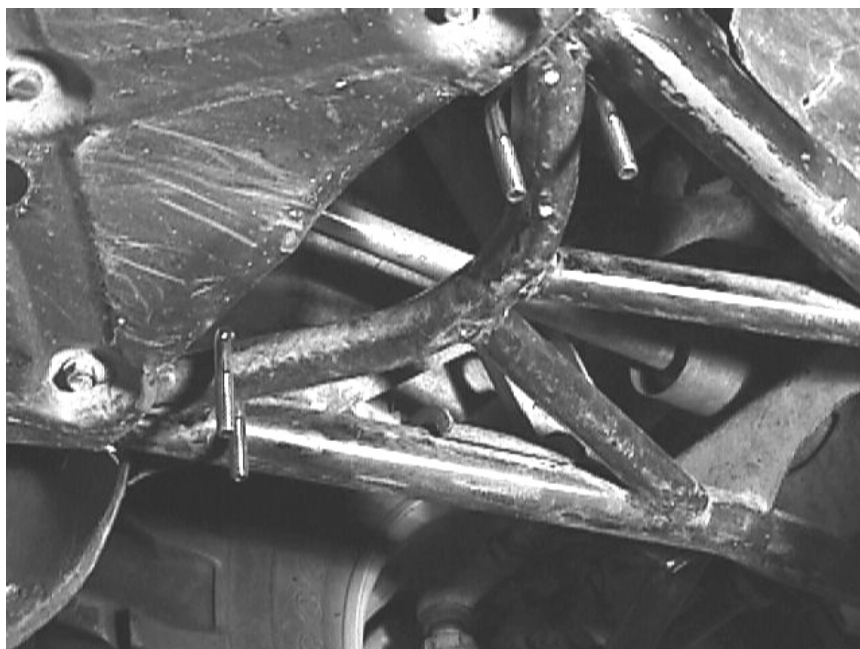


FIGURE #2: INSTALLING U-BOLTS ONTO FRAME

Install the 5/16" Nylock nuts onto the U-bolts and torque to approximately 15ft.-lb (20 N-m). The bracket should fit to the frame as shown in Figure #4.

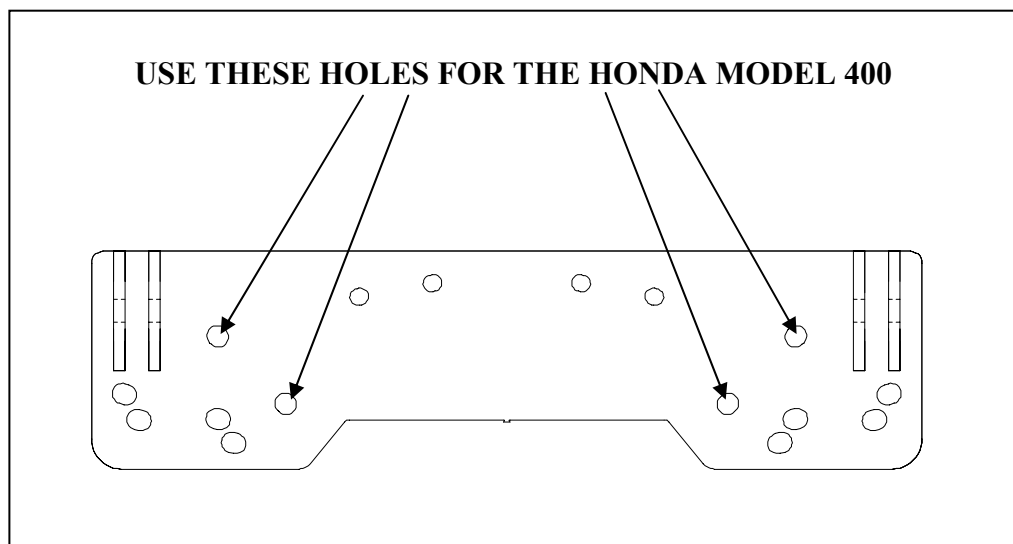


FIGURE #3: FRAME MOUNTING HOLE LOCATIONS

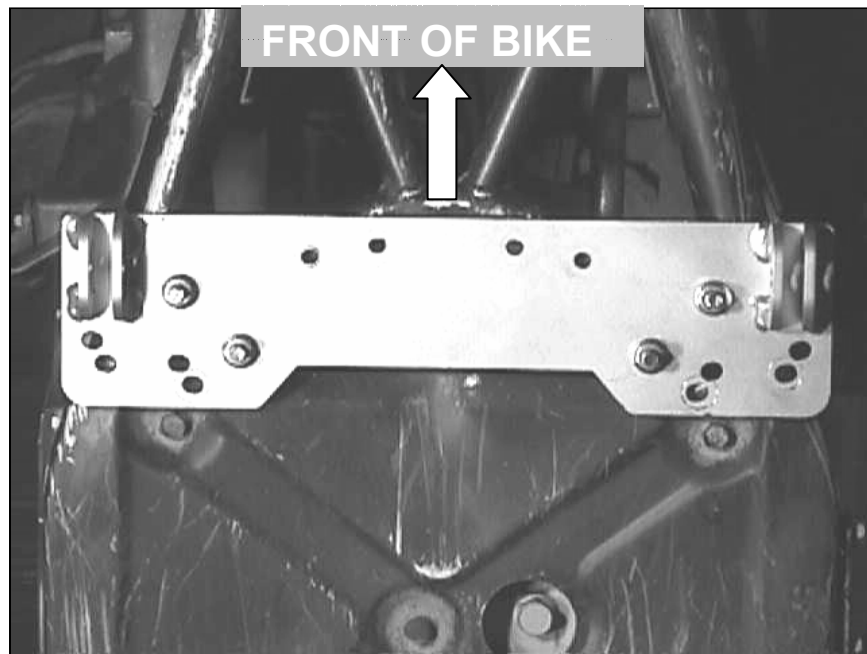


FIGURE #4: FRAME MOUNT INSTALLATION

CAUTION

When using a winch with this plow, read your winch operator manual before proceeding with this installation. A roller fairlead must be used for lifting and lowering the plow. Cable damage will occur if a roller fairlead is not used.

2. Plow Installation:

Slide the plow into position with the tubes under the. Lift the end of the tube assembly into position so the holes in the Tube Wings line up with the 3/8" holes in the frame bracket. A Phillips head screwdriver may be used to align the holes. Insert both 3/8" pins and hook the retaining clips on the ends of the pins to secure the plow to the ATV. If it is determined that the Plow is not straight with respect with the ATV, then the nuts on the Frame Mounting Bracket should be loosened and the plow adjustments made to make it straight. Then retighten and torque the nuts on the Frame Mounting Bracket to approximately 15ft.-lb (20 N-m).

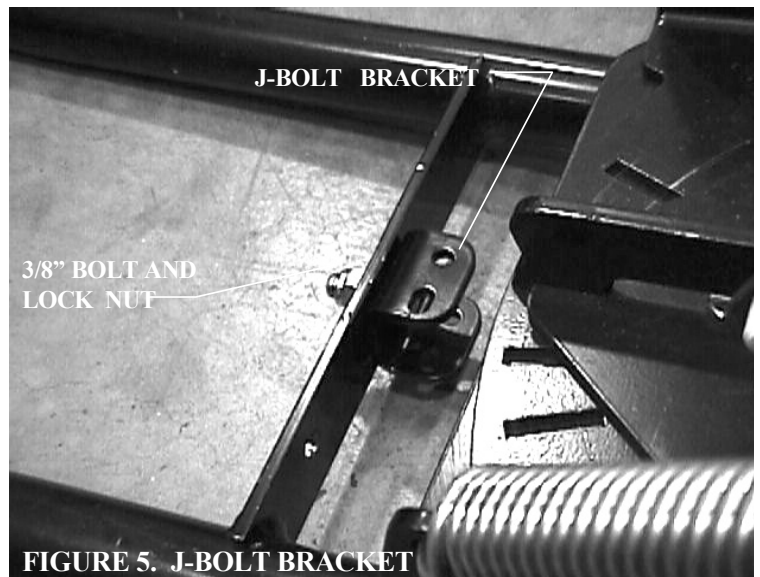
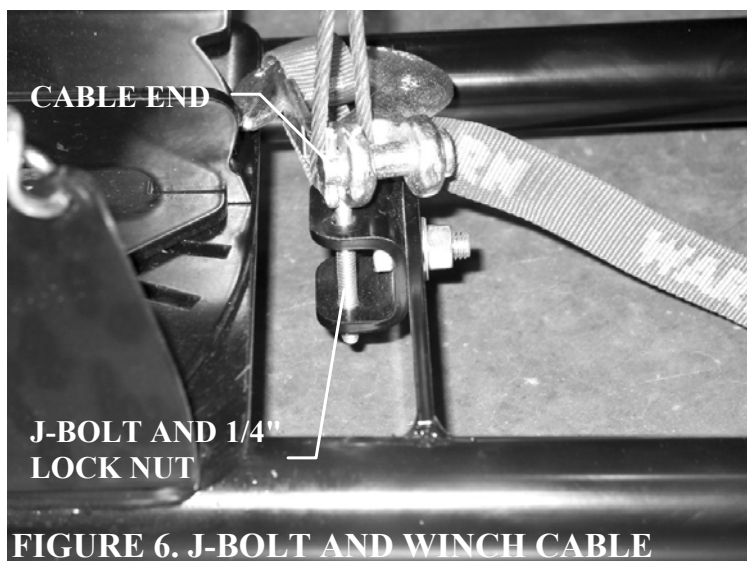


FIGURE 5. J-BOLT BRACKET

Attach the J-bolt bracket to the center hole in the plow cross member using a 3/8" dia x 1" long bolt as shown in figure 5. The bracket should be mounted on the blade side of the crossmember with the side flanges parallel to the ground. Terminate the with a 3/8" dia nylock nut. Tighten the bolt and nut to recommended torque of 20 ft-lb (28 N-m).

Run the winch cable over the roller fairlead and down to the J-bolt bracket. Using a 1/4" dia J-bolt, hook the loop on the end of the winch cable and slide the threaded end of the J-bolt into the slotted hole in the J-bracket. Terminate the end of the J-bolt with a 1/4" dia nylock nut. Tighten the nut until the winch cable is snug inside the J-bolt as shown in figure 6.

Note: Do not remove the winch hook installed on the end of the winch cable, simply slide it out of the way.



CAUTION

The purpose of the J-bolt is to break the connection between the plow and ATV when the plow is subjected to high forces that could damage the plow or vehicle. The plow will drop instantly if the J-bolt breaks, so be sure there are no bystanders when operating the plow.

Instances when the J-bolt might break are:

- . If the plow is raised too high and stalls.
- . If the operator is trying to lift too much material with the plow blade.

In general, do not raise the top of the plow blade above the headlights of the vehicle. If the plow stalls, stop the winch immediately and lower the plow. After pushing material with the plow, backup the ATV prior to raising it. If the J-bolt breaks, replace it with the spare hardware found in this kit. Read the Plow Operators Guide for more information.

THE INSTALLATION SHOULD NOW BE COMPLETE.

READ THE OPERATOR'S MANUAL PRIOR TO USE OF THIS PRODUCT.