



INSTALLATION INSTRUCTIONS

Trans4mer Mounting Kit 60766 For Jeep Cherokee, Wagoneer, Comanche (down size)

As you read these instructions, you may see **NOTES**, **CAUTIONS** and **WARNINGS**. Each message has a specific purpose. **NOTES** are additional information to help you complete a procedure. **CAUTIONS** are safety messages that indicate a potentially hazardous situation which, if not avoided, may result in minor or moderate injury. A **CAUTION** may also be used to alert against unsafe practice. **WARNINGS** are safety messages that indicate a potentially hazardous situation, which, if not avoided could result in serious injury. **CAUTIONS** and **WARNINGS** identify the hazard, indicate how to avoid the hazard, and advise of the probable consequence of not avoiding the hazard. **PLEASE WORK SAFELY!**

NOTE: This installation requires some drilling. Holes will need to be drilled for 7/16" and 1/2" fasteners. Minor modifications may be required due to variations between vehicles.

PARTS LIST

PART NO.	QUANTITY	DESCRIPTION
29365	1	Tube Assembly, 1.50 "
29366	1	Tube Assembly, 2.50 "
60764	2	Side Member
39646	2	Lower Bracket
39650	1	Bracket Assembly, LH
39651	1	Bracket Assembly, RH
39761	1	Brace, LH
39762	1	Brace, RH

TORQUE SPECIFICATIONS

BOLT SIZE

3/8 inch
7/16 inch
1/2 inch

TORQUE

30 lb. ft. (40.7 N-m)
50 lb. ft. (67.8 N-m)
75 lb. ft. (101.7 N-m)

This WARN Trans4mer system can be customized to give your vehicle a wide variety of looks, front-end protection and winch mounting capability. The system starts with this strong two-tube grille guard that

attaches to the vehicle with brackets designed by Warn Engineers to handle up to a 9000 lb. winch. It is durable and good looking as a stand-alone grille guard, but can be easily upgraded with some great options! You can add a third large size tube (light bar) that adds even more protection and includes tabs for mounting auxiliary lights. The tubes can be mounted in a variety of positions to achieve the look and function that you desire. You can mount a winch carrier bracket that provides a permanent mount for a Warn Winch. You may also add a receiver bracket that will handle the Warn Multi-Mount winch system, a draw bar or any other accessory that fits the square 2 inch receiver tube. Finally, brush guards that protect the headlights and front corners of the truck can be easily added to any of the options above.

NOTE: Follow these instructions step by step for fastest installation. Do not securely tighten bolts until directed to do so.

1. Locate the vacuum cannister that is behind the bumper on the passenger side. Disconnect the vacuum line from the cannister.
2. Remove the plastic air dam (if the vehicle has one) from the bottom of the bumper.
3. Remove the bumper.
4. Remove the triangular-shaped bumper mounting brackets from the vehicle. Remove the nut clips from the vehicle (two per side) and discard.
5. Attach the LH and RH bracket assemblies, lower brackets and bumper mounting brackets to the vehicle. **See photos 1 & 2.** Use 7/16 x 1-1/4 bolts to attach the bracket assemblies to the front of the crossmember. Use two large flat washers per bolt, one under the head of the bolt and one inside the cross member under the lock washer. If you cannot get the lock washers into position on the driver's side, place them between the bolt heads and flat washers instead. **Use the nuts with handles inside the cross member on the driver's side.** Use the 1/2 x 1-1/2 bolts to attach bracket assemblies, lower brackets and bumper mounting brackets to the tabs coming off of the crossmember.

NOTE: HEAVY WINCH LOADS MAY CAUSE DAMAGE TO YOUR VEHICLE IF ALL SIX 1/2 INCH FASTENERS ARE NOT INSTALLED. In order to install the center fasteners, you must drill a hole through the vehicle's tabs and through the bumper mounting brackets. Reinstall the factory bolts at the back of the bumper mounting brackets. Securely tighten all fasteners.



WARNING



Drilling operations can cause flying metal chips. **WEAR SAFETY GOGGLES.** Flying metal chips can cause eye injury.

Photo 1 (driver's side)





Photo 2 (passenger's side)



6. Measure from outside leading edge to outside leading edge of the bracket assemblies. This should be 32 inches or slightly less. If this measures more than 32 inches, loosen the 7/16" fasteners and remove the 1/2" nuts and lock washers. Pull the 1/2" bolts out of the bracket assemblies, and slide the brackets inboard. Use the provided flat washers between the brackets and vehicle's tabs to shim as necessary. **Securely tighten all fasteners.**
7. Attach the bumper to the mounting brackets. **Securely tighten all fasteners. Note: Be sure to reattach the vacuum line to the vacuum canister.**

- Attach the side members to the inside of the lower brackets. The 7/16 x 1-1/2 bolts are used at the forward holes. **Leave the fasteners hand tight.**
- Use the top two square holes on the side members to mark the bracket assemblies for drilling. Remove the side members and drill the brackets for 7/16" fasteners.

	<u>WARNING</u>
	Drilling operations can cause flying metal chips. WEAR SAFETY GOGGLES. Flying metal chips can cause eye injury.

- Attach the side members to the bracket assemblies and lower brackets (**see note**). Assemble the 2-1/2" cross tube to the top of the side members. Assemble the 1-1/2" cross tube to the side members at the upper hole locations. **Note: If brush guards are being installed, cross tubes, side members and brush guards must be assembled before attaching side members to brackets.** See brush guard instructions for installation. **Securely tighten all fasteners.**
- DIAGONAL BRACES ARE PROVIDED FOR USE WITH A WINCH CARRIER OR FRONT RECEIVER.** The braces attach to the bottom of the carrier or receiver (**see figures 1, 2 and photo 3**), and inside the lower brackets and side members. The braces attach here at the forward holes. **Securely tighten all fasteners if braces are installed.**

Figure 1

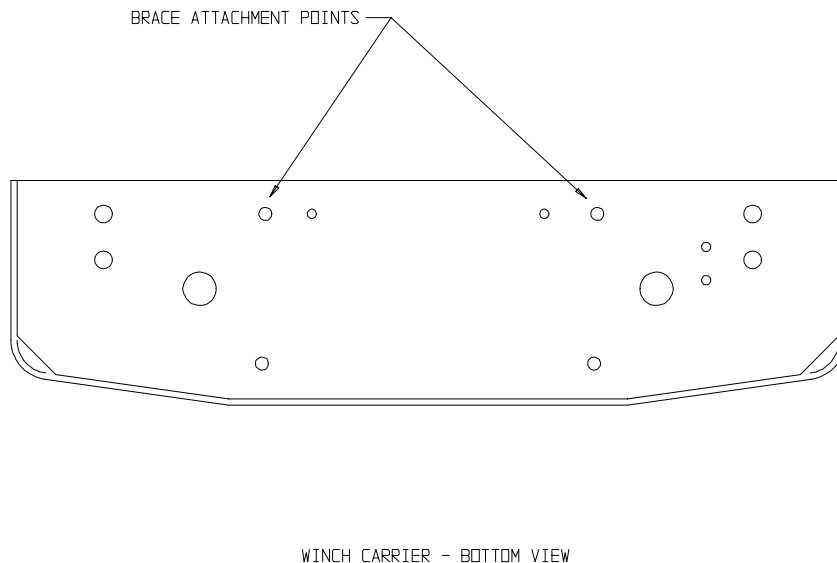
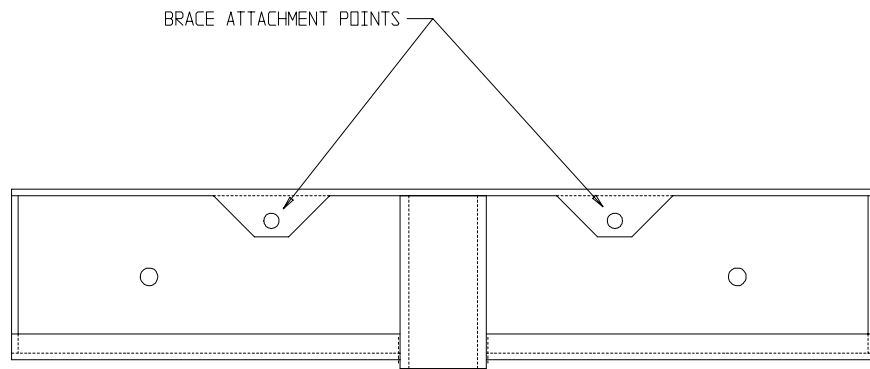


Figure 2



FRONT RECEIVER - BOTTOM VIEW

Photo 3 (brace attachment – winch carrier to side member)



12. Trim the air dam as necessary to clear side members and braces. Attach the air dam to the bottom of the bumper.