



INSTALLATION INSTRUCTIONS ATV WINCH MOUNT

Mount Kit: PN 63811

Application: SUZUKI VINSON 500, 4x4,

Your safety, and the safety of others, is very important. To help you make informed decisions about safety, we have provided installation and operating instructions and other information on labels and in this guide. This information alerts you to potential hazards that could hurt you or others. It is not possible to warn you about all potential hazards associated with this product, you must use your own good judgment.

CARELESS INSTALLATION AND OPERATION CAN RESULT IN SERIOUS INJURY OR EQUIPMENT DAMAGE. READ AND UNDERSTAND ALL SAFETY PRECAUTIONS AND OPERATING INSTRUCTIONS BEFORE INSTALLING AND OPERATING THIS PRODUCT.

This guide identifies potential hazards and has important safety messages that help you and others avoid personal injury or death.

WARNING and **CAUTION** are signal words that identify the level of hazard. These signal words mean:

WARNING signals a hazard that could cause serious injury or death, if you do not follow recommendations.

CAUTION signals a hazard that may cause minor to moderate injury, if you do not follow recommendations.

This guide uses **NOTICE** to call attention to important mechanical information, and **Note**: to emphasize general information worthy of special attention.

WARNING

SEVERE INJURY OR DEATH MAY RESULT IF YOU IGNORE ANY OF THE FOLLOWING.

- Read the Winch Operator’s Manual, ATV Operator’s Manual, and all warning labels before operating the winch and ATV.
- Stay clear of moving parts and cable. Keep others away when operating the winch.
- Inspect the winch mechanism, fasteners, and cable, before operating. Replace all worn or damaged parts before operating.
- Make sure the winch is deactivated when leaving the ATV unattended.

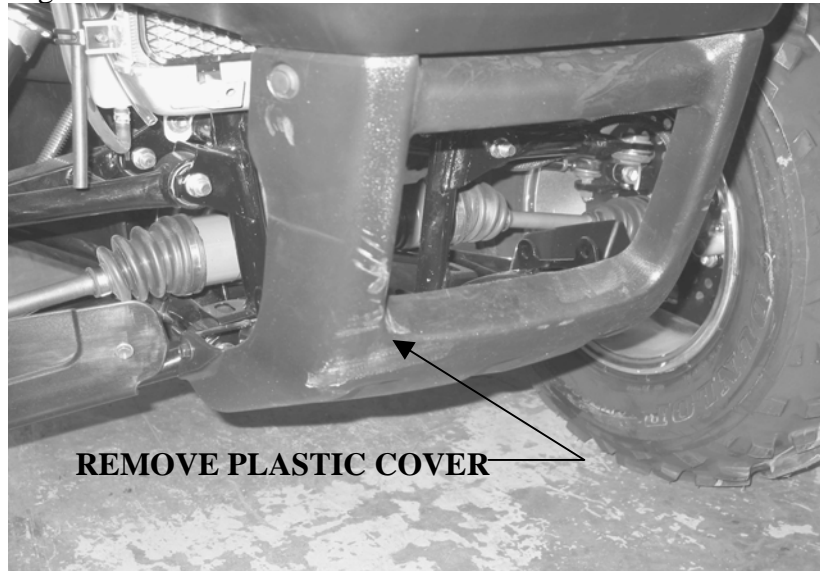
PARTS LIST:

| <u>PART NO.</u> | <u>QUANTITY</u> | <u>DESCRIPTION</u> |
|-----------------|-----------------|----------------------|
| 63812 | 1 | Winch mounting plate |
| 21445 | 2 | ¼-20 U-bolt |
| 1322 | 8 | ¼-20 hex nut |
| 1321 | 8 | ¼ lock washer |
| 7146 | 4 | ¼-20 x 3¼ hex cpvc |
| 1320 | 4 | ¼ flat washer |

INSTRUCTIONS:

1. Remove the front plastic fascia that protects the front bumper assembly, see figure 1 below.

Figure 1



2. Place the mounting plate into position on the front tube assembly as pictured in figure 2 below. Attach the mounting plate with two $\frac{1}{4}$ -20 u-bolts, hex nuts and lock washers at the rear of the mounting plate see figure 3 below. Attach the front of the mounting plate with the four $1\frac{1}{4}$ -20 x $\frac{3}{4}$ hex head capscrews, flat washer, lock washers and hex nuts, see figures 4 below.

Figure 2



FIGURE 3

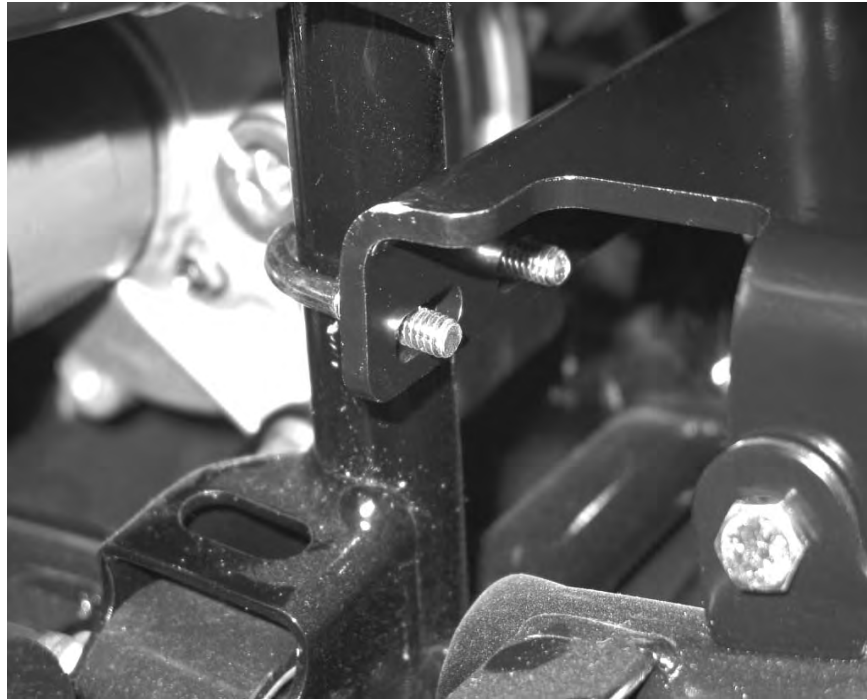
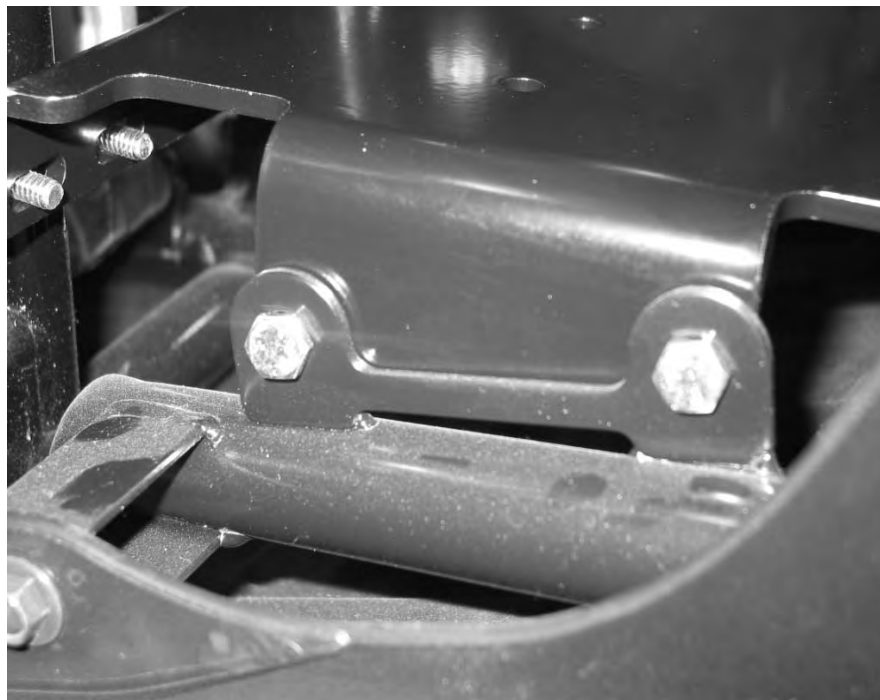


FIGURE 4



3. Place the winch into position on the mounting plate. The winch fairlead plate that comes with the winch is used in this application. The fairlead plate will be placed between the winch and the mounting plate that is attached to the ATV frame. Attach the winch and fairlead plate with four 5/16 x 1 hex head cap screws and lock washers see figure 5.

FIGURE 5



NOTE: If a roller fairlead was purchased it will be necessary to remove the cast hawse fairlead from the fairlead mounting plate and attach the roller with the hardware supplied in the roller fairlead kit.

4. Place the plastic cover back into position.



5. Make electrical connections using manual supplied with winch.