



INSTALLATION INSTRUCTIONS

ATV PLOW ACCESSORY

Plow Mounting Kit: PN 63294

Application: 2002 + Arctic Cat 650/500/400/375

Your safety, and the safety of others, is very important. To help you make informed decisions about safety, we have provided installation and operating instructions and other information on labels and in this guide. This information alerts you to potential hazards that could hurt you or others. It is not possible to warn you about all potential hazards associated with this product, you must use your own good judgment.

CARELESS INSTALLATION AND OPERATION CAN RESULT IN SERIOUS INJURY OR EQUIPMENT DAMAGE. READ AND UNDERSTAND ALL SAFETY PRECAUTIONS AND OPERATING INSTRUCTIONS BEFORE INSTALLING AND OPERATING THIS PRODUCT.

This guide identifies potential hazards and has important safety messages that help you and others avoid personal injury or death.

WARNING and **CAUTION** are signal words that identify the level of hazard. These signal words mean:

▲ WARNING signals a hazard that *could* cause serious injury or death, if you do not follow recommendations.

CAUTION signals a hazard that *may* cause minor to moderate injury, if you do not follow recommendations.

This guide uses **NOTICE** to call attention to important mechanical information, and **Note**: to emphasize general information worthy of special attention

▲ WARNING

SEVERE INJURY OR DEATH MAY RESULT IF YOU IGNORE ANY OF THE FOLLOWING:

- Read the Plow Operator Manual, the Manual Lift Manual, and all warning labels before operating or using your ATV plow.
- Always operate ATV at a walking speed with the blade installed. Do not exceed 8 km/h (5 mph) even with the blade up.
- Always plow cautiously, impact with a hidden or stationary object may cause the ATV to stop suddenly or go out of control.
- Never operate the ATV on slopes greater than 10° with the plow installed.
- Never stand or ride on the plow.
- Always stay clear of moving parts and joints. Keep others away when operating or adjusting plow.
- Always inspect the plow mechanism, fasteners, cable, and adjustments before operating. Replace all worn or damaged parts before operating.
- Always lower the plow to the down position before leaving the ATV unattended.

FAILURE TO SECURELY TIGHTEN ALL BOLTS ON THE PLOW, PLOW MOUNT, AND RELATED HARDWARE CAN RESULT IN PRODUCT FAILURE WHICH MAY RESULT IN VEHICLE DAMAGE AND OPERATOR INJURY OR DEATH. DOUBLE CHECK THAT ALL BOLTS AND NUTS ARE SECURELY TIGHTENED PRIOR TO USE.

THE PURPOSE OF THE J-BOLT IS TO BREAK THE CONNECTION BETWEEN THE PLOW AND THE WINCH TO PREVENT SERIOUS DAMAGE TO THE VEHICLE IF THE PLOW IS RAISED TOO HIGH. THE PLOW BLADE WILL DROP SUDDENLY IF THE J-BOLT BREAKS, SO BE SURE THERE ARE NO BYSTANDERS WHEN YOU RAISE/LOWER THE PLOW. RAISING THE TOP OF THE PLOW ABOVE THE HEADLIGHTS OF THE VEHICLE MAY CAUSE DAMAGE TO THE VEHICLE AND DEFORM OR BREAK THE J-BOLT. AVOID RAISING THE PLOW ABOVE THE VEHICLE HEADLIGHTS AS IT IS UNNECESSARY AND POTENTIALLY DAMAGING TO THE VEHICLE. IF YOU NOTICE DEFORMATION OF THE J-BOLT OR A BROKEN J-BOLT, PLEASE REPLACE IT WITH THE SPARE J-BOLT PROVIDED IN THE KIT.

PERFORM REGULAR INSPECTIONS ON THE PLOW, PLOW MOUNT, AND RELATED HARDWARE. NEVER OPERATE THE WINCH WITH DAMAGED OR MISSING PARTS. FAILURE TO FOLLOW THIS WARNING MAY CAUSE VEHICLE DAMAGE AND OPERATOR INJURY OR DEATH.

I. PARTS LIST

<i>Ref</i>	<i>Part Number</i>	<i>Description</i>	<i>Qty</i>
A1	66563	Mounting Plate	1
A2	13231	Black Zip-Tie	12
A3	62845	J-Bolt Bracket	1
B1	35391	1/4" dia J-Bolt	2
B 2	1827	3/8" dia-1" long Bolt	1
B 3	2195	3/8" Washer	1
B 4	1324	5/16" Washer	8
B5	1320	1/4" Washer	2
B 6	60870	5/16" dia-1 1/4" wide U-Bolt	4
B 7	6779	3/8" Nylock nut	1
B 8	2002	5/16" Nylock Nut	8
B 9	6725	1/4" Nylock Nut	2

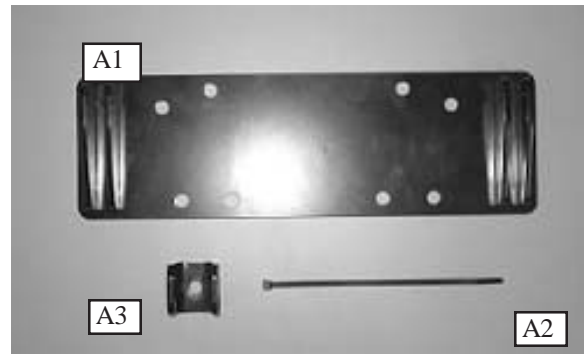


Figure 1 Kit Hardware

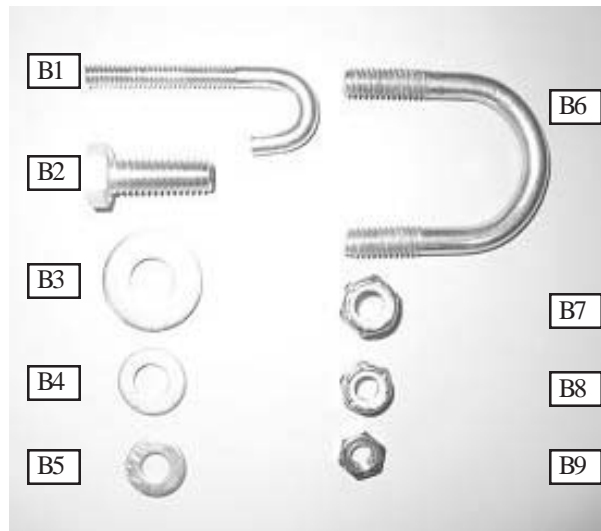


Figure 2 Kit Fasteners

II. TOOLS REQUIRED

- Ratchet
- 7/16" Socket
- 9/16" Socket
- 7/16" Wrench
- 9/16" Wrench
- 1/2" Socket or Wrench
- T-30 Torx Socket or Wrench
- Wire Cutters

The assembled mounting plate and U-bolts should look like Figure 5.

III. INSTALLATION

1. Remove the eight Torx bolts holding on the front plastic cover and skidplate under the vehicle shown in Figure 3.
2. Remove the paneling from the vehicle as shown in Figure 4.
3. Place the Mounting Plate (A1) under the frame of the vehicle just behind the A-arms. The plow pin holes in the bracket should be mounted toward the rear of the vehicle. Pull the skidplate down from the bike to get access to the vehicles frame.
4. Install all 5/16" dia-1 1/4" wide U-Bolts (B6) over the vehicle frame on each side and down through the slotted holes in the mounting plate. Place a 5/16" Washer (B4) over the ends of all U-Bolts. Attach a 5/16" Nylock Nut (B8) over the ends of all U-Bolts. Firmly tighten all bolts.
5. Hold the skid plate against the u-bolts, tap with a hammer so that an indent is made on the back of the skid plate. See figure 6.
6. Completely remove skid plate and drill holes at indents using 1/2" drill bit.
7. Remove plow mount and reattach skid plate.

NOTE. The two Torx bolts located closest to the front of the plow mount will not be reinstalled.

8. Reattach plow mount putting u-bolts through holes in plastic. See figure 7.
9. Now fully tighten the U-bolts on the mounting plate to 30ft-lbs. Pull on the Mounting Plate (A1). There should be no movement of the mounting plate, it should now be firmly attached to the vehicle.
10. Reattach paneling removed in step 2.



Figure 3 Remove Bolts

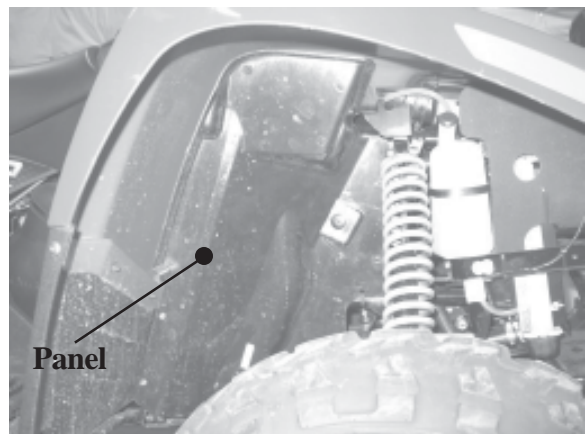


Figure 4 Remove Panel

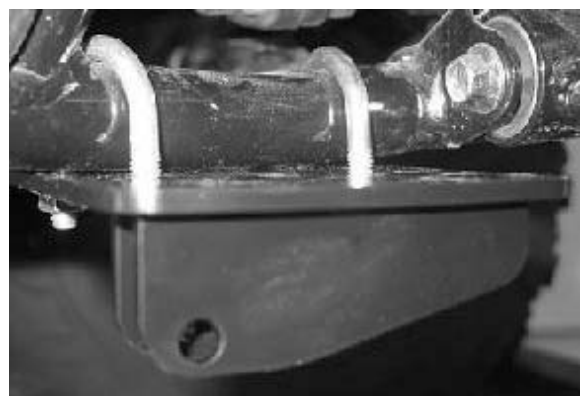


Figure 5 Mounting Plate and U-Bolts

III. INSTALLATION CONTINUED

11. The assembled mounting kit should look like Figure 7, with the skid plate under the plow mount.

12. Attach the plow to the Mounting Plate (A1) using the plow pins provided in the plow blade kit.

The Plow Mount installation is now complete. Please choose one of the plow lifting methods:

- If Using an Electric Actuator, you will need kit 63293 (Actuator Brackets) and kit 39400 (Actuator Motor). Proceed to section IV titled "Maintenance/Care".

- If using a winch, proceed to step 11.

13. Attach the J-Bolt Bracket (A3) to the plow crossmember. The J-Bolt bracket should be mounted on the side away from the vehicle and closest to the blade, and the side flanges parallel to the ground. Attach the bracket using the 3/8" dia-1" long Bolt (B2) 3/8" Nylock Nut (B7) and washer (B3). The head of the bolt should be inside the bracket. Tighten the bolt and nut securely. (Figure 7).

14. Place the threaded part of the 1/4" J-Bolt (B1) through the round holes in the J-Bolt Bracket (A3). The hook end should be on the top of the bracket and the end of the hook will sit inside one of the oblong holes in the bracket.

15. Put the winch in freespool and pull out the end of the cable. Place the loop end of the winch cable over the hook of the J-Bolt (B1). Position the metal winch hook (if one is installed) above the J-Bolt hook and out of the way of the plow operation.

16. Tighten the J-Bolt onto the J-Bolt Bracket by placing a 1/4" Washer (B5) over the end of the J-Bolt and attaching a 1/4" Nylock Nut (B9). Tighten the nylock nut until the cable loop is firmly pressed against J-Bolt bracket. The completed assembly should look like Figure 8.

NOTE: Do not remove the winch hook installed on the end of the winch cable, simply slide it out of the way.

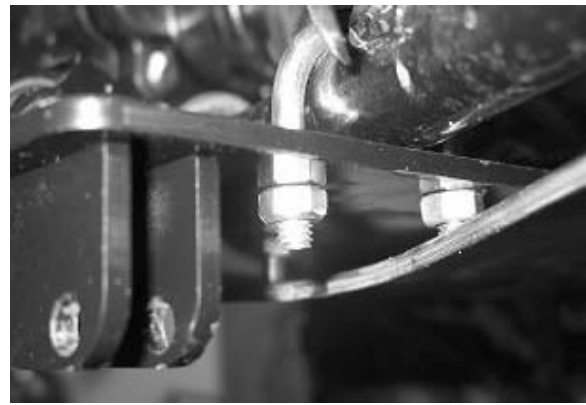


Figure 6

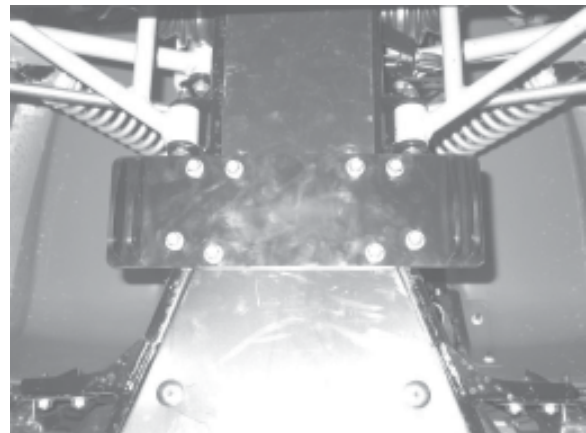
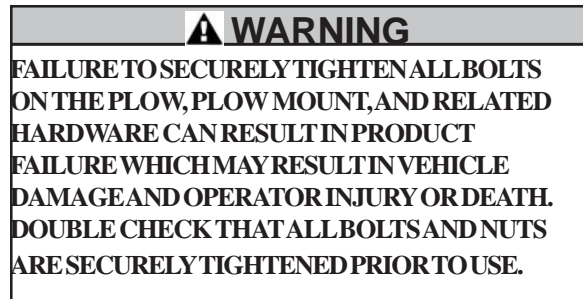


Figure 7

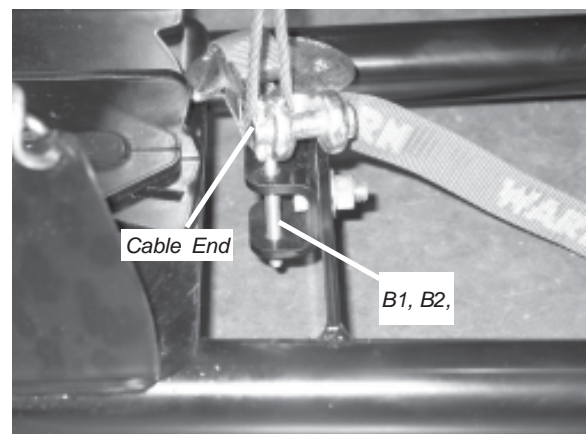


Figure 8

Plow installation is now complete. Read the vehicle's operator manual, winch operator manual, plow operator manual, and all warning labels prior to the operation of the ATV, plow, and winch. Proceed to section IV titled "Maintenance/Care".

CAUTION

THE PURPOSE OF THE J-BOLT IS TO BREAK THE CONNECTION BETWEEN THE PLOW AND THE WINCH TO PREVENT SERIOUS DAMAGE TO THE VEHICLE IF THE PLOW IS RAISED TOO HIGH. THE PLOW BLADE WILL DROP SUDDENLY IF THE J-BOLT BREAKS, SO BE SURE THERE ARE NO BYSTANDERS WHEN YOU RAISE/LOWER THE PLOW. RAISING THE TOP OF THE PLOW ABOVE THE HEADLIGHTS OF THE VEHICLE MAY CAUSE DAMAGE TO THE VEHICLE AND DEFORM OR BREAK THE J-BOLT. AVOID RAISING THE PLOW ABOVE THE VEHICLE HEADLIGHTS AS IT IS UNNECESSARY AND POTENTIALLY DAMAGING TO THE VEHICLE. IF YOU NOTICE DEFORMATION OF THE J-BOLT OR A BROKEN J-BOLT, PLEASE REPLACE IT WITH THE SPARE J-BOLT PROVIDED IN THE KIT.

IV. MAINTENANCE/CARE

- 1. Inspect all parts on the plow, plow mount, and related hardware prior to each use. Replace all hardware that appears rusted or deformed.**
- 2. Inspect all nuts and bolts on the plow, plow mount, and related hardware prior to each use. Tighten all nuts that appear to be loose. Stripped, fractured, or bent bolts or nuts need to be replaced.**
- 3. Check all cables prior to use. Replace cables that look worn or frayed.**
- 4. Check all moving or rotating parts. Remove debris that may inhibit the part from moving freely.**

⚠ WARNING

PERFORM REGULAR INSPECTIONS ON THE PLOW, PLOW MOUNT, AND RELATED HARDWARE. NEVER OPERATE THE WINCH WITH DAMAGED OR MISSING PARTS. FAILURE TO FOLLOW THIS WARNING MAY CAUSE VEHICLE DAMAGE AND OPERATOR INJURY OR DEATH.