



INSTALLATION INSTRUCTIONS BUMPER MOUNTING KIT

Part Number: 70319

Application: 2005 YAMAHA KODIAK 400 and 450

Your safety, and the safety of others, is very important. To help you make informed decisions about safety, we have provided installation and operating instructions and other information on labels and in this guide. This information alerts you to potential hazards that could hurt you or others. It is not possible to warn you about all potential hazards associated with this product, you must use your own good judgment.

CARELESS INSTALLATION AND OPERATION CAN RESULT IN SERIOUS INJURY OR EQUIPMENT DAMAGE. READ AND UNDERSTAND ALL SAFETY PRECAUTIONS AND OPERATING INSTRUCTIONS BEFORE INSTALLING AND OPERATING THIS PRODUCT.

This guide identifies potential hazards and has important safety messages that help you and others avoid personal injury or death. **WARNING** and **CAUTION** are signal words that identify the level of hazard. These signal words mean:

▲WARNING signals a hazard that *could* cause serious injury or death, if you do not follow recommendations. **▲CAUTION** signals a hazard that *may* cause minor to moderate injury, if you do not follow recommendations.

This guide uses **NOTICE** to call attention to important mechanical information, and **Note** to emphasize general information worthy of special attention.

▲ WARNING

INJURY HAZARD

Failure to observe these instructions could lead to severe injury or death.

- ❑ **Always** use extreme caution when drilling on any vehicle. Make sure that all fuel lines, brake lines, electrical wires, and other objects are not punctured or damaged when / if drilling on the vehicle. Thoroughly inspect the area to be drilled (on both sides of material) prior to drilling, and relocate any objects that may be damaged. Failure to inspect the area to be drilled may result in vehicle damage, electrical shock, fire or personal injury.
- ❑ **Always** wear safety glasses when installing this kit. A drilling operation will cause flying metal chips. Flying chips can cause eye injury.
- ❑ **Always** use extreme caution when cutting and trimming during fitting.
- ❑ **Always** remove jewelry and wear eye protection.
- ❑ **Never** lean over battery while making connections.
- ❑ **Never route electrical cables:**
 - Across any sharp edges.
 - Through or near moving parts.
 - Near parts that become hot.
- ❑ **Always** insulate and protect all exposed wiring and electrical terminals.
- ❑ **Always** use appropriate and adequate care in lifting components into place.
- ❑ **Always** insure components will remain secure during installation and operation.
- ❑ **Always** tighten all nuts and bolts securely, per the installation and operation.
- ❑ **Always** perform regular inspections and maintenance on the bumper, bumper mounting brackets and related hardware.
- ❑ **Never** operate this **WARN** product with damaged or missing parts.

⚠ Caution
Moving Parts Entanglement Hazard
Failure to observe these instructions could lead to minor or moderate injury.
<input type="checkbox"/> Always take time to fully read and understand the installation and Operations Guide included with this product. <input type="checkbox"/> Never operate this product if you are under 16 years of age. <input type="checkbox"/> Never operate this product when under the influence of drugs, alcohol or medications.
Read installation and operating instructions thoroughly.

Notice
Equipment Damage
<input type="checkbox"/> Always refer to the Installation and Specification Guide, supplied in the winch kit, for all wiring schematics and specific details on how to wire this WARN product to your vehicle.
Read installation and operating instructions thoroughly.

I. TABLE OF CONTENTS

Parts List	page 2
Tools Required	page 2
Torque Specifications	page 3
Installation	page 3 - 5
Maintenance/Care	page 6

II. PARTS LIST

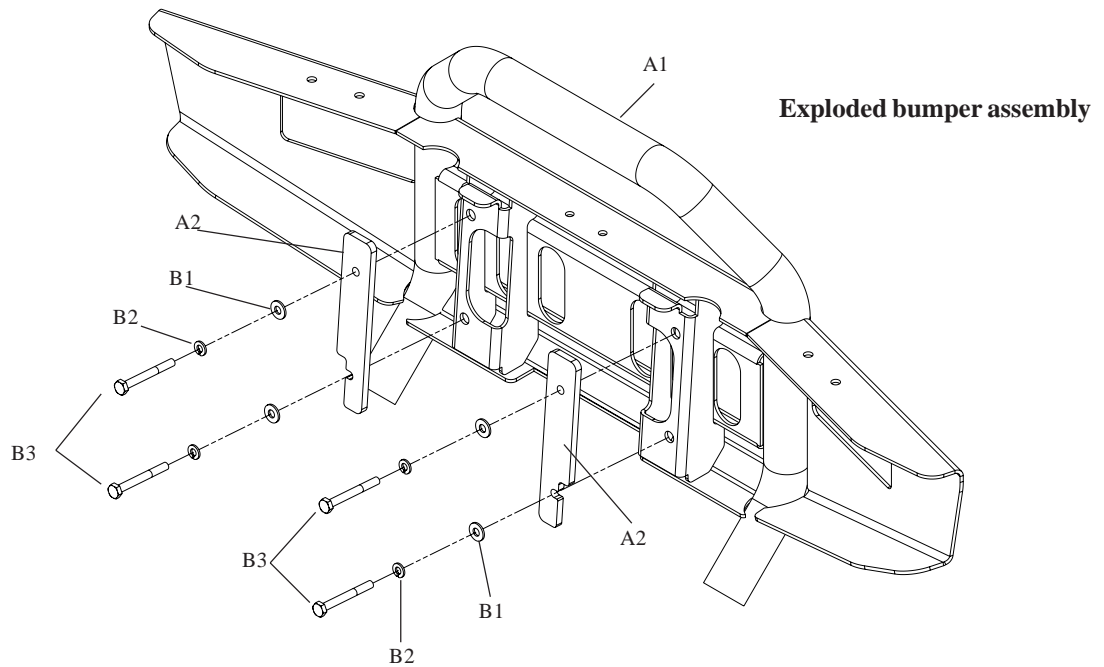
<u>Ref.</u>	<u>Part No.</u>	<u>Qty</u>	<u>Description</u>
A1	70318	1	Bumper
A2	70322	2	Strap, Bumper, Kodiak
B1	1320	8	1/4" Flat Washer
B2	1321	4	1/2" Lock Washer
B3	61515	4	1/4-20x2 1/4 Hex Head Bolt
C1	62018 (Sold Separately)		WARN Trail Lights
D1	13253	4	1/4-20x1 1/3 Hex Head Bolt
D2	62903	4	Nylon Spacer
D3	6725	4	1/4-20 Nylock Nut

III. TOOLS REQUIRED

- Ratchet: 7/16", 10mm and 12mm
- Socket: 7/16", 10 mm and 12mm
- Phillips Screwdriver

IV. TORQUE SPECIFICATIONS

1/4	8 lb. ft. (10.8 N-m)
5/16	17 lb. ft. (12.5 N-m)
3/8	30 lb. ft. (40.7 N-m)
7/16	50 lb. ft. (67.8 N-m)
1/2	75 lb. ft. (101.7 N-m)



V. Trail Light Installation (Optional)

NOTE: WARN Trail Lights are sold separately and are not included in this kit. WARN ATV Trail Lights (PN62018) should be installed at this time.

1. Insert two (2) 1/4 - 20 x 1 - 1/4" (D1) hex bolts into the bumper from the top. See Figure 1.
2. Place a spacer (D2) and flat washer (B1) on both bolts. See Figure 1.

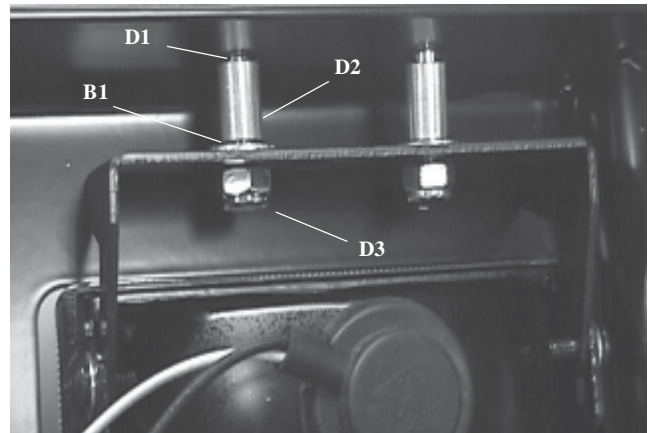


Figure 1

NOTE: More washers can be used if needed for spacing. The lights can be repositioned after the bumper is installed on the vehicle.

3. Install the light bracket and light on to the bolts and secure with 1/4" Nylock Nuts (D3). See Figure 1.

NOTE: The light mounting bracket shown is supplied with the WARN Trail lights.

4. Wiring of lights as recommended in WARN ATV Trail Light installation instructions will be done after bumper installation has been completed.



Figure 2

INSTALLATION CONT.

VI. Grab Bar Preparation:

1. Using a 10mm socket and ratchet, remove bolts securing the front skidpan to the grab bar. See Figure 4.
2. Using a 12mm socket and ratchet, remove the 8mm bolts securing the front rack to the grab bar. See Figure 5.



Figure 3

3. Using a 12mm socket and ratchet remove the 8mm bolts securing the front grab bar to the ATV frame. See Figure 6.

4. Using a 12mm socket and ratchet, loosen the bottom 8mm bolts securing front grab bar to ATV frame. See Figure 6.

5. Remove plastic rivets securing headlight plastic to grab bar. See Figure 8.



Figure 4

6. Rotate front grab bar forward. See Figure 7.

VII. Installing WARN Bumper

1. With the grab bar rotated forward, use a Phillips screwdriver to remove the screws securing the plastic bumpers to the grab bar. See figure 8.



Figure 5

2. While holding bumper up to front side of grab bar, place bumper strap on back side of grab bar. See exploded view at top of page 2.
3. Insert the 1/4 - 20 x 2 1/4" hex bolts through the holes in the straps and into the grab bar. Thread the hex bolts into the bumper's threaded inserts. See torque specifications on page 2.

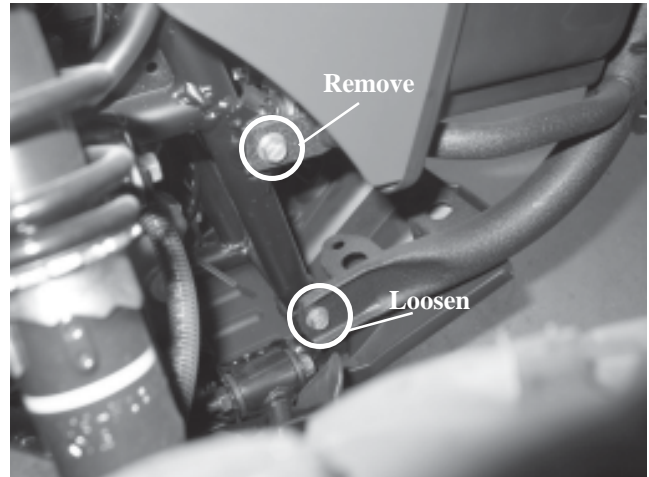


Figure 6

4. Reinstall the grab bar with the fasteners removed in section VI, steps 1, 2 and 3.
5. Reinstall plastic rivets removed in section VI, step 5.
6. Plastic bumpers will not be reused.

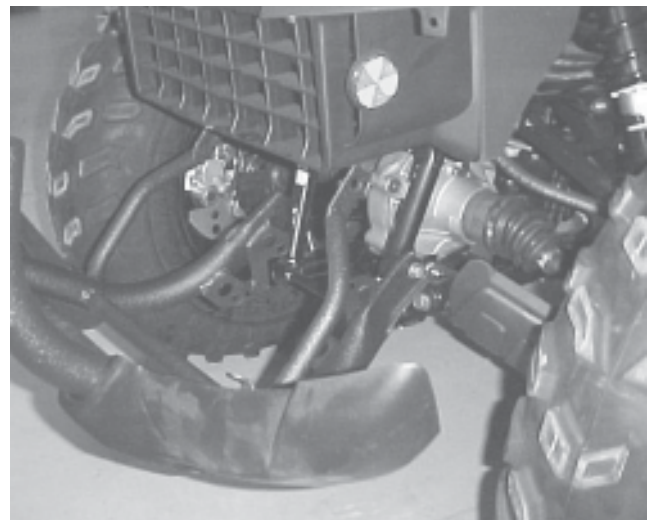


Figure 7

Bumper installation is now complete.

See light installation instructions to complete the wiring installation.

PROCEED TO SECTION TITLED "MAINTENANCE/CARE".

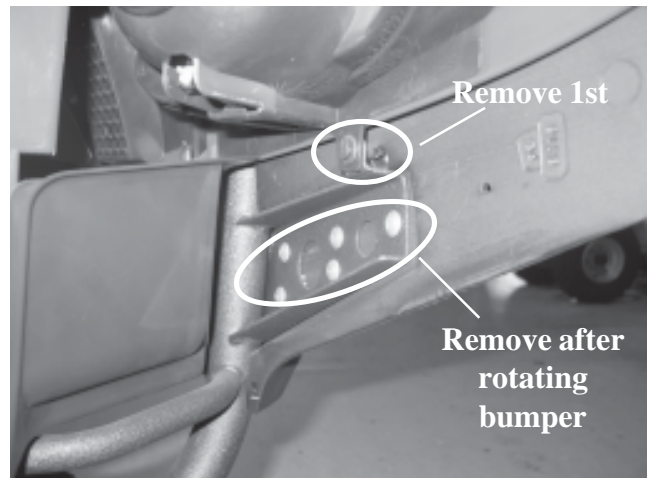


Figure 8

⚠ WARNING

FAILURE TO SECURELY TIGHTEN ALL BOLTS ON THE BUMPER AND BUMPER BRACKETS CAN RESULT IN PRODUCT FAILURE WHICH MAY RESULT IN VEHICLE DAMAGE AND OPERATOR INJURY OR DEATH. DOUBLE CHECK THAT ALL BOLTS ARE SECURELY TIGHTENED PRIOR TO USE.

VI. MAINTENANCE/CARE

1. Inspect all parts on the bumper, bumper mount, and related hardware prior to each use. Replace all hardware that appears rusted or deformed.
2. Inspect all nuts and bolts on the bumper, bumper mount, and related hardware prior to each use. Tighten all nuts that appear to be loose. Stripped, fractured, or bent bolts or nuts need to be replaced.
3. Check all cables prior to use. Replace cables that look worn or frayed.
4. Check all moving or rotating parts. Remove debris that may inhibit the part from moving freely.

⚠ WARNING

PERFORM REGULAR INSPECTIONS ON THE BUMPER, BUMPER MOUNTING BRACKETS, AND RELATED HARDWARE.