



INSTALLATION INSTRUCTIONS

SKIRT KIT


Part Number:70490


Application: Ford Super Duty

Your safety, and the safety of others, is very important. To help you make informed decisions about safety, we have provided installation and operating instructions and other information on labels and in this guide. This information alerts you to potential hazards that could hurt you or others. It is not possible to warn you about all potential hazards associated with this product, you must use your own good judgment.

CARELESS INSTALLATION AND OPERATION CAN RESULT IN SERIOUS INJURY OR EQUIPMENT DAMAGE. READ AND UNDERSTAND ALL SAFETY PRECAUTIONS AND OPERATING INSTRUCTIONS BEFORE INSTALLING AND OPERATING THIS PRODUCT.

This guide identifies potential hazards and has important safety messages that help you and others avoid personal injury or death. **WARNING** and **CAUTION** are signal words that identify the level of hazard. These signal words mean:

 **WARNING** signals a hazard that could cause serious injury or death, if you do not follow recommendations.

 **CAUTION** signals a hazard that may cause minor to moderate injury, if you do not follow recommendations.

This guide uses **NOTICE** to call attention to important mechanical information, and **Note**: to emphasize general information worthy of special attention.

WARNING

INJURY HAZARD

Failure to observe these instructions could lead to severe injury or death.

- q **Always** use extreme caution when drilling on any vehicle. Make sure that all fuel lines, brake lines, electrical wires, and other objects are not punctured or damaged when/if drilling on the vehicle. Thoroughly inspect the area to be drilled (on both sides of material) prior to drilling, and relocate any objects that may be damaged. Failure to inspect the area to be drilled may result in vehicle damage, electrical shock, fire or personal injury.
- q **Always** wear safety glasses when installing this kit. A drilling operation will cause flying metal chips. Flying chips can cause eye injury.
- q **Always** use extreme caution when cutting and trimming during fitting.
- q **Always** remove jewelry and wear eye protection.
- q **Always** insure components will remain secure during installation and operation.

Caution

Moving Parts Entanglement Hazard

Failure to observe these instructions could lead to minor or moderate injury.

- q **Always** take time to fully read and understand the installation and Operations Guide included
Read installation and operating instructions thoroughly.

NOTES

This 70490 Skirt Kit is designed for use with the 70005 Semi-Hidden Kit. It contains panels that fill the space between the bumper and the vehicle as a result of moving the bumper forward. The bumper must first be removed from the vehicle to install this kit.

I. PARTS LIST

<u>Part Number</u>	<u>Qty</u>	<u>Description</u>
70486	1	RH Endcap
70487	1	LH Endcap
70488	1	RH Skirt
70489	1	LH Skirt
70492	1	Hardware Kit

II. TOOLS REQUIRED

13mm socket wrench	7/32" hex socket (Allen) wrench
phillips screw driver	3/8" end wrench
1/8" hex socket (Allen) wrench	drill motor w/ 1/8, 3/16, 13/64" bits

III. INSTALLATION

1. The bumper must be removed before Skirt installation. Use the Semi-hidden Kit instructions as a guide.
2. Remove the upper bolts from the left and right bumper brackets. **Figure 1.**

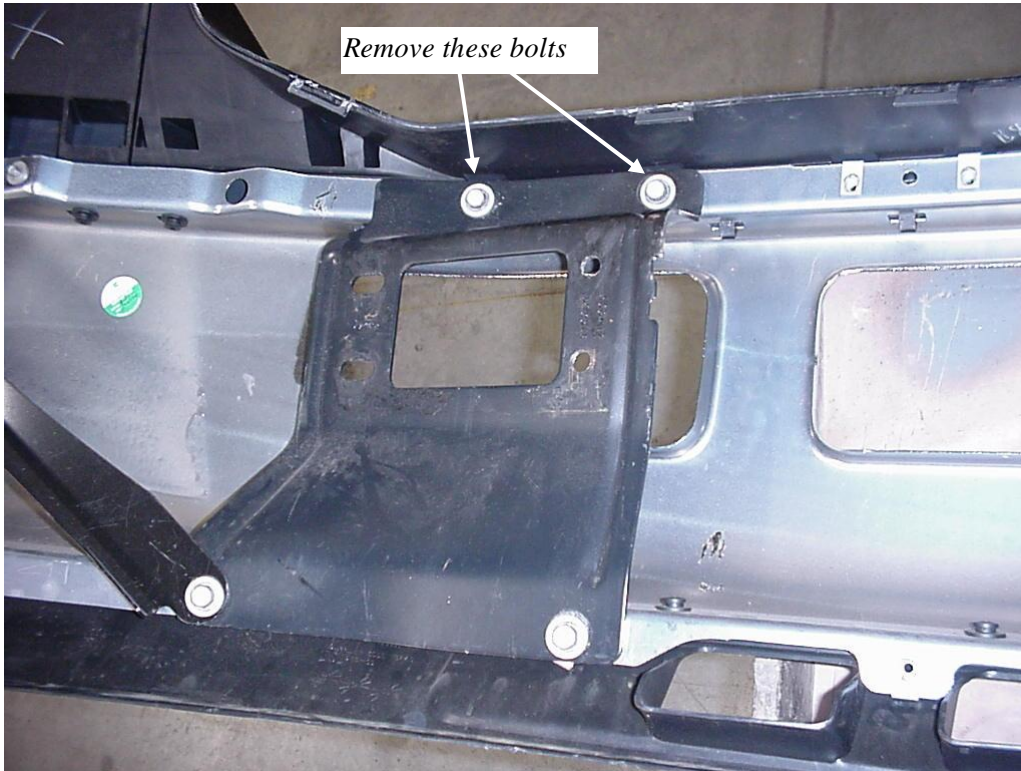


Figure 1 LH bumper bracket bolts

3. Drill a 3/16" hole through each of the four(4) dimples in the skirt mounting flanges. **Figure 2.**

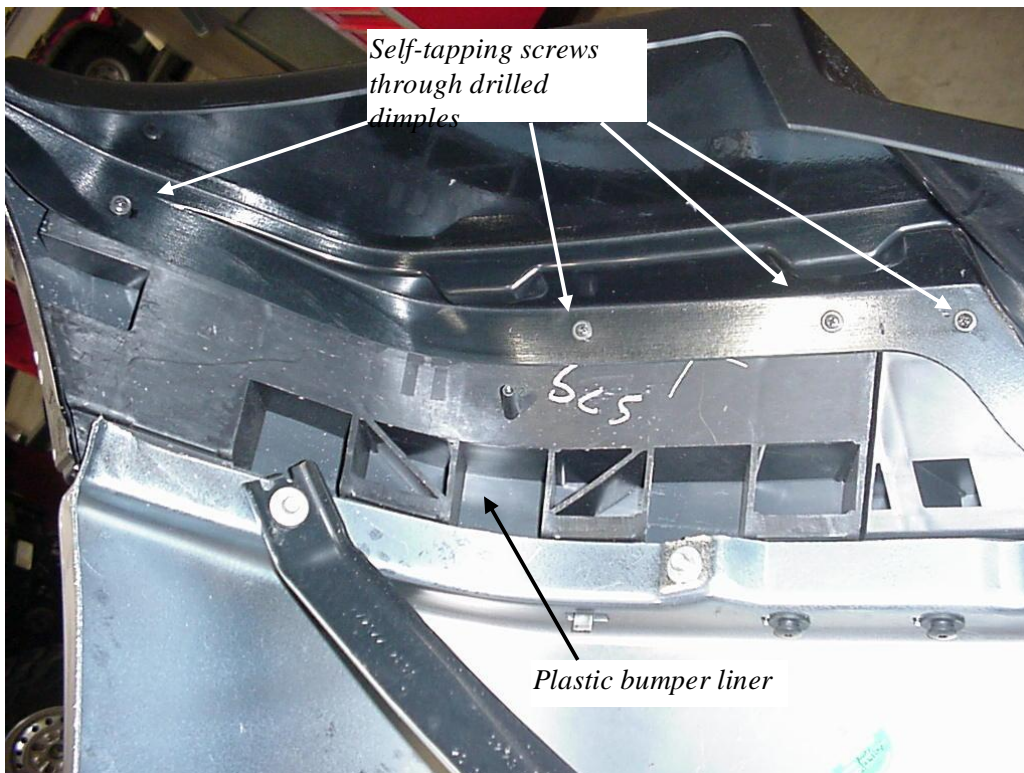


Figure 2 LH Skirt screw locations, screws installed

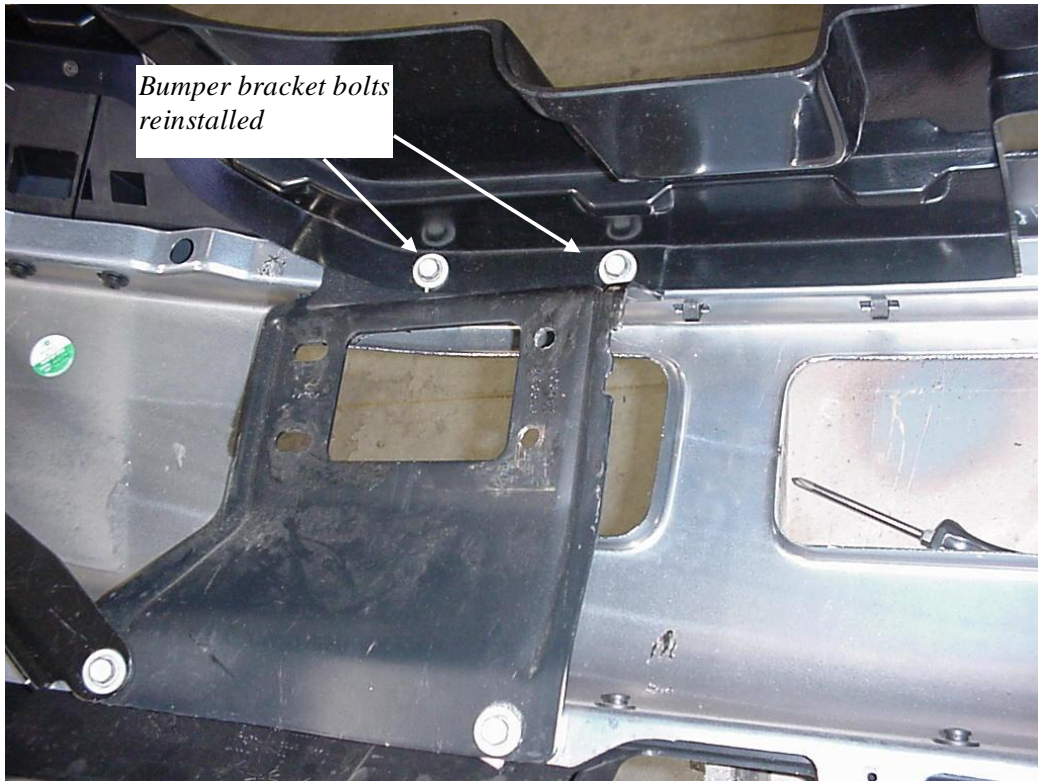


Figure 3 LH Skirt in place, bumper bracket bolts reinstalled

4. Place the Skirts against the bumper brackets and reinstall the bolts. Align the outboard corners of the skirt and bumper, hold the skirt tight against the bumper and tighten the bolts. **Figure 3**
5. Hold the Skirt in position and drill 1/8" holes into the plastic bumper liner through each of the previously drilled 3/16" holes. Install self-tapping screws in each hole and tighten. **Figure 2**



Figure 4 LH Endcap installed

6. Drill a 3/16" hole through each of the three(3) dimples in the front flange of each Endcap.
7. Hold the Endcaps in place against the bumper and mark the hole locations. Drill a 13/64" hole through each mark (two into the metal and one into the plastic). Use #10 x 5/8" screws, washers and lock nuts to attach the Endcaps. Tighten the hardware. **Figure 4**
8. Locate the Remote Control Extension supplied with the Semi-Hidden Winch Kit. Pass it through the large hole in the LH Skirt from the top. Secure it with the #10 x 1" screws, washers and lock nuts. **Figure 5**

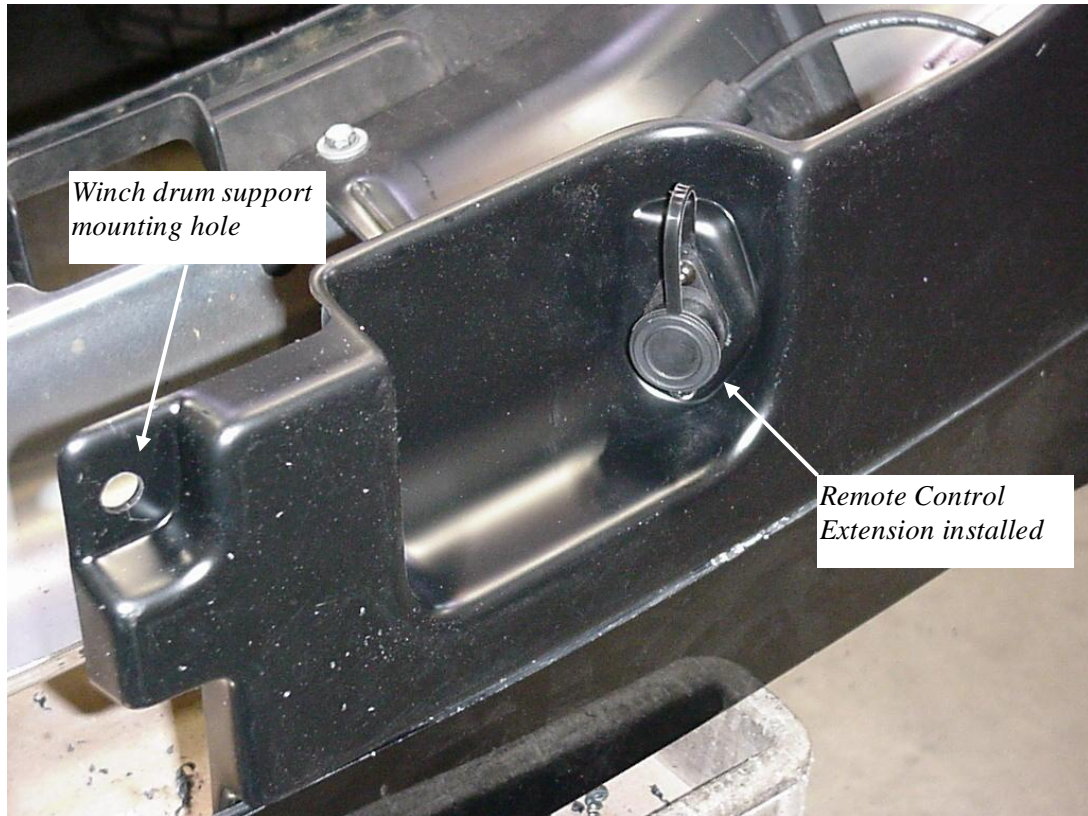


Figure 5 Remote Control Extension installed

9. Reinstall the bumper. Refer back to the Semi-Hidden Winch Kit instructions for bumper installation. Avoid pinching the Remote Control Extension wire.
10. Insert a 7/16" hex socket screw through the hole in each Skirt, into the corresponding threaded hole in the top, rear of each winch drum support (located under the lower edge of the grille). Just "snug" these screws. Do not over tighten. **Figure 5**
11. Plug the "free" end of the Remote Control Extension into the Control Pack.