



# INSTALLATION INSTRUCTIONS WINCH MOUNTING KIT, 4.0CI WINCH

Part Number: 74186

Application: Kawaski Mule 3000 & 3010

Your safety, and the safety of others, is very important. To help you make informed decisions about safety, we have provided installation and operating instructions and other information on labels and in this guide. This information alerts you to potential hazards that could hurt you or others. It is not possible to warn you about all potential hazards associated with this product, you must use your own good judgment.

**CARELESS INSTALLATION AND OPERATION CAN RESULT IN SERIOUS INJURY OR EQUIPMENT DAMAGE. READ AND UNDERSTAND ALL SAFETY PRECAUTIONS AND OPERATING INSTRUCTIONS BEFORE INSTALLING AND OPERATING THIS PRODUCT.**

This guide identifies potential hazards and has important safety messages that help you and others avoid personal injury or death. **WARNING** and **CAUTION** are signal words that identify the level of hazard. These signal words mean:

**WARNING** signals a hazard that *could* cause serious injury or death, if you do not follow recommendations. **CAUTION** signals a hazard that *may* cause minor to moderate injury, if you do not follow recommendations.

This guide uses **NOTICE** to call attention to important mechanical information, and **Note** to emphasize general information worthy of special attention.

## **WARNING**

### **INJURY HAZARD**

**Failure to observe these instructions could lead to severe injury or death.**

- ❑ **Always** use extreme caution when drilling on any vehicle. Make sure that all fuel lines, brake lines, electrical wires, and other objects are not punctured or damaged when / if drilling on the vehicle. Thoroughly inspect the area to be drilled (on both sides of material) prior to drilling, and relocate any objects that may be damaged. Failure to inspect the area to be drilled may result in vehicle damage, electrical shock, fire or personal injury.
- ❑ **Always** wear safety glasses when installing this kit. A drilling operation will cause flying metal chips. Flying chips can cause eye injury.
- ❑ **Always** use extreme caution when cutting and trimming during fitting.
- ❑ **Always** remove jewelry and wear eye protection.
- ❑ **Never** lean over battery while making connections.
- ❑ **Never route electrical cables:**
  - Across any sharp edges.
  - Through or near moving parts.
  - Near parts that become hot.
- ❑ **Always** insulate and protect all exposed wiring and electrical terminals.
- ❑ **Always** install terminal boots as directed in installation instructions.
- ❑ **Always** use appropriate and adequate care in lifting components into place.
- ❑ **Always** insure components will remain secure during installation and operation.
- ❑ **Always** tighten all nuts and bolts securely, per the installation and operation.
- ❑ **Always** perform regular inspections and maintenance on the winch, winch mount and related hardware.
- ❑ **Never** operate this **WARN** product with damaged or missing parts.

<b>⚠ Caution</b>
<b>Moving Parts Entanglement Hazard</b>
<b>Failure to observe these instructions could lead to minor or moderate injury.</b>
<input type="checkbox"/> <b>Always</b> take time to fully read and understand the installation and Operations Guide included with this product. <input type="checkbox"/> <b>Never</b> operate this product if you are under 16 years of age. <input type="checkbox"/> <b>Never</b> operate this product when under the influence of drugs, alcohol or medications.
<b>Read installation and operating instructions thoroughly.</b>

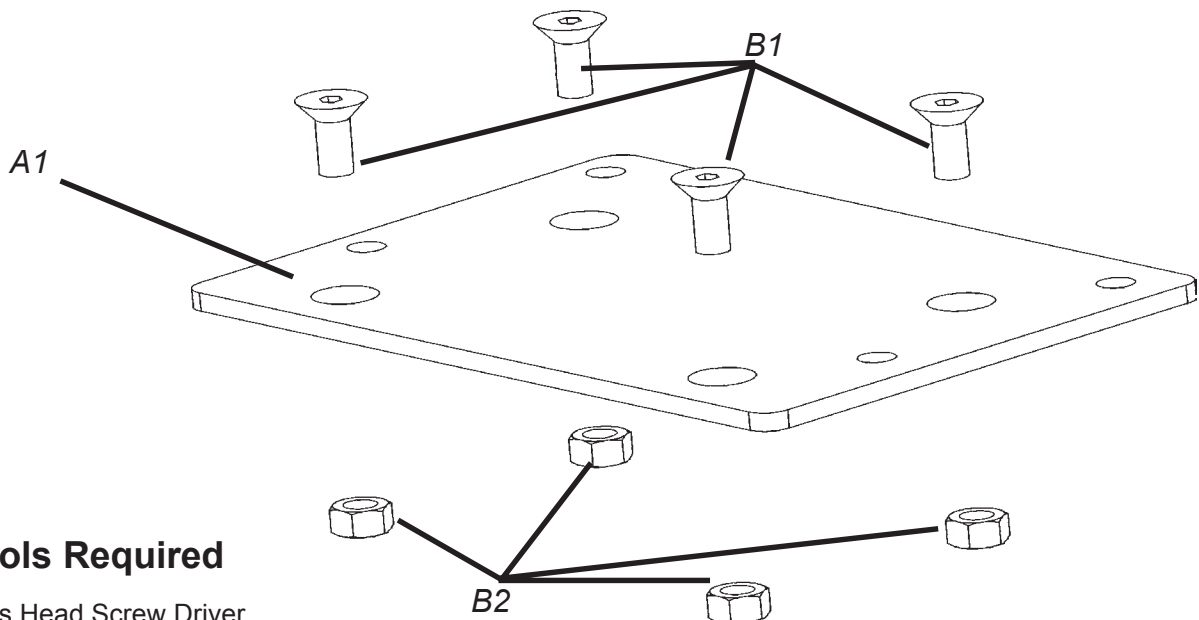
<b>Notice</b>
<b>Equipment Damage</b>
<input type="checkbox"/> <b>Always</b> refer to the Installation and Specification Guide, supplied in the winch kit, for all wiring schematics and specific details on how to wire this WARN product to your vehicle.
<b>Read installation and operating instructions thoroughly.</b>

## Table of Contents

I.	Parts List .....	2
II.	Tools Required .....	2
III.	Kawasaki Mule Installation .....	3
IV.	Maintenance/Care .....	4

## I. Parts List

<i>Ref</i>	<i>Description</i>	<i>Qty</i>
A1	Mounting Plate	1
B1	5/16-18 x 3/4 Counter Sink Bolt	4
B2	5/16-18 Locking Hex Nut	4



## II. Tools Required

- Phillips Head Screw Driver
- Ratchet
- Sockets: 7/16", 1/2", 5/8", 17mm
- Wrenches: 7/16", 1/2", 5/8" 17mm
- Allen Head Wrenches: 3/16"

### III. Kawasaki Mule Installation

Note: Please read all instruction and manuals that came with the winch and mounting kit before starting this installation. Take notice of all Warnings and Cautions.

1. Begin by disconnecting the positive (red) and negative (black) wires from the battery.
2. Remove the front bumper assembly by removing the four fasteners attaching the bumper to the vehicle see figure one and two.
3. Remove the front lower skid pan, figure three.
4. Place the mounting plate into position as shown in figure four. Attach with four 5/16-18 x 3/4 socket head counter sink bolts and locking hex nuts.



Figure 1

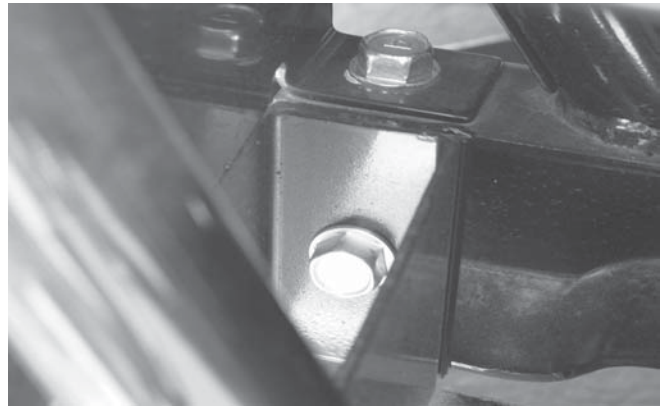


Figure 2

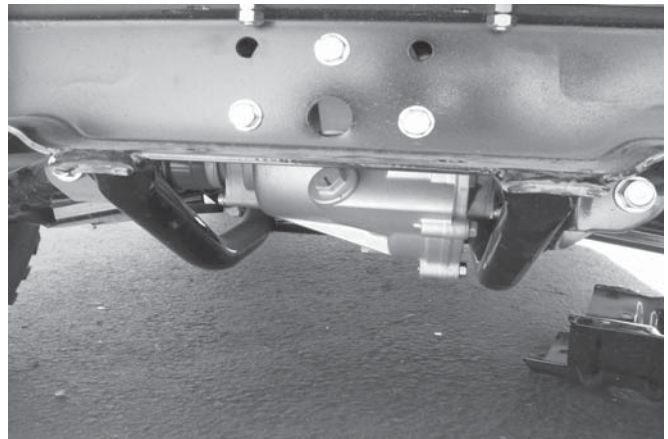


Figure 3

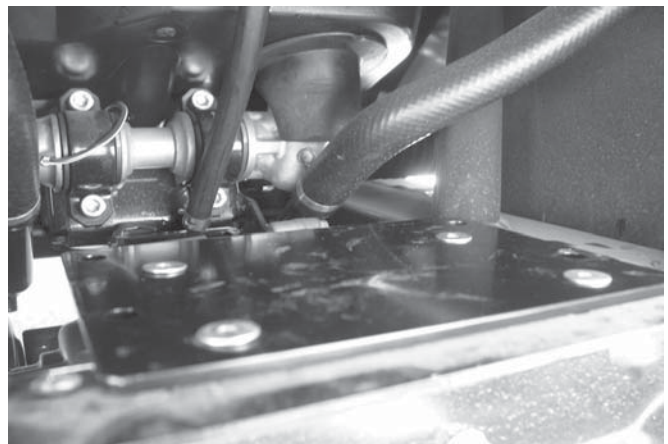


Figure 4

### III. Installation Continued

5. Place winch into position as shown, see figure five. Use the four 5/16-18 x 1 hex head bolts and lock washers that came in the winch hardware kit. Note: it may help to remove the two lower screws securing the radiator shroud. This will aid in placing the winch into position.
6. Attach the roller fairlead that came in the mounting kit to the front bumper assembly before reattaching the front bumper to the vehicle. The roller fairlead that came in the winch kit will not be used in this application. However the hardware to attach the roller fairlead to the bumper will be found in the winch kit.
7. Thread the winch cable through the fairlead rollers and attach the hook assemble.
8. Check all connections and make sure everything as been tightened securely. Replace all covers, winch installation is complete.
9. Locate the contactor near the battery, in a protected dry area.
10. After a location has been selected secure the contactor into position with the hardware that came in the winch hardware kit. Route the blue and yellow wires from the contactor location along the frame and up to the front of the vehicle. The cables will need to be routed to come out on the right side of the vehicle so they can be attached to the winch motor.
11. Route the red and black battery cables from the contactor location to the battery compartment. Do not connect at this time.
12. Make all other electrical connections using the winch manual that came in the winch package to complete the installation.

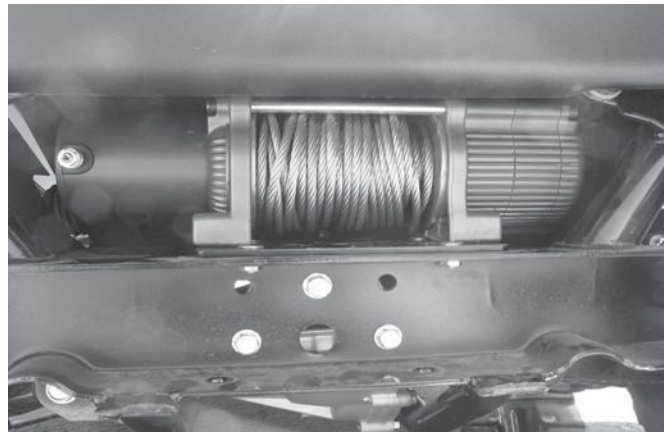


figure 5

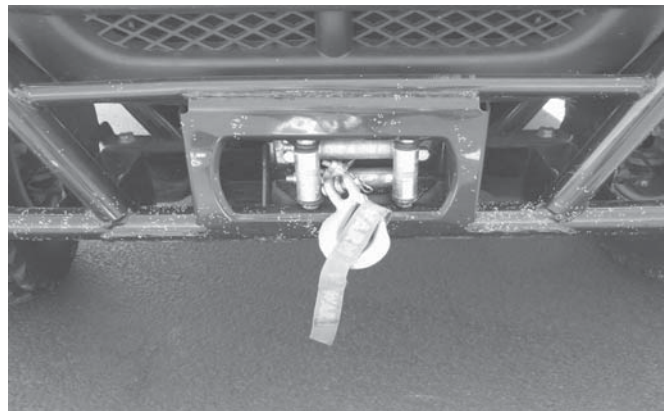


figure 6

#### **⚠ WARNING**

**Avoid all moving and potentially hot components of ATV when routing electrical cables. Avoid areas where the wiring could be pinched when components are reinstalled. Failure to do so can result in product failure which can lead to vehicle damage and operator injury or death.**

#### **⚠ WARNING**

**Tighten all nuts and bolts securely. Failure to check all nuts and bolts prior to use can result in product failure which can lead to vehicle damage and operator injury or death.**

#### **Notice**

**Please refer to the Installation and Specification Guide, supplied in the winch kit, for all wiring schematics and specific details on how to wire the winch to the ATV.**

### V. Maintenance/Care

- Inspect all metal parts on the winch, winch mount, and related hardware. Replace all that appears rusted, cracked or deformed prior to use.
- Inspect all nuts and bolts on the winch, winch mount, and related hardware prior to each use. Tighten all nuts and bolts that are loose. Missing, stripped, fractured, or bent bolts or nuts need to be replaced immediately.
- Check all cables prior to use. Replace cables that are worn or frayed.
- Check all moving and rotating parts. Remove debris that may inhibit the part from moving freely.