



# INSTALLATION INSTRUCTIONS WINCH MOUNTING PLATE

Part Number: 74249

Application: 2007 JEEP JK WRANGLER

Your safety, and the safety of others, is very important. To help you make informed decisions about safety, we have provided installation and operating instructions and other information on labels and in this guide. This information alerts you to potential hazards that could hurt you or others. It is not possible to warn you about all potential hazards associated with this product, you must use your own good judgment.

**CARELESS INSTALLATION AND OPERATION CAN RESULT IN SERIOUS INJURY OR EQUIPMENT DAMAGE. READ AND UNDERSTAND ALL SAFETY PRECAUTIONS AND OPERATING INSTRUCTIONS BEFORE INSTALLING AND OPERATING THIS PRODUCT.**

This guide identifies potential hazards and has important safety messages that help you and others avoid personal injury or death. **WARNING** and **CAUTION** are signal words that identify the level of hazard. These signal words mean:

**WARNING** signals a hazard that could cause serious injury or death, if you do not follow recommendations.

**CAUTION** signals a hazard that may cause minor to moderate injury, if you do not follow recommendations.

This guide uses **NOTICE** to call attention to important mechanical information, and **Note**: to emphasize general information worthy of special attention.

## **WARNING**

### **INJURY HAZARD**

**Failure to observe these instructions could lead to severe injury or death.**

- Always** Read the Winch Operator's Manual and all warning labels before operating.
- Always** use extreme caution when drilling on any vehicle. Make sure that all fuel lines, brake lines, electrical wires, and other objects are not punctured or damaged when/if drilling on the vehicle. Thoroughly inspect the area to be drilled (on both sides of material) prior to drilling, and relocate any objects that may be damaged. Failure to inspect the area to be drilled may result in vehicle damage, electrical shock, fire or personal injury.
- Always** wear safety glasses when installing this kit. A drilling operation will cause flying metal chips. Flying chips can cause eye injury.
- Always** use extreme caution when cutting and trimming during fitting.
- Always** remove jewelry and wear eye protection.
- Never** lean over battery while making connections.
- Never route electrical cables:**
  - o Across any sharp edges.
  - o Through or near moving parts.
  - o Near parts that become hot.
- Always** insulate and protect all exposed wiring and electrical terminals.
- Always** install terminal boots as directed in installation instructions.
- Always** use appropriate and adequate care in lifting components into place.
- Always** insure components will remain secure during installation and operation.
- Always** tighten all nuts and bolts securely, per the installation instructions..
- Always** replace all worn or damaged parts before operating.
- Never** operate this WARN product with damaged or missing parts.

## **Caution**

### **Moving Parts Entanglement Hazard**

**Failure to observe these instructions could lead to minor or moderate injury.**

- Always** take time to fully read and understand the installation and Operations Guide included with this product.
- Never** operate this product if you are under 16 years of age.
- Never** operate this product when under the influence of drugs, alcohol or medications.

**Read installation and operating instructions thoroughly.**

## **Notice**

### **Equipment Damage**

- Always** refer to the Installation and Specification Guide, supplied in the winch kit, for all wiring schematics and specific details on how to wire this WARN product to your vehicle.

**Read installation and operating instructions thoroughly.**

## NOTES (As Applicable)

If the vehicle does not have factory front tow hooks, this winch mount will require minor cutting of the inside and top of the original bumper.

If the vehicle does have factory front tow hooks, this winch mount may require opening up the factory tow hook holes. The factory tow hooks cannot be reused with this kit.

## I. TABLE OF CONTENTS

Parts List	page 2
Tools Required	page 2
Torque Specifications	page 2
Installation	page 3-11
Tips/Troubleshooting	page 12
Maintenance/Care	page 12

## II. PARTS LIST

<u>Part Number</u>	<u>Qty</u>	<u>Description</u>
74635	1	Hardware Kit
74023	1	Winch Mounting Plate
74016	1	LH Front Frame Bracket
74017	1	RH Front Frame Bracket
74018	1	LH Rear Frame Bracket
74019	1	RH Rear Frame Bracket
74632	1	Inner Frame Cross member
13222	2	Tow Hook

## III. TOOLS REQUIRED

- Standard Socket Set
- Metric Socket Set
- 3/8 Racket
- 3/8 Extension
- Drill Motor and 1/4" Bit
- Plastic cutting device (i.e. utility knife, saw blade)
- Pliers

## IV. TORQUE SPECIFICATIONS

7/16	50lb. ft. (67.8 N-m)
5/8	125 lb. ft. (169.5 N-m)

## V. INSTALLATION

### 1. Prepare the front of the vehicle

Remove the front splash pan skid plate from vehicle. Save the factory plastic fasteners.

Remove the plastic trim panel from the top of the frame in front of the grille.

Unplug the factory fog light wiring if so equipped.

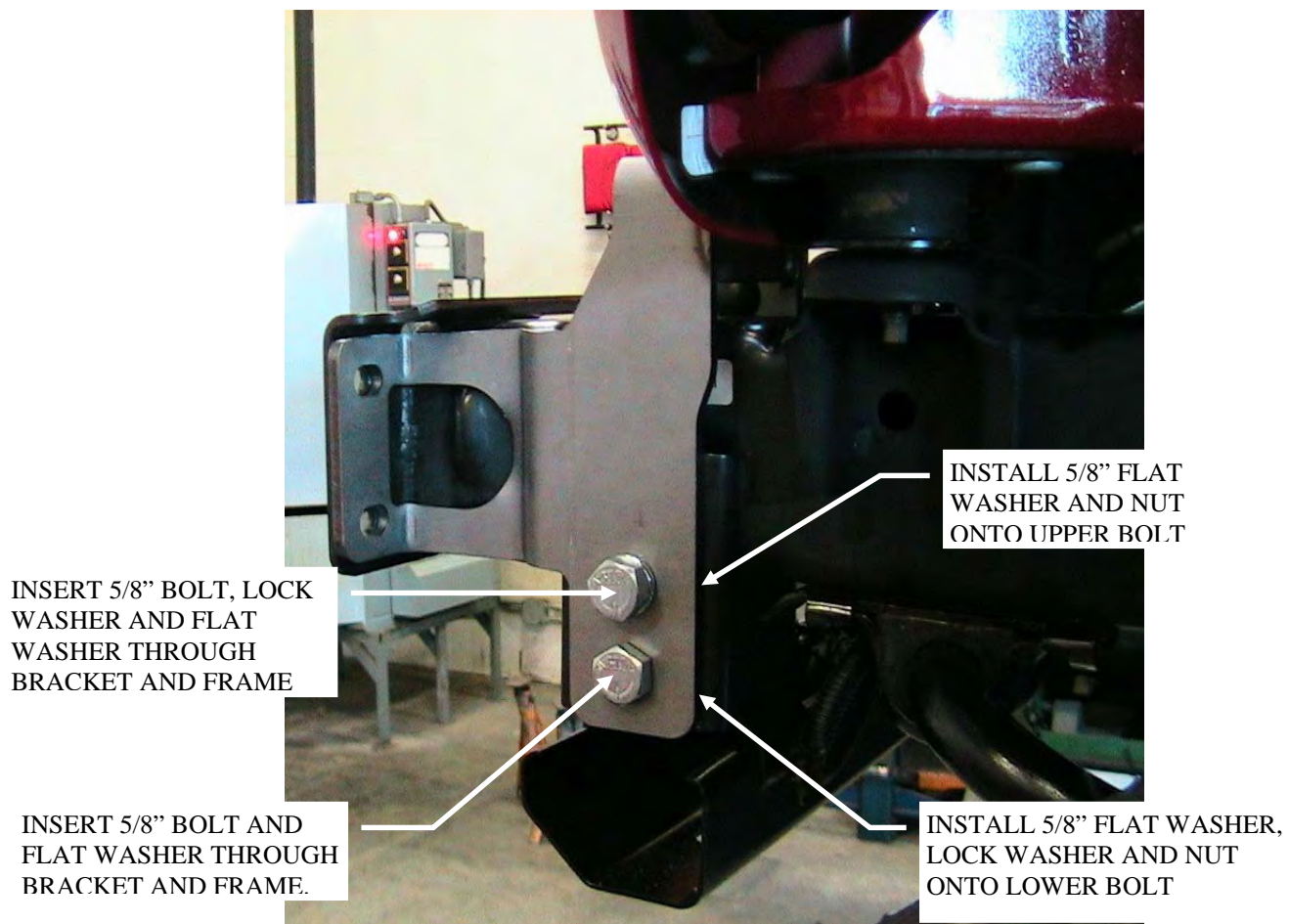
Remove the eight nuts that fasten the bumper to the frame.

Remove the front bumper from the vehicle.

Disconnect the plastic fog light wire loom fasteners from the frame.

### 2. Install frame hardware

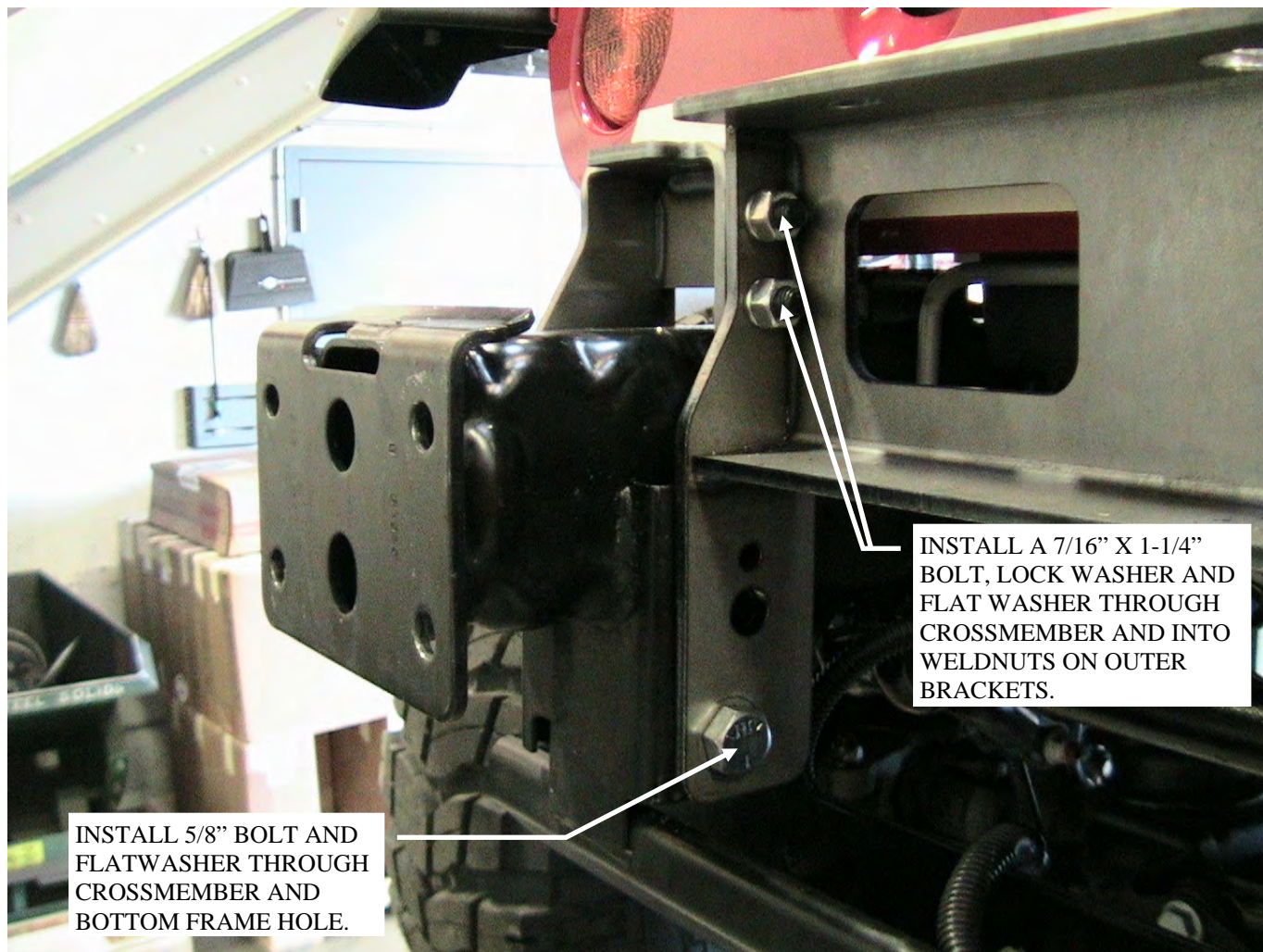
Locate and install the outer frame brackets to each side of the vehicle. Use **Figure 1** to determine each brackets location. Install each bracket on the frame using the 5/8" x 1-1/2" long bolts, flat washers, lock washers and nuts.



**Figure 1: Driver's Side Outer Frame Bracket**

Install a 5/8" bolt and flat washer through the outer frame bracket lower hole. Then install a 5/8" bolt, lock washer and flat washer through the upper hole. It is necessary to install the lock washer to the bolt for the upper bolt holes due to minimal clearance inside the bracket. Reach up inside the frame and install a flat washer and nut to the upper bolt. Install a flat washer, lock washer and nut to the lower bolt. Do not tighten these bolts at this time. Repeat this for both sides of the frame.

Next, install the inner frame cross member using Figure 2 as a guide. Attach the cross member to the inside of the frame using the 5/8" hardware.



**Figure 2: Installation of inner frame cross member**

Install a 5/8" bolt and flat washer through the cross member and the lower frame hole. Reach up inside the frame and install a flat washer, lock washer and nut to the bolt. Install a 7/16" x 1-1/4" long bolt, lock washer and flat washer through the cross member and into the weldnuts on the outer bracket.

Once all of the hardware is installed, tighten the 7/16" hardware to the previously stated torque spec. Do not tighten the 5/8" hardware at this time.

### 3. Prepare and Install bumper

It is necessary to trim the factory plastic bumper to allow for the main frame brackets to fit into the bumper.

Remove the steel portion of the bumper by removing the 8 bolts that fasten the steel bumper to the plastic. Save these bolts.

If your vehicle does not have tow hook cutouts in the top of the bumper it is necessary to cut access holes in the top of the bumper. Place the plastic portion of the bumper on a flat working surface. Using a 1/4" drill bit and drill motor, drill the corners of the formed area as shown in **Figure 3**.

#### **WARNING**



Drilling operations can cause flying chips. **WEAR SAFETY GOGGLES.**  
Flying chips can cause eye injury.



**Figure 3: Drill corners of tow hook cutout**

Upon drilling the corners of the tow hook area, use a utility knife, skill saw or other cutting device to cut the plastic between the drilled holes as shown in **Figure 4**.



**Figure 4: Tow hook cutout**

Depending on which model vehicle you are working on, it may be necessary to now trim out the inside of the bumper to allow for adequate main frame bracket fit.

If your vehicle is equipped with factory tow hooks, insert the main frame brackets into the inside of the bumper and check for any interference. You may need to widen the factory cutout as shown in **Figure 4**. Once the tow hook easily slides through the top cutout in the bumper as in **Figure 5**, test fit the steel portion of the bumper.

With the steel portion of the bumper installed into the back of the plastic bumper, the main frame brackets must be able to mount flush to the factory bumper as shown in **Figure 6**. Trim out the inside of the plastic bumper as necessary.

If your vehicle is not equipped with factory tow hooks, it will be necessary to cutout the inside of the plastic bumper as shown in **Figure 7**. Be sure not to cut through the front face of the bumper. This step is easily completed using a cutting wheel.

**Note: The main frame brackets are left and right side specific. See Figures 7 and 9 for clarity.**



**Figure 5: Tow hook fitment into plastic bumper**

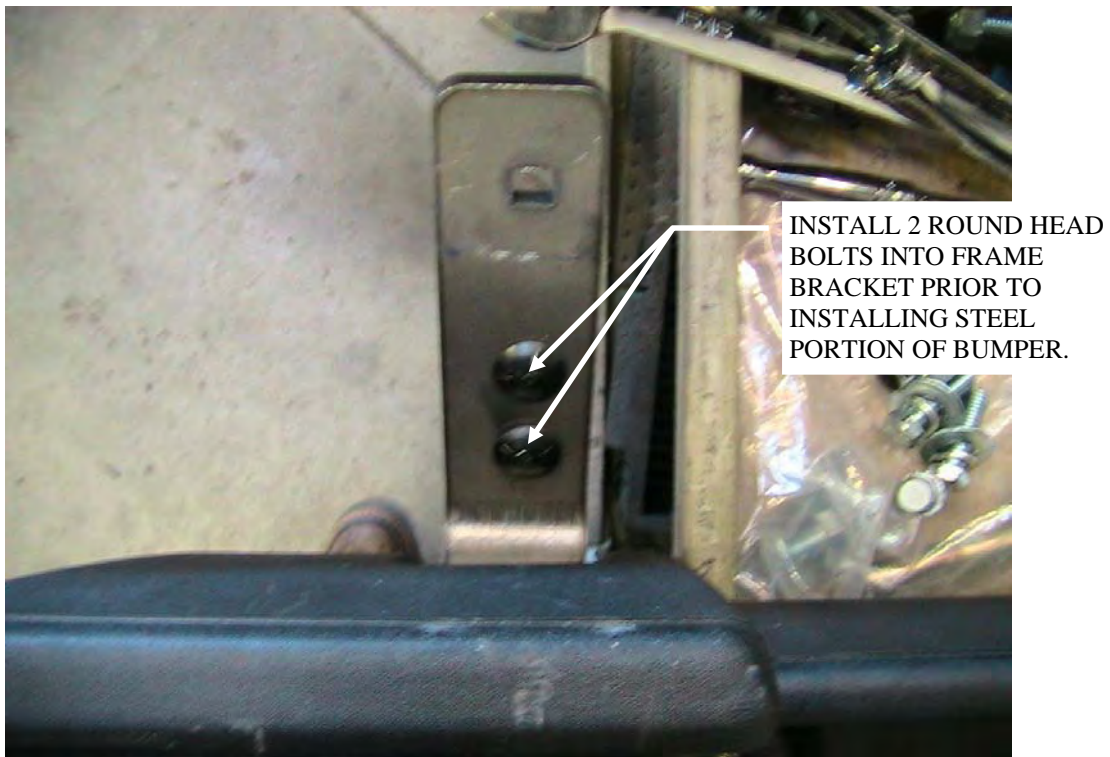


**Figure 6: Tow hook must fit flush to steel bumper**



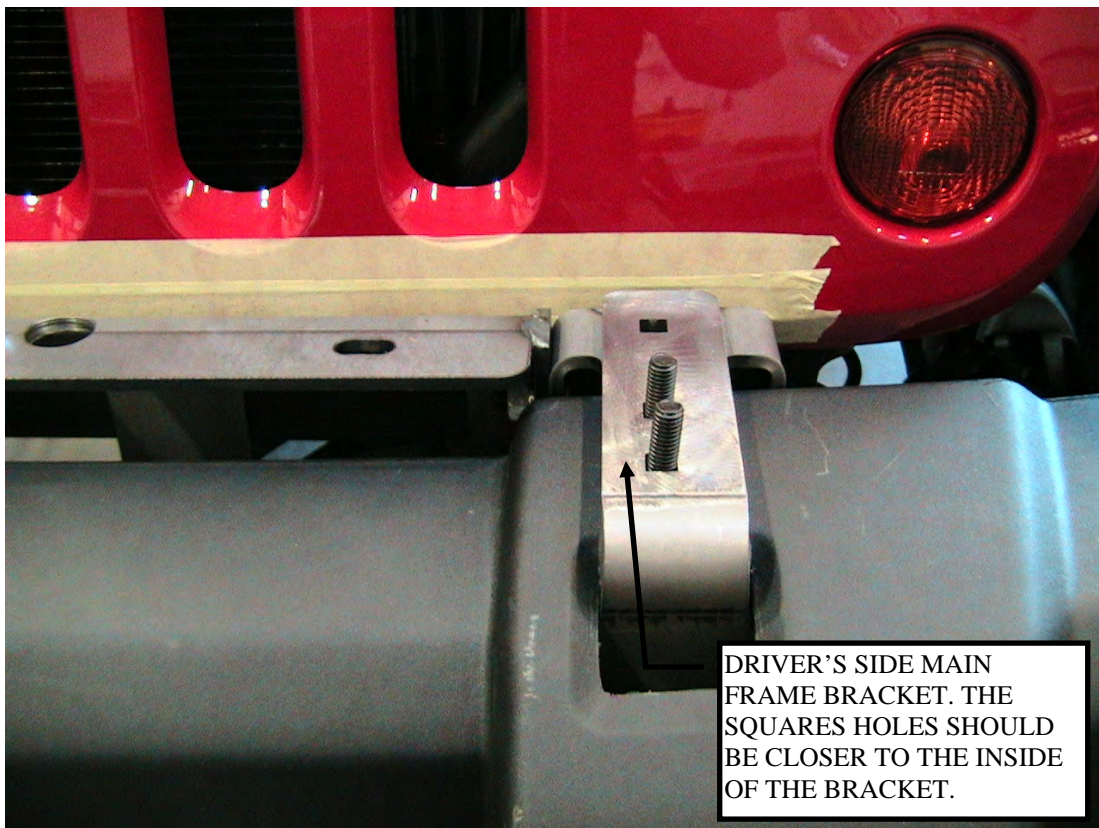
**Figure 7: Cutout of inside of plastic bumper**

Once the plastic bumper is trimmed to fit the main frame brackets, insert the black 7/16" x 2-1/2" long round head bolts into the front two holes of each main frame bracket and insert it into the plastic bumper as shown in **Figure 8**. Then install the steel portion of the factory bumper to plastic portion using the 8 bolts removed earlier. Torque the factory bolts to 45 ft/lbs.



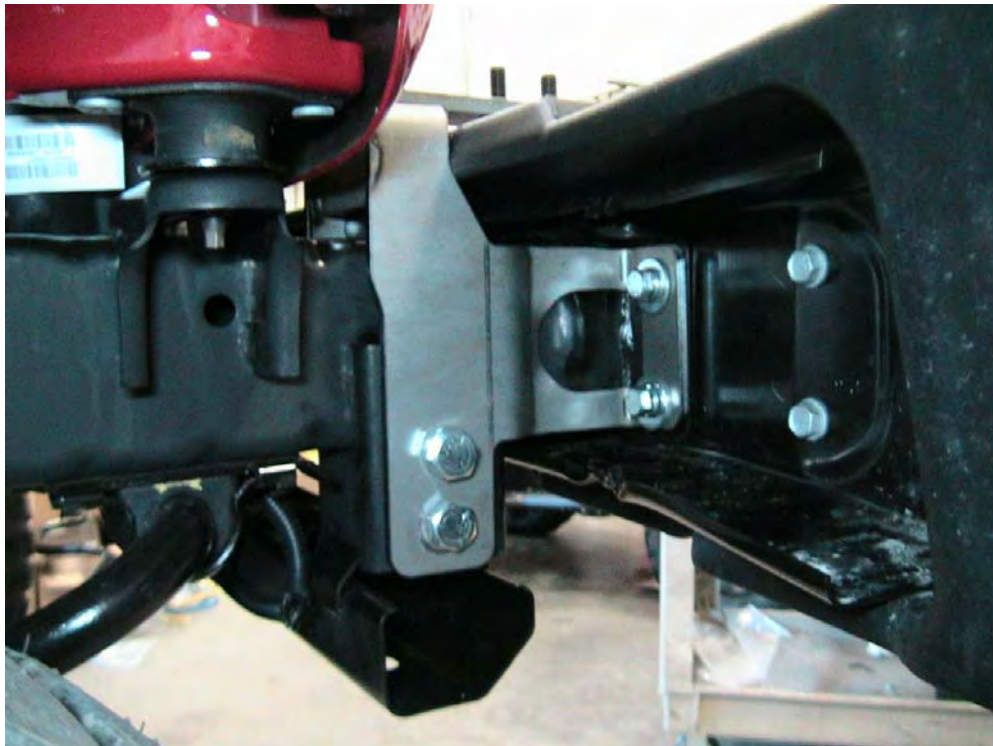
**Figure 8: Install 7/16" Round Head bolts into frame bracket prior to installing steel bumper**





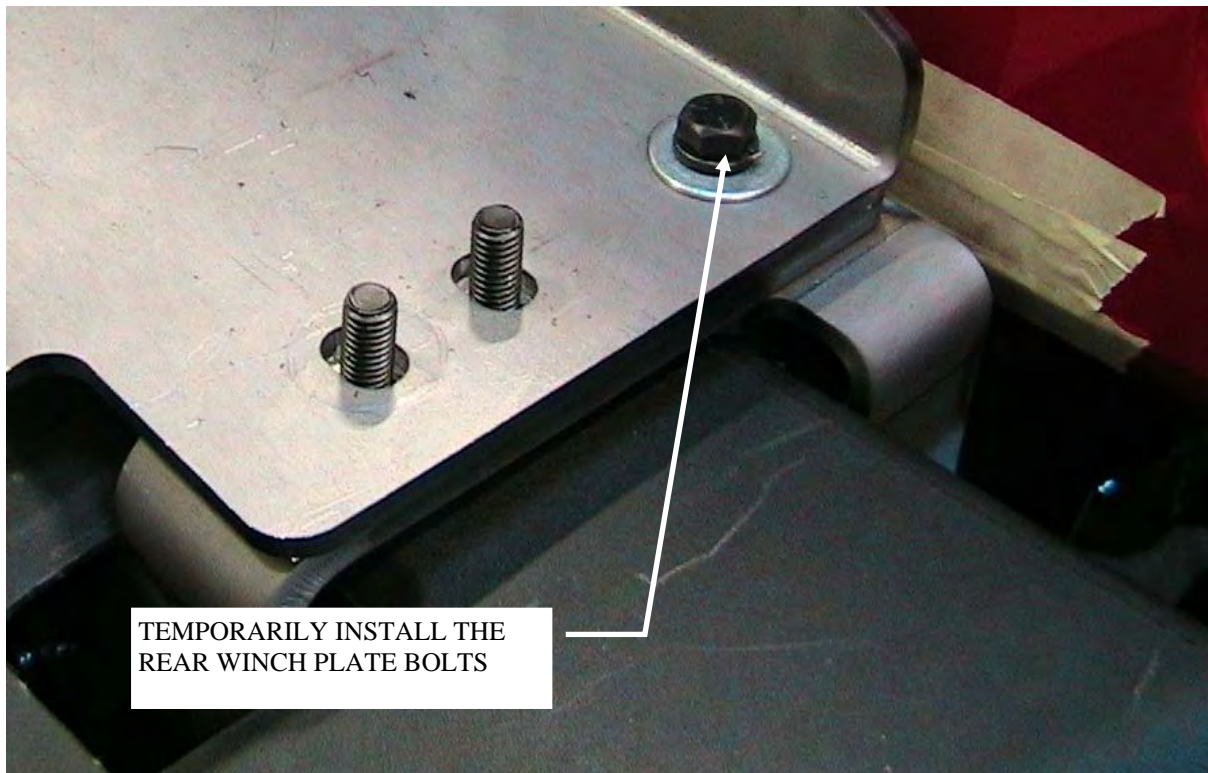
**Figure 9: Driver's side main frame bracket**

Now install the front bumper assembly to the frame using the 7/16" x 1-3/4" long bolts. Holding the frame bracket, align it to the factory hole locations and install a 7/16" bolt, lock washer and flat washer into each of the 8 bolt hole locations. See **Figure 10**.



**Figure 10: Bumper installed to frame**

Temporarily install the rear 7/16" winch plate bolts as shown in Figure 11. Once the rear bolts are temporarily in place, begin to tighten the 8 7/16" bolts that mount the bumper to the frame. Then tighten the 6 5/8" bolts that mount the rear brackets and inner cross member to the frame. Torque all bolts to the previously specific value.



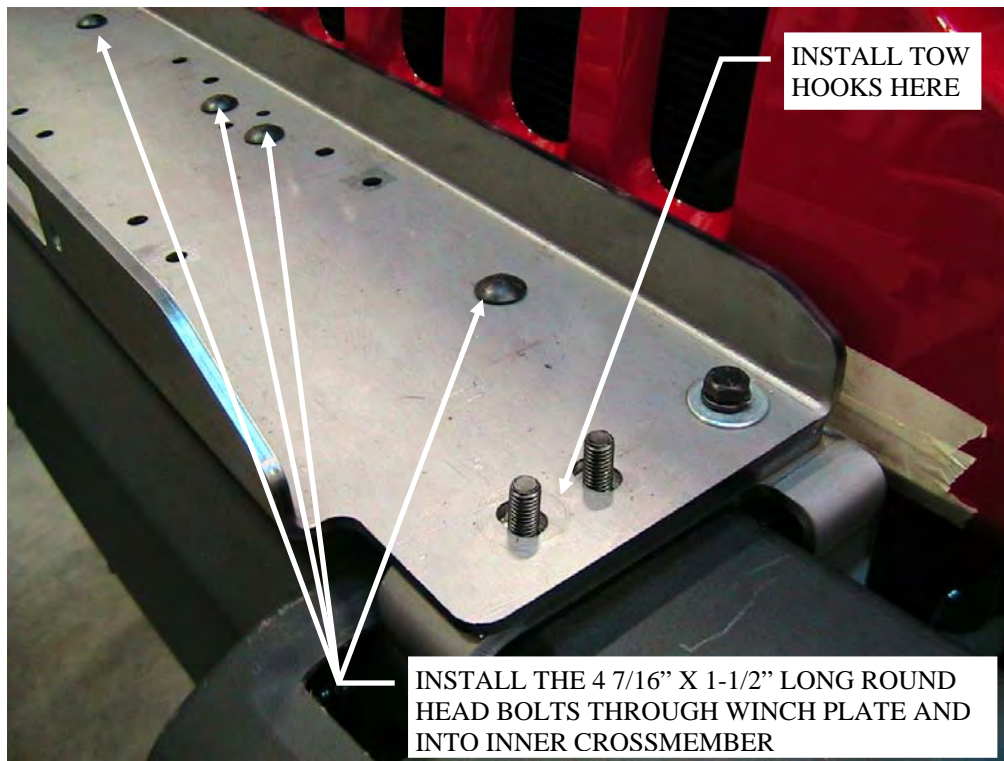
**Figure 10: Rear winch plate bolt**

If you are installing a winch at this time, do so now per the manual and hardware supplied with the winch.

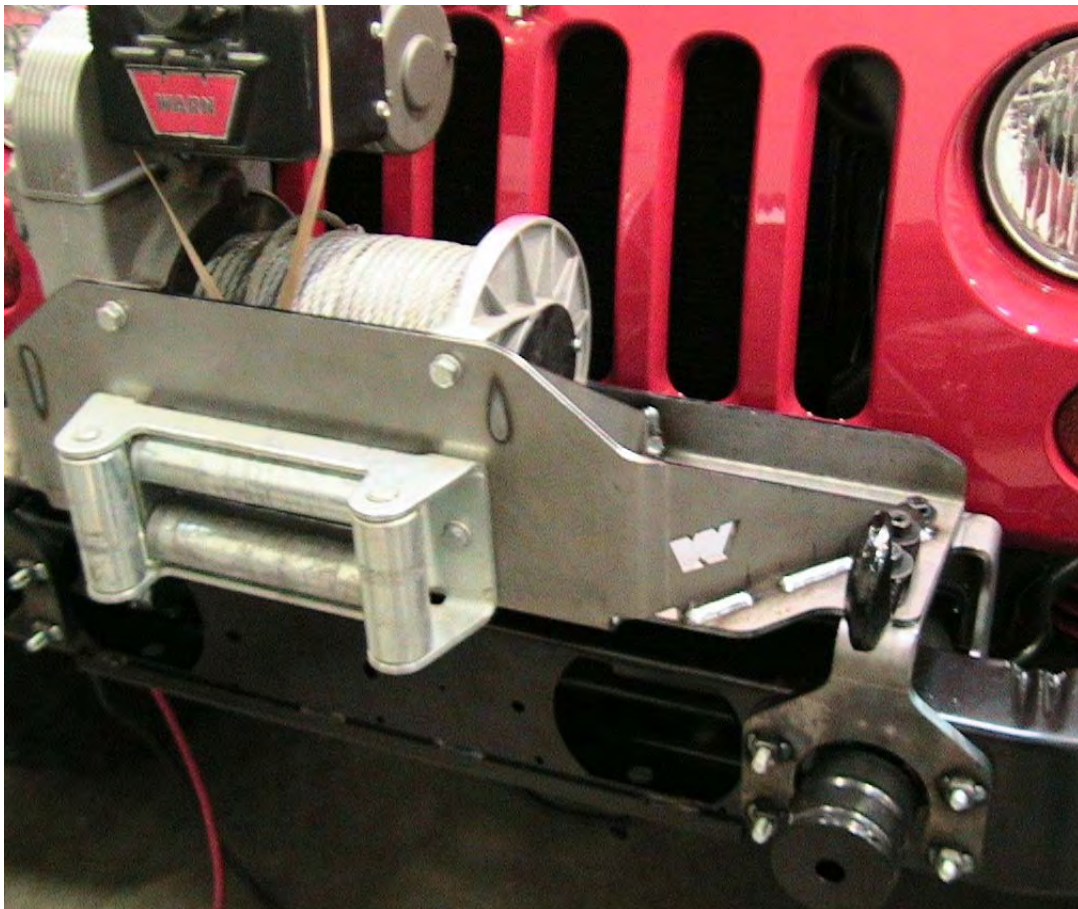
**⚠ WARNING**

**READ THE VEHICLE'S OPERATOR MANUAL, WINCH OPERATOR MANUAL, AND ALL WARNING LABELS PRIOR TO OPERATION OF VEHICLE AND WINCH.**

Once all of the bumper and bracket hardware is properly torqued, install the winch plate to the frame brackets using the 7/16" flat washers, lock washers and nuts for the front 2 bolts on each side. Install the 2 black 7/16" x 1-1/2" bolts with lock washers and flat washers into the rear mounting hole on each side as shown in Figure 10. Install the 4 7/16" x 1-1/2" round head bolts through the winch plate and inner cross member. Reach up from the bottom and install a 7/16" flat washer, lock washer and nut onto the bolts. **See Figure 11 and 12.** Torque the winch plate to the brackets using the previously specified value.



**Figure 11: Center bolts (non 8274 winch plate), Bolt location are the same.**



**Figure12: Plastic bumper omitted for bracket location clarity.**

Re-install the fog light wire loom to the frame locations.

Re-install the front splash pan skid plate using the factory hardware.

Plug the fog light wiring to the lights.

**THE WINCH MOUNTING PLATE INSTALLATION IS NOW COMPLETE. PROCEED TO SECTION IV TITLED “MAINTENANCE/CARE”.**

 **WARNING**

**FAILURE TO SECURELY TIGHTEN ALL BOLTS ON THE WINCH PLATE, WINCH, AND FAIRLEAD CAN RESULT IN PRODUCT FAILURE WHICH MAY RESULT IN VEHICLE DAMAGE AND OPERATOR INJURY OR DEATH. DOUBLE CHECK THAT ALL BOLTS ARE SECURELY TIGHTENED PRIOR TO USE.**

## **VI. MAINTENANCE/CARE**

1. Inspect all parts on the winch, winch mount, and related hardware prior to each use. Replace all hardware that appears rusted or deformed.
2. Inspect all nuts and bolts on the winch, winch mount,, and related hardware prior to each use. Tighten all nuts that appear to be loose. Stripped, fractured, or bent bolts or nuts need to be replaced.
3. Check all cables prior to use. Replace cables that look worn or frayed.
4. Check all moving or rotating parts. Remove debris that may inhibit the part from moving freely.

## **VII. TROUBLE SHOOTING**

 **WARNING**

**PERFORM REGULAR INSPECTIONS ON THE WINCH, WINCH MOUNT, AND RELATED HARDWARE. NEVER OPERATE THE WINCH WITH DAMAGED OR MISSING PARTS. FAILURE TO FOLLOW THIS WARNING MAY CAUSE VEHICLE DAMAGE AND OPERATOR INJURY OR DEATH.**