



INSTALLATION INSTRUCTIONS

Trans4mer Grille Guard/Winch Mount For 2008 Ford Super Duty Kit 75810 (Black) and 75815 (Stainless)

Your safety, and the safety of others, is very important. To help you make informed decisions about safety, we have provided installation and operating instructions and other information on labels and in this guide. This information alerts you to potential hazards that could hurt you or others. It is not possible to warn you about all potential hazards associated with this product, you must use your own good judgment.

**CARELESS INSTALLATION AND OPERATION CAN RESULT IN SERIOUS INJURY OR EQUIPMENT DAMAGE.
READ AND UNDERSTAND ALL SAFETY PRECAUTIONS AND OPERATING INSTRUCTIONS BEFORE
INSTALLING AND OPERATING THIS PRODUCT.**

This guide identifies potential hazards and has important safety messages that help you and others avoid personal injury or death. **WARNING** and **CAUTION** are signal words that identify the level of hazard. These signal words mean:

WARNING signals a hazard that could cause serious injury or death, if you do not follow recommendations.

CAUTION signals a hazard that may cause minor to moderate injury, if you do not follow recommendations.

This guide uses **NOTICE** to call attention to important mechanical information, and **Note**: to emphasize general information worthy of special attention.

WARNING

INJURY HAZARD

Failure to observe these instructions could lead to severe injury or death.

- Always** use extreme caution when drilling on any vehicle. Make sure that all fuel lines, brake lines, electrical wires, and other objects are not punctured or damaged when/if drilling on the vehicle. Thoroughly inspect the area to be drilled (on both sides of material) prior to drilling, and relocate any objects that may be damaged. Failure to inspect the area to be drilled may result in vehicle damage, electrical shock, fire or personal injury.
- Always** wear safety glasses when installing this kit. A drilling operation will cause flying material chips. Flying chips can cause eye injury.
- Always** use extreme caution when cutting and trimming during fitting.
- Always** remove jewelry and wear eye protection.
- Never** lean over battery while making connections.
- Always** insure components will remain secure during installation and operation.
- Always** tighten all nuts and bolts securely, per the installation instructions.
- Always** replace all worn or damaged parts before operating.
- Never** operate this WARN product with damaged or missing parts.

Caution

Moving Parts Entanglement Hazard

Failure to observe these instructions could lead to minor or moderate injury.

- Always** take time to fully read and understand the installation Instructions included with this product.

Read installation instructions thoroughly.

Notice

Equipment Damage

- Always** refer to the Operator's Manual, supplied in the winch kit, for all wiring schematics and specific details on how to wire a WARN winch product to your vehicle.

Read Operating Manual thoroughly.

This WARN Trans4mer system can be customized to give your vehicle a wide variety of looks, front-end protection and winch mounting capability. The system starts with this strong two-tube grille guard that attaches to the truck's frame with brackets designed to handle up to a 16500 lb winch. It is durable and good looking as a stand-alone grille guard, but can be easily upgraded with some great options! You can add a third large size tube (light bar) that adds even more protection and includes tabs for mounting auxiliary lights. The tubes can be mounted in a variety of positions to achieve the look and function that you desire. You can mount a winch carrier bracket that provides a permanent mount for a Warn winch. You may also add a receiver bracket that will handle the Warn multi-mount winch system. Finally, brush guards that protect the headlights and front corners of the vehicle can be easily added to any of the options above.

Before You Begin

- Read and understand these Installation Instructions.
- Refer to Figure A to become familiar with the components and hardware in this kit.

PARTS LIST

<u>PART NO.</u>	<u>QUANTITY</u>	<u>DESCRIPTION</u>
75809/75814	2	Side Member, Black/Stainless
29366/60326	2	2.5" Grille Guard Tube, Black/Stainless
29147	4	Washer, Plastic (Black Kit only)
75738	1	Frame Extension, RH
75737	1	Frame Extension, LH
13222	2	Tow Hook, Black
13230	2	Tow Hook, Stainless

TORQUE SPECIFICATIONS

BOLT SIZE	TORQUE
3/8 inch	30 lb. ft (40.7 N-m)
7/16 inch	50 lb. ft. (67.8 N-m)
1/2 & 5/8 inch	75 lb. ft. (101.7 N-m)

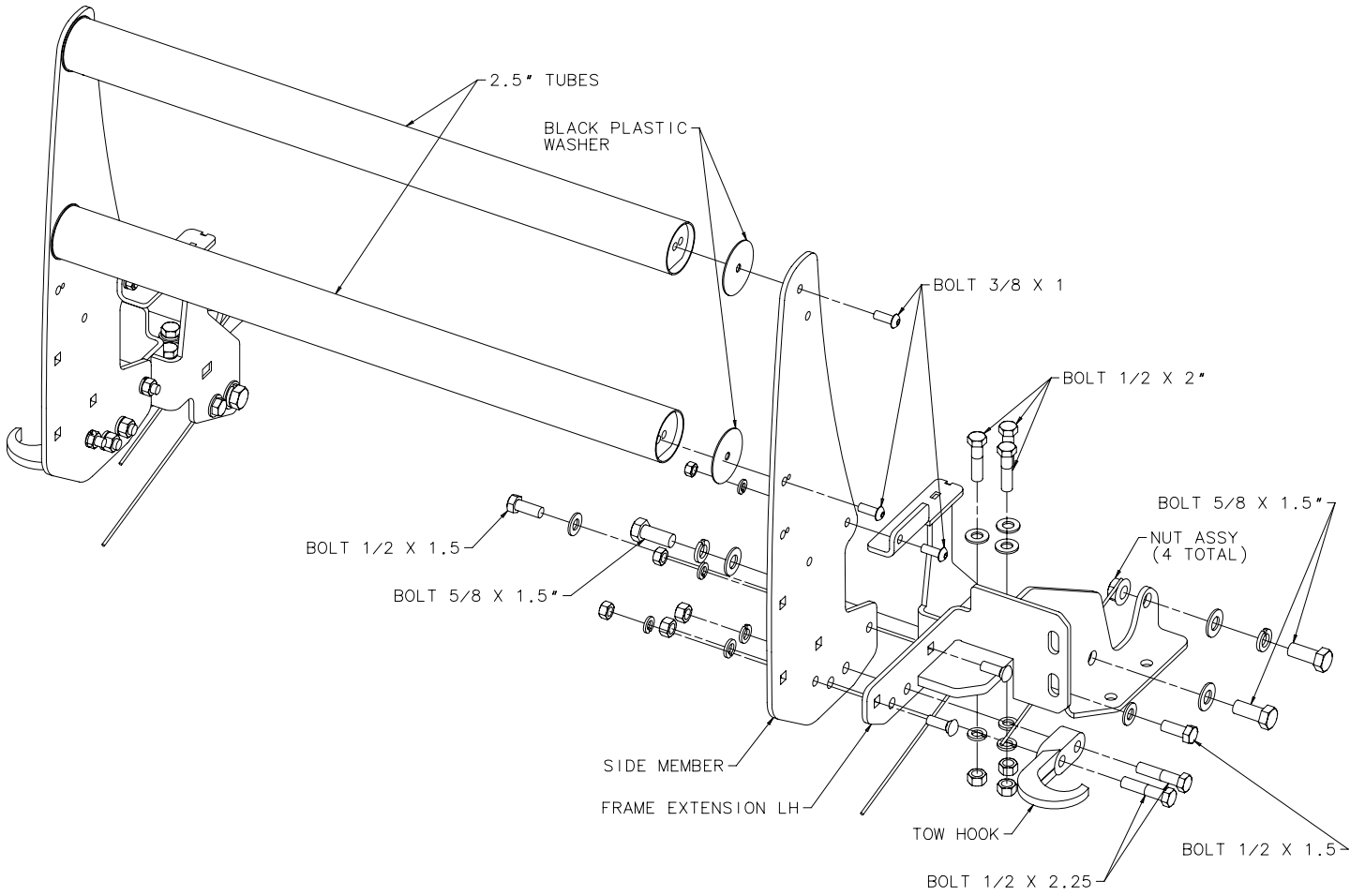


Figure A. Exploded View

NOTE: Follow the instructions step by step for fastest installation. Do not securely tighten fasteners until directed to do so.

(A) Remove the bolt securing the hood latch release lever.



Figure B

(B) Remove the rear bumper bolts (1 per side)

(C) Remove plastic fasteners securing rubber air deflector.

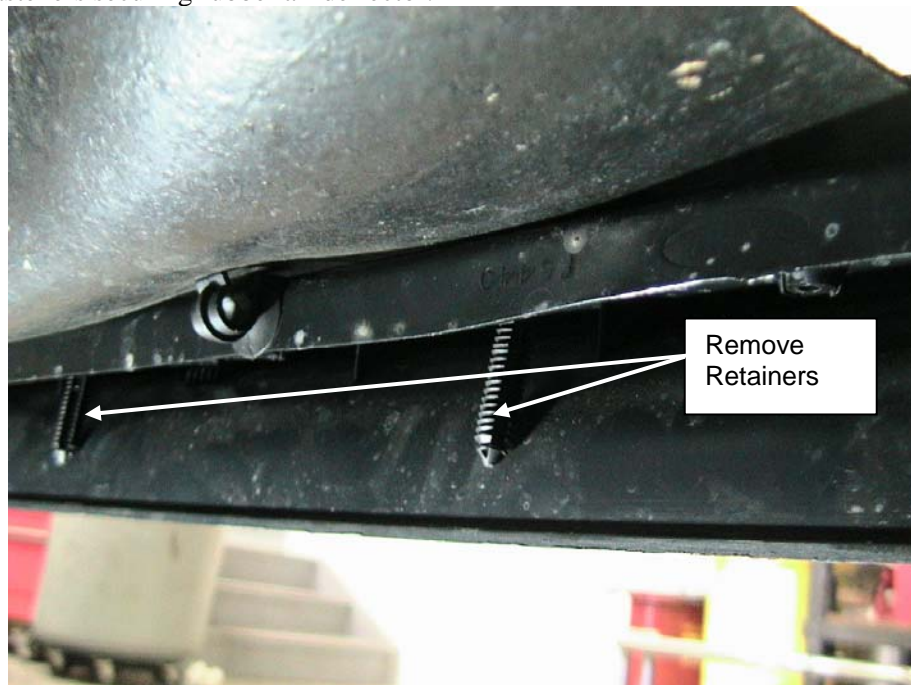


Figure C.

(D) Remove 4 bumper bolts from the front of the bumper as shown.

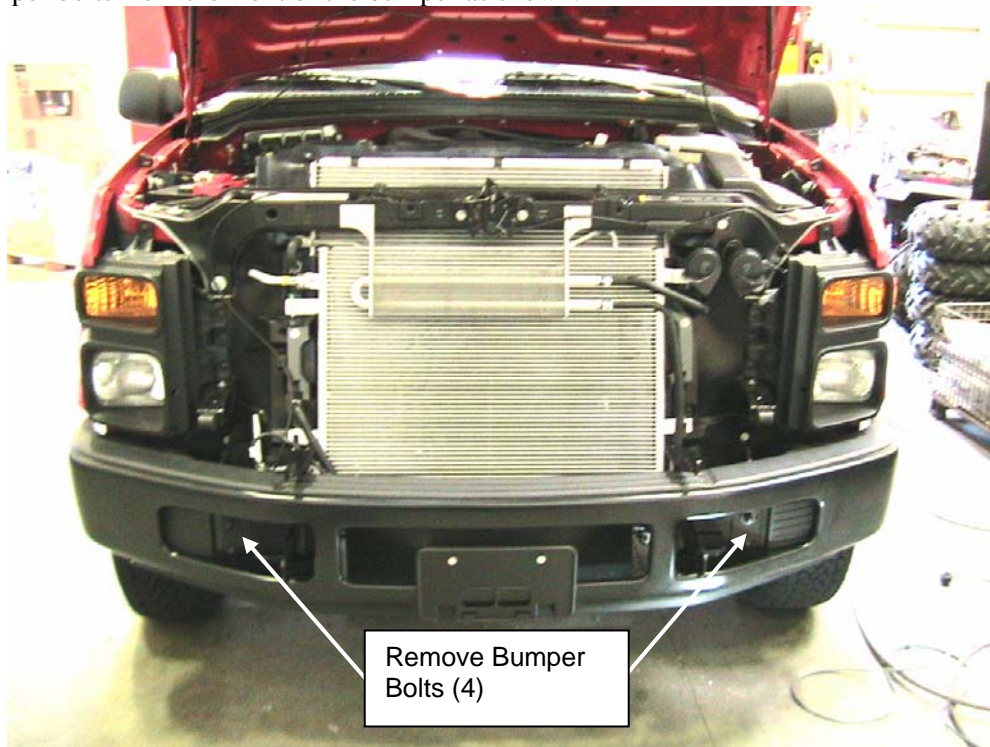


Figure D.

(E) Remove the bumper and set it aside.

(F) Remove three bolts from each tow loop and discard the tow loops and tow loop bolts.



Figure D.

1. Install the frame bracket on the passenger side frame by setting the bracket on the frame and tilting it back to allow the rear part of the bracket to slide past the body mount bracket. It may be necessary to lightly tap the frame bracket into place. Be very careful not to damage any vehicle parts while installing the brackets. Intercoolers and hoses are close to the brackets so care should be taken not to damage, kink, or cut the hoses during installation. Once the frame bracket is in place and holes are lined up with the holes in the frame, repeat for driver side frame. (See figure 1.)

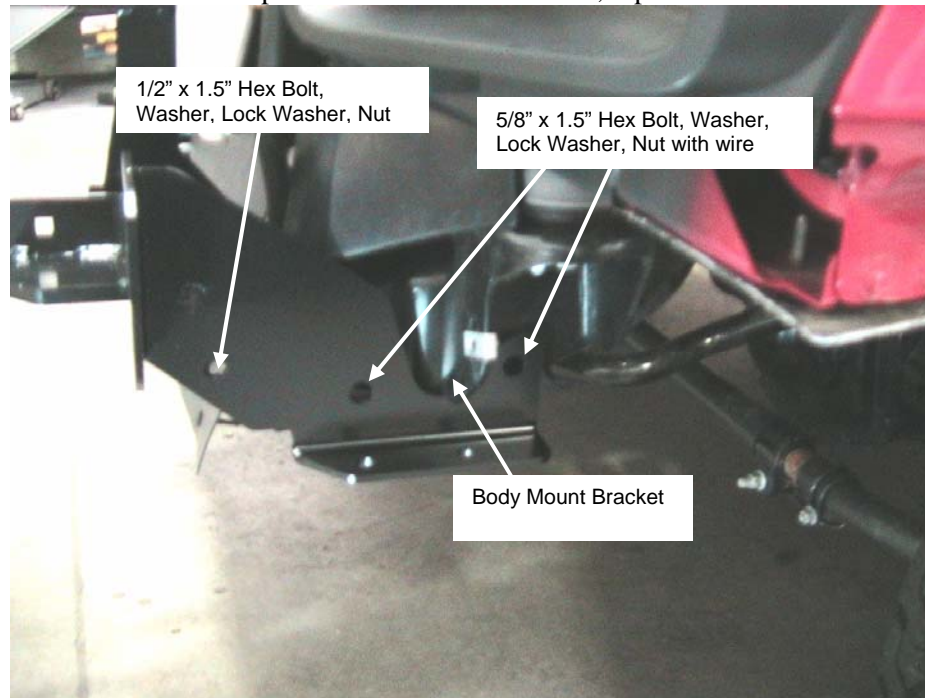


Figure 1 Placement of the Frame Bracket (Driver Side)

2. Install fasteners as shown in Figure A and Figure 1. Do not tighten any fasteners until instructed to do so.

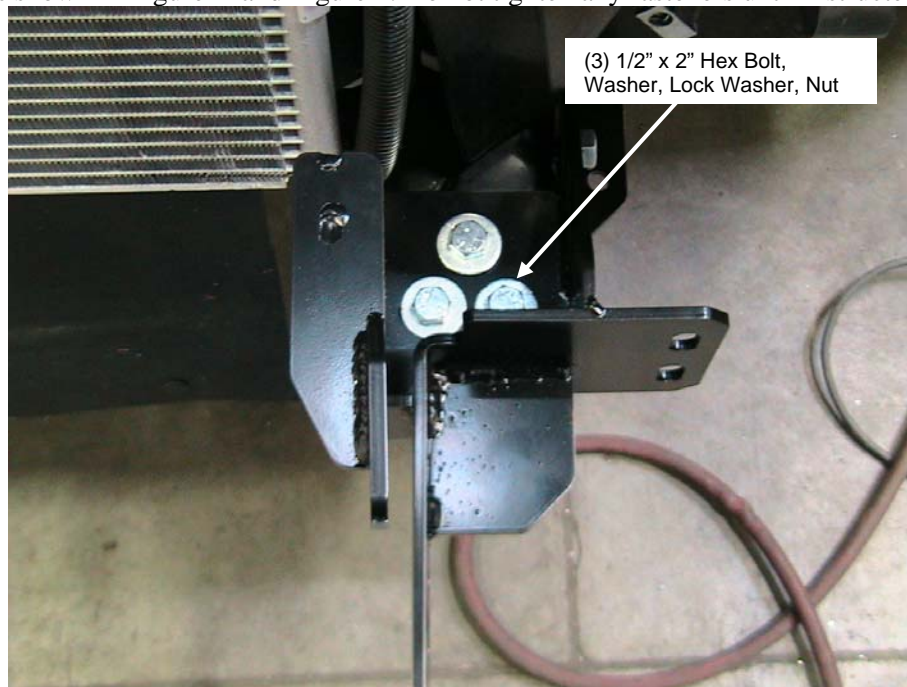


Figure 2. Top Frame Bolt Installation. (Driver Side)

3. Install fasteners as shown in Figure A and Figure 2. Do not tighten any fasteners until instructed to do so.

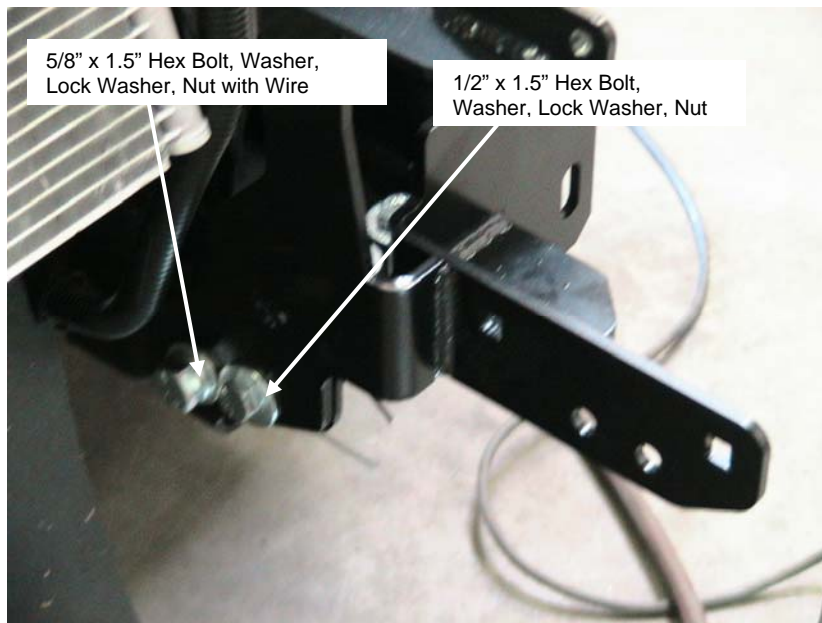


Figure 3. Inboard Bolt Installation. (Driver Side)

4. Install fasteners as shown in Figure A and Figure 3. Do not tighten any fasteners until instructed to do so.
5. Use diagonal cutters or hack saw to cut off excess wire from nut with wire assemblies. Wire should be cut nearly flush with the front of the frame.
6. Repeat steps 2 through 5 for passenger side.



Figure 4. Bumper Reinstalled.

7. Reinstall the Bumper. Four front bolts and two rear bolts. Do not tighten any fasteners until instructed to do so.

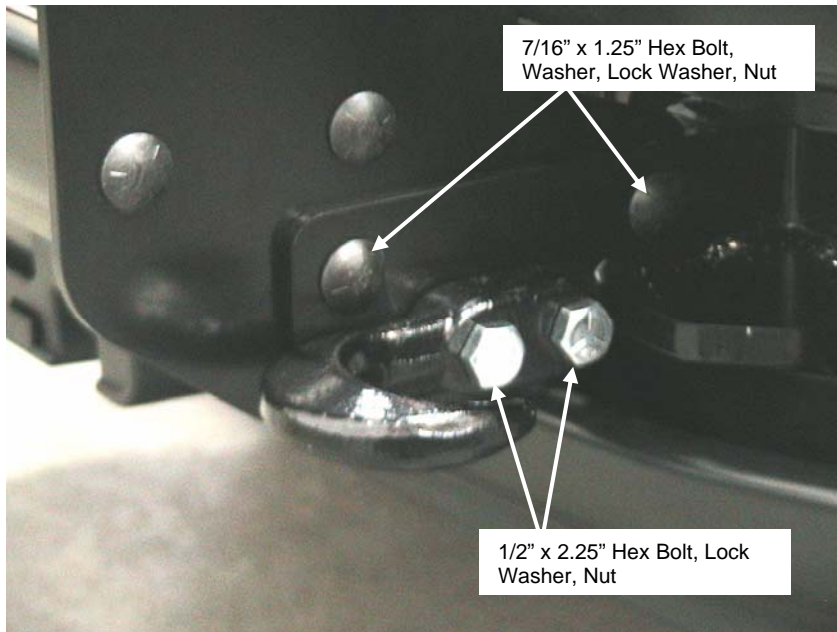


Figure 5. Side member installation (Driver Side)

8. Install fasteners as shown in Figure A and Figure 5. Do not tighten any fasteners until instructed to do so.
Note: Stainless kits use Stainless button head screws in place of carriage bolts. Stainless kits use locknuts in place of washers, lock washers, and nuts.

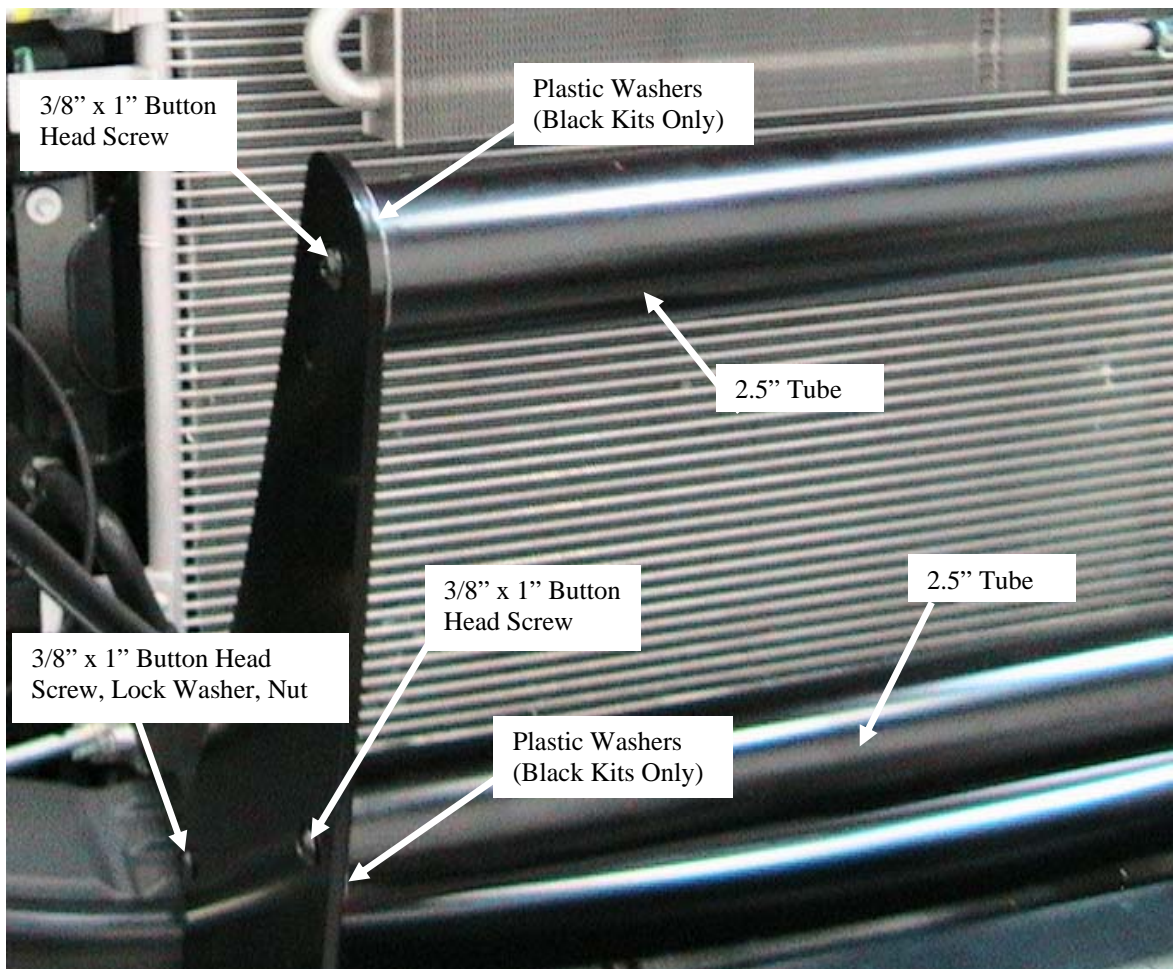


Figure 6 Side Member and Brush Guard Tube installation.

9. Install fasteners as shown in Figure A and Figure 6. Do not tighten any fasteners until instructed to do so.

Note: Stainless kits use Stainless button head screws in place of carriage bolts. Stainless kits use locknuts in place of washers, lock washers, and nuts. Black plastic washers are only used on black kits.

10. If a winch plate is being installed, install it now according to the instructions provided in the mounting plate kit.
11. Tighten all side member fasteners at this time. Start with top button head screws and work down and back. Bolts and screws must be tightened to torque values on Page 2.
12. Once side member fasteners are tightened, tighten top three bolts in bracket then tighten all fasteners on the side of the frame extension bracket. Tighten all fasteners to torque values on Page 2.
13. Tighten bumper fasteners to factory torque specs. (Align bumper to vehicle before tightening.)
14. Install the hood latch release lever and tighten to factory torque values.
15. Install rubber air deflector by pushing black plastic retainers back through holes in bumper.



Figure 7. Finished kit (Multi-Mount winch shown.)

⚠ WARNING

READ THE VEHICLE'S OPERATOR MANUAL, WINCH OPERATOR MANUAL, AND ALL WARNING LABELS PRIOR TO OPERATION OF WINCH.

⚠ WARNING

FAILURE TO SECURELY TIGHTEN ALL BOLTS ON THE WINCH PLATE, WINCH, AND FAIRLEAD CAN RESULT IN PRODUCT FAILURE WHICH MAY RESULT IN VEHICLE DAMAGE AND OPERATOR INJURY OR DEATH. DOUBLE CHECK THAT ALL BOLTS ARE SECURELY TIGHTENED PRIOR TO USE.

Warn Industries Stainless Steel Truck Accessories

What to expect:

Polished stainless steel combines the beauty of a chrome-like appearance with extreme durability and corrosion resistance. With a minimum amount of care, the appearance will last almost indefinitely. Unlike plating or coatings, there is nothing to peel off or wear away that would allow corrosion underneath.

The actual appearance may not be exactly like new chrome in either the degree of luster or color. There may be fine polishing lines visible up close and small differences between mating parts of an assembly. A grille guard, for instance, may have small differences between the round tubing and the flat plate. The backside of a part may not be as highly polished as the front. However, part of the beauty and appeal of stainless actually lies in the smooth “hand-worked” appearance.

There also is a possibility that small rust spots can appear on stainless products. They are usually due to minor iron contamination on the surface as a result of normal manufacturing and handling processes. This minor rust, if it occurs at all, is easy to remove and will not tend to spread.

Recommended care:

Regular washing with fresh water and mild car wash detergents followed by rinsing and drying with a soft towel is the best minimum care. Beyond that, any cleaner/wax recommended for automotive finishes will work well to remove minor stains and scuffs, enhance the shine and provide protection. Always use clean soft cotton cloths. In most cases, this will be all that is required for many years. For more serious blemishes or a rust spot, use a cream metal polish recommended for stainless, aluminum, etc. Try to rub in the direction of the original polishing lines.

Ultimately, any stainless part can be restored to a brilliant shine with power buffing processes.

Caution:

Do not use steel wool or any type of metal scraper. Do not use “Scotch Brite” pads or abrasive powdered cleaners. Do not try to clean with muriatic acid or any other acid.

Stainless Fasteners

Stainless steel fasteners are included in many of the stainless kits. These fasteners provide similar corrosion resistance and appearance as the rest of the kit. However, stainless fasteners are prone to galling when installed in similar stainless material. It is a good idea to apply a small amount of anti-seize compound to the threads when installing them. Care should also be taken when tightening the fasteners to prevent rounding or deforming the corners of the bolts. Make sure the wrenches are the correct size and fit properly. In the case of socket heads, the wrench should have sharp, un-worn edges. With a few precautions during assembly the products should provide years of service.

WARNING

PERFORM REGULAR INSPECTIONS ON THE WINCH, WINCH MOUNT, AND RELATED HARDWARE. NEVER OPERATE THE WINCH OR WINCH MOUNT WITH DAMAGED OR MISSING PARTS. FAILURE TO FOLLOW THIS WARNING MAY CAUSE VEHICLE DAMAGE AND OPERATOR INJURY OR DEATH.