



INSTALLATION INSTRUCTIONS

BUMPER

Part Number: 83965

Applications: 2008+ Kawasaki Teryx

Your safety, and the safety of others, is very important. To help you make informed decisions about safety, we have provided installation and operating instructions and other information on labels and in this guide. This information alerts you to potential hazards that could hurt you or others. It is not possible to warn you about all potential hazards associated with this product, you must use your own good judgment.

CARELESS INSTALLATION AND OPERATION CAN RESULT IN SERIOUS INJURY OR EQUIPMENT DAMAGE. READ AND UNDERSTAND ALL SAFETY PRECAUTIONS AND OPERATING INSTRUCTIONS BEFORE INSTALLING AND OPERATING THIS PRODUCT.

This guide identifies potential hazards and has important safety messages that help you and others avoid personal injury or death. **WARNING** and **CAUTION** are signal words that identify the level of hazard.

These signal words mean:

WARNING signals a hazard that *could* cause serious injury or death, if you do not follow recommendations. **CAUTION** signals a hazard that *may* cause minor to moderate injury, if you do not follow recommendations.

This guide uses **NOTICE** to call attention to important mechanical information, and **Note**: to emphasize general information worthy of special attention.

WARNING

INJURY HAZARD

Failure to observe these instructions could lead to severe injury or death.

- ❑ **Always** use extreme caution when drilling on any vehicle. Make sure that all fuel lines, brake lines, electrical wires, and other objects are not punctured or damaged when / if drilling on the vehicle. Thoroughly inspect the area to be drilled (on both sides of material) prior to drilling, and relocate any objects that may be damaged. Failure to inspect the area to be drilled may result in vehicle damage, electrical shock, fire or personal injury.
- ❑ **Always** wear safety glasses when installing this kit. A drilling operation will cause flying metal chips. Flying chips can cause eye injury.
- ❑ **Always** use extreme caution when cutting and trimming during fitting.
- ❑ **Always** remove jewelry and wear eye protection.
- ❑ **Never** lean over battery while making connections.
- ❑ **Never route electrical cables:**
 - Across any sharp edges.
 - Through or near moving parts.
 - Near parts that become hot.
- ❑ **Always** insulate and protect all exposed wiring and electrical terminals.
- ❑ **Always** install terminal boots as directed in installation instructions.
- ❑ **Always** use appropriate and adequate care in lifting components into place.
- ❑ **Always** insure components will remain secure during installation and operation.
- ❑ **Always** tighten all nuts and bolts securely, per the installation and operation.
- ❑ **Always** perform regular inspections and maintenance on the bumper and related hardware.
- ❑ **Never** operate this **WARN** product with damaged or missing parts.

⚠ Caution
Moving Parts Entanglement Hazard
Failure to observe these instructions could lead to minor or moderate injury.
<input type="checkbox"/> Always take time to fully read and understand the installation and Operations Guide included with this product. <input type="checkbox"/> Never operate this product if you are under 16 years of age. <input type="checkbox"/> Never operate this product when under the influence of drugs, alcohol or medications.
Read installation and operating instructions thoroughly.

Notice
Equipment Damage
<input type="checkbox"/> Always refer to the Installation and Specification Guide, supplied in the winch kit, for all wiring schematics and specific details on how to wire this WARN product to your vehicle.
Read installation and operating instructions thoroughly.

NOTE: This bumper includes mounting holes for WARN winch and trail lights, which are sold separately.

I. TABLE OF CONTENTS

Tools Required	page 2
Fastener Torque Specifications	page 2
Parts List	page 3
Installation	page 4-6
Maintenance/Care	page 7

II. TOOLS REQUIRED

- 14mm, 17mm and 1/2" socket
- Phillips head screwdriver
- 3/16" Allen head wrench
- 9/16" end wrench
- socket wrench

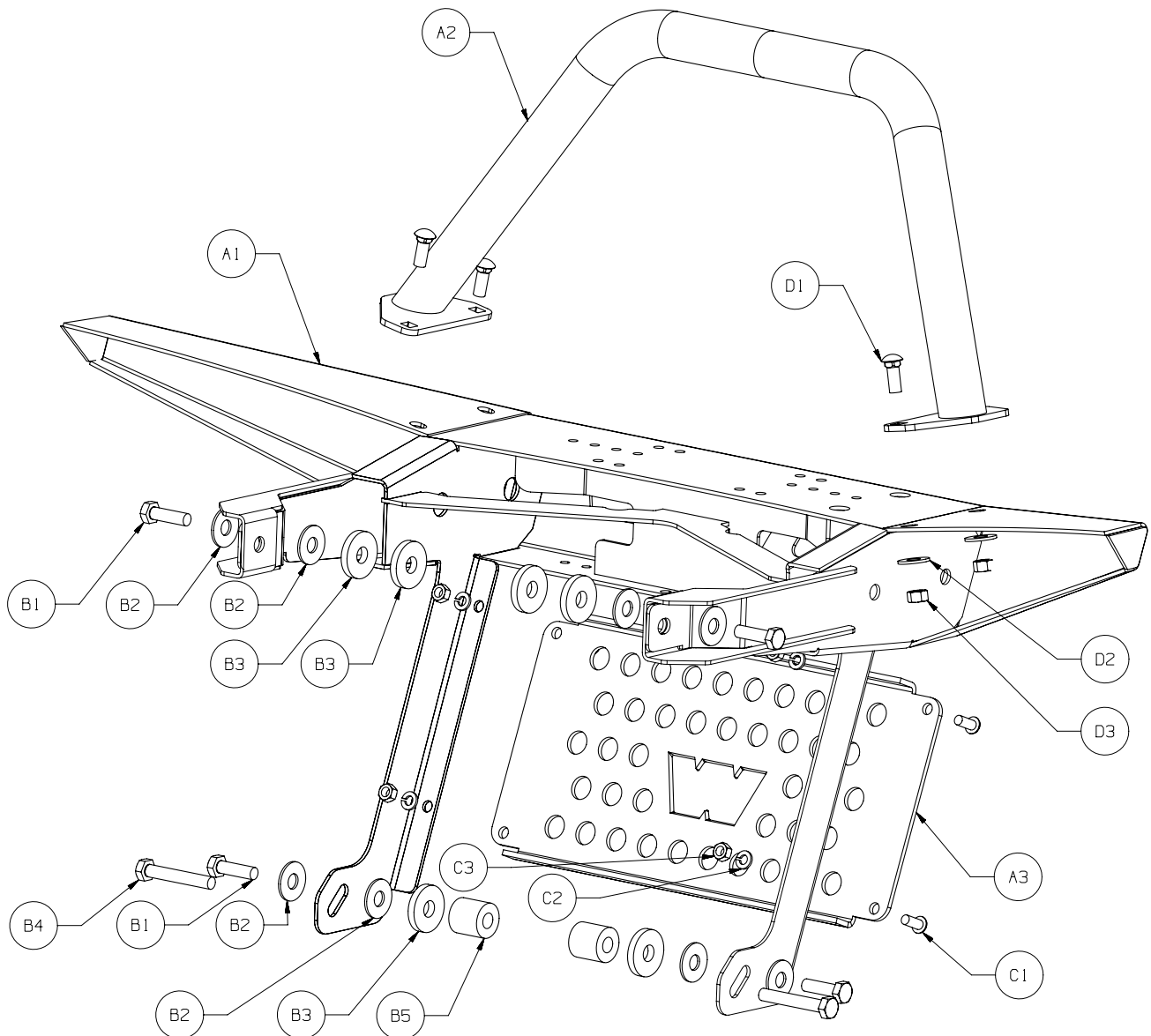
III. FASTENER TORQUE SPECIFICATIONS

1/4 & M6	8 lb. ft. (10.8 N-m)
5/16 & M8	17 lb. ft. (12.5 N-m)
3/8 & M10	30 lb. ft. (40.7 N-m)
7/16	50 lb. ft. (67.8 N-m)
1/2	75 lb. ft. (101.7 N-m)

IV. PARTS LIST

<i>Ref.</i>	<i>Qty</i>	<i>Description</i>	<i>Ref.</i>	<i>Qty</i>	<i>Description</i>
A1	1	Bumper	D1	4	3/8-16x1 Carriage Bolt
A2	1	Bull Bar Tube	D2	4	3/8" Flat Washer
A3	1	Grille Plate	D3	4	3/8-16 Nylon Lock Nut
* B1	4	M10 x 1.25 x 35mm Hex Head Bolt	E1	2	3/8 Black Plastic Conduit (not shown)
B2	10	7/16" Flat Washer	E2	2	1/4 Black Plastic Conduit (not shown)
B3	6	Spacer			
B4	2	M10x1.25x55mm Hex Head Bolts			
B5	2	Long Spacer			
C1	4	5/16-18 x 3/4 Buttonhead Capscrew			
C2	4	5/16" Flat Washer			
C3	4	5/16-18 Nut			

** For 2008 + models only*



V. INSTALLATION

1. Remove front bumper from vehicle, as shown in Figures 1 and 2. A 14mm socket can be used to loosen from frame. Slide bumper down, then forward to avoid contact with radiator.

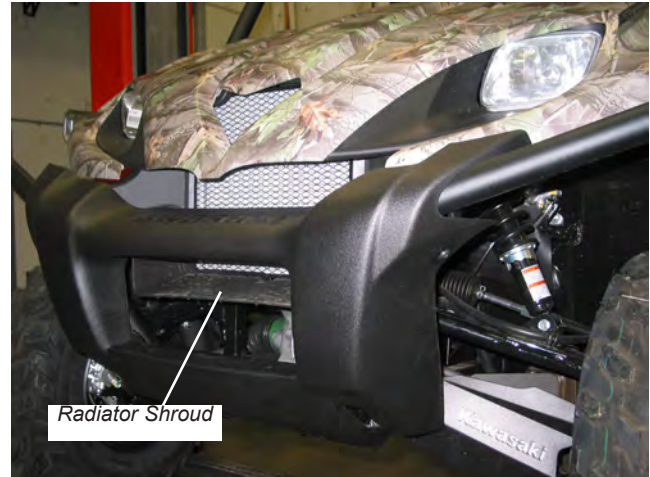


Figure 1 (2009 Shown)

2. For 2009 models, remove radiator shroud, as shown in Figure 1, with a Phillips head screwdriver. Keep wire mesh screen, in front of radiator, in place.

For 2010 models, remove plastic grille, Figure 3.

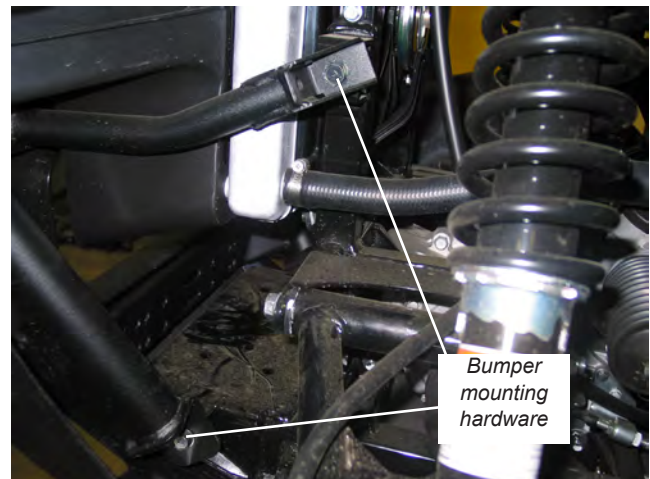


Figure 2

3. Place bumper (A1) into position. For 2008 models, use M10 x 1.25 x 35mm hex head bolt (B1) with washer (B2) on outside of bumper. For 2009+ models, use M10x1.25x55mm hex head bolt (B4) with washer (B2) on outside of bumper. In between the bumper and the frame use one spacer (B3) and one washer (B2), nominally, to space bumper evenly side to side. Additionally, for 2009+ models, use one long spacer (B4) between bumper and frame. Loosely secure with a 17mm socket. See Figure 4 and parts list diagram.



Figure 3

V. INSTALLATION (continued)

- Loosely secure top bumper mount, as shown in Figure 4, with M10 x 1.25 x 35mm hex head bolt (B1) and washer (B2) on outside of bumper. In between the bumper and the frame use two spacers (B3) and two washers (B2), nominally, to space bumper evenly side to side. Torque all four mounting bolts to 30 lb. ft. (40.7 N-m). See parts list diagram.

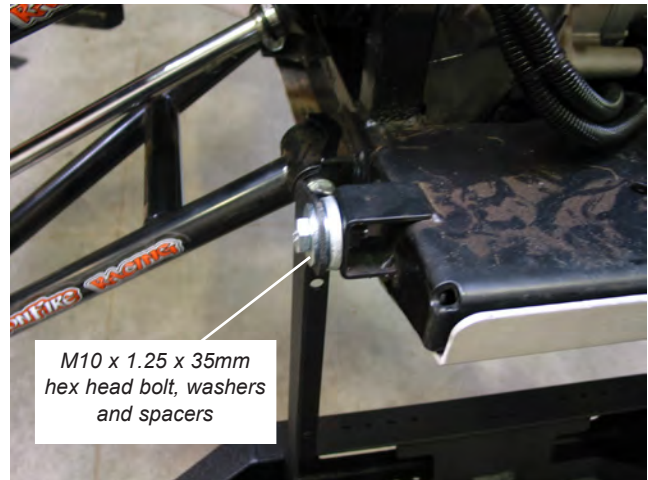


Figure 4

- Position bull bar tube (A2) on top of bumper, as shown in Figure 6. Center and secure with four 3/8-16x1 carriage bolts (D1) on top side and 3/8" flat washers (D2) and nylon lock nuts (D3) on bottom side. Use 9/16" wrench to tighten in place. Torque all four mounting bolts to 30 lb. ft. (40.7 N-m).

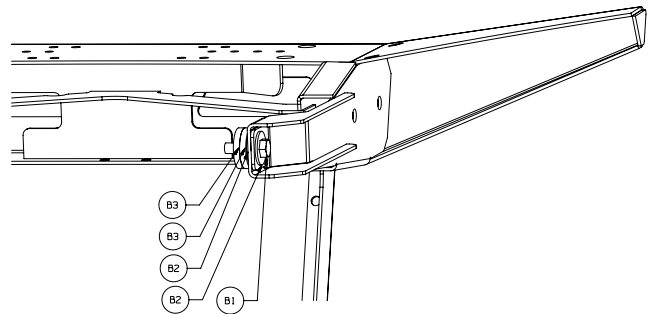


Figure 5

- Attach grille plate to front of bumper, as shown in Figure 6, using 5/16-18x3/4 button head cap-screws (C1) on front side and 5/16" lock washers (C2) and nuts (C3) on back side. Use 3/16" allen head wrench and 1/2" socket to tighten in place. Torque all four mounting bolts to 17 lb. ft. (12.5 N-m).

For 2010 models, replace plastic grille removed in Step 2.

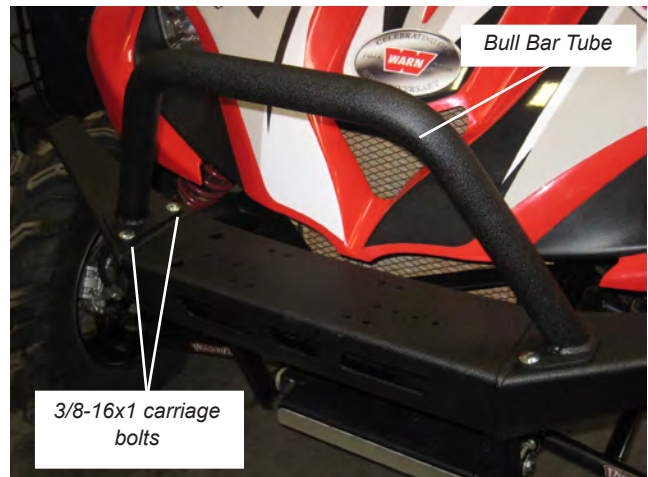


Figure 6

V. INSTALLATION (continued)

7. See Figure 8 for view of completed installation.

⚠ WARNING

Read the vehicle's operator manual, winch operator manual and all warning labels prior to operation of UTV.

The bumper installation is now complete. Proceed to section titled "Optional Winch and Light Installation".

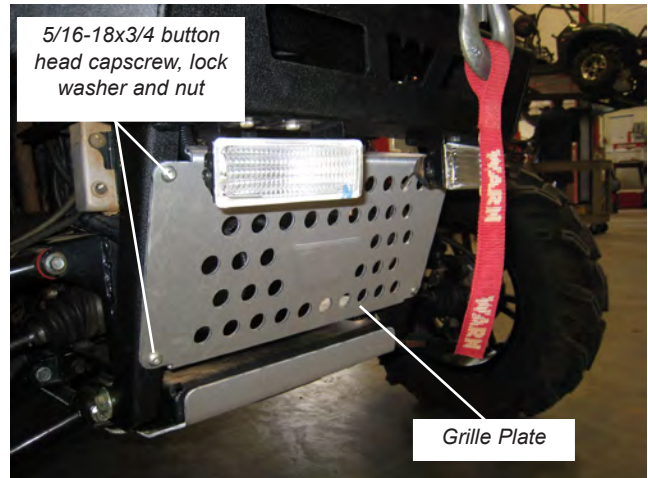


Figure 7

VI. Optional Winch and Light Installation (Refer to these tips if winch and /or lights are added to bumper)

1. WARN winch mounting holes are shown in Figure 9. Pull yellow cable through front hole and blue cable through rear hole after sliding conduit over top both cables. 1/4" ID conduit is to be used for RT/XT25 winches; 3/8" ID conduit is to be used for RT/XT30/40 winches.



Figure 8

2. If no winch is mounted on bumper the set of holes, as shown in Figure 9, can be used to mount a set of lights on top of bumper. If winch is used, there are holes on bottom of bumper, as shown in Figure 10, that can be used to mount a set of lights and u-bolt for plow termination strap (see plow mount installation instructions).

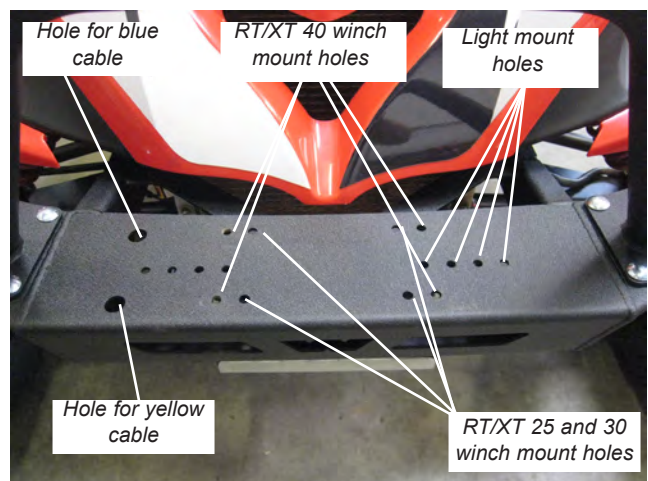


Figure 9

PROCEED TO SECTION TITLED "MAINTENANCE/CARE".

⚠ WARNING

FAILURE TO SECURELY TIGHTEN ALL BOLTS ON THE BUMPER CAN RESULT IN PRODUCT FAILURE WHICH MAY RESULT IN VEHICLE DAMAGE AND OPERATOR INJURY OR DEATH. DOUBLE CHECK THAT ALL BOLTS ARE SECURELY TIGHTENED PRIOR TO USE.

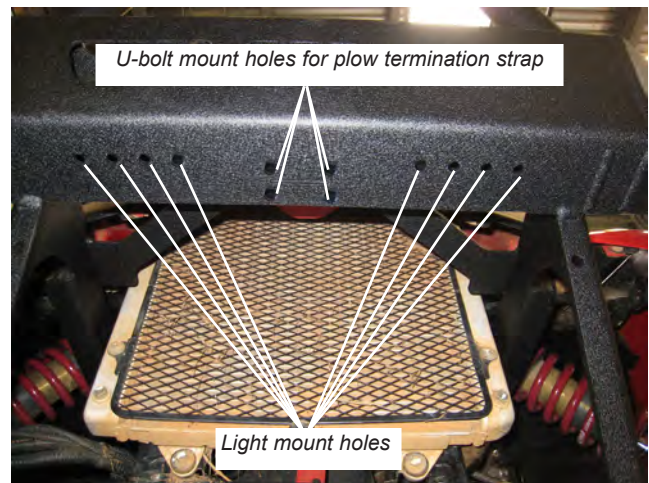


Figure 10

VII. MAINTENANCE/CARE

1. Inspect all parts on the bumper and related hardware prior to each use. Replace all hardware that appears rusted or deformed.
2. Inspect all nuts and bolts on the bumper, and related hardware prior to each use. Tighten all nuts that appear to be loose. Stripped, fractured, or bent bolts or nuts need to be replaced.
3. Check all moving or rotating parts. Remove debris that may inhibit the part from moving freely.

⚠ WARNING

PERFORM REGULAR INSPECTIONS ON THE BUMPER AND RELATED HARDWARE. FAILURE TO FOLLOW THIS WARNING MAY CAUSE VEHICLE DAMAGE AND OPERATOR INJURY OR DEATH.