



INSTALLATION INSTRUCTIONS

UTV LIGHT BAR KIT

Part Number: 83970 and 84360

Application: All UTV's*

* does not include Arctic Cat vehicles

Your safety, and the safety of others, is very important. To help you make informed decisions about safety, we have provided installation and operating instructions and other information on labels and in this guide. This information alerts you to potential hazards that could hurt you or others. It is not possible to warn you about all potential hazards associated with this product, you must use your own good judgment.

CARELESS INSTALLATION AND OPERATION CAN RESULT IN SERIOUS INJURY OR EQUIPMENT DAMAGE. READ AND UNDERSTAND ALL SAFETY PRECAUTIONS AND OPERATING INSTRUCTIONS BEFORE INSTALLING AND OPERATING THIS PRODUCT.

This guide identifies potential hazards and has important safety messages that help you and others avoid personal injury or death. **WARNING** and **CAUTION** are signal words that identify the level of hazard. These signal words mean:

WARNING signals a hazard that *could* cause serious injury or death, if you do not follow recommendations. **CAUTION** signals a hazard that *may* cause minor to moderate injury, if you do not follow recommendations.

This guide uses **NOTICE** to call attention to important mechanical information, and **Note** to emphasize general information worthy of special attention.

WARNING

INJURY HAZARD

Failure to observe these instructions could lead to severe injury or death.

- ☐ **Always** use extreme caution when cutting and trimming during fitting.
- ☐ **Always** remove jewelry and wear eye protection.
- ☐ **Always** use appropriate and adequate care in lifting components into place.
- ☐ **Always** insure components will remain secure during installation and operation.
- ☐ **Always** tighten all nuts and bolts securely, per the installation and operation.
- ☐ **Always** perform regular inspections and maintenance on the bumper and related hardware.
- ☐ **Never** operate this **WARN** product with damaged or missing parts.

NOTES

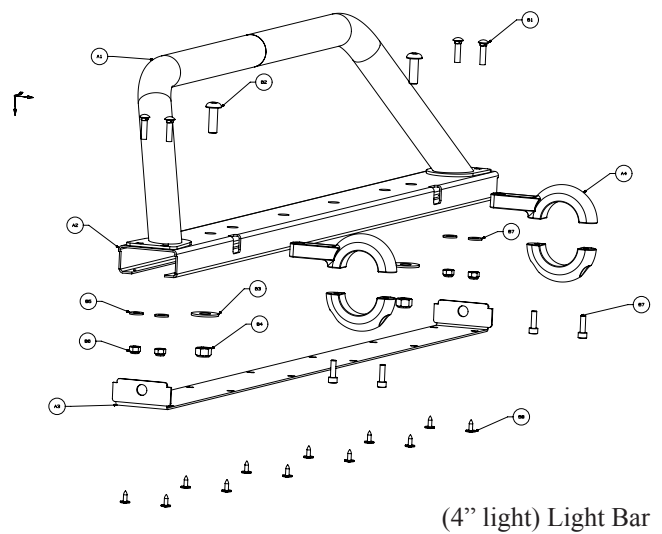
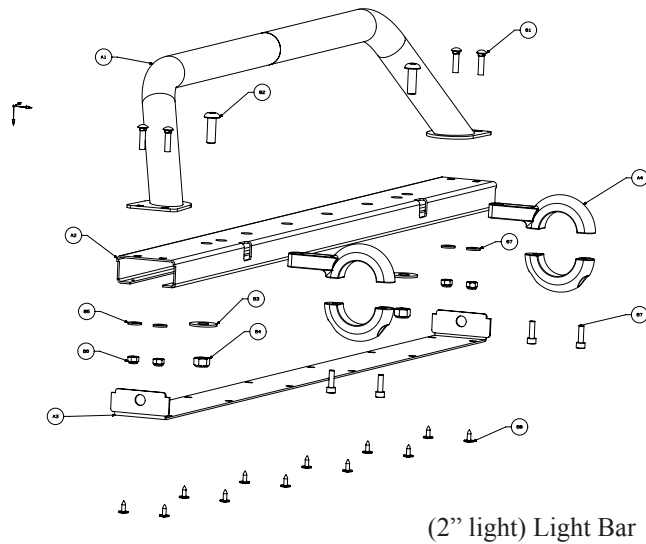
Instructions for mounting accessory trail lights are included on page 6.

I. TABLE OF CONTENTS

| | |
|-----------------------|----------|
| Parts List | page 2 |
| Tools Required | page 2 |
| Torque Specifications | page 2 |
| Installation | page 3-6 |
| Maintenance/Care | page 6 |

I. PARTS LIST

| <u>ID</u> | <u>P/N</u> | <u>QTY</u> | <u>DESCRIPTION</u> |
|-----------|------------|------------|-----------------------------------|
| A1 | 84242 | 1 | 2 INCH TUBE WELDMNT |
| OR | | | |
| A1 | 83626 | 1 | 4 INCH TUBE WELDMNT |
| A2 | 84361 | 1 | 2 INCH LIGHT BRACKET |
| OR | | | |
| A2 | 83967 | 1 | 4 INCH LIGHT BRACKET |
| A3 | 83971 | 1 | LIGHT BAR COVER |
| A4 | 84240 | 2 | BILLET LIGHT CLAMP |
| B1 | 22063 | 4 | ¼-20 BLACK CARRIAGE BOLT |
| B2 | 84879 | 2 | M10X 1.5 BLACK BUTTON HEAD BOLT |
| B3 | 9213 | 2 | FLAT WASHER |
| B4 | 69807 | 2 | M10 x 1.5 NYLOCK NUT |
| B5 | 1320 | 4 | ¼-20 FLAT WASHER |
| B6 | 6725 | 4 | ¼-20 NYLOCK NUT |
| B7 | 84881 | 4 | M6-1 X 20MM SOCKET HEAD SCREW S/S |
| B8 | 26895 | 12 | BLACK SCREWS |



II. TOOLS REQUIRED

- Ratchet
- 7/16" Deep Socket or wrench
- 17mm Socket
- Metric Allan Wrenches

III. TORQUE SPECIFICATIONS

| | |
|----------|------------------------|
| 1/4, 6mm | 8 lb. ft. (10.8 N-m) |
| 5/16 | 17 lb. ft. (12.5 N-m) |
| 3/8 | 30 lb. ft. (40.7 N-m) |
| 7/16 | 50 lb. ft. (67.8 N-m) |
| 1/2 | 75 lb. ft. (101.7 N-m) |

IV. INSTALLATION

1. Place clamps on cross tube using the supplied M6-1 x 20mm s/s screws supplied with clamps. Do not tighten at this time so clamps can be adjusted on the tube. See figure 1. Depending on the size of the cross tube use the supplied insert in the I.D. of the clamps.



Figure 1

2. Measure the distance between the holes on the clamps, and then center clamps from end to end. If you have purchased the 4in. light bar, the measurement is 24 in. from center of hole to center of hole. If you purchased the 2in. light bar, the measurement is 21 in. Level the clamps and tighten. See figure 2.

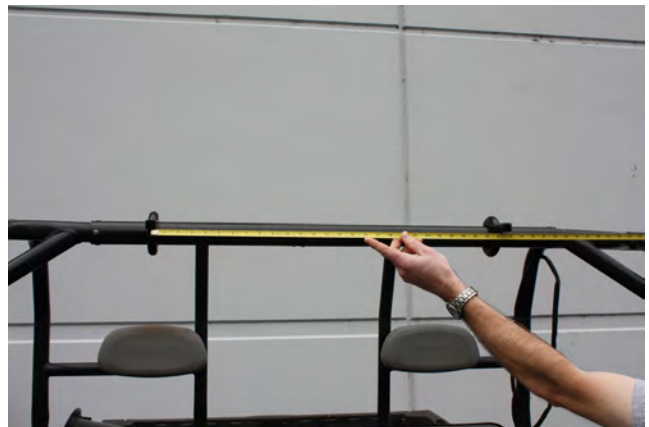


Figure 2

3. Set the light bar bracket onto the clamps by placing the end of the clamp through the hole and centering to the mounting hole. See figure 4.



Figure 3

INSTALLATION CONT.

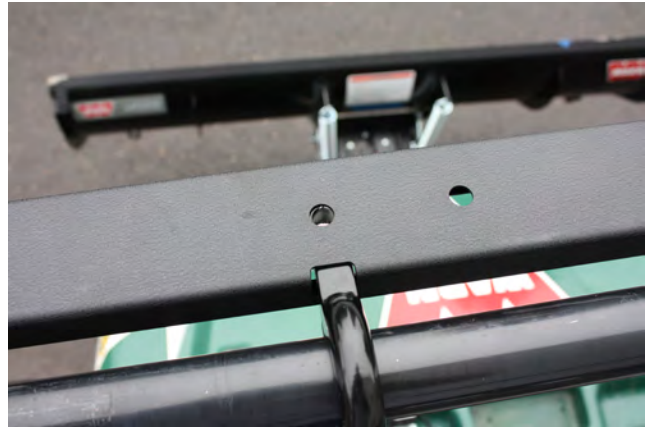


Figure 4

4. Place the black M10 x 1.5 fastener through the hole and secure with washer and lock nut supplied in the hardware kit. See figure 5.



Figure 5

5. The clamps and light bar bracket should be tight at this time. Now place the light bar on top of the bracket and secure in place with the black 1/4-20 carriage bolts, washers, and lock nuts supplied in hardware kit. See figure 6.



Figure 6

INSTALLATION CONT.

6. You are now ready to place your lights on the light bar bracket. Secure your lights at this time you can fine tune them later. See figure 7.

NOTE: Make sure that your wire harness runs through the cover plate and is connected to the lights before continuing on to the next step



Figure 7

7. The light bar bracket cover goes on last, it is secured with the black screws supplied in the hardware kit.

| |
|--|
| ⚠ NOTICE |
| The hole in the end of the cover in figure 8. There is a hole on either side for your wire harness to come through. See figure 8 |



Figure 8

8. The final assembly should look like Figure 9. Although this picture only shows two lights, the four inch light bar can hold up to four lights. The two inch light bar can hold up to six lights.

**PROCEED TO SECTION TITLED
“MAINTENANCE/CARE”.**

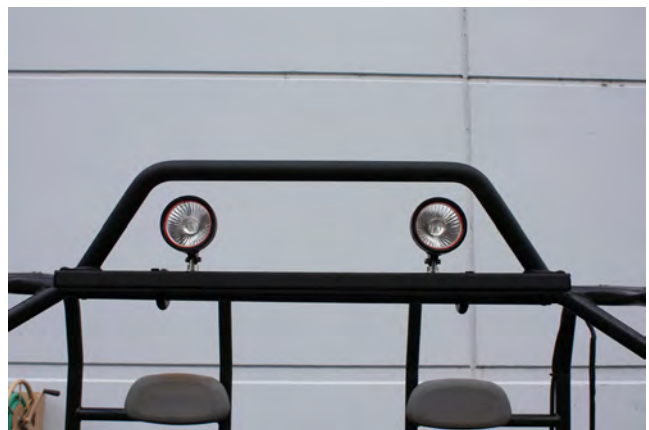


Figure 9

V. MAINTENANCE/CARE

1. Inspect all parts on the light bar and related hardware prior to each use. Replace all hardware that appears rusted or deformed.

WARNING

FAILURE TO SECURELY TIGHTEN ALL BOLTS ON THE LIGHT BAR CAN RESULT IN PRODUCT FAILURE WHICH MAY RESULT IN VEHICLE DAMAGE AND OPERATOR INJURY. DOUBLE CHECK THAT ALL BOLTS ARE SECURELY TIGHTENED PRIOR TO USE.