



INSTALLATION INSTRUCTIONS

FRONT PLOW MOUNT KIT

Part Number: 87758

Application: Polaris Sportsman 400, 500, 800

GENERAL SAFETY PRECAUTIONS

Your safety, and the safety of others, is very important. To help you make informed decisions about safety, we have provided installation and operating instructions and other information on labels and in this guide. This information alerts you to potential hazards that could hurt you or others. It is not possible to warn you about all potential hazards associated with this product, you must use your own good judgment.

CARELESS INSTALLATION AND OPERATION CAN RESULT IN SERIOUS INJURY OR EQUIPMENT DAMAGE. READ AND UNDERSTAND ALL SAFETY PRECAUTIONS AND OPERATING INSTRUCTIONS BEFORE INSTALLING AND OPERATING THIS PRODUCT.

This guide identifies potential hazards and has important safety messages that help you and others avoid personal injury or death. **WARNING** and **CAUTION** are signal words that identify the level of hazard. These signal words mean:

▲WARNING signals a hazard that could cause serious injury or death, if you do not follow recommendations. **▲CAUTION** signals a hazard that may cause minor to moderate injury, if you do not follow recommendations.

This guide uses **NOTICE** to call attention to important mechanical information, and **Note:** to emphasize general information worthy of special attention.

▲ WARNING

IMPACT AND MOVING PARTS ENTANGLEMENT HAZARD

Failure to observe these instructions could lead to severe injury or death

- Always Read the Plow Operator's Manual, the Winch Operator's Manual and all warning labels before operating.
- Always use extreme caution when drilling on any vehicle. Make sure that all fuel lines, brake lines, electrical wires, and other objects are not punctured or damaged when/if drilling on the vehicle. Thoroughly inspect the area to be drilled (on both sides of material) prior to drilling, and relocate any objects that may be damaged. Failure to inspect the area to be drilled may result in vehicle damage, electrical shock, fire or personal injury.
- Always wear safety glasses when installing this kit. A drilling operation will cause flying metal chips. Flying chips can cause eye injury.
- Always use extreme caution when cutting and trimming during fitting.
- Always remove jewelry and wear eye protection.
- Never lean over battery while making connections.
- Never route electrical cables:
 - o Across any sharp edges.
 - o Through or near moving parts.
 - o Near parts that become hot.
- Always insulate and protect all exposed wiring and electrical terminals.
- Always install terminal boots as directed in installation instructions.
- Always use appropriate and adequate care in lifting components into place.
- Always insure components will remain secure during installation and operation.
- Always tighten all nuts and bolts securely, per the installation instructions.
- Always operate the vehicle at a walking speed with the blade installed. Never exceed 5 mph (8 km/h), even with blade up.
- Always plow cautiously, impact with hidden or stationary object may cause the vehicle to stop suddenly or go out of control.
- Never operate the vehicle on slopes greater than 10 degrees with the plow installed.
- Never stand or ride on the plow.
- Always stay clear of moving parts and joints. Always keep others away when operating or adjusting plow.
- Always perform regular inspections and maintenance on the plow mechanism, fasteners, cable and related hardware.
- Always replace all worn or damaged parts before operating.
- Never operate this WARN product with damaged or missing parts.
- Always drive slowly over bumpy and rough terrain. Driving at speeds that cause the plow to bounce while in the up position can cause the winch to back-drive, causing the plow to work its way down. This may result in the plow impacting a stationary object and cause damage to the vehicle and operator injury or death.
- Always drive at speeds such that the plow does not bounce and be aware of the plow position while driving at all times.
- Always be aware that the purpose of the j-bolt is to break the connection between the plow and the winch, to prevent serious damage to the ATV if the plow is raised too high. The plow blade will drop suddenly if the j-bolt breaks, so always be sure there are no bystanders when you raise and lower the plow.
- Never raise the top of the plow above the headlights of the ATV, as it may damage the vehicle and plow.
- Always replace a deformed or broken j-bolt with the spare j-bolt included in the kit.

Read installation and operating instructions thoroughly.

WARN INDUSTRIES, INC. 12900 S.E. Capps Road,
Clackamas, OR USA 97015-8903, 1-503-722-1200, FAX: 1-503-722-3000
Customer Service: 1-800-543-9276
Dealer Locator Service: 1-800-910-1122
International Sales/ Customer Service: 1-503-722-3008
International Fax: 1-503-722-3005

⚠ CAUTION

MOVING PARTS ENTANGLEMENT HAZARD

Failure to observe these instructions could lead to minor or moderate injury

- Always take time to fully read and understand the installation and Operations Guide included with this product.
- Never operate this product if you are under 16 years of age.
- Never operate this product when under the influence of drugs, alcohol or medications.

Read installation and operating instructions thoroughly.

NOTICE

EQUIPMENT DAMAGE

- Always refer to the Installation and Specification Guide, supplied in the winch kit, for all wiring schematics and specific details on how to wire this WARN product to your vehicle.
- Never overtighten the j-bolt to the bracket. Doing so will pinch the winch cable against the bracket, damaging the cable.
- Always put the end of the actuator cable through the slot in the Termination Bracket. Terminating the cable through any other hole in the bracket will cause the bracket to not function properly and will drastically reduce the life of the actuator cable.

Read installation and operating instructions thoroughly.

BEFORE YOU BEGIN

- Always Read the Plow Operator's Manual, the Winch Operator's Manual and all warning labels before operating.
- Always use extreme caution when cutting and trimming during fitting.

TABLE OF CONTENTS

Tools Required.....	page 2
Torque Specifications.....	page 2
Parts List.....	page 3
Installation.....	page 4-6
Maintenance/Care.....	page 6

TOOLS REQUIRED

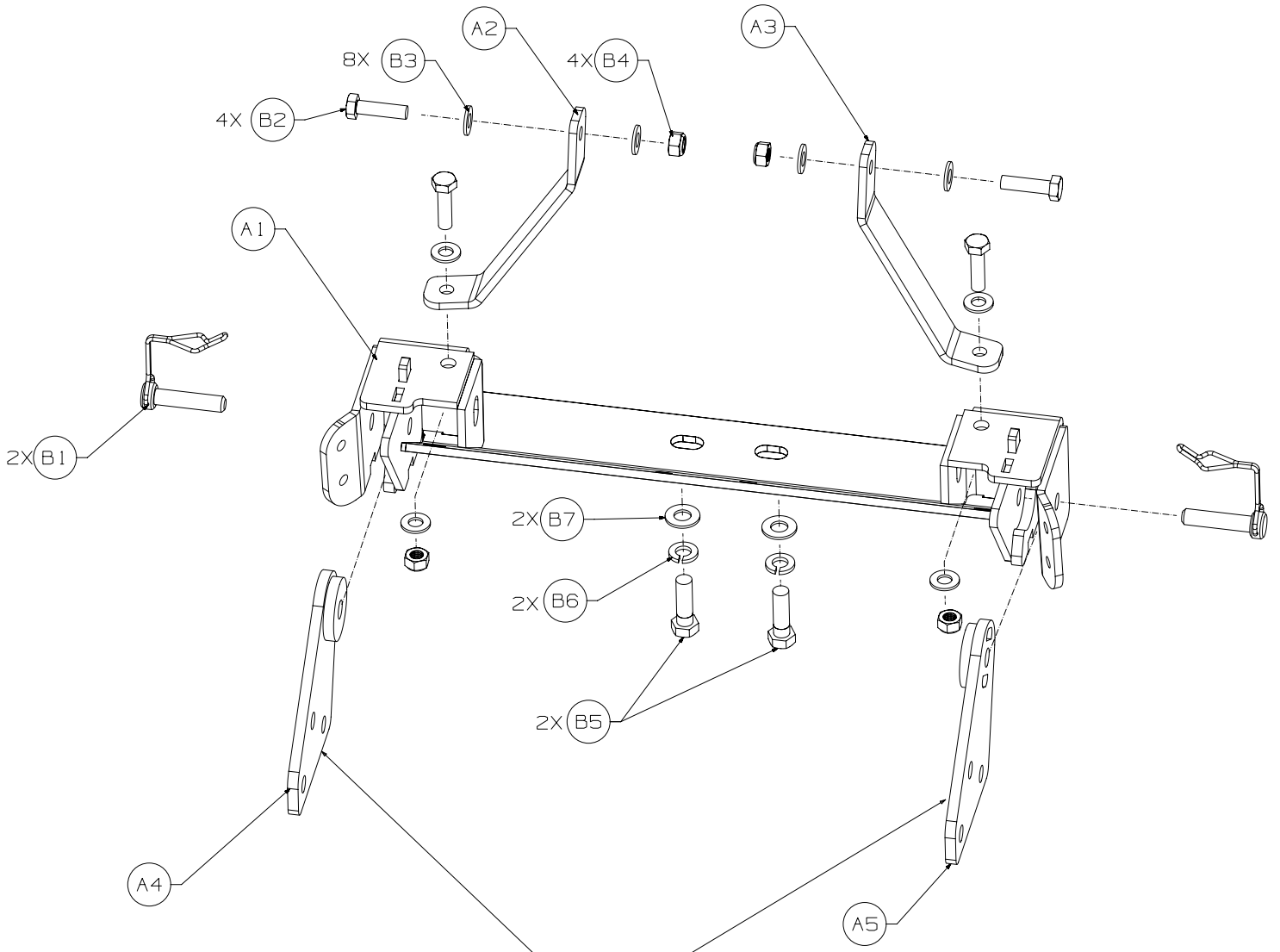
- Metric Wrench Set
- Metric Socket Set
- 3/8 Drive Ratchet

TORQUE SPECIFICATIONS

1/4 (6mm)	8 lb. ft. (10.8 N-m)
5/16 (8mm)	17 lb. ft. (12.5 N-m)
3/8 (10mm)	30 lb. ft. (40.7 N-m)
7/16 (11mm)	50 lb. ft. (67.8 N-m)
1/2 (13mm)	75 lb. ft. (101.7 N-m)

PARTS LIST

Description	Qty	Ref.
Bracket Assembly	1	A1
Bracket RH	1	A2
Bracket LH	1	A3
Bracket Bolt-on RH	1	A4
Bracket Bolt-on LH	1	A5
Retaining Pin	2	B1
M8-1.25x30mm Hex Head Bolt	6	B2
5/16 Flat Washers	10	B3
M8-1.25 Locking Nut	4	B4
3/8-16 x 1 1/4 Hex Head Bolt	2	B5
3/8 Lock Washer	2	B6
3/8 Flat Washer	2	B7



A4 AND A5 GET BOLTED TO THE PLOW ARMS IN THE PLOW KIT.

INSTALLATION INSTRUCTIONS

1. To aid in the installation of the front plow mount, remove the four torques head screws that hold the lower plastic on the vehicle.



Figure 1

2. Figure 2 shows the plastic removed exposing the frame. Note that there is no winch mounted to the vehicle in this photo. You may have decided to use the Pro Vantage plow lift system rather than to use a winch to lift your plow. In this situation your left and right hand strap will be using the hole indicated in figure 2. Explained better in later part of instructions.



Figure 2

3. If winch is already installed It will look like figure 3.



Figure 3

INSTALLATION INSTRUCTIONS

4. Remove the four bolts shown in figure 4. Retain the two screws located under the tow loop, as you will re-install them in the next step. You will replace the two differential bolts with the longer 3/8-16 bolts supplied in the hardware kit.



Figure 4

5. Attach the mount with the new longer 3/8-16 hex head bolts, lock washers and flat washers. Located at the bottom of the mount. Do not tighten at this time. Reinstall the factory hex head screws located just under the tow loop. You may tighten all the screw at time.

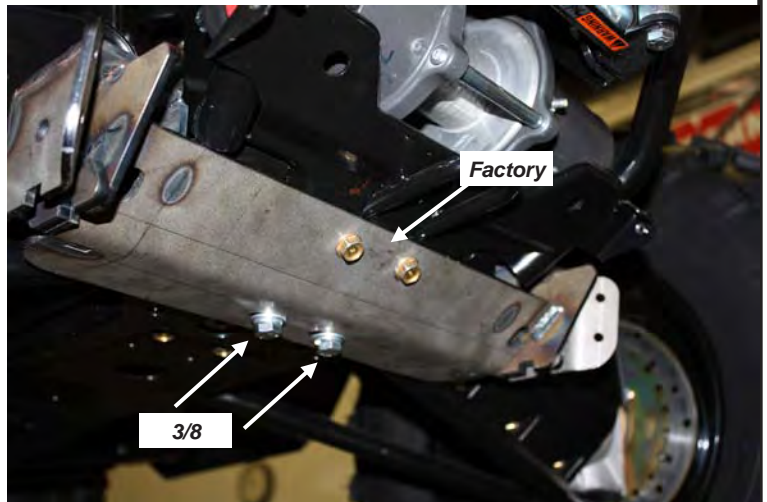


Figure 5

6. If winch is already installed remove the upper mounting bolt to the winch mount as indicated in Figure 6. Save the lock washers as you will use them with the flat washers and new M8 hex bolts supplied in the front plow mount hardware kit.



Figure 6

7. Install the left and right hand strap placing the short end of the strap on the top of the plow mount over the hole as seen in figure Figure 8. Figure 7 shows the placement of the washer and nut through the front of the mount to attach the strap to the top of the mount.



Figure 7

8. Thread the new bolt, lock washer, and flat washer into the top of the winch mount, do not tighten. Insert the bolt, flat washers, and lock nut and tighten all fasteners at this time. Repeat the steps for the other side at this time. Torque all hardware to listed specifications and your kit is now installed. You may now reattach the lower plastic at this time.



Figure 8

9. Plow arm tabs get attached to the plow arm when you purchase the plow kit. Note, that the tabs are bolted to the inside of the tabs on the plow arms.

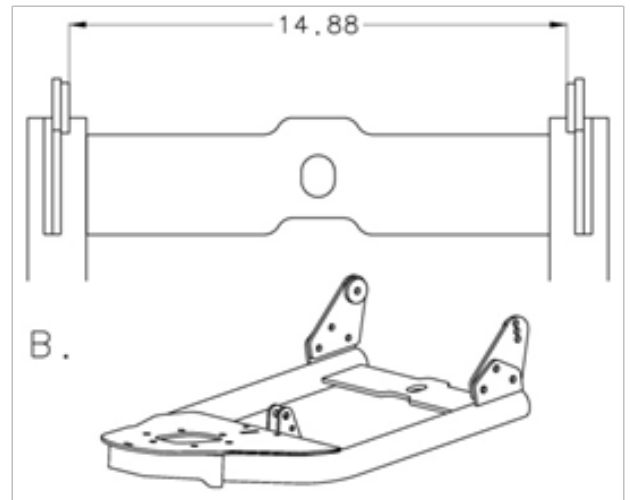


Figure 9

MAINTENANCE / CARE

1. Inspect all parts on the plow, plow mount, and related hardware prior to each use. Replace all hardware that appears rusted or deformed.
2. Inspect all nuts and bolts on the plow, plow mount, and related hardware prior to each use. Tighten all nuts that appear to be loose. Stripped, fractured, or bent bolts or nuts need to be replaced.
3. Check all cables prior to use. Replace cables that look worn or frayed.
4. Check all moving or rotating parts. Remove debris that may inhibit the part from moving freely.