



INSTALLATION INSTRUCTIONS

WINCH MOUNT KIT

Part Number: 87987

Application: Polaris Ranger RZR 900 2011+

GENERAL SAFETY PRECAUTIONS

Your safety, and the safety of others, is very important. To help you make informed decisions about safety, we have provided installation and operating instructions and other information on labels and in this guide. This information alerts you to potential hazards that could hurt you or others. It is not possible to warn you about all potential hazards associated with this product, you must use your own good judgment.

CARELESS INSTALLATION AND OPERATION CAN RESULT IN SERIOUS INJURY OR EQUIPMENT DAMAGE. READ AND UNDERSTAND ALL SAFETY PRECAUTIONS AND OPERATING INSTRUCTIONS BEFORE INSTALLING AND OPERATING THIS PRODUCT.

This guide identifies potential hazards and has important safety messages that help you and others avoid personal injury or death. **WARNING** and **CAUTION** are signal words that identify the level of hazard. These signal words mean:

▲ **WARNING** signals a hazard that could cause serious injury or death, if you do not follow recommendations. ▲ **CAUTION** signals a hazard that may cause minor to moderate injury, if you do not follow recommendations.

This guide uses **NOTICE** to call attention to important mechanical information, and **Note:** to emphasize general information worthy of special attention.

▲ WARNING

IMPACT AND MOVING PARTS ENTANGLEMENT HAZARD

Failure to observe these instructions could lead to severe injury or death

- Always use extreme caution when drilling on any vehicle. Make sure that all fuel lines, brake lines, electrical wires, and other objects are not punctured or damaged when / if drilling on the vehicle. Thoroughly inspect the area to be drilled (on both sides of material) prior to drilling, and relocate any objects that may be damaged. Failure to inspect the area to be drilled may result in vehicle damage, electrical shock, fire or personal injury.
- Always wear safety glasses when installing this kit. A drilling operation will cause flying metal chips. Flying chips can cause eye injury.
- Always use extreme caution when cutting and trimming during fitting.
- Always remove jewelry and wear eye protection.
- Never lean over battery while making connections.
- Never route electrical cables:
 - Across any sharp edges.
 - Through or near moving parts.
 - Near parts that become hot.
- Always insulate and protect all exposed wiring and electrical terminals.
- Always install terminal boots as directed in installation instructions.
- Always use appropriate and adequate care in lifting components into place.
- Always insure components will remain secure during installation and operation.
- Always tighten all nuts and bolts securely, per the installation and operation.
- Always perform regular inspections and maintenance on the winch, winch mount and related hardware.
- Never operate this WARN product with damaged or missing parts.

Read installation and operating instructions thoroughly.

WARN INDUSTRIES, INC. 12900 S.E. Capps Road,
Clackamas, OR USA 97015-8903, 1-503-722-1200, FAX: 1-503-722-3000
Customer Service: 1-800-543-9276
Dealer Locator Service: 1-800-910-1122
International Sales/Customer Service: 1-503-722-3008
International Fax: 1-503-722-3005

⚠ CAUTION

MOVING PARTS ENTANGLEMENT HAZARD

Failure to observe these instructions could lead to minor or moderate injury

- Always take time to fully read and understand the installation and Operations Guide included with this product.
- Never operate this product if you are under 16 years of age.
- Never operate this product when under the influence of drugs, alcohol or medications.

Read installation and operating instructions thoroughly.

NOTICE

EQUIPMENT DAMAGE

- Always refer to the Installation and Specification Guide, supplied in the winch kit, for all wiring schematics and specific details on how to wire this WARN product to your vehicle.

Read installation and operating instructions thoroughly.

NOTES

NOTE: This bumper includes mounting holes for WARN winch and trail lights, which are sold separately

TABLE OF CONTENTS

Tools Required.....	page 2
Torque Specifications.....	page 2
Parts List.....	page 3
Installation.....	page 4-5
Maintenance/Care.....	page 6

TOOLS REQUIRED

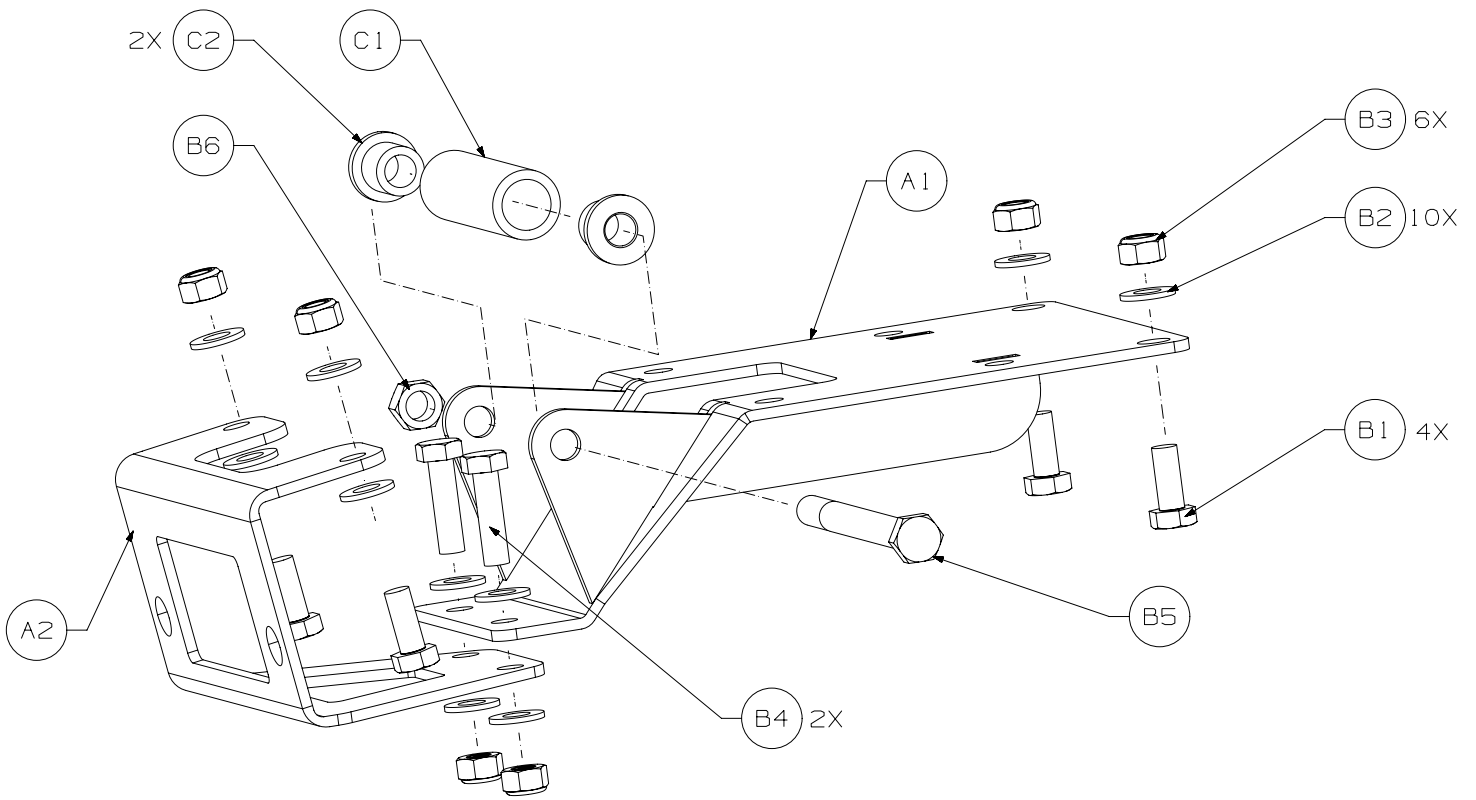
- Standard & Metric Socket Set
- Standard & Metric Wrench Set
- Torx Drivers T20 - T27

TORQUE SPECIFICATIONS

1/4	8 lb. ft. (10.8 N-m)	6mm bolts 12 N-m (9ft.-lb)
5/16	17 lb. ft. (12.5 N-m)	8mm bolts 16 N-m (12ft - lb)
3/8	30 lb. ft. (40.7 N-m)	10mm bolts 47 N-m (35ft-lb)
7/16	50 lb. ft. (67.8 N-m)	
1/2	75 lb. ft. (101.7 N-m)	

PARTS LIST

Part Number	Qty	Description
A1	1	Winch Mount
A2	1	Fairlead Support Bracket
B1	4	M8-1.35 x 20mm Bolt
B2	10	Flat Washer
B3	6	M8-1.25 Lock Nut
B4	2	M8-1.25 x 30mm Bolt
B5	1	3/8-16 x 4 1/2 Bolt
B6	1	3/8-16 Lock Nut
C1	1	Roller Fairlead
C2	2	Bushing



INSTALLATION INSTRUCTIONS

1. Remove the 4 screws from the winch cover panel, remove and set aside. Remove the front fascia/headlight assembly. Disconnect head lights from wire harness, remove six screws in center of fascia, remove one screw and one plastic retainer clip from each side of fascia on outside of headlights.



Figure 1

2. Install winch mounting bracket behind radiator as shown in fig 2. Install but do not tighten two M8 x 25mm bolts, flat washers and two nylock nuts to secure rear of bracket to vehicle frame. Refer to exploded view for details. It may be easier to install the bolts up through the frame and then through the bracket as shown in the exploded view. Do not in-install the two front bolts yet as you will do so in the next step.

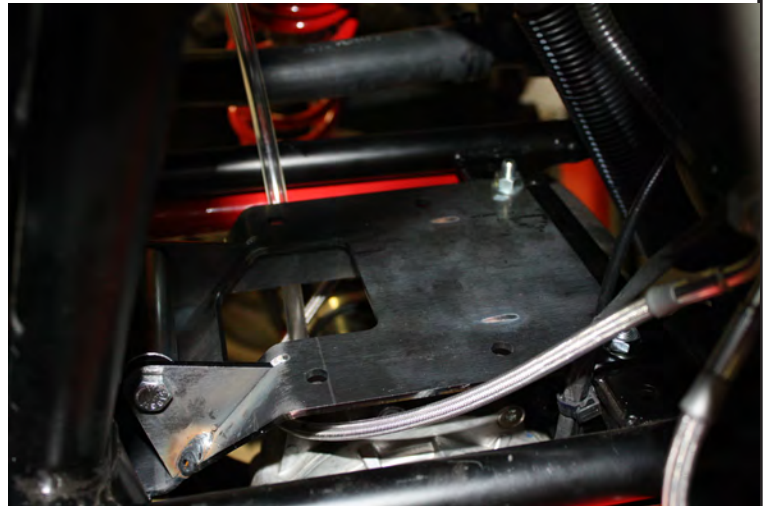


Figure 2

3. It may be easier to install the fairlead mount by removing the vehicles hood at this time and remove the two radiator hold down bolts located at the top center of the radiator. Carefully lift the radiator about a ½ an inch up and to the side to give yourself a little more room to install the upper M8 bolts on the upper part of the fairlead bracket.

4. Figure 3 shows the four mounting locations required to attach the fairlead bracket, note that the top two holes just under the radiator have the bolts already installed in this photo. The lower two holes attach the bottom of the fairlead bracket and also the front of the winch mount with the frame between both. Refer to the exploded view for details.

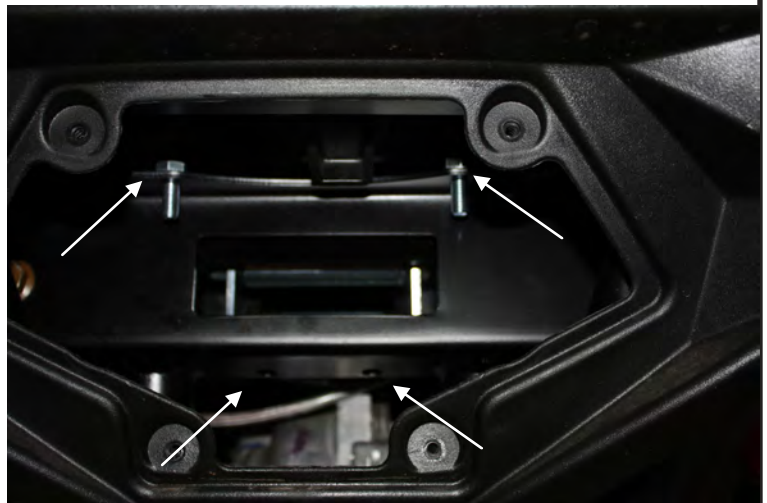


Figure 3

5. Figure 4 shows the Roller fairlead attached to the bracket after the bracket was installed, it is easier to do before the plastic is reinstalled.

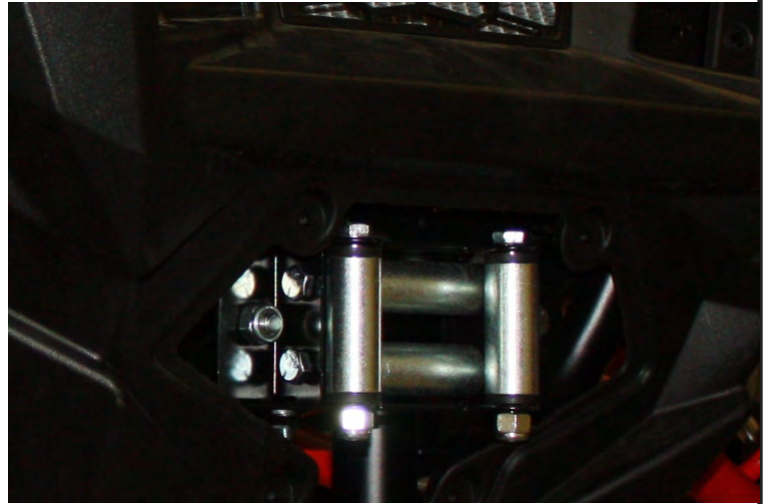


Figure 4

⚠ WARNING

FAILURE TO SECURELY TIGHTEN ALL BOLTS ON THE BUMPER CAN RESULT IN PRODUCT FAILURE WHICH MAY RESULT IN VEHICLE DAMAGE AND OPERATOR INJURY OR DEATH. DOUBLE CHECK THAT ALL BOLTS ARE SECURELY TIGHTENED PRIOR TO USE.

MAINTENANCE / CARE

1. Inspect all parts on the bumper and related hardware prior to each use. Replace all hardware that appears rusted or deformed.
2. Inspect all nuts and bolts on the bumper, and related hardware prior to each use. Tighten all nuts that appear to be loose. Stripped, fractured, or bent bolts or nuts need to be replaced.
3. Check all moving or rotating parts. Remove debris that may inhibit the part from moving freely.

⚠ WARNING

PERFORM REGULAR INSPECTIONS ON THE BUMPER AND RELATED HARDWARE. FAILURE TO FOLLOW THIS WARNING MAY CAUSE VEHICLE DAMAGE AND OPERATOR INJURY OR DEATH.

CARELESS INSTALLATION AND OPERATION CAN RESULT IN SERIOUS INJURY OR EQUIPMENT DAMAGE. READ AND UNDERSTAND ALL SAFETY PRECAUTIONS AND OPERATING INSTRUCTIONS BEFORE INSTALLING AND OPERATING THIS PRODUCT.

