

INSTRUCTIONS—INSTRUCCIONES—CONSIGNES

APPLICATION: 2011 FORD EXPLORER
APP PART # 25-3600, 25-3605, 26-3600
SIGNATURE/PLATINUM SERIES STEP BARS

| ITEM | QUANTITY | DESCRIPTION | TOOLS NEEDED |
|------|----------|---|---------------|
| 1 | 2 | STEP BARS | 18MM SOCKET |
| 2,3 | 2 | FRONT MOUNTING BRACKETS (2) DRIVERS SIDE, (3) PASSENGER SIDE | 13MM SOCKET |
| 4,5 | 2 | REAR MOUNTIGN BRACKETS (4) DRIVERS SIDE, (5) PASSENGER SIDE | 9/16" SOCKET |
| 6 | 4 | M12 BOLT PLATES | RATCHET |
| 7 | 4 | M12 FLAT WASHERS | TORQUE WRENCH |
| 8 | 4 | M12 LOCK WASHERS | ALLEN WRENCH |
| 9 | 4 | M12 HEX NUTS | |
| 10 | 6 | J BOLTS | |
| 11 | 6 | M10 FLAT WASHERS | |
| 12 | 6 | 3/8" LOCK WASHER | |
| 13 | 6 | 3/8" HEX NUT | |
| 14 | 2 | M8 HEX HEAD BOLT | |
| 15 | 4 | M8 FLAT WASHERS | |
| 16 | 2 | M8 LOCK WASHERS | |
| 17 | 2 | M8 HEX NUTS | |
| 18 | 8 | 3/8" BUTTON HEAD BOLTS | |
| 19 | 8 | 3/8" TOOTH LOCK WASHERS | |
| 20 | 4 | PLASTIC RETAINERS | |

1. Remove all contents from box, verify all parts listed are present and free from damage. Carefully read and understand all instructions before attempting installation.
2. Unsecure the driver side rocker panel trim by releasing the plastic retainers along the bottom using a pair of small screwdrivers. With the doors open remove the two forward most retainers by sliding them down and off of the plastic rocker panel trim. (Fig 1,2).
3. Insert (2) J-Bolts into the two slots no longer covered by the plastic retainers. Slight trimming of the plastic is recommended to add clearance for nuts and washers. (Fig 3)
4. Insert (1) bolt plate into the front driver side slot under the vehicle (Fig 4). Use a clear plastic retainer to prevent losing the bolt plate in the body while installing the bracket. NOTE: Some models have additional sheet metal within the uni-body on the driver side front slot. Installation of bolt plate requires inserting the bolt plate threaded end first and pulling the bolt into an appropriate position with a magnet prior to installing the plastic retainer.
5. Lift the rocker panel trim away from the body and install the driver side front bracket over the two j-bolts and bolt plate. Secure using (1) M12 flat washer, (1) M12 split lock washer, (1) M12 hex nut, (2) M10 flat washers, (2) 3/8" internal tooth lock washers and (2) 3/8" hex nuts. The step bar cradle faces the rear of the vehicle (Fig 5). Do not tighten fully at this time.

6. Insert (1) bolt plate into the rear driver side slot under the vehicle using a plastic retainer. Use the rear bracket to line up where the pinch weld must be drilled such that the bracket will be square and level. The step bar cradle faces the front of the vehicle. Center punch and drill a 3/8"-7/16" hole. (Fig 6 and 7)
7. Install driver side rear bracket and secure using (1) M12 flat washer, (1) M12 split lock washer, (1) M12 hex nut, (1) M8 hex head bolt, (2) M8 flat washers, (1) M8 split lock washer and (1) M8 hex nut. Do not tighten fully at this time.
8. Take the drivers side step bar and align it with the mounting brackets attach the step bars using (4) 3/8" button head bolts, and (4) 3/8" tooth lock washers. Do not fully tighten at this time
9. Repeat steps 2-8 for passenger side
10. Align and adjust the step bars as needed then fully tighten all hardware at this time. Torque all M12 hardware to 50-55 ft lbs, M8 to 30-35, and 3/8" to 35 ft lbs

CARE INSTRUCTIONS

- REGULAR WAXING IS RECOMMENDED. DO NOT USE ANY TYPE OF POLISH OR WAX THAT MAY CONTAIN ABRASIVES
- STAINLESS STEEL PRODUCTS CAN BE CLEANED WITH MILD SOAP AND WATER. STAINLESS STEEL POLISH SHOULD BE USED TO POLISH SMALL SCRATCHES.
- GLOSS BLACK FINISHES SHOULD BE CLEANED WITH MILD SOAP AND WATER



Fig 1

Retainer locations



Fig 2

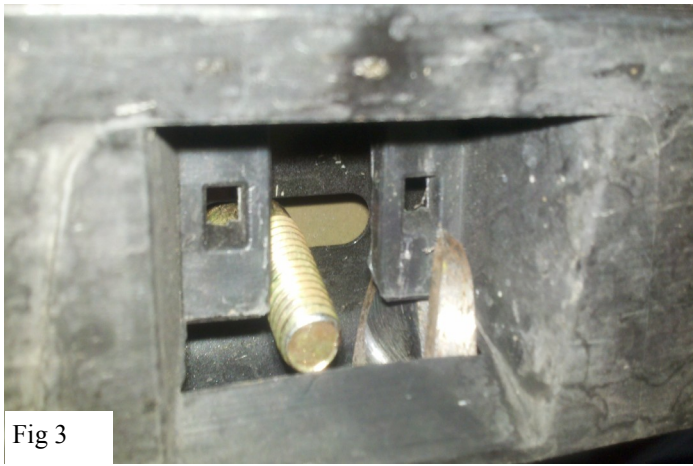


Fig 3



Fig 4

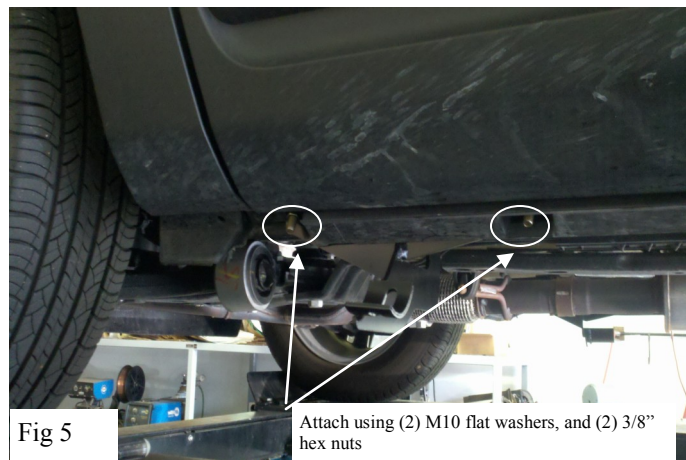


Fig 5

Attach using (2) M10 flat washers, and (2) 3/8" hex nuts



Fig 6



Fig 7



Fig 7

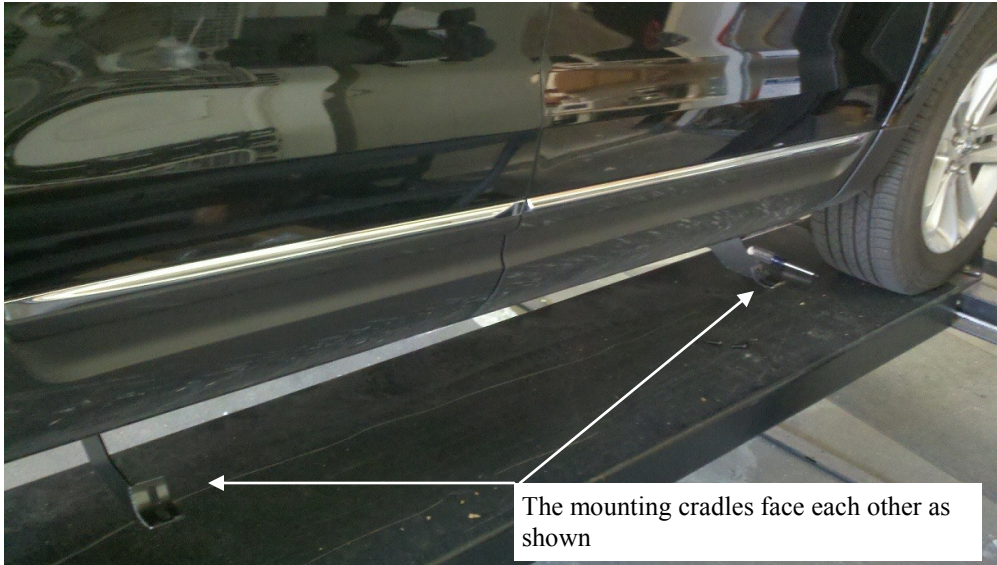


Westing Automotive Products, Inc.
5200 N. Irwindale Ave. Suite 220
Irwindale, Ca. 91706

8/9/2011 P.N.: 75-0037-RevA

PG-3

Thank You for choosing Westin products
For Additional installation assistance please call
Customer service (800) 793-7846
www.westingautomotive.com



Westing Automotive Products, Inc.
5200 N. Irwindale Ave. Suite 220
Irwindale, Ca. 91706

8/9/2011 P.N.: 75-0037-RevA

PG-4

Thank You for choosing Westin products
For Additional installation assistance please call
Customer service (800) 793-7846
www.westinautomotive.com