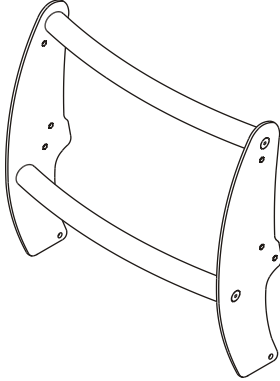




INSTALLATION INSTRUCTIONS

APPLICATION: 1999 CHEVROLET SILVERADO
 1999 GMC SIERRA
 2500 SERIES 2/4 WHEEL DRIVE

AUTOMOTIVE PRODUCTS, INC.

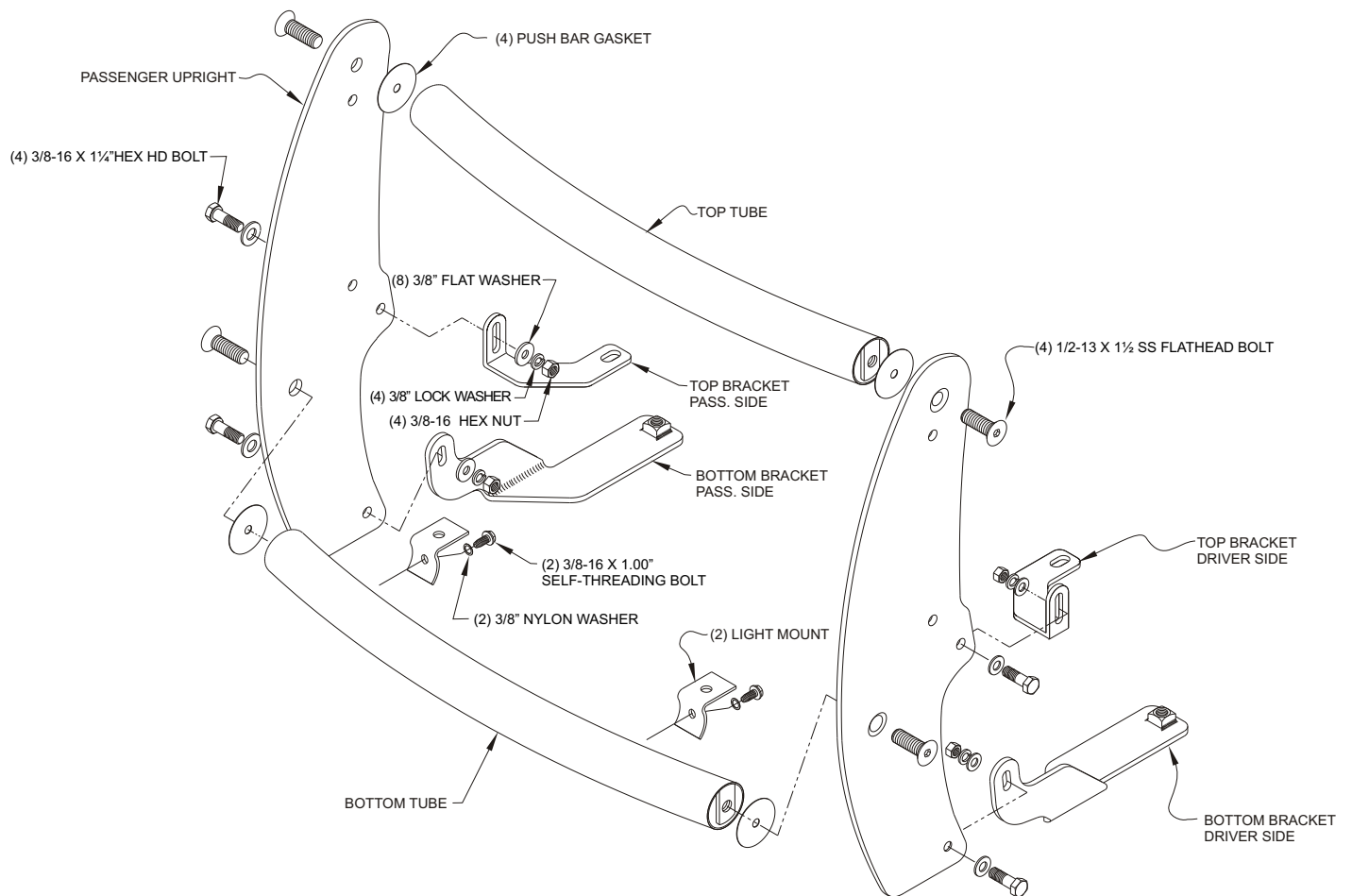
PUSH BAR ASSEMBLIES 36-1950 36-1960	
---	--

QTY	PARTS KIT CONTENTS DESCRIPTION	TOOLS REQUIRED
1	DRIVER UPRIGHT	9/16" WRENCH 9/16" SOCKET 3/4" SOCKET 5/16" HEX WRENCH 19MM SOCKET 10MM SOCKET 18MM SOCKET PHILLIPS SCREWDRIVER SMALL FLAT SCREWDRIVER RATCHET SOCKET EXTENSION TORQUE WRENCH UTILITY KNIFE
1	PASSENGER UPRIGHT	
1	TOP TUBE	
1	BOTTOM TUBE	
2	TOP BRACKET	
2	BOTTOM BRACKET	
2	LIGHT MOUNT	
8	1/2-13 X 1.50" HEX HEAD BOLT	
4	1/2-13 X 1.50" SS FLATHEAD BOLT	
12	1/2" FLAT WASHER	
4	1/2" LOCK WASHER	
2	1/2-13 HEX NUT	
4	3/8-16 X 1.25" HEX HEAD BOLT	
8	3/8" FLAT WASHER	
4	3/8" LOCK WASHER	
4	3/8-16 HEX NUT	
2	3/8" NYLON WASHER	
2	3/8-16 X 1.00" SELF-THREADING BOLT	
2	12MM X 90MM FULL THREAD, HEX HEAD BOLT	
2	SPACER PLATE	
2	SPACER TUBE	
4	PUSH BAR GASKET	

NOTE: SOME FASTENERS WILL BE LEFT OVER AFTER INSTALLATION.

- STEP 1. Remove the contents from the box and check for any damage. Verify all parts against the parts list.
- STEP 2. Read and understand instructions completely before beginning installation.
- STEP 3. Determine Driver and Passenger Uprights and Top and Bottom Tubes. (Uprights are positioned so raised side of bolt holes are facing each other and the Tube with the two pierced holes is the Bottom Tube).
- STEP 4. Fasten Uprights to Top and Bottom Tubes using (4) 1/2 - 13 x 1 1/2" Flathead Bolts, and (4) 3.00" OD Push Bar Gaskets. Level tubes and torque bolts to 60 ft. Lbs.
- STEP 5. Fasten Light Mounts to Bottom Tube using (2) 3/8- 16 x 1.00" Self-threading Bolt and (2) 3/8" Nylon Washers. Tighten and torque to 20 ft. lbs.

- STEP 6. Remove plastic shroud above grille by removing the seven pin retainers. Pull center pin up with small flat screwdriver. **See Figure 1.**
- STEP 7. Remove grille from truck by removing 6mm bolt from top of grille. Turn the four retainers $\frac{1}{4}$ turn counter-clockwise with Phillips screwdriver. Pull on outer edge of grille by applying firm pressure away from the fender, repeat on the opposite side. Carefully remove grille from vehicle. **See Figure 1.**
- STEP 8. To install top brackets, remove both 12mm factory bumper bolts from top of frame (located behind the top side of bumper). On each side, replace with spacer tube, top mount bracket, $\frac{1}{2}$ " flat washer, $\frac{1}{2}$ " lock washer, and M12- 1.75 x 90mm bolt, finger tighten. **See Figure 3.**
- Note:** For vehicles without tow hooks, cut an opening in the two inside indents in the air dam using a utility knife and skip Step 9. **See Figure 2.**
- STEP 9. Remove 12mm tow hook bolts and switch tow hooks from side to side. Re-install bolts and torque to 60 FT. LBS. Tow hooks should now be facing inside of vehicle.
- STEP 10. Position bottom bracket inside frame and attach using Spacer Plate, $\frac{1}{2}$ " flat washer, $\frac{1}{2}$ " lock washer, and $\frac{1}{2}$ -13 x 1.50" Hex Head Bolt at bottom side of frame.
- STEP 11. Raise the Push Bar up to the brackets and attach using $\frac{3}{8}$ " hardware and hand tighten. Adjust Push Bar to center of truck and torque all fasteners at the frame locations only to: $\frac{1}{2}$ " fasteners = 65 FT. LBS; 12mm fasteners = 60 FT. LBS.
- STEP 12. Remove Push Bar from brackets and re-install vehicle grille and plastic shroud in the opposite order of removal.
- STEP 13. Re-attach Push Bar to brackets and tighten the $\frac{3}{8}$ " bolts to 30 FT. LBS.



Finish protection - Westin products have a high quality finish that must be cared for like any other exposed finish on the vehicle. Protect the finish with a non-abrasive automotive wax (pure carnauba, for example) on a regular basis. The use of cleaner wax or any compound which contains an abrasive is detrimental, as the compounds scratch the finish and open it to corrosion.

