



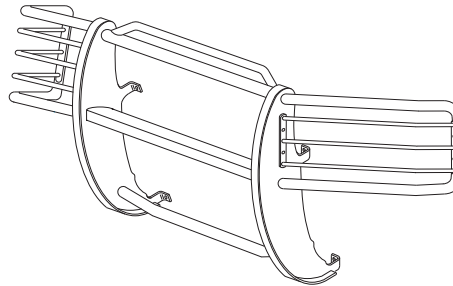
INSTALLATION INSTRUCTIONS

APPLICATION: 1994-01 DODGE RAM 1500 SERIES
1994-02 DODGE RAM 2500/3500 SERIES

AUTOMOTIVE PRODUCTS, INC.

SPORTSMAN
ASSEMBLY

40-0605
45-0600



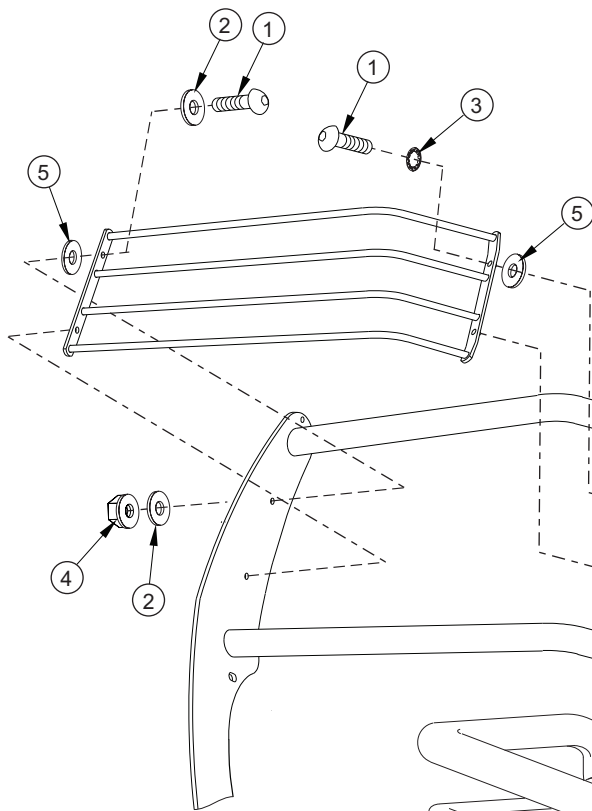
PARTS KIT CONTENTS

ITEM	QTY	DESCRIPTION	ITEM	QTY	DESCRIPTION
1	1	SPORTSMAN ASSEMBLY	8	2	M12 FLAT WASHER
2	2	LIGHT GUARD ASSEMBLY	9	2	M12 LOCK WASHER
3	2	TOP CLAMP	10	2	M10x1.5x40MM HEX HEAD BOLT
4	2	BOTTOM BRACKET	11	2	M10x1.5x30MM HEX HEAD BOLT
5	2	SPACER PLATE	12	4	M10 LARGE FLAT WASHER
6	2	PLASTIC U-CHANNEL	13	4	M10 LOCK WASHER
7	2	M12-1.75 X 120MM HEX HEAD BOLT	14	4	M10x1.5 HEX NUT
			15	4	M10 FLAT WASHER

TOOLS REQUIRED

TORQUE WRENCH 18MM SOCKET DRILL RATCHET SOCKET EXTENSION
FLAT TIP SCREWDRIVER 18MM WRENCH 16MM SOCKET 16MM WRENCH

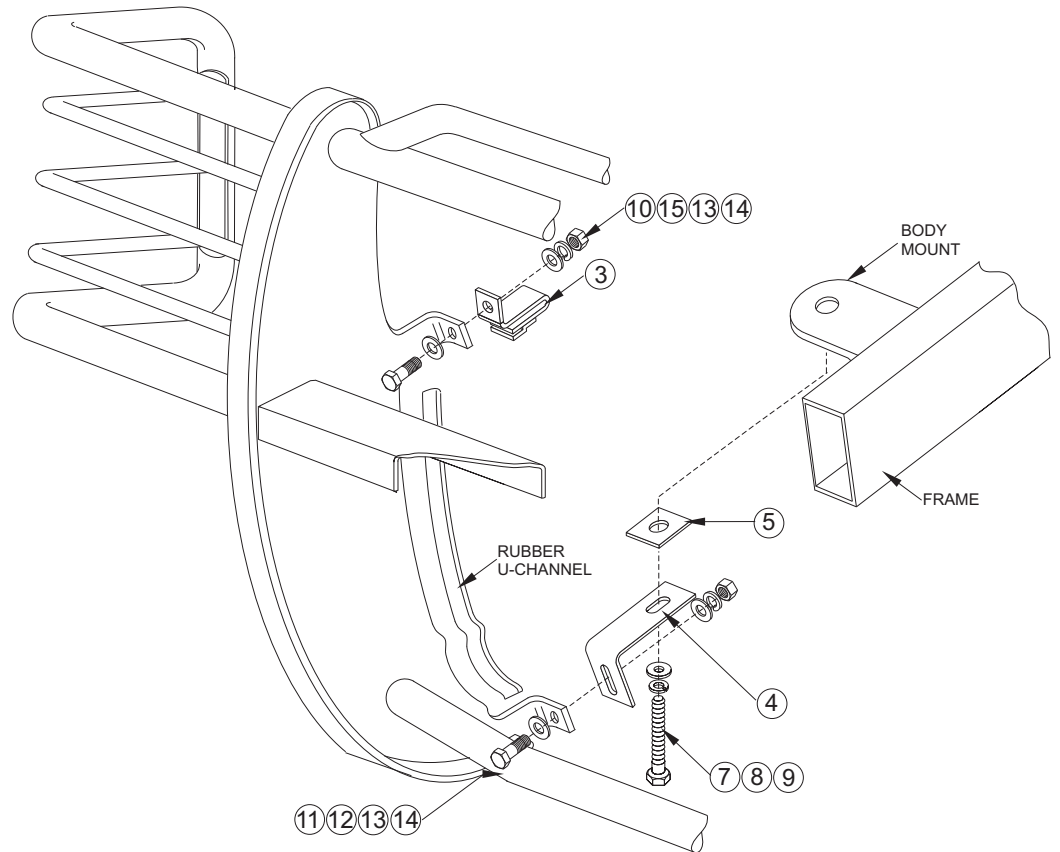
- STEP 1. Remove the contents from box and check for damage. Verify all parts are present. Read instructions completely before beginning.
- STEP 2. Attach light guard assemblies as shown. **SEE FIGURE 1.**
- STEP 3. Raise hood. Hook top clamp over back edge of bumper. Be sure the bumper metal is hooked in the small slot in the clamp. **NOTE:** To help prevent scratching the bumper, apply duct tape or masking tape to the areas of the bumper where the Sportsman may contact it. Remove tape after installation is complete.
- STEP 4. Place u-channel on the inside of the sportsman uprights in the bumper profile.
- STEP 5. Position Sportsman up to bumper and bolt to top clamps using M10 fasteners as shown. Hand tighten.
- STEP 6. Drill a 7/16" diameter hole through the front of air dam at the lower mount tab location. Remove two front body mount bolts. Attach bottom brackets to body mounts as shown. Attach the bottom tab on upright through the air dam to the bottom frame bracket using M10 fasteners as shown. Torque body mount bolts to 65 Ft. Lbs.
- STEP 7. Center and level Sportsman with vehicle. Tighten M10 fasteners at the top and bottom brackets until uprights are tight against the bumper. There may be a gap between the brackets and the upright tab. This is allowable to insure the Sportsman will pull up tight against the bumper.
- STEP 8. Lower hood **SLOWLY!** Check to be sure vehicle grille does not contact top bracket. If there is clearance push down on hood to lock. If there is contact, the Sportsman and/or bumper may need to be adjusted to allow for proper clearance.



ITEM	QTY.	DESCRIPTION
1	8	1/4-20 X 1.00" BUTTON HEAD BOLT
2	8	1/4" FLAT WASHER
3	4	1/4" INTERNAL TOOTH LOCK WASHER
4	4	1/4-20 NYLON NUT
5	8	RUBBER WASHER

NOTE: ALL FASTENERS MAY NOT BE USED.

FIGURE 1
LIGHT GUARD INSTALLATION



Finish protection - Westin products have a high quality finish that must be cared for like any other exposed finish on the vehicle. Protect the finish with a non-abrasive automotive wax (pure carnauba, for example) on a regular basis. The use of cleaner wax or any compound which contains an abrasive is detrimental, as the compounds scratch the finish and open it to corrosion.