



# FITTING INSTRUCTIONS

Upgraded Your Winch with  
T-MAX Boomer Box



12V P/N:7329703.6

24V P/N:7330703.6

## PRODUCTS INTRODUCTION

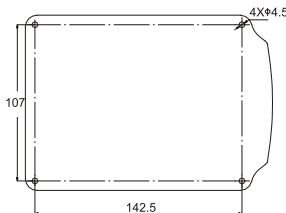
This newly developed Boomer Box is adaptable to DC electric winch as the necessary control system universally and features:

1. Professional appearance design;
2. Durable aluminium structure;
3. Water-resist
4. New Wireless Multi-control;
5. New high-end Integrated Solenoid Module (ISM);

## INSTALLATION

### Mount your Boomer Box

There are 4 holes left on the Plate (P/N: 7329703.1-2), which can be connected with suitable bolts directly to a place on the vehicle you prefer; Or you may use a suitable frame to mount this Boomer Box on the winch Tie Bars. Mounting Pattern is as below.



**WARNING!** The temperature of the Boomer Box will increase because of big current during your winching operation. Especially during extreme winch operation, the temperature may rise to a very high extent. Be sure not to mount the Boomer Box to any place where is not heat-resist and cannot radiate heat. Do not touch the Boomer Box by bare hands immediately after your winching operation. The high temperature will hurt your hands.

### ELECTRICAL CONNECTION

Be sure to observe the following steps for a correct and safe electrical connection:

Step 1. Short Red cable with red sleeve(B') connecting to the red terminal (B) of winch motor.

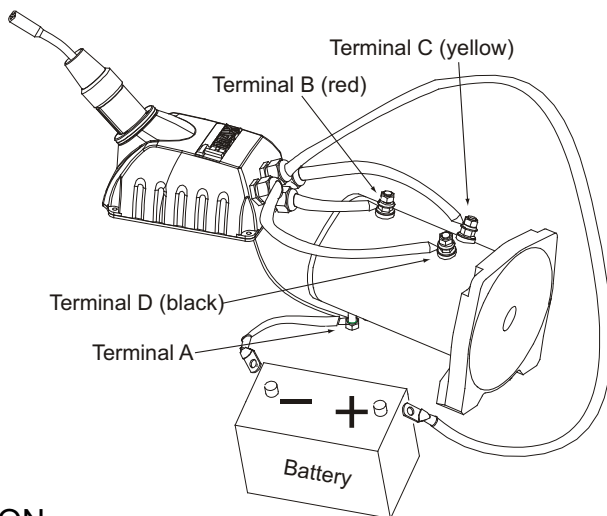
Step 2. Short black cable with yellow jacket(C') connecting to the yellow terminal (C) of winch motor.

Step 3. Short black cable with black jacket(D') connecting to the black terminal(D) of winch motor.

Step 4. Thin black cable (a') connecting to bottom Terminal (A) of winch motor.

Step 5. One end of the Long Black Cable (1.8m) to Terminal (A) of winch motor and the other end to the Negative (-) of the battery.

Step 6. Long red cable (1.8m) connecting to the Positive (+) of battery.



## OPERATION

This Boomer Box presents a wireless Multi-control system to the winch.

1. Radio control: Put the plug into the socket use the handheld controller, Press button "IN" or "OUT" for wire rope in or Out.
2. Wire control: The radio control system is exclusive to each winch. One same handheld controller cannot control another winch wirelessly.



Step1 Connect one end of the control

cable to the interface of the handheld pendant ;

Step2 Another end to the interface of the plug, then put the plug into the socket, press button "IN" or "OUT" for wire rope in or out.

Warning: strictly obey the above steps for wire control and to avoid unintention working the radio control, which will cause serious dangers.

### Radio Control Specifications:

Working Voltage	9V -- 12V
Frequency	433MHz
Power	10mW
Working Temperature	-20°C-- + 60°C
Maximum Control Distance	30m

### Precautions:

- 1) Within a distance of 200 meters, do not operate the winches with same frequency at the same time by Radio Control, for interference will happen among the radio signals with same frequency.

battery inside and clean the circuit board with ethyl alcohol (density Required  $\geq 8\%$ ).

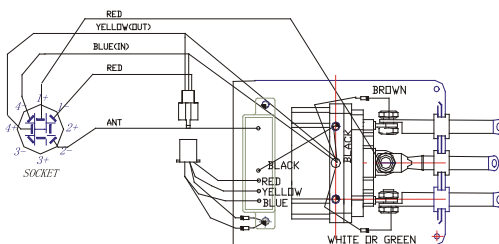
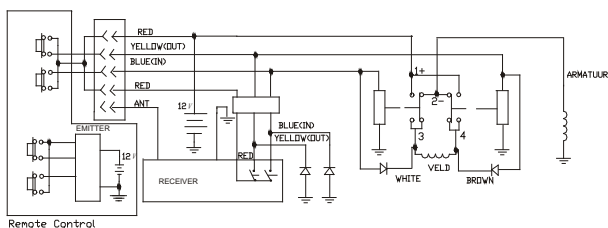
- 3) After a certain period use, change a new battery into the Handheld Controller to ensure sufficient power to the radio control. Low voltage will Result in shorter control distance

**NOTE:** Before the winching operation, press button "IN" and "OUT" to see if the winch is working in correct directions, pulling in wire rope when press "IN", pulling out wire rope press "OUT". Be sure to make this test without any load to the winch. The winch electric circuits from different Manufactures may be a little different , which may result in reverse directions between the indication on the Handheld Controller of your Boomer Box and the winch working. When press "IN" , the winch is pulling "OUT" ; While press out, the winch is pulling in. In this case, please just exchange the connections to the other Terminal on winch motor between two Short Black Cables.

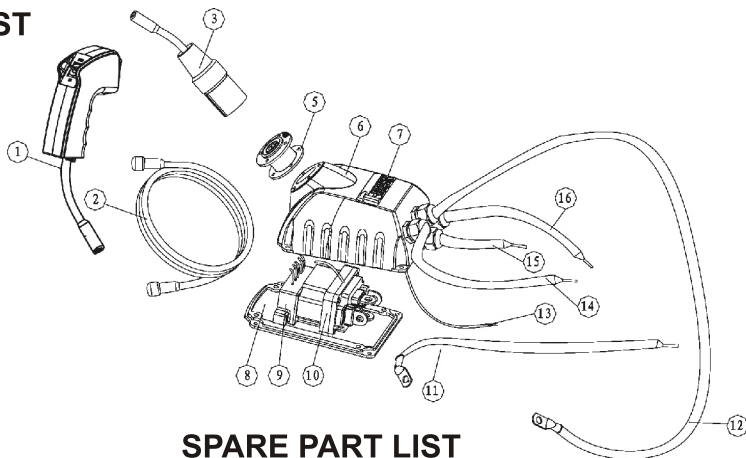
## SPECIFICATIONS

Voltage	12V / 24V
Maximal Current	500A
Effective Overall	40M
Dimensions	260x120x150mm
Weight	3kg(6.615LB)

## ELECTRICAL CIRCUIT DIAGRAM



## PART LIST



## SPARE PART LIST

NO .	P/N	Description	Quantity
1	7329703.6.4	Control	1
2	7329703.6.6	Wire for Control	1
3	7329703.6.5	Control Plug	1
5	7329703.0.24	Cover	1
6	7329703.1-1	ISM Cover	1
7	7329703.1-3	Logo	1
8	7329703.1-2	Plate	1
9	7329703.6.3	Peceiver	1
10	7329703.6.1	Integrated Solenoid Module (ISM) 12V	1
10	7330703.6.1	Integrated Solenoid Module (ISM) 24V	1
11	7329703.6.1-17	Black Long Wire	1
12	7329703.6.1-14	Red Long Wire	1
13	7329703.6.1-4	Black Wire	1
14	7329703.6.1-11	Black Short Wire	1
15	7329703.6.1-12	Red Short Wire	1
16	7329703.6.1-15	Yellow Short Wire	1

## NOTE:

The safety precautions and instructions discussed in this manual can't cover all possible conditions and situations that may occur. It must be understood by the operator that common sense and caution are factors, which cannot be built into this product, but must be applied by the operator.



**Distributed by:**

Radiod Control Pass Word: