



INSTRUCTIONS—INSTRUCCIONES—CONSIGNES

APPLICATION: 1997-2004 FORD F-150/250LD REGULAR CAB / 1999-2004
 SUPERCAB 4-DOOR (04' HERITAGE)
 1997-1998 FORD F-150/250LD SUPERCAB 3-DOOR.
 PART # 23-1430, 23-1435, 23-1100, 23-1105

SIGNATURE OF QUALITY
 AUTOMOTIVE PRODUCTS, INC.

ITEM	QUANTITY	DESCRIPTION	TOOLS NEEDED
1	2	SIDEBARS	3/4" SOCKET
2,3	2	FRONT MOUNTING BRACKET (2) DRIVERS SIDE, (3) PASSENGER SIDE	3/4 "WRENCH
4,5	2	REAR MOUNTING BRACKET (4) DRIVERS SIDE, (5) PASSENGER SIDE	13MM SOCKET
6	4	1/2" X 2" HEX HEAD BOLTS	13MM WRENCH
7	4	1/2" LOCK WASHERS	10MM SOCKET
8	4	1/2" FLAT WASHERS	10MM WRENCH
9	1	M10 NARROW BOLT PLATE (FOR DRIVERS SIDE REAR ON 3-DOOR MODELS ONLY)	TORQUE WRENCH
10	2	M10 OFFSET DOUBLE BOLT PLATES	
11	2	M10 DOUBLE BOLT PLATES	
12	8	M10 FLAT WASHERS	
13	8	M10 LOCK WASHERS	
14	8	M10 HEX NUTS	
15	2	M10 PLASTIC RETAINERS (FOR NARROW BOLT PLATE USE ONLY)	
16	8	M8 X25MM HEX HEAD BOLTS	
17	16	M8 FLAT WASHERS	
18	8	M8 LOCK WASHERS	
19	8	8MM HEX NUTS	

1. REMOVE CONTENTS FROM BOX. VERIFY ALL PARTS ARE PRESENT. READ INSTRUCTIONS CAREFULLY BEFORE STARTING INSTALLATION.
2. From under the driver side front of the vehicle, remove the oval grommet located on the inside of the rocker panel, (Figure 1). Insert (1) Offset Double Bolt Plate, (with threaded studs toward the top), into the factory oval hole, (Figure 2).
3. Locate the driver side front Mounting Bracket. Hold the Double Bolt Plate from one side while you position and attach the Mounting Bracket to the opposite side. Secure the Bolt Plate with one M10 Flat Washer, M10 Lock Washer and M10 Hex Nut. Proceed to install the rest of the hardware to secure the Mounting Bracket to the Double Bolt Plate. (Figure 3). Do not tighten hardware at this time.
4. Align the Mounting Bracket with holes in the pinch weld. Attach the Mounting Bracket to the pinch weld using the included (2) M8 x 25MM Hex Bolts, (4) M8 Flat Washers, (2) M8 Lock Washers and (2) M8 Hex Nuts. NOTE: Insert Bolt with Flat Washer from the outside-in. Do not tighten hardware at this time.
5. Moving to the rear, use one of the Double Bolt Plates and hardware to install the Rear Bracket. Repeat steps 2-4 for driver side rear Mounting Bracket. Note for 1997-98 3-Door models only: The 3-door model uses the included (1) 10mm Narrow Bolt Plate for driver side rear Bolt Plate installation. Thread (1) M10 Plastic Retainer partially onto (1) threaded end on the Bolt Plate, (Figure 5). Insert the other end of the Bolt Plate, (without plastic retainer), into the large round hole and back out the smaller round hole on the inside of the rocker panel. Continue to thread the Plastic Retainer down the Bolt Plate until it is flush with the sheet metal. Thread (1) Plastic Retainer onto the remaining threaded end on the Bolt Plate, (Figure 6). IMPORTANT: The Plastic Retainer is designed to prevent the Bolt Plate from falling into the body cavity and to aid in mounting the Bracket.
6. Depending on model year, slots in rear Mounting Brackets may align with only one factory hole along pinch weld, (Figure 4 & 7). If desired, installer may drill through Pinch Weld for second Pinch Weld bolt, (included). IMPORTANT: Do not drill for second hole until the Sidebar has been completely installed and adjusted to properly locate the Mounting Bracket on the vehicle. Do not tighten hardware at this time.
7. Once the Mounting Brackets have been partially installed, carefully unpack and separate the driver and passenger Sidebar. NOTE: Step pad typically goes toward front of vehicle to match foot well. Position Sidebar onto Mounting Brackets using the included (2) 1/2" x 2" Hex Head Bolts, (2) 1/2" Lock Washers, and (2) 1/2" Flat Washers, (Figure 4 & 7). Do not tighten hardware.
8. Level and adjust the Sidebar, drill for second Pinch Weld Bolt if necessary, then tighten all hardware at this time. Torque all 1/2" hardware to 45-50 ft lbs, M10 hardware to 20-25 ft lbs, and M8 hardware to 10-15 ft lbs
9. Repeat steps 2-8 for passenger side

To protect your investment, wax this product after installing. Regular waxing is recommended to add a protective layer over the finish. Do not use any type of polish or wax that may contain abrasives that could damage the finish.

For stainless steel: Aluminum polish may be used to polish small scratches and scuffs on the finish. Mild soap may be used also to clean the Sidebar.

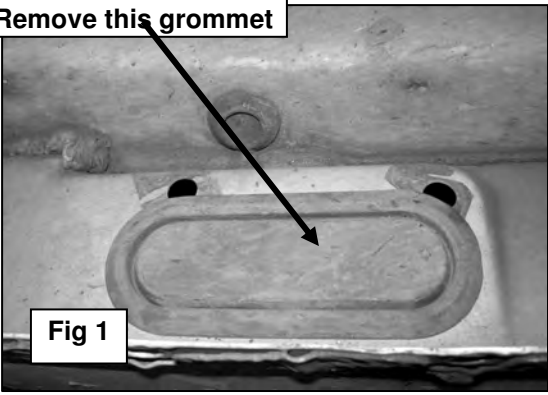
For gloss black finishes: Mild soap may be used to clean the Sidebar.



Westin Automotive Products, Inc.
 5200 N. Irwindale Ave. Ste 220
 Irwindale, Ca 91706

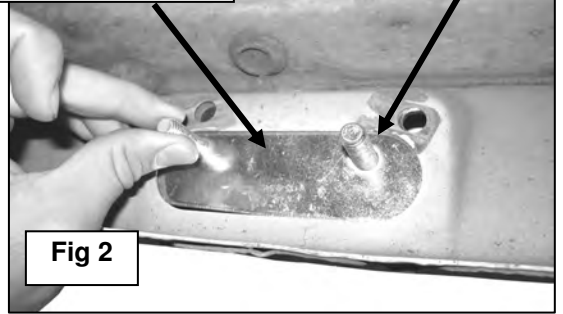
Thank You for choosing Westin products
 For additional installation assistance please call
 Customer Service (800)793-7846

Remove this grommet



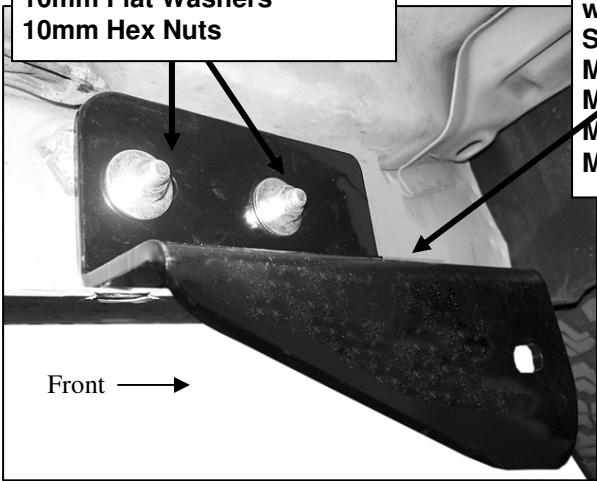
Offset Double Bolt Plate (front)

Bolts to Top



Offset Double Bolt Plate
10mm Lock Washers
10mm Flat Washers
10mm Hex Nuts

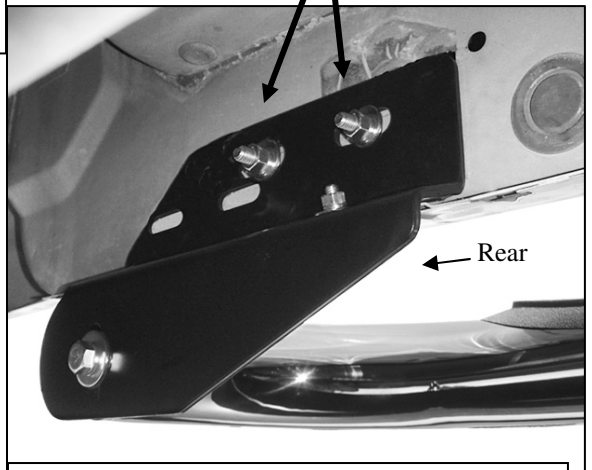
Align holes in brackets
with holes in pinch weld.
Secure with:
M8 x 25mm Hex Bolts
M8 Hex Nuts
M8 Lock Washers
M8 Flat Washers



(Fig 3) Front Mounting Bracket installation

Narrow Double Bolt Plate
(driver side 3-Door model only)
Pictured with Plastic Retainer

Centered Double Bolt Plate
through top slots in Mount-
ing Bracket
M10 Lock Washers
M10 Flat Washers



(Fig 4) Rear Mounting Bracket installation
(except driver side Mounting Bracket on
97-98 3-door models)

**Narrow Double Bolt Plate
(driver side 3-Door model only)
Pictured with Plastic Retainer**

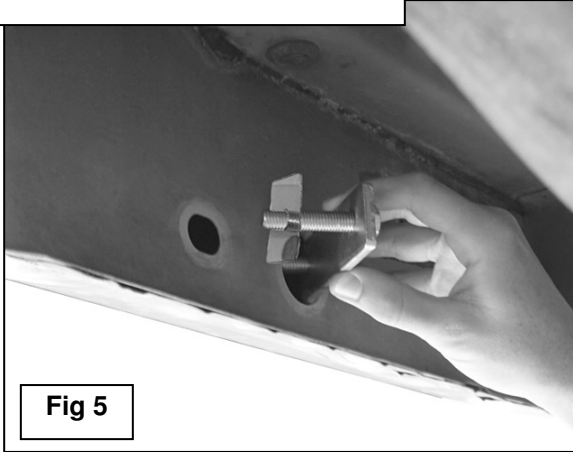


Fig 5

Thread Plastic Retainers until

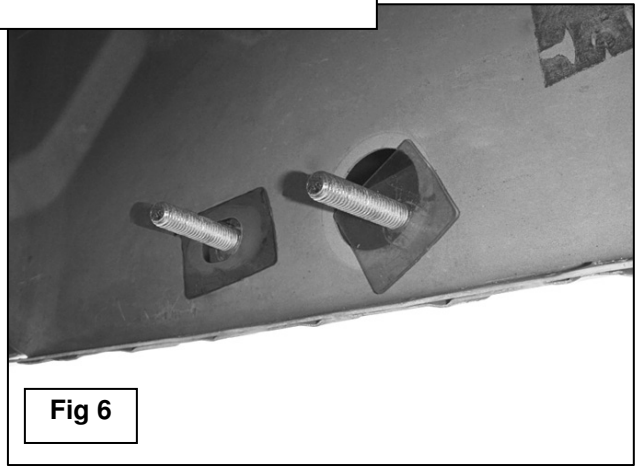


Fig 6

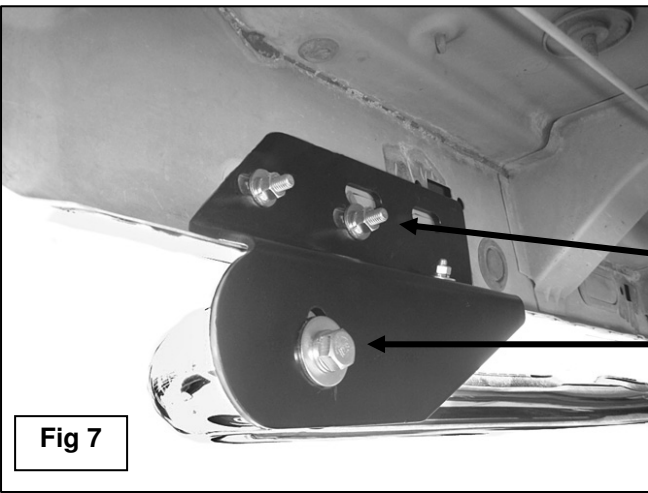
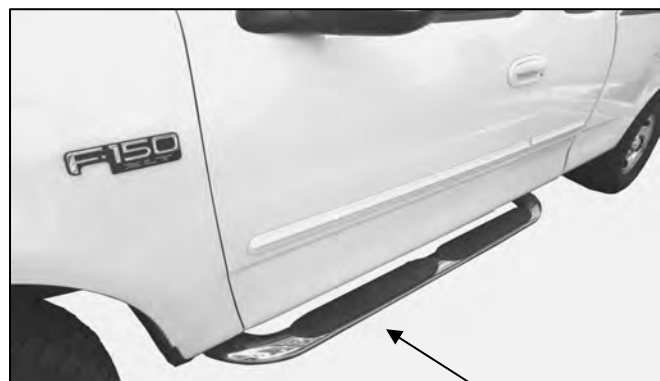


Fig 7

**Narrow Double Bolt Plate uses
(2) lower slots on Mounting
Bracket (driver side 3-Door
model only)
1/2" x 2" Hex Bolt
1/2" Lock Washer
1/2" Flat Washer**



**Driver Side Pictured. Note step pad
location**