



INSTRUCTIONS—INSTRUCCIONES—CONSIGNES

APPLICATION: 2008-2013 NISSAN ROGUE
APP PART # 32-21040, 32-21045
CONTOUR LIGHT BAR

AUTOMOTIVE PRODUCTS, INC.

ITEM	QUANTITY	DESCRIPTION	TOOLS NEEDED
1	1	CONTOUR BAR	TORQUE WRENCH
2	1	MOUNTING BRACKET DRIVER SIDE	12MM SOCKET
3	1	MOUNTING BRACKET PASSENGER SIDE	
4	2	MOUNTING BRACKET SUPPORT STRAP	
5	1	85MM "L" BOLT PLATE DRIVER SIDE	
6	1	115MM "L" BOLT PLATE PASSENGER SIDE	
7	2	M12 HEX HEAD CAP SCREW	19MM SOCKET
8	2	M12 FLAT WASHERS	
9	2	M12 LOCK WASHERS	
10	2	M8 HEX HEAD CAP SCREW	13MM SOCKET
11	2	M8 X 16MM OD FLAT WASHER	
12	4	M8 LOCK WASHERS	
13	2	M8 HEX NUT	13MM SOCKET
14	2	M8 X 24MM OD FLAT WASHER	

ANTI-SEIZE LUBRICANT MUST BE USED ON ALL STAINLESS STEEL FASTENERS TO PREVENT THREAD DAMAGE AND GALLING

- Remove contents from box, verify if all parts listed are present and free from damage. Carefully read and understand all instructions before attempting installation.
- From underneath the front of the vehicle remove the plastic lower splash guard and set aside.
- Starting on the drivers side, remove the factory cap screw from the lower radiator support using the 12mm socket. (fig 1) *Note: these screws will not be re-installed.*
- Install one of the mounting bracket support straps (item 4) in this location using a M8 hex head cap screw (item 10), M8 lock washer (item 12), and smaller diameter M8 flat washer (item 11). (fig 2) Do not fully tighten at this time.
- Install the shorter drivers side "L" bolt plate (item 5) by inserting it through the larger bottom frame hole and feed the threaded stud out the smaller hole. (fig 3)
- Attach drivers side mounting bracket (item 2) to the "L" bolt plate using a M8 hex nut (item 13), M8 lock washer (item 12) and larger diameter M8 flat washer (item 14). (fig 4) Do not fully tighten at this time.
- Follow steps 3-6 for the passenger side.
- Install the contour bar (item 1) to the mounting brackets with the M12 hex head cap screws (item 7), M12 lock washers (item 9), and M12 flat washers (item 8). (fig 5)
- Level and adjust contour bar and tighten all hardware at this time. (fig 6)
- Torque M12 hardware to 50-55ft-lbs and M8 hardware to 15-20ft-lbs.
- Re-attach lower splash guard and trim as necessary to fit around mounting brackets.

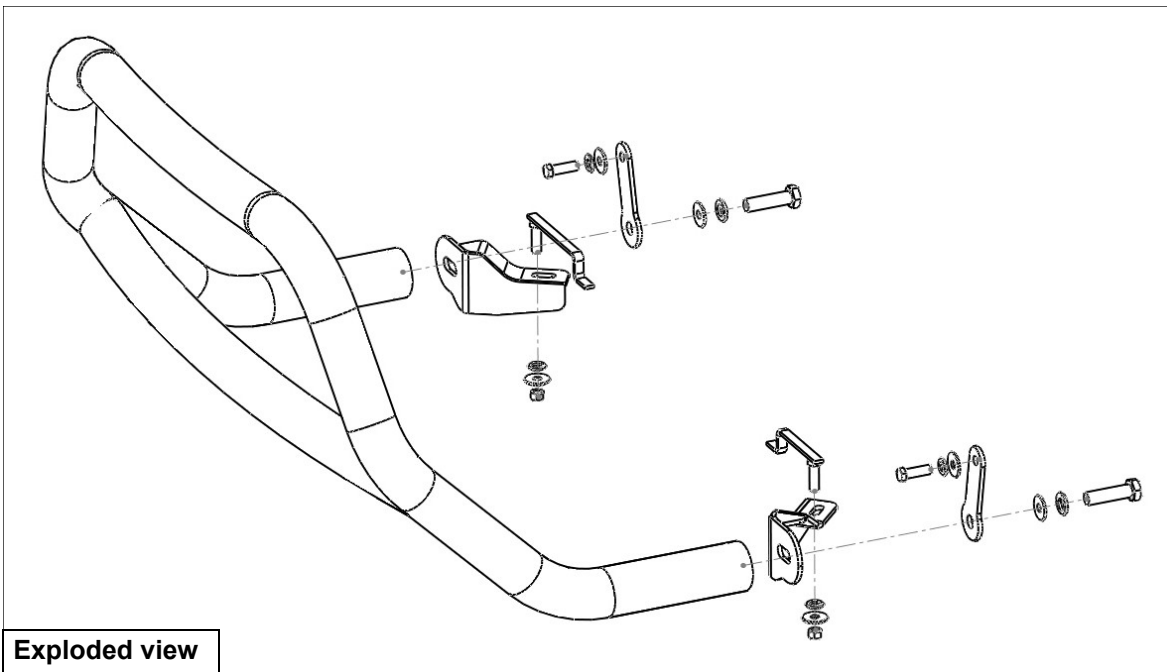
CARE INSTRUCTIONS

- REGULAR WAXING IS RECOMMENDED. DO NOT USE ANY TYPE OF POLISH OR WAX THAT MAY CONTAIN ABRASIVES
- STAINLESS STEEL PRODUCTS CAN BE CLEANED WITH MILD SOAP AND WATER. STAINLESS STEEL POLISH SHOULD BE USED TO POLISH SMALL SCRATCHES.
- GLOSS BLACK FINISHES SHOULD BE CLEANED WITH MILD SOAP AND WATER



Westin Automotive Products, Inc.
320 Covina Blvd
San Dimas, Ca. 91773

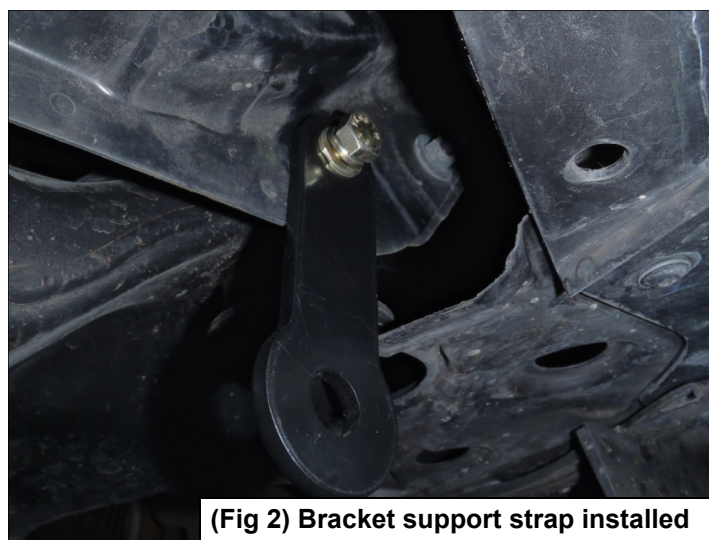
Thank You for choosing Westin products
For Additional installation assistance please call
Customer service (800) 793-7846
www.westinautomotive.com



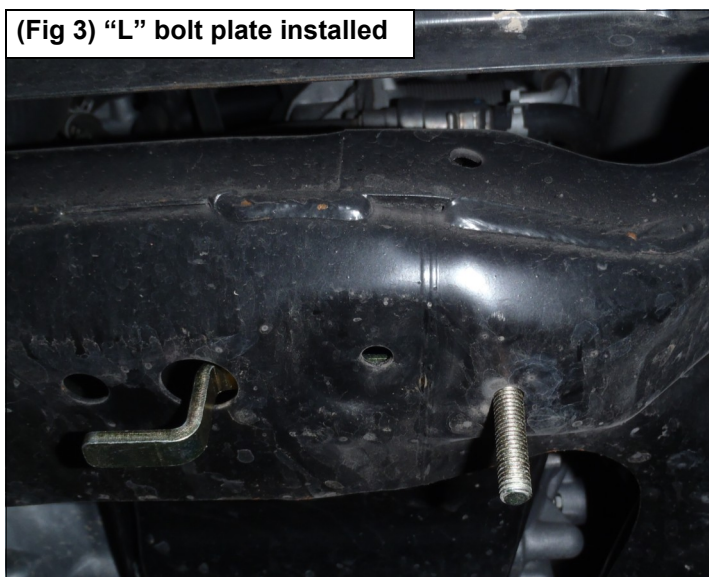
Exploded view



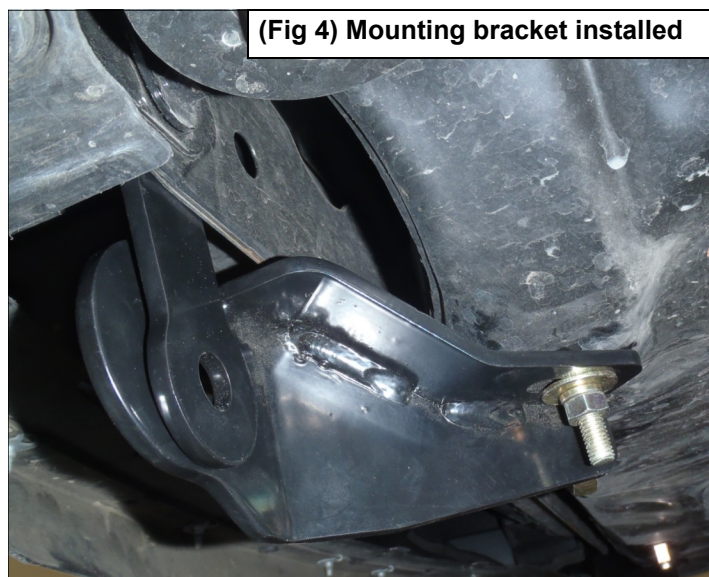
(Fig 1) Remove factory cap screw



(Fig 2) Bracket support strap installed



(Fig 3) "L" bolt plate installed



(Fig 4) Mounting bracket installed

(Fig 5) Contour bar mounted to drivers side bracket



(Fig 6) Contour bar installed



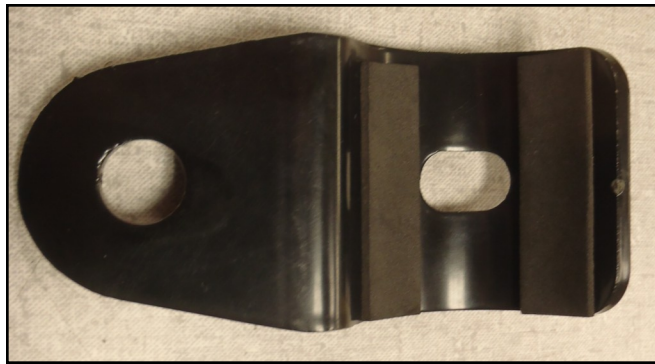
Westin Automotive Products, Inc.
320 Covina Blvd
San Dimas, Ca. 91773

Thank You for choosing Westin products
For Additional installation assistance please call
Customer service (800) 793-7846
www.westinautomotive.com

OPTIONAL LIGHT MOUNT TABS

ITEM	QUANTITY	DESCRIPTION	TOOLS NEEDED
15	2	LIGHT MOUNT BRACKET TABS	HEX KEY TOOL (INCLUDED)
16	2	M10 BUTTON HEAD CAP SCREW	
17	2	M10 TOOTHED LOCK WASHER	
18	2	M10 FLAT WASHER	
19	1	ADHESIVE FOAM TAPE	

1. Remove contents from box, verify if all parts listed are present and free from damage. Carefully read and understand all instructions before attempting installation.
2. Apply foam tape (item 19) to front and back of the tab facing where it mounts to the tube. (fig 7)
3. Using the supplied hex key tool, button head cap screws (item 16), lock washers (item 17), and flat washers (item 18), attach the bracket tabs (item 15) to the threaded inserts in the bottom of the cross tube. (fig 8)



(Fig 7) Foam tape applied to light tab



(Fig 8) Light tab installed on bar



Westin Automotive Products, Inc.
320 Covina Blvd
San Dimas, Ca. 91773

Thank You for choosing Westin products
For Additional installation assistance please call
Customer service (800) 793-7846
www.westinautomotive.com