



**INSTALLATION INSTRUCTIONS**  
**2005-2007 Ford Superduty**  
**Part # 45-1640, 40-1645**

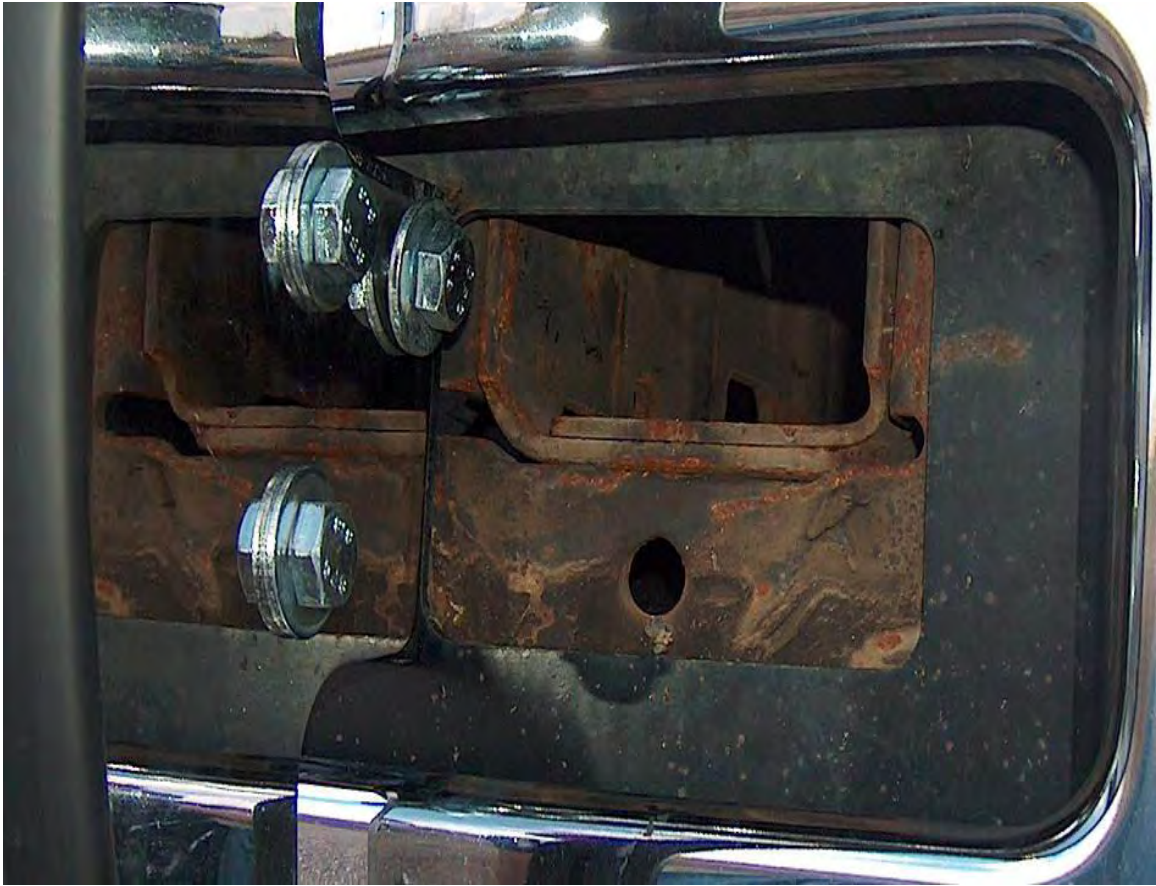
**PART LIST**

1	Grille Guard
1	Mounting Bracket Passenger
1	Mounting Bracket Driver
6	M12*30 Hex Head Bolt, Stainless Steel
12	M12 Flat Washer, Stainless Steel
6	M12 Lock Washer, Stainless Steel
6	M12 Hex Nuts, Stainless Steel

**Note:** Westin Automotive advises the installer to use a thread lubricant on all stainless steel fasteners.

**Procedure:**

1. Remove contents from box and verify all parts are present. Read instructions completely before beginning. Note: Do not attempt this installation alone; Personal injury or damage to the vehicle may result.
2. Remove the factory tow hooks if vehicle is equipped, the tow hooks will not be reinstalled. Remove the factory bumper bolts and nut plates, the factory bumper bolts and nut plates will be reinstalled. **SEE FIGURE 1.** Position the left mounting bracket into place and secure the bracket to the frame as shown in **FIGURE 1** using the factory bolts. Do not fully tighten hardware at this time. Repeat this procedure on the right side.
3. Position the Grille Guard between the mounting brackets and loosely attach with M12 fasteners.
4. After making sure the Grille Guard is level and square to the front end of your vehicle, completely tighten all hardware at this time.



Driver Side Shown here

FIG. 1



Westin Automotive Products, Inc.  
5200 N. Irwindale Ave. Suite 220  
Irwindale, Ca. 91706

Thank You for choosing Westin products  
For additional installation assistance please call  
Customer service (800) 793-7846 or (507) 375-3559

Revision C 12/7/07