

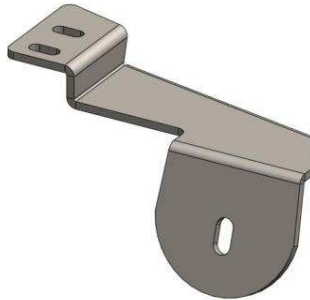
INSTALLATION INSTRUCTIONS

37002 / 37090 (1 - 3 - 4 - 8 - 9) SIDE BAR 07 - 09 TOYOTA TUNDRA REGULAR / DOUBLE CAB

Parts list:	(1) 37182 Hardware kit includes:
QTY	(4) 1/2 x 2" hex head bolt
(1) Side bar set	(4) 1/2" flat washer
(1) Front brackets set	(4) 1/2" lock washer
(1) Rear brackets set	(8) 3/8" Flat washer
	(8) 3/8" Lock washer
	(8) M8 x 25mm Hex head bolt



Driver side front bracket



Driver side rear bracket

Required tools

13 mm Socket/wrench
3/4" Socket/wrench

12 mm Socket/wrench
Ratchet

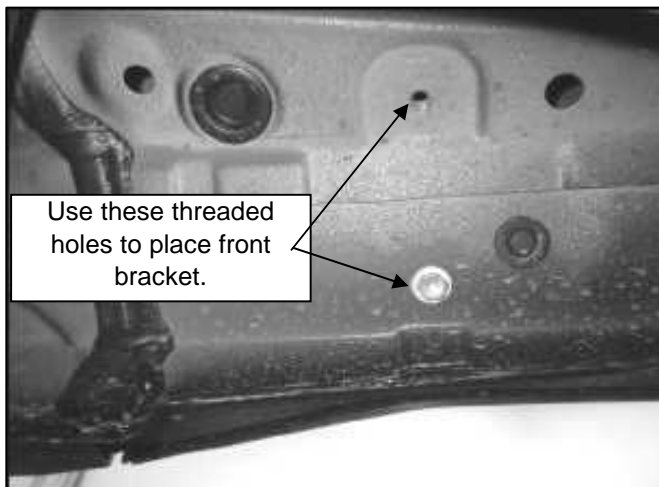
Ratchet Extension

Instructions:

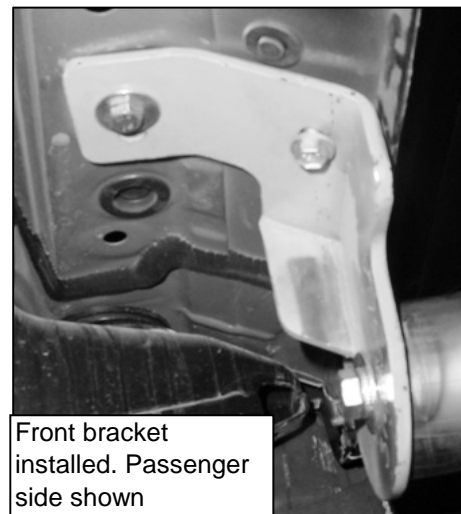
Aprox. Installation time: 35 min.

1. Read carefully and understand instructions before beginning installation. If any part is missed, please stop installation and call to your distributor to get the missing pieces.
2. Locate existing threaded holes inside the rocker panel at front of vehicle. Remove existing bolts if necessary. Picture 1.
3. Place front bracket and secure it using (2) M8 x 25mm hex head bolt, (2) 3/8" flat washer, (2) 3/8" lock washer. Do not tighten yet. Picture 2.

PICTURE 1



PICTURE 2



Clean and care instructions:

Design:

Quality:

Keep your product clean. Do not use abrasive cleaners or polish. We recommend only non-abrasive automotive wax such as pure carnauba.

Checked 04/01/09

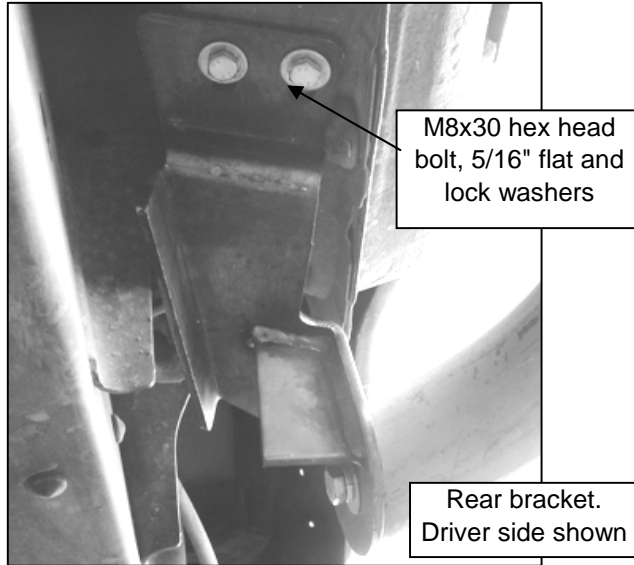
G:\Usuarios\Diseño\Instructivos PDF\37\s\37002.Pdf

INSTALLATION INSTRUCTIONS

37002 / 37090 (1 - 3 - 4 - 8 - 9) SIDE BAR 07 - 09 TOYOTA TUNDRA REGULAR / DOUBLE CAB

4. To install rear bracket, locate threaded holes inside the vehicle's rocker panel, then remove bolts if necessary. Place rear bracket, and secure it using: (2) M8 x 25mm hex head bolts and (2) 3/8" lock washers and (2) 3/8" flat washers. Picture 3. Do not tighten yet.

PICTURE 3



5. Mount side bar on brackets and secure it using: (1) 1/2 x 2" hex head bolt and 1/2" flat and lock washers by each bracket. Leave loose.

6. Adjust and align the side bar, then tighten all bolts.

7. Repeat all steps for the other side of vehicle.

8. Remember to check periodically your product. Maybe it will need a bolt re.tighten.

9. Fill out warranty card and place it on your vehicle's glove box.

Clean and care instructions:

Keep your product clean. Do not use abrasive cleaners or polish. We recommend only non-abrasive automotive wax such as pure carnauba.

Design:

Quality:

Checked 04/01/09

G:\Usuarios\Diseño\Instructivos PDF\37` s\37188oe.pdf