



# BX1656

## 2004-12 Chevrolet Colorado 2004-12 GMC Canyon Installation Instructions

**Please read BOTH these Installation Instructions and the General Instructions before attempting to install or operate this equipment.**

- Blue Ox® towing products and accessories are intended to be installed by Blue Ox® Dealers who are familiar with our products and have the equipment and knowledge to do “fit work”. When necessary Blue Ox® Dealers can be found at [www.blueox.com](http://www.blueox.com) or by contacting our Customer Care Department at (402) 385-3051.
- Many Blue Ox® baseplates are designed to use existing holes and hardware to mount the baseplate to the towed vehicle. Even though bolts are there, do not assume they are adequate for baseplate mounting. Always use hardware supplied in the hardware kit or existing hardware specified in the Baseplate Towing Installation Instructions.

Attachment Tab Height: 19.5”

Attachment Tab Width: 19”

Serial Number

**Bolt Torque Specifications**  
Torque in Foot-Pounds for Metric Bolts

Bolt Size	Grade 8.8	Grade 10.9
6MM	6	8
8MM	16	22
10MM	31	40
12MM	54	70
14MM	89	117

**Confirm the towability and pre-towing procedures for your vehicle with the owner’s manual or contact the vehicle’s manufacturer for specific towing procedures.**

**Bolt Torque Specifications**  
Torque in Foot-Pounds for Inch Bolts

Bolt Size	Grade 5	Grade 8
1/4”	10	14
5/16”	19	29
3/8”	33	47
7/16”	54	78
1/2”	78	119
5/8”	154	230



**If the front of your vehicle looks different than this, call us at (402) 385-3051.**

**! WARNING**

Failure to read and follow these instructions could result in separation of the towed vehicle from the tow bar, causing property damage, loss of towed vehicle, personal injury or death.



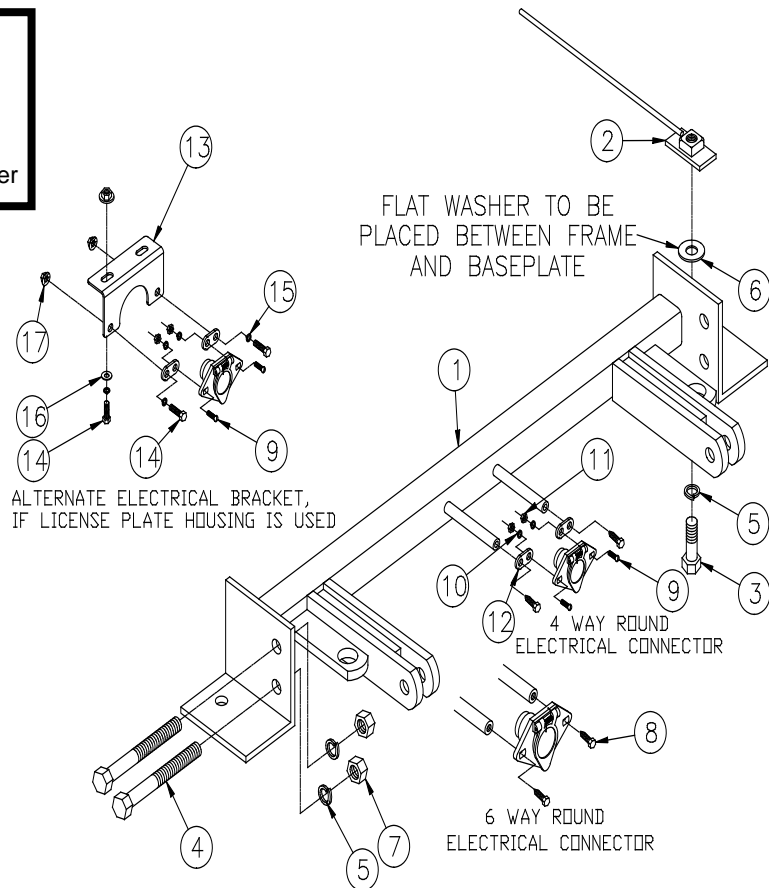
# BX1656

## 2004-12 Chevrolet Colorado 2004-12 GMC Canyon Installation Instructions

Parts List			
Ref. No.	Qty.	Part #	Description
1	1	61-5999	Weldment, Baseplate, BX1656
2	2	61-4604	1/2" Nut Plate with 10" Wire
3	2	201-0068	1/2-13 x 1 3/4" Hex. Bolt, Grd. 5, ZP
4	4	201-0369	1/2-13 x 3 1/2" Hex. Bolt, Grd. 5, ZP
5	6	203-0012	1/2" Lock Washer, ZP
6	2	203-0005	1/2" Flat Washer, ZP
7	4	202-0005	1/2-13 Hex Nut, ZP
8	2	201-0553	1/4-20 x 1/2" Hx. Wshd, Type F Screw
9	2	201-0192	#10-32 x 1/2" Slot, Rd. Hd. Screw
10	2	203-0054	#10 Lock Washer
11	2	202-0047	#10-32 Hex Nut
12	2	101-5822	Adapter, 4 Way Connector
13	1	101-6135	Electrical Bracket
14	4	201-0569	1/4-20 x 3/4" Hex Bolt, Grade 8, ZP
15	4	203-0008	1/4" Lock Washer, ZP
16	2	203-0001	1/4" Flat Washer, ZP
17	4	202-0069	1/4-20 Hex Flange Whiz Lock Nut
	2	226-0046	Baseplate Safety Cable, 36" CL III (Not Shown)
	4	229-0359	Quicklink, 3/8, ZP (Not Shown)

### Tools Required

- |                  |                             |
|------------------|-----------------------------|
| 13MM Socket      | 15MM Socket                 |
| 18MM Socket      | 3/4" Socket                 |
| 17/32" Drill Bit | Utility Knife               |
| Loctite® RED     | Long Shank Flat Screwdriver |



### Important:

Use only genuine factory replacement parts on your baseplate. Do **NOT** substitute homemade or non-typical parts. If a bolt is lost or in need of replacement, for your safety and the preservation of your baseplate, be sure to use a replacement bolt of the same grade (In most cases it will be Grade 5, please reference the parts list above). Replacement parts may be ordered through your nearest Blue Ox® Dealer or Distributor. Failing to follow and/or altering these installation instructions in either installation or required equipment will void the manufacturer's warranty.



# BX1656

## 2004-12 Chevrolet Colorado 2004-12 GMC Canyon Installation Instructions

### Installation Instructions:

**Attachment Tabs:** Due to the design of the removable tabs, the RangeFinder II, Acclaim and Ambassador tow bars can not be used. Adapters, except the BX8833 and BX88151, can not be used with this baseplate.

**Installation Notes:** The front grille portion, belly pan, metal bumper and tow hooks are removed and reinstalled for the baseplate installation. The TOW HOOKS will not be reinstalled. Drilling is required. Trimming of the air dam is required.

The dimensional variations between otherwise identical vehicles can be considerable. While the baseplate was designed for easy installation, it may be necessary to tailor the baseplate slightly to compensate for auto manufacturer's tolerances. These minor adjustments may include filing a hole slightly, bending electrical rods or bending end plates.

The BX8869 Bulb and Socket Wiring Kit is recommended for this vehicle.



1. Push down on the four retainer clips, to release the top edge of the grille, it will release. Pull it forward and set it aside to be reinstalled later.



2. Using the flat screw driver, pry the upper edge of the grille corners forward to release the tow tabs from their metal clips, while pulling the upper portion of the grille forward slightly. So this to both sides of the vehicle.



Possible location for the Bulb and Socket Wiring Kit (BX8869)

**Do not use the towed vehicle for storing luggage, equipment, etc. This may cause you to exceed the towing capacity of the tow bar, baseplate, and its accessories.**

**Handling of some cosmetic parts when installing this product may require the use of protective covers, rags, specialty tools, etc. to prevent damage.**





## BX1656

### 2004-12 Chevrolet Colorado 2004-12 GMC Canyon Installation Instructions



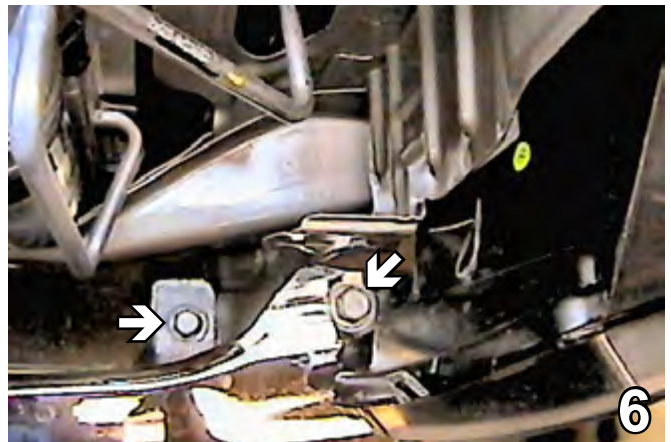
3. Using a long shank flat screwdriver, pry the three lower tabs on the grille from the metal frame, pull grille forward, disconnect the electrical from blinker assembly and carefully set the grille aside to be reinstalled later.



4. Remove all seven metal clips from the metal frame and reinstall them to the tabs on the back side of the grille.



5. Remove the four metric bolts from the belly pan using the 13MM socket, pull the belly pan down to remove. Set the belly pan and the metric bolts aside to be reinstalled later.



6. Using the 15MM socket, remove two metric bolts from the top side of the metal bumper, just inside of the headlight assembly. Do this to both sides of the vehicle. Set the bolts aside to be reinstalled later.



7. Using the 15MM socket, remove two metric bolts from the bumper bracket, pull the bumper forward and unplug the electrical lines. Set the metal bumper and the metric bolts aside to be reinstalled later.

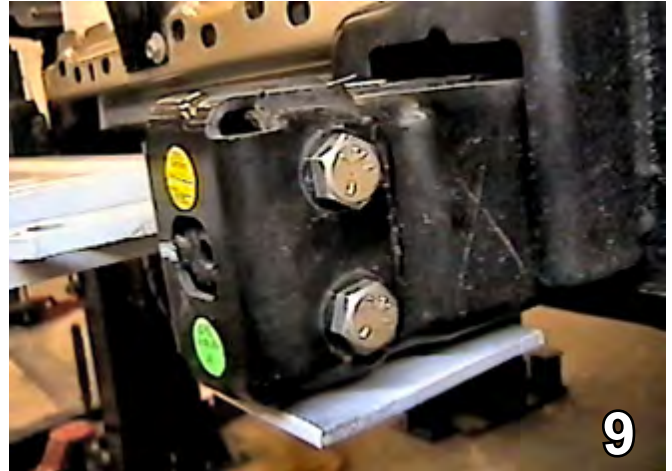


## BX1656

### 2004-12 Chevrolet Colorado 2004-12 GMC Canyon Installation Instructions



8. Remove two metric bolts from the tow hook using the 18MM socket. Do this to both sides of the vehicle. **The tow hooks will NOT be reinstalled.**



9. Hold the baseplate to align with the existing tow hook holes. Insert long 1/2" hex bolts to temporarily tighten the hex nut. Be sure that baseplate is level with the vehicle.



10. Using the baseplate template, drill the lower hole into the frame with the 17/32" drill bit. Do this to both sides of the vehicle. Loosen bolts installed in Step 9, slide the 1/2" flat washer between the frame and the baseplate to align with the drilled hole.



11. Insert the nut plate into the opening just behind the drilled hole on the outside of the frame to align with the drilled hole, tighten the 1/2" hex bolt and lock washer.

When using power drills be aware of the dangers of torque and drill bit length.

**BE SURE TO USE LOCTITE® RED ON ALL BOLTS BEFORE TIGHTENING. TIGHTEN ALL BOLTS ACCORDING TO THE TORQUE CHART ON THE FRONT PAGE OF THESE INSTRUCTIONS OR ON PAGE 3 OF THE BASEPLATE GENERAL TOWING INSTRUCTIONS.**





## BX1656

### 2004-12 Chevrolet Colorado 2004-12 GMC Canyon Installation Instructions



12. Remove the hex nuts from the four long 1/2" bolts, install the lock washers. Apply LOCTITE Red and tighten according to the torque specifications on the front page.



13. Reinstall ALL metric bolts into the metal bumper and plug in all connections. **TIGHTEN ALL BOLTS ACCORDING TO THE TORQUE CHART ON PAGE 3 OF THE GENERAL INSTRUCTIONS SHEET.**



14. Using the utility knife, cut and remove the front portion of the belly pan as shown in the photo above. Do this to both sides of the vehicle. Reinstall the belly pan.

Be sure that **ALL** electrical connections are plugged in properly and functioning **BEFORE** installing the fascia.

**DEALER or INSTALLER:**  
Be certain the user receives the instructions sheets for their products.

Install the tow bar and safety cables according to the instructions included in their packages.

Do not substitute other devices if the tow bar pin and clip are lost.



## **BX1656**

### **2004-12 Chevrolet Colorado 2004-12 GMC Canyon Installation Instructions**

#### **CUSTOMER SERVICE COMMITMENT**

Blue Ox is committed to providing you with exceptional customer care throughout your lifetime with our products. Our team is here to assist you with any questions you may have regarding the performance of your product. Simply call 1-402-385-3051 and you can speak with our customer care team.

Additionally, please visit our website to see which rallies our Destination America team will be attending. For a nominal fee, our service technician will service your towing system to ensure it's in proper working condition. Also, as a commitment to our customers, should you visit our factory, you can stay at our full service Blue Ox campground at no charge along with enjoying a factory tour.

Again, thank you for being our customer and for the confidence you have shown in the performance of our products. It is because of customers like you we enjoy the success we have today.



**2011 Chevrolet Colorado  
Baseplate Installed**

**If the baseplate is in an accident, it must be replaced. DO NOT use it again! An accident can cause unseen damage and using it again could result in more damage or serious injury. DO NOT use the baseplate if it is damaged or missing parts.**



© 2011 Blue Ox  
One Mill Road, Industrial Park  
Pender, Nebraska 68047  
Phone: (402) 385-3051  
Fax: (402) 385-3360  
[www.blueox.com](http://www.blueox.com)