



BLUE OX®

ALLURE™

Installation Instructions



OPERATOR, PARTS, AND INSTALLATION MANUAL

BX7460P

ALLURE™ Tow Bar

Class IV (10,000 lb) Pintle Coupler



WARNING: Insure that your towing vehicle is of adequate size to properly control your towed vehicle. The weight and braking capacity should be large enough to handle both vehicles in an emergency situation.

Check your towing vehicle manufacturers recommendations for towing, hitch load, and braking capacities. The hitch, ball, motorhome chassis, and safety cables (each individual cable) need to be rated at a minimum for the weight of the vehicle being towed.

SAFETY

DO NOT INSTALL, OPERATE OR USE THIS EQUIPMENT UNTIL THE FOLLOWING OPERATING AND SAFETY INSTRUCTIONS HAVE BEEN READ AND UNDERSTOOD.

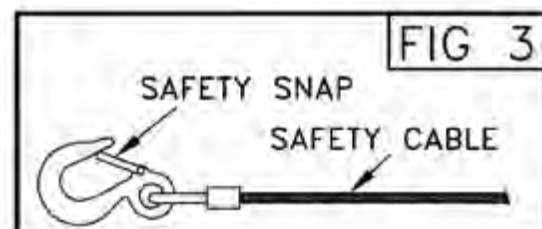
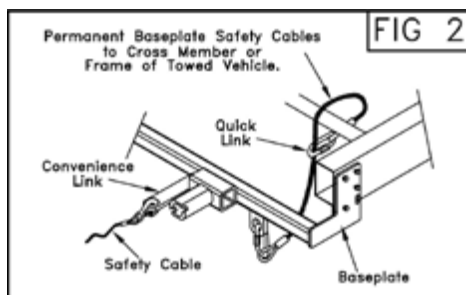
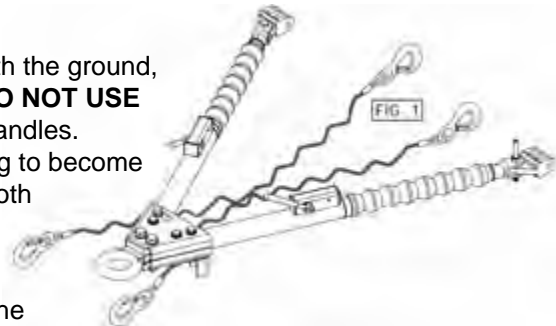


This symbol is used to bring attention to safety precautions and instructions. When you see this symbol, be alert and pay attention to all instructions. **YOUR PERSONAL SAFETY IS INVOLVED.**

1. Blue Ox® tow bars should only be used with vehicles that are towable or have been equipped to be towed.
2. Follow towing procedures in the vehicle owners manual.
3. Tow with steering wheel in the unlocked position.
4. Be sure the front end of the towed vehicle is properly aligned. Misaligned vehicles may cause poor tracking or abnormal wear on the tires.
5. **The use of safety cables or chains are required by law in most states of the United States as well as Canadian territories and provinces. Follow state or territory recommendations. Blue Ox® strongly recommends the use of safety cables (BX88196, Class III or BX88197, Class IV) and permanent safety cables (BX88207, Class III or BX88208, Class IV) with all applications of towing. Please refer to their specific installation instructions for more information. (See Fig. 1)**
6. Check clearance between vehicles in all turning situations. Check the height difference in your towing set up and make appropriate adjustments by following the recommendations of the tow bar instruction manual.
7. Rear lighting is required on the towed vehicle. Blue Ox® offers lighting kits to cover all of your lighting needs. Contact your Blue Ox® representative for more information.
8. Prior to usage, inspect all towing equipment for cracked welds, missing or worn parts and loose bolts.
9. Disconnect the towed vehicle from the towing vehicle before backing up. **Do Not Back Up** while vehicles are connected! Damage to both vehicles and the towing system may occur. The towed vehicle may jack knife causing abnormal stress to the tow bar, car chassis, baseplate and/or pintle hitch of the towing vehicle. These abnormal stresses may cause damage that may go undetected.
10. Avoid sharp turns and rough terrain. Check towing set up after any emergency situation and/or periodically on a long trip.
11. **Do not use the towed vehicle for storing luggage, etc. Which could cause you to exceed the towing capacity of the tow bar, baseplate, and its accessories.**

SAFETY CABLE INSTALLATION

1. Utilizing the hooks, attach the cables to a solid part of the chassis on the towed vehicle or the convenience links of the baseplate. Verify the safety snap clicks back against the hook in order to prevent disconnection. (See Fig. 2 & 3)
2. Adjust slack if needed. Cables should not come in contact with the ground, pintle coupler or the locking handles; damage could occur! **DO NOT USE DAMAGED CABLES!** Route cables away from the locking handles. Safety cable contact with a locking handle could cause the leg to become unlatched and collapse, leading to major damage to one or both vehicles and towing equipment. **NOTE: DO NOT WRAP SAFETY CABLES AROUND THE LEGS!**
3. Verify the load capacity of cables or chains used that meets the needs of the towing set up.



INITIAL INSTALLATION

CAUTION: As with any mechanical product, care should be taken during installation, operation, and storage to prevent your fingers from being pinched, cut or otherwise injured.

1. Stop the towing vehicle on a straight, flat, and level surface and engage the parking brake. Drive the towed vehicle behind the towing vehicle in the approximate towing position and engage the parking brake of the towed vehicle.
2. Place the pintle ring on pintle hitch of the towing vehicle, close the pintle hitch locking lever and secure with clip or lock.
3. Partially extend one leg. The legs are held in with an internal "soft" latch. Pulling out on the leg will disengage this latch. Place the triple lug between the attachment tabs on the baseplate, and secure with the 1/2" pin and quick pin. See figure 4. Place the 1/2" pin and quick pin so the quick pin is away from any object that could open it and allow it to disengage. Install remaining leg in a similar manner.

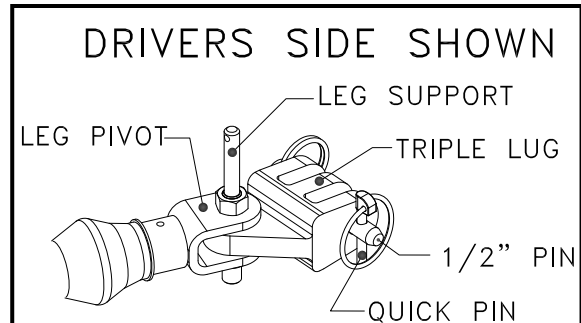


Figure 4

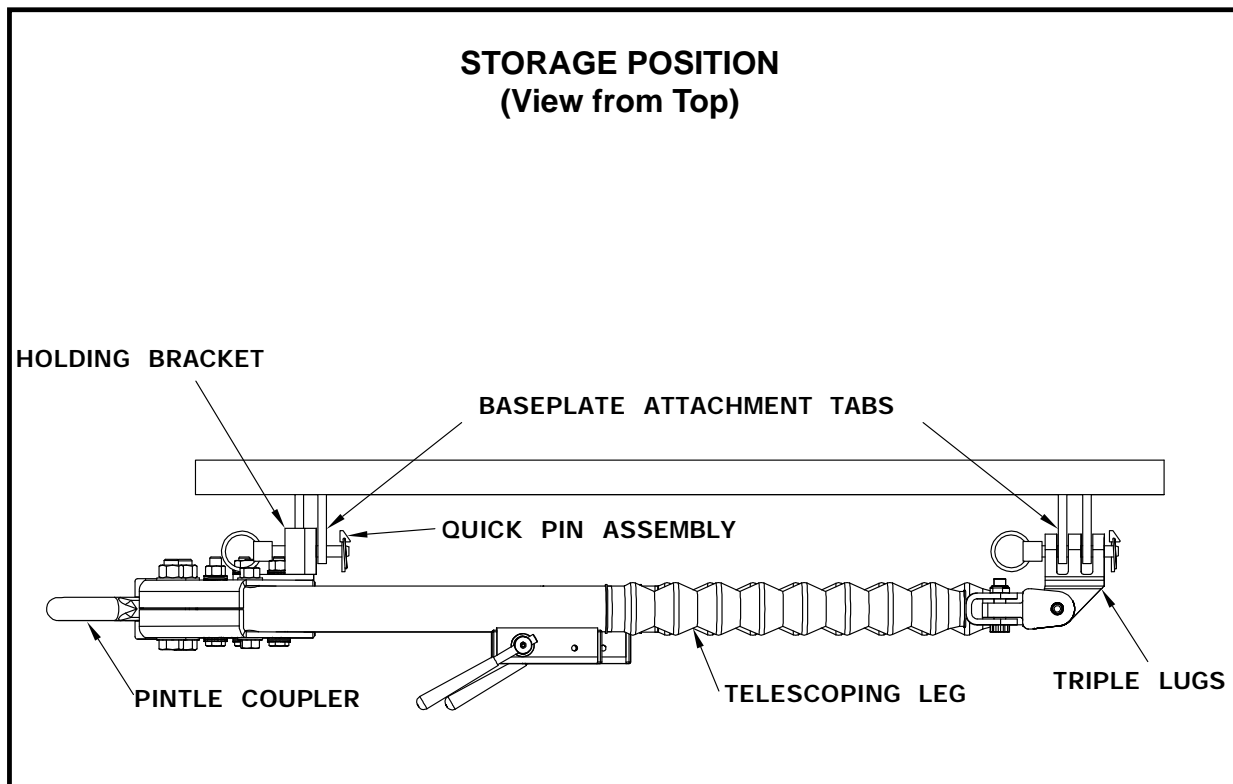


Figure 5

EXTENDING

EXTENDING TOW BAR

CAUTION: It is *possible* to extend the tow bar by driving away with the towing vehicle, however; **THIS IS NOT RECOMMENDED.** Side to side movement of the towed vehicle may occur if the legs do not lock into position. **Towing any vehicle until the operator has confirmed that the leg latches have been properly locked IS NOT RECOMMENDED.**



1. After connecting both legs, start the towed vehicle, disengage parking brake pull backward slowly with the towed vehicle until one or both of the locking handles are engaged and locked. (When locked the handles will "pop" up.) NOTE: If only one locking handle is locked, turn the towed vehicle's steering wheel (with the engine running to make turning easier) towards the unlocked tow bar leg approximately 1/2 to 3/4 turn. Set up the transmission for towing, (see safety section - page 1) stop the engine and leave the steering wheel in the unlocked position. The steering wheel on the towed vehicle must be unlocked at all times while towing. Failure to do so will create hazardous driving conditions. Pull the towing vehicle forward one to two feet until the unlatched leg locks into place. **IMPORTANT:** Check to insure both legs are latched properly before towing.
2. Install safety cables or chains, (see safety cable installation - page 1) lighting system and auxiliary braking system.

UNHOOKING/STORING

1. Stop the towing vehicle with vehicle in tow **in a straight line on a flat and level surface** and set the parking brake. Doing this minimizes the pressure exerted on the tow bar latches, and will aid in releasing the locking handles.

2. Place the towed vehicle in park, for automatic transmissions, or securely in first gear for manual transmissions.
3. Unhook and store the electrical cables, safety cables and any auxiliary braking system.
4. Push straight down on the end of the locking handles to release the tow bar legs. **DO NOT** hammer or force the locking handles to release. If you have difficulty releasing the locking handles try the following:

Turn the towed vehicle's steering wheel (with the engine running to make turning easier) all the way to the right, all the way to the left then bring back to center, this should relieve any pressure being placed on the tow bar handles from the towed vehicle.

5. Remove quick pins and 1/2" pins from the driver side and passenger side of the baseplate, place the legs on the ground.
6. Remove the clip or lock from the pintle hitch locking lever and lift up. Lift the ring off the hitch.
7. With the pintle ring removed from the hitch and the leg handles unlocked, bring the leg over to the drivers side and set the triple lug onto the leg support pin. See figure 6. Pin both legs together using the hair pin clip.
8. Place the free triple lug over the drivers side attachment tab and pin into the tab using the 1/2" pin and quick pin.

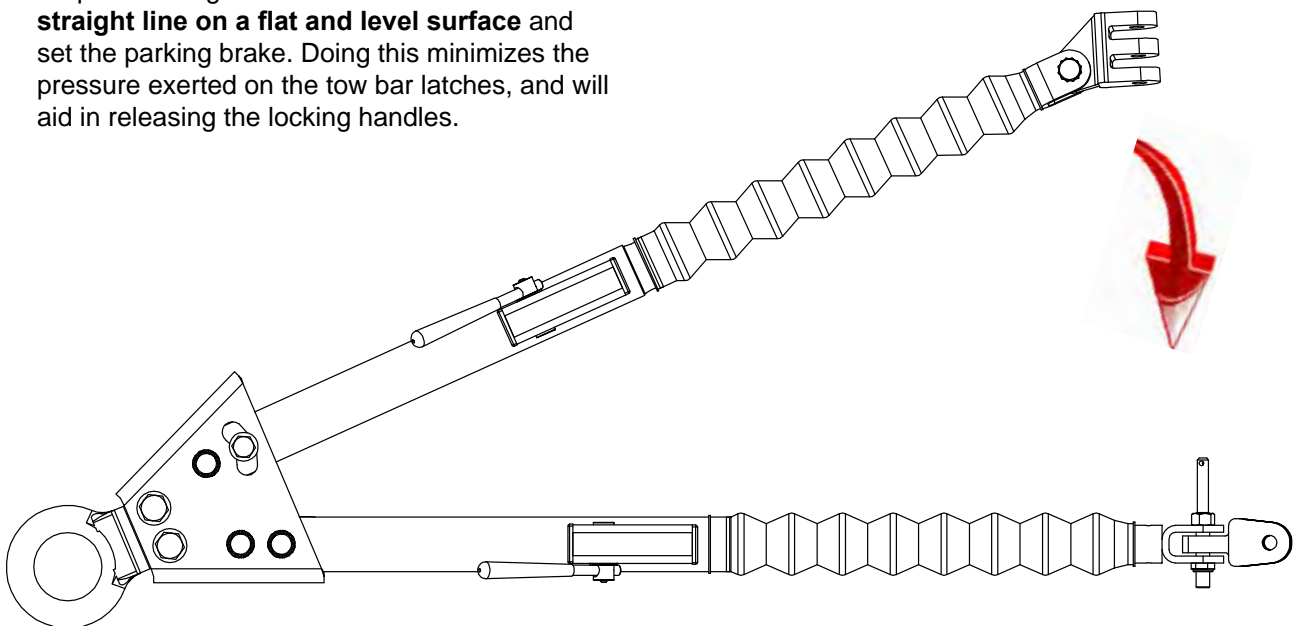


Figure 6

MAINTENANCE/LUBRICATION

9. Attach the pintle ring holding bracket to the passenger side attachment tab of the baseplate using the 1/2" pin and quick pin.

Refer to figures 4, 5 and 6 for Steps 7, 8 and 9.

MAINTENANCE/LUBRICATION

1. *This tow bar requires periodic maintenance. It will be subjected to road dirt and weather during use. The following tips will help maintain the condition of your new tow bar.*
2. *Keep the tow bar covered when not in use, on or off of the towing vehicle. This will cut down on the dust and dirt build up on the inside legs and latches of the tow bar.*
3. *Periodically clean the entire surface of the tow bar with a mild soap and water solution. Wipe dry with a clean cloth.*
4. *Prior to each usage, inspect all towing equipment for cracked welds, missing or worn parts and loose bolts. If any of the above conditions are present, replace all missing, worn or loose parts. Contact Blue Ox® if broken or cracked welds are present, and DO NOT USE!!*

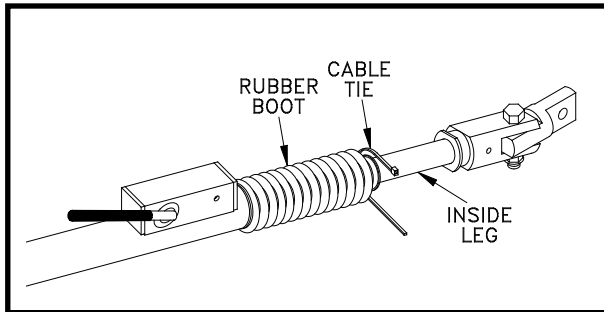


Figure 7

LOCKING MECHANISM TIPS

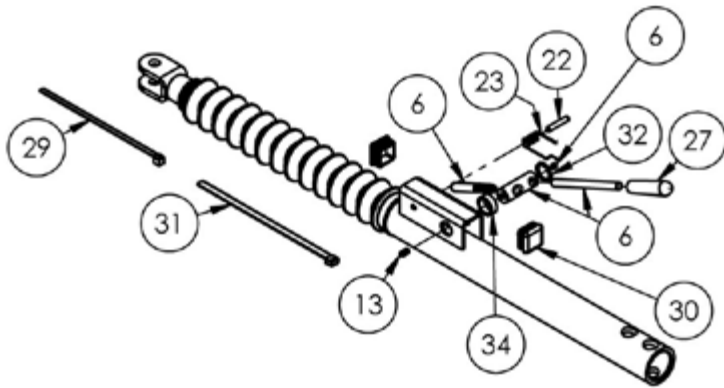
1. Do not back up when towing, the towed vehicle may jack knife causing abnormal stress to the tow bar, car chassis, baseplate and hitch receiver of the towing vehicle.
2. In normal straight line towing conditions, both legs will be in tension. Due to the design of the latch, both handles will feel loose. During turning, braking or parking one or both of the legs may be in compression. This will make the handles feel stiff or tight. In different towing set ups and/or situations, the two locking mechanisms could be in compression or tension or any combination of both. Having one lock in tension and one in compression may cause the operator to think that one leg is locked and one is not. When the legs are fully extended and the springs are holding the latch handles up, the legs are locked and ready to tow whether in tension or compression.
3. Blue Ox® tow bars are designed for the pintle ring to be **parallel to the ground** when towing. **If the pintle tow bar is at an angle, damage or accident can occur.**

LUBRICATION

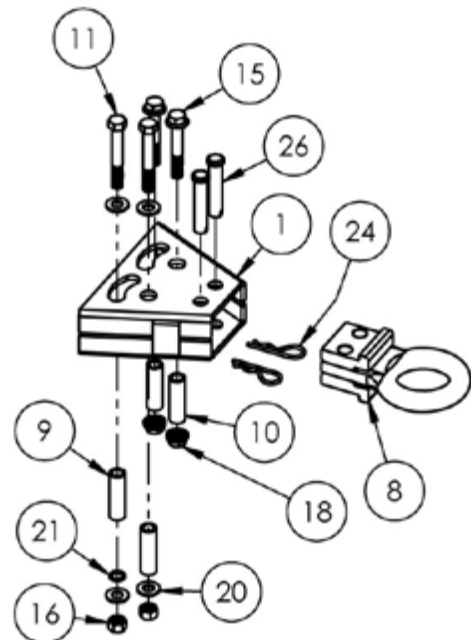
1. Lubrication of the inside leg is recommended one to two times a year, or whenever needed. Both cable ties should be removed for proper cleaning. Wipe the inside leg clean, reattach the rubber boot to the outside leg using a new 9 inch cable tie. Apply a lithium grease to the inside leg to insure smooth operation. Attach the bottom portion of the rubber boot to the leg pivot using the 8 inch cable tie. (Cable ties are available at most automotive or hardware stores). **See Figure 7.**

NOTE: If the tow bar is in an accident, it must be replaced. DO NOT use it again. An accident can cause unseen damage and using it again could result in more damage or serious injury. DO NOT use the tow bar if it is damaged or missing parts.

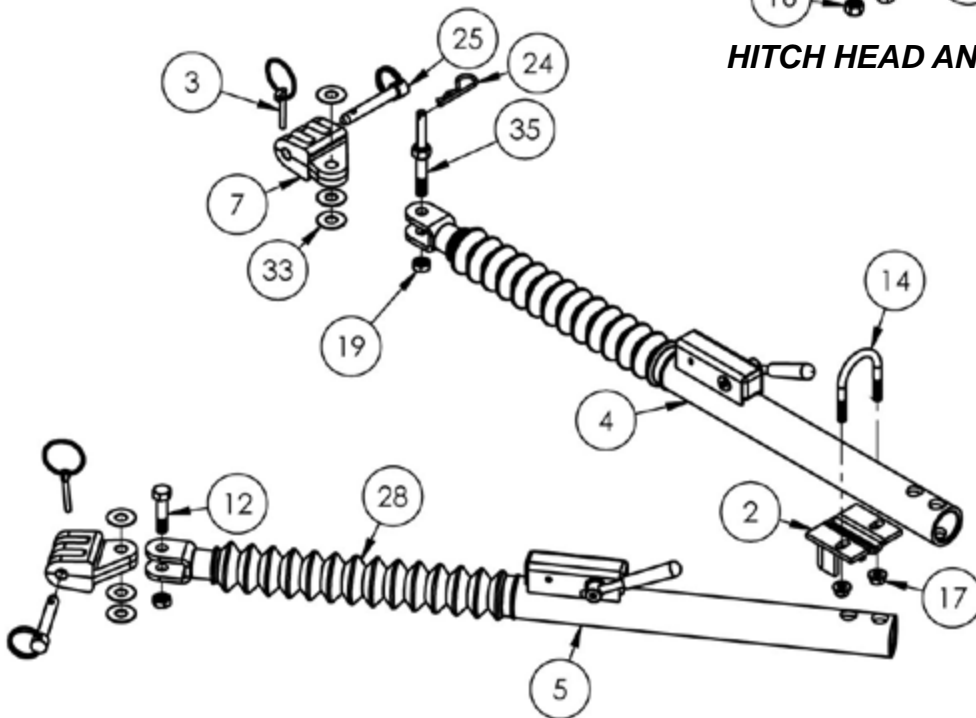
REPLACEMENT PARTS



LATCH HANDLE ASSEMBLY



HITCH HEAD AND PINTLE RING



LEG ASSEMBLY

REPLACEMENT PARTS

Parts List

Ref. No.	Part No.	Description	Qty.
1.....	61-6923.....	Hitch Assembly.....	1
2.....	61-6974.....	Storage Bracket.....	1
3.....	62-3213.....	Quick Pin.....	2
4.....	62-3680.....	Driver Side Assembly Leg.....	1
5.....	62-3681.....	Passenger Side Assembly Leg.....	1
6.....	62-3750.....	Latch Handle Assembly.....	2
7.....	100-1176.....	Triple Lug Casting.....	2
8.....	100-1258.....	Pintle Ring.....	1
9.....	107-3087.....	3/4" OD x .120 Wall x 2-1/2" Tube.....	2
10.....	107-3260.....	3/4" OD x .120 Wall x 2-7/16" Tube.....	2
11.....	201-0369.....	1/2"-13 x 3-1/2" Hex Head Bolt, Grade 5, ZP.....	2
12.....	201-0645.....	1/2"-13 x 2" Hex Head Bolt.....	1
13.....	201-0699.....	1/4"-20 x 1/2" Knurled Set Screw, ZP.....	2
14.....	201-0720.....	3/8"-16 x 2" U-Bolt, Grade 5, ZP.....	1
15.....	201-0888.....	1/2"-13 x 3" Hex Bolt with Flange.....	2
16.....	202-0016.....	1/2"-13 Hex Center Dimple Lock Nut.....	2
17.....	202-0071.....	3/8"-16 Hex Flange Nut, ZP.....	2
18.....	202-0072.....	1/2"-13 Hex Flange Whiz Lock Nut, ZP.....	2
19.....	202-0143.....	1/2"-13 Essna Jam Nut, ZP.....	2
20.....	203-0168.....	1/2" Flat Washer, ZP.....	4
21.....	203-0172.....	3/4" OD Machined Bushing.....	1
22.....	220-0033.....	1/4" x 1-3/8" Spring Pin.....	2
23.....	222-0068.....	Spring Locking Handle.....	1
24.....	229-0088.....	#9 Hairpin Clip.....	3
25.....	229-0520.....	1/2" x 2-5/8" Eff. Pin.....	2
26.....	229-0799.....	5/8" x 2-3/4" Eff. Pin.....	2
27.....	250-0157.....	Foam Grip.....	2
28.....	250-0227.....	Rubber Boot.....	2
29.....	290-0275.....	8" Cable Tie.....	2
30.....	290-0332.....	Black Cap Plug.....	2
31.....	290-0364.....	9" Cable Tie.....	2
32.....	290-0377.....	.765 ID x 1" OD Plastic Washer.....	2
33.....	290-0381.....	.523 ID x 1.363 OD Washer.....	6
34.....	290-0394.....	Nylon Spacer Locking Handle.....	2
35.....	299-0250.....	Leg Support.....	2

QUICK REFERENCE GUIDE

HOOKING/EXTENDING

1. Stop the towing vehicle on a straight, flat, and level surface and engage the parking brake. Drive the towed vehicle behind the towing vehicle in the approximate towing position and engage the parking brake of the towed vehicle.
2. Place the pintle ring on pintle hitch of the towing vehicle, close the pintle hitch locking lever and secure with a clip or lock.
3. Partially extend one leg. Place the triple lug between the attachment tabs on the baseplate, and secure with the 1/2" pin and quick pin. See Figure 4. Repeat for the other leg.
4. After connecting both legs, start the towed vehicle, disengage parking brake pull backward slowly with the towed vehicle until one or both of the locking handles are engaged and locked. Set up the transmission for towing, stop the engine and leave the steering wheel in the unlocked position.
5. Pull the towing vehicle forward one to two feet until the leg locks into place. **IMPORTANT:** Check to insure both legs are latched properly before towing.
6. Install safety cables or chains, (See Safety Cable Installation - Page 1) lighting system and auxiliary braking system.

UNHOOKING/FOLDING

1. Stop the towing vehicle with vehicle in tow in a straight line on a flat and level surface and set the parking brake.
2. Place the towed vehicle in park, or 1st gear for manual transmissions.
3. Unhook and store the electrical cables, safety cables and any auxiliary braking system.
4. Push straight down on the end of the locking handles to release tow bar legs.
5. Remove the quick pins and the 1/2" pins from both sides of the baseplate attachment tab/tow bar connection, and lay on the ground.
6. Remove the clip or lock from the pintle hitch locking lever and lift up. Lift the ring off the hitch.
7. With the pintle ring removed from hitch and the leg handles unlocked, slide the tow bar forward and remove the 1/2" pin from the passengers side leg See Figure 6. Bring the leg over to the drivers side and set the triple lug onto the leg support pin. Pin both legs together using the No. 9 hair pin clip.
8. Place the free triple lug over the drivers side attachment tab and pin together using the 1/2" pin and quick pin.
9. Attach the pintle ring holding bracket to the passenger side attachment tab of the baseplate using the 1/2" pin and quick pin.

TO BE VALID, THE WARRANTY CARD MUST BE COMPLETED IN ITS ENTIRETY BY AN AUTHORIZED DISTRIBUTOR OR DEALER AND SENT TO AUTOMATIC EQUIPMENT MFG. CO., PENDER, NEBRASKA. FAILURE TO DO SO WILL VOID THE WARRANTY. TOWING BEHIND A NON-MOTORIZED VEHICLE WILL VOID THE WARRANTY.



CUSTOMER SERVICE COMMITMENT

Blue Ox® is committed to providing you with exceptional customer care throughout your lifetime with our products. Our team is here to assist you with any questions you may have regarding the performance of your product. Simply call (402) 385-3051 and you can speak with our customer care team.

Additionally, please visit our website to see which rallies our Destination America team will be attending. For a nominal fee, our service technician will service your towing system to ensure it's in proper working condition. Also, as a commitment to our customers, should you visit our factory, you can stay at our full service Blue Ox® campground at no charge along with enjoying a factory tour.

Again, thank you for being our customer and for the confidence you have shown in the performance of our products. It is because of customers like you we enjoy the success we have today.

© 2012 Blue Ox
One Mill Road, Industrial Park
Pender, Nebraska 68047
Phone: (402) 385-3051
Fax: (402) 385-3360
www.blueox.com